

## Additional Mounts Available

Taper Mount Suppressors have many muzzle device options to suit your specific needs. To see all available options see our website.

Stealth Flash Hider



Flash Comp



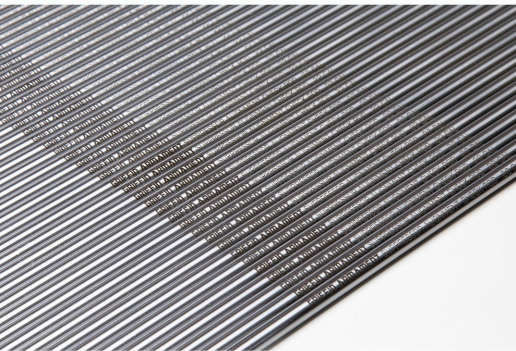
Hammer Comp



Cleaning Brush 3/4" Version



Alignment Check Rods



**PRODUCT LIFETIME LIMITED WARRANTY:**  
Subject to the limitations outlined below, Griffin Armament will repair or replace free of charge any product we manufacture for the duration of this lifetime warranty. This warranty is unlimited in duration and covers at Griffin Armament's sole discretion, service, repair, and/or replacement of damaged products caused by normal use. Any repair not covered by the warranty will be billed at a maximum of 30% of current MSRP for a comparable product, subject to BATFE transfer fees as required.

**LIMITATIONS:** Griffin Armament's warranty does not cover loss, normal wear, damage to our product or the host weapon system resulting in whole or in part from abusive or negligent use, unauthorized modification, improperly threaded barrels, improperly mounted suppressors, improperly loaded or re-loaded ammunition, or neglect. Finish wear is cosmetic and is not covered by this warranty. Any repairs to the unit made necessary by the above mentioned factors may be invoiced to the owner at a maximum of 30% of current MSRP for the most comparable product. The individual barrel lengths and calibers warranted are listed in the manual you receive with your product, or on the product page [applicable only to the most current model of the respective product]. In all cases refer to the product manual for product limitations prior to using a Griffin Armament product. Warranty is subject to change without notice.

To learn more about Griffin Armament and the kit we provide, please visit us on the web at [www.GriffinArmament.com](http://www.GriffinArmament.com) or keep track of us via: Instagram, Facebook, and Youtube.



[www.GriffinArmament.com](http://www.GriffinArmament.com)

# GRIFFIN ARMAMENT

*Bushwhacker*<sup>®</sup>  
*Forty Six*



Multi Caliber

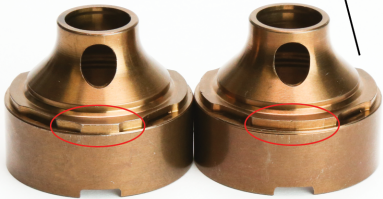
User Maintainable

Universal .46CAL Suppressors

## Configuring the Silencer

Figure 4 :

Note: blast baffle lacks orientation tabs on this surface.



The baffle should be inserted first into the silencer body upon assembly. All cones should point toward the muzzle device.

## Assembly / Disassembly of the Bushwhacker

**Bushwhacker Disassembly:** Interface the included 3 prong CAR Stock Wrench with the front cap, ensuring to cover the spring (see Figure 1). While applying downward force to keep the wrench in contact with the tube body, rotate the wrench counter clockwise. Failing to apply downward pressure with the wrench may cause the spring to eject from the tube and bind in place. Once end cap is removed, push baffles out from the rear to the front of the suppressor using either a wooden dowel if limited use has occurred between cleaning or by using the baffle pusher tool (part# PushToolTaper30 avail separately). Thread the baffle pusher tool into the rear of the suppressor like you would attach the silencer to a mount (See Figure 2) . With the black pusher cap installed on the rod drive the rod by hand through the pusher tool until the tip stops on the first baffle. Use a 3/4" wrench or socket driver to drive the baffle stack out of the suppressor. See "CLEANING AND USE SECTION" below. To remove the taper mount adapter in the rear, use both spanner wrenches simultaneously on the body and the PLAN-A Taper Mount adapter (See figure 3).

**ASSEMBLY:** After cleaning tube and baffles the blast baffle should be inserted first and is the only baffle that does not have keys on the cone side of the cylinder face (See Figure 4). Insert baffles into tube ensuring they are locked together. Screw desired end cap into tube until spring prong is touching tube. Use car keys, finger nail or similar tool to depress spring prong while rotating end cap a few clicks. Interface CAR stock wrench and tighten firmly the rest of the way until cap stops rotating. **NOTE: Ensure that you have the appropriate end cap installed prior to firing (Bushwhacker .46 cap, or Paladin® blast shield cap).** Install desired firearm interfacing accessory in the 1.375x24 threaded rear of the tube.

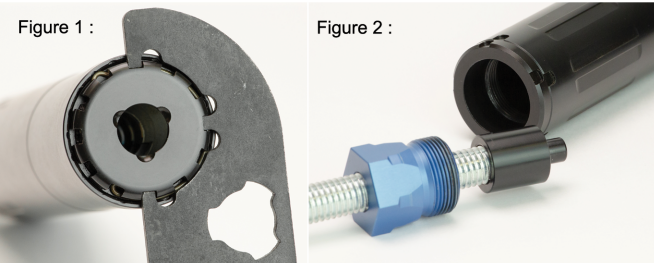


Figure 1 :

Figure 2 :

Figure 3 :

## Cleaning and Use

Clean the mount interface of the silencer and the muzzle device after every use. Failure to clean the mount can result in your suppressor becoming stuck on the muzzle device. An Oatey 1" pipe cleaning brush can be used to clean the inside of Taper Mount interfaces of the suppressor. The inside bore of the silencer tube body can be cleaned using a 1.5" & 1.25" pipe cleaning brush. Various brushes for cleaning are available at [www.griffinarmament.com](http://www.griffinarmament.com). To clean baffles a tumbler, ultrasonic cleaner, or a brush and oil can be used. Use of an anti-crease type product on the thread interfaces will allow for easier disassembly and maintenance. Barrel ratings: 16" 45-70 gov, 450 bushmaster & .458 SOCOM ; 9.5" 5.56mm, 6" 300BLK, 8" 7.62x39, 8" 6.8SPC, 12.5" 7.62x51, 20" 300Win Mag. Pistol calibers no minimums.

## Confirm Alignment

Clear your firearm in accordance with it's manufacturers user manual. Install the taper Mount per instructions. After mounting the muzzle device with a shim set, attach the silencer to the mount. With the Recce silencer firmly tightened onto the mount look down the silencer bore from the end cap illuminating the bore with a light OR using Griffin's alignment check rods. Confirm visual alignment by ensuring the bore of the silencer is in the center of the bore of the firearms barrel. If you do not feel capable of confirming alignment, take your firearm to your Griffin dealer. Keep in mind each firearm you use this silencer on needs to be checked for alignment. Failure to do so or align properly may result in catastrophic failure.

### STILL HAVE QUESTIONS?

Search Youtube for "Bushwhacker 46 Tutorial" video.  
Customer Service M-F 9:30am-5pm 262-200-0003 op# 1



**WARNING: FAILURE TO READ AND UNDERSTAND THIS MANUAL PRIOR TO USE MAY RESULT IN INJURY OR DAMAGE**