

Additional Mounts Available

M4SD series suppressors have more muzzle device options than any other suppressor on the market. Below are a few.

Hammer Comp



M4SD FLASH COMP



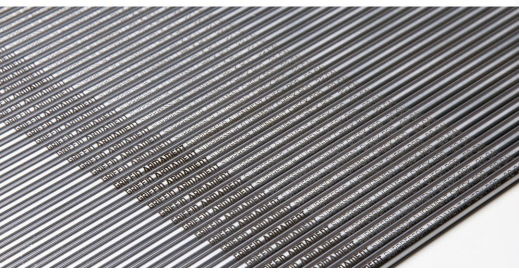
M4SD FLASH HIDER



Cleaning Brush 3/4" Version



Alignment Check Rods



PRODUCT LIFETIME LIMITED WARRANTY:

Subject to the limitations outlined below, Griffin Armament will repair or replace free of charge any product we manufacture for the duration of this lifetime warranty. This warranty is unlimited in duration and covers at Griffin Armament's sole discretion, service, repair, and/or replacement of damaged products caused by normal use. Any repair not covered by the warranty will be billed at a maximum of 30% of current MSRP for a comparable product, subject to BATFE transfer fees as required.

LIMITATIONS: Griffin Armament's warranty does not cover loss, normal wear, damage to our product or the host weapon system resulting in whole or in part from abusive or negligent use, unauthorized modification, improperly threaded barrels, improperly mounted suppressors, improperly loaded or re-loaded ammunition, or neglect. Finish wear is cosmetic and is not covered by this warranty. Any repairs to the unit made necessary by the above mentioned factors may be invoiced to the owner at a maximum of 30% of current MSRP for the most comparable product. The individual barrel lengths and calibers warranted are listed in the manual you receive with your product, or on the product page (applicable only to the most current model of the respective product). In all cases refer to the product manual for product limitations prior to using a Griffin Armament product. Warranty is subject to change without notice.

To learn more about Griffin Armament and the kit we provide, please visit us on the web at www.GriffinArmament.com or keep track of us via: Instagram, Facebook, and Youtube.



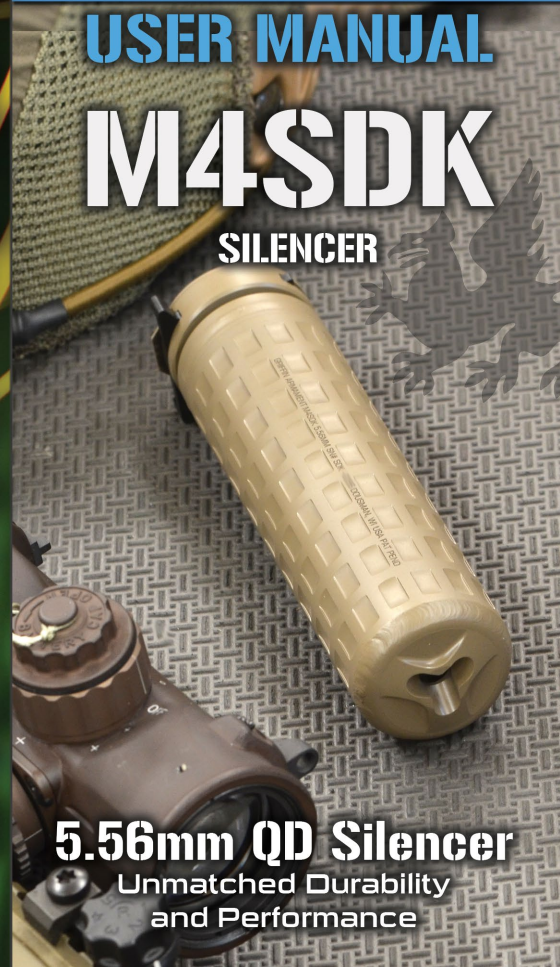
www.GriffinArmament.com

GRIFFIN ARMAMENT[®]

USER MANUAL

M4SDK

SILENCER



5.56mm QD Silencer

Unmatched Durability
and Performance

Mounting The Silencer

1) Clean and degrease threads. Put black over-travel stop tabbed washer over threads. Use provided shims to bring the muzzle device into proper time. Device is installed correctly when 32-35 ft/lbs of torque is applied and logo is centered at the bottom or magazine well side of the firearm. Add or remove shims as necessary to achieve proper alignment. Tabbed washer should be located in line with the logo on the bottom of the muzzle device.



2) Use thumb to deflect spring plate on suppressor, then pull up on the locking gate tabs. This will open the locking mechanism. Ensuring gate is fully open (hold silencer gate side down to allow gravity to keep gate open) pull and twist the silencer onto the mount until the silencer hits the over-travel stop installed in step 1. Gently push silencer forward while applying pressure to the gate. The gate will fall into the rear most groove on the mount. Gate is not locked into position until spring plate is fully flat with the rear of the silencer, fitting over the locking gate spring boss. A twist of the silencer body will confirm lock. If the silencer can twist and pop the gate open, the gate is not fully closed.

3) Once done firing, allow suppressor to cool as suppressors can reach temperatures in excess of 1000deg F under normal use. After the suppressor has cooled to ambient temperature twist silencer body from limit to limit to break loose any carbon binding.

4) Again deflect spring with thumb and pull gate open to full limit. Ensuring the gate is fully open, twist and push/pull the silencer free of the mount.

STILL HAVE QUESTIONS?

Search Youtube for "Griffin Armament SDQD Silencer Install and Maintenance Tutorial" video.

Features of the M4SDK Suppressor



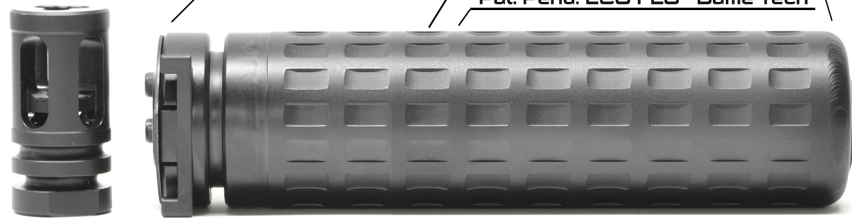
**M4SD (2 Baffle)
Hammer Comp Included**

**Wear Free Fast To Attach
QD Mounting System**

**Low Profile Flash
Suppressor Front Cap**

**Billet Machined Tube
"Chassis" Fully Fluted**

Pat. Pend. ECO-FLO™ Baffle Tech



The M4SDK Silencer combines fast wear free mounting, spec competitive parameters, and uncompromising design and manufacturing to bring a full spectrum premium silencer to market second to none. The M4SDK accommodates more mount compatibility than any other QD silencer in the market. The unique, fully fluted "chassis" is billet machined from 17-4 bar and integrates the front silencer mount support. The blast chamber is homogenous with the outside tube structure and theoretically perfect in terms of strength to mass ratio and heat transfer. The fluted design increases surface area by 40%, increasing rapid heat emission into the environment and creating a silencer more durable than any before it. The front flash hider cap was developed by request of elite units. The associated R&D resulted in an extremely low profile yet high performance flash suppressor to even further reduce flash from the silencer. Our patent pending ECO-FLO™ baffle technology reduces back pressure while simultaneously increasing sound pressure reduction, combining typically independent performance objectives with one solution.

If you are looking for a no holds barred best in class silencer,

Cleaning and Use

Clean the mount interface of the silencer and the muzzle device after every use. Failure to clean the mount can result in your suppressor becoming stuck on the muzzle device. No other maintenance is required with this silencer. An Oatey No. 31328 3/4" pipe cleaning brush can be used to clean the inside mount interface of the suppressor. Cleaning the outside bearing surfaces of the mount can be done with a hand drill and a FINE wire wheel. DO NOT USE coarse or medium wheels as this can cause damage to your mount. **MAXIMUM RECOMMENDED RATE OF FIRE** for a long service life is no more than 2 30 round magazines full auto followed by 14 rounds per minute sustained. Longer barrels promote longer service life. However, your M4SDK silencer is rated down to a 7.5" 5.56m barrel.

Confirm Alignment

Clear your firearm in accordance with it's manufacturers user manual. The SDQD mounting system was designed for use with USGI A2 mounts. Although many industry mounts appear to conform to the A2 dimensions, most are only manufactured similar in appearance to the A2 dimensions. For best fitment use a Griffin suppressor mount. **DO NOT USE CRUSH WASHERS WITH YOUR SILENCER.** doing so may cause damage to your silencer. After mounting the muzzle device with a shim set, attach the silencer to the mount. In the fully locked position look down the silencer bore through the barrel illuminating the bore with a light. Confirm visual alignment by ensuring the bore of the silencer is in the center of the bore of the firearms barrel. Gunsmiths can also provide this service.

WARNING: FAILURE TO READ AND UNDERSTAND THIS MANUAL PRIOR TO USE MAY RESULT IN INJURY OR DAMAGE