

# M14Y .22LR YOUTH BOLT ACTION

## USER'S MANUAL



WARNING: READ THE INSTRUCTIONS AND SAFETY PRECAUTIONS IN THIS MANUAL CAREFULLY BEFORE USING THE FIREARM.



# ROCK ISLAND ARMORY

## USER'S MANUAL M14Y .22LR YOUTH BOLT ACTION

### SAFETY, INSTRUCTION AND PARTS MANUAL



As a responsible owner of this firearm, you must read the instructions and warnings in this manual carefully. Before using this firearm, make sure you understand thoroughly the contents of this manual.

This manual must always be in the firearm's carrying case whenever the owner/user brings it or when it transfers ownership. A copy of this manual is available upon request from:

*ARMSCOR PRECISION INTERNATIONAL  
150 N Smart Way, Pahrump NV 89060  
E-mail: [support@armscor.com](mailto:support@armscor.com)*

# TABLE OF CONTENTS

- 1 Statement of Liability
- 1 State-By-State Warnings
- 2 Safety Precautions

## HEALTH & SAFETY

- 3 Tech Specs
- 4 Basic Parts  
M14Y .22LR YOUTH BOLT ACTION.....4-5
- 6 Exploded Views  
M14Y .22LR YOUTH BOLT ACTION

## ABOUT THE FIREARM

## Operating Instructions 7

- To Load Insert Bolt Into Receiver.....7
- To Load Magazine Box.....7
- To Make Safe.....7
- To Attach Magazine Box.....7
- To Open Action.....7
- To Close Action.....7
- To Fire.....8
- To Remove Magazine Box.....8
- To Load For Single Shot.....8
- For Short Storage.....8
- For Long Storage.....8

## Storage and Transportation 9

## Ordering Parts 10

## Warranty 11

## Notes 12

## MAINTENANCE



## STATEMENT OF LIABILITY

This rifle is classified as a firearm or dangerous weapon. It is expressly understood that we assume no liability for its resale or unsafe handling under local laws and regulations. Armscor assumes no responsibility for physical injury or property damage resulting from either intentional or accidental discharge, or for the function of the firearm subjected to influence beyond their control. Armscor will honor no claims which may result from careless handling, unauthorized adjustments, defective or improper ammunition, corrosion or neglect. Examine your firearm carefully at the time of purchase. It should be forwarded immediately to the factory or its sales agent if any adjustment of any kind of required.

### State-By-State Warnings



#### CALIFORNIA STATE WARNING

*CHILDREN ARE ATTRACTED TO AND CAN OPERATE FIREARMS THAT CAN CAUSE SEVERE INJURIES OR DEATH. PREVENT CHILD ACCESS BY ALWAYS KEEPING FIREARMS LOCKED AWAY AND UNLOADED WHEN NOT IN USE. IF YOU KEEP A LOADED FIREARM WHERE A CHILD OBTAINS AND IMPROPERLY USES IT, YOU MAY BE FINED OR SENT TO PRISON. IT IS UNLAWFUL TO USE A MAGAZINE WITH A CAPACITY OVER 10 ROUNDS.*



#### MASSACHUSETTS STATE WARNING

*IT IS UNLAWFUL TO CARRY ANY MAGAZINE OR BELT WHICH HOLDS MORE THAN TEN ROUNDS, UNLESS AUTHORITY IS GRANTED BY THE BOSTON POLICE COMMISSIONER. IT IS UNLAWFUL TO STORE OR KEEP A FIREARM, RIFLE, SHOTGUN OR MACHINE GUN IN ANY PLACE UNLESS THAT WEAPON IS EQUIPPED WITH A TAMPER RESISTANT SAFETY DEVICE OR IS STORED OR KEPT IN A SECURELY LOCKED CONTAINER.*



#### NEW YORK STATE WARNING

*IT IS UNLAWFUL TO CARRY ANY MAGAZINE OR BELT WHICH HOLDS MORE THAN SEVEN ROUNDS, UNLESS AUTHORITY IS GRANTED BY THE STATE OF NEW YORK. THE USE OF A LOCKING DEVICE OR SAFETY LOCK IS ONLY ONE ASPECT OF RESPONSIBLE FIREARMS STORAGE FOR INCREASED SAFETY, FIREARMS SHOULD BE STORED UNLOADED AND LOCKED IN A LOCATION THAT IS BOTH SEPARATED FROM THEIR AMMUNITION AND INACCESSIBLE TO CHILDREN AND OTHER UNAUTHORIZED PERSONS.*



## 02 | SAFETY PRECAUTIONS

Safety must be the first and constant consideration of every person who handles firearms and ammunition. The person with a firearm in his possession has an important responsibility. He/she must know how to use his/her firearm safely:

1. Always keep the firearm holstered except when drawn for a definite purpose.
2. Always check the firearm for live ammunition when picked up, drawn from the holster, handed to, or received from another person.
3. Never point the firearm at anything you do not intend to shoot.
4. Never cock the hammer of the firearm unless you are ready to immediately shoot it. Do not even insert your finger in the trigger guard until you are ready to shoot.
5. Avoid dry firing even with dummy cartridges, unless the same is performed on a regular target range or at a known inanimate target.
6. When holding the firearm that is ready to fire, be absolutely certain that it is not pointed at any part of your body or at any person within your immediate vicinity.
7. Beware of obstructions in barrel. If, when firing, a weak or peculiar report is heard, cease firing and inspect the barrel for an obstruction. Remove magazine then check to insure there is no obstruction in barrel or chamber.
8. When a misfire or a "dud" is experienced keep the rifle pointed at the target for at least ten seconds before inspecting the firearm. A delayed firing may occur.
9. Remove magazine and ensure chamber and barrel are free of foreign objects.
10. When possible, wear shooting glasses and hearing protectors when firing.
11. Do not shoot at a hard surface, or water for the bullet can glance off and travel in unpredictable directions with considerable velocity.
12. Avoid drinking alcoholic beverages when handling the firearm.

### **WARNING:**

*DO NOT ATTEMPT TO USE ANY FIREARM WITHOUT HAVING A COMPLETE UNDERSTANDING OF ITS PARTICULAR CHARACTERISTICS AND SAFE USE.*

### **WARNING:**

*YOU SHOULD NEVER DEPEND ON A SAFETY MECHANISM OR ANY OTHER MECHANICAL DEVICE TO JUSTIFY CARELESS AND IMPROPER HANDLING.*

### **WARNING:**

*THIS FIREARM WAS MANUFACTURED TO PERFORM PROPERLY WITH THE ORIGINAL PARTS AS DESIGNED. PLEASE MAKE SURE ANY PARTS YOU BUY ARE INSTALLED CORRECTLY AND THAT NEITHER REPLACEMENTS NOR ORIGINALS ARE ALTERED OR CHANGED. PUTTING A FIREARM TOGETHER INCORRECTLY OR WITH MODIFIED PARTS CAN RESULT IN DAMAGED FIREARM, DANGER, AND INJURY OR DEATH. ANY MODIFICATIONS TO FIREARM WILL VOID FACTORY WARRANTY.*

# 03 | TECH SPECS

Model	14Y
Caliber	.22 LR
Action	Bolt Action
Capacity	9 / 10 Rounds
Barrel	Contoured
Barrel Length	465mm / 18.31in
Overall Length	869mm / 34.25in
Overall Width	73mm / 2.88in
Overall Height	177mm / 8in
Front Sight	Hooded Bead Ramp
Rear Sight	Leaf type
Trigger Pull wt.	1.81 - 2.72kgs (4.0 - 6.0lbs)
Drop at Heel	52.4mm / 2.06in
Drop at Comb	31.75mm / 1.25in
Drop at Monte Carlo	51mm / 2in
Weight, Empty	2.27kgs / 5lbs
Finish	Parkerized
Safety	Positive Thumb Operated
Stock	Natural finish Philippine wood junior size stock, Monte Carlo Style with plastic butt pad, No grip cap, No checkering
Rifling, Twist	Right hand, 1 turn in 400mm (16in)
Number of Grooves	6

## CALIBER



Mag Code: 55148



.22LR HVHP

.22LR HVHP BALLISTICS				
CALIBER	BULLET		VELOCITY, fps	ENERGY, ft-lbs
	Weight, grains	Style	Muzzle	Muzzle
.22LR HVHP	36	HOLLOW	1,247	130

# 04 | BASIC PARTS

## M14Y YOUTH .22LR YOUTH BOLT ACTION BASIC PARTS

A. BARREL-RECEIVER ASSEMBLY	
PART NAME	PART NUMBER
Barrel Reciever Cross Pin	1401
Barrel	14Y02
Barrel Take Down Stud	1403
Barrel Take Down Screw	1404
Barrel Take Down Screw Washer	1405
Ejector	1406
Ejector Screw	1407
Front Sight Hood	1408
Front Sight Ramp	1409
Front Sight Screw	1410
Rear Sight Elevator	1411
Rear Sight Leaf	1412
Rear Sight Leaf Blank Insert (Not Shown)	1413
Reciever	1414

B. BOLT ASSEMBLY	
PART NAME	PART NUMBER
Bolt	1415
Cocking Cam	1416
Cocking Cam Handle	1417
Cocking Cam Stud	1418
Cocking Cam Stud Retainer	1419
Cocking Cam Stud Retainer Spring	1420
Extractor Left hand	1421
Extractor Right hand	1422
Extractor Plunger	1423
Extractor Spring	1424
Firing Pin	1425
Firing Pin Spring	1426
Firing Pin Spring Retainer Pin	1427
Firing Pin Spring Follower	1428
Hammer	1429
Firing Pin Cross Pin	1429A

# 05 | BASIC PARTS

## C. TRIGGER HOUSING ASSEMBLY

PART NAME	PART NUMBER
Magazine Catch	1430
Magazine Catch Pivot Pin	1431
Magazine Catch Stop Pin	1432
Safety Latch	1433
Safety Latch Bearing	1433A
Safety Latch Bearing Spring	1433B
Safety Latch Pivot Pin	1434
Safety Latch Button	1435
Sear	1436
Sear Pivot Pin	1437
Sear Spring	1438
Sear Stop Pin	1439
Trigger	1440
Trigger Pivot Pin	1441
Trigger Spring	1442
Trigger Stop Pin	1443
Trigger Housing	1444M
Trigger Housing Screw Hole Insert	1444MA
Trigger Housing Hold Down Screw, Front	1445
Trigger Housing Hold Down Screw, Rear	1446

## D. MAGAZINE BOX ASSEMBLY

PART NAME	PART NUMBER
Magazine Box	2059A
Magazine Spring	2061A
Magazine Spring Follower	2064
Magazine Spring Retainer	2062
Magazine Spring Retainer Cross Pin	2063

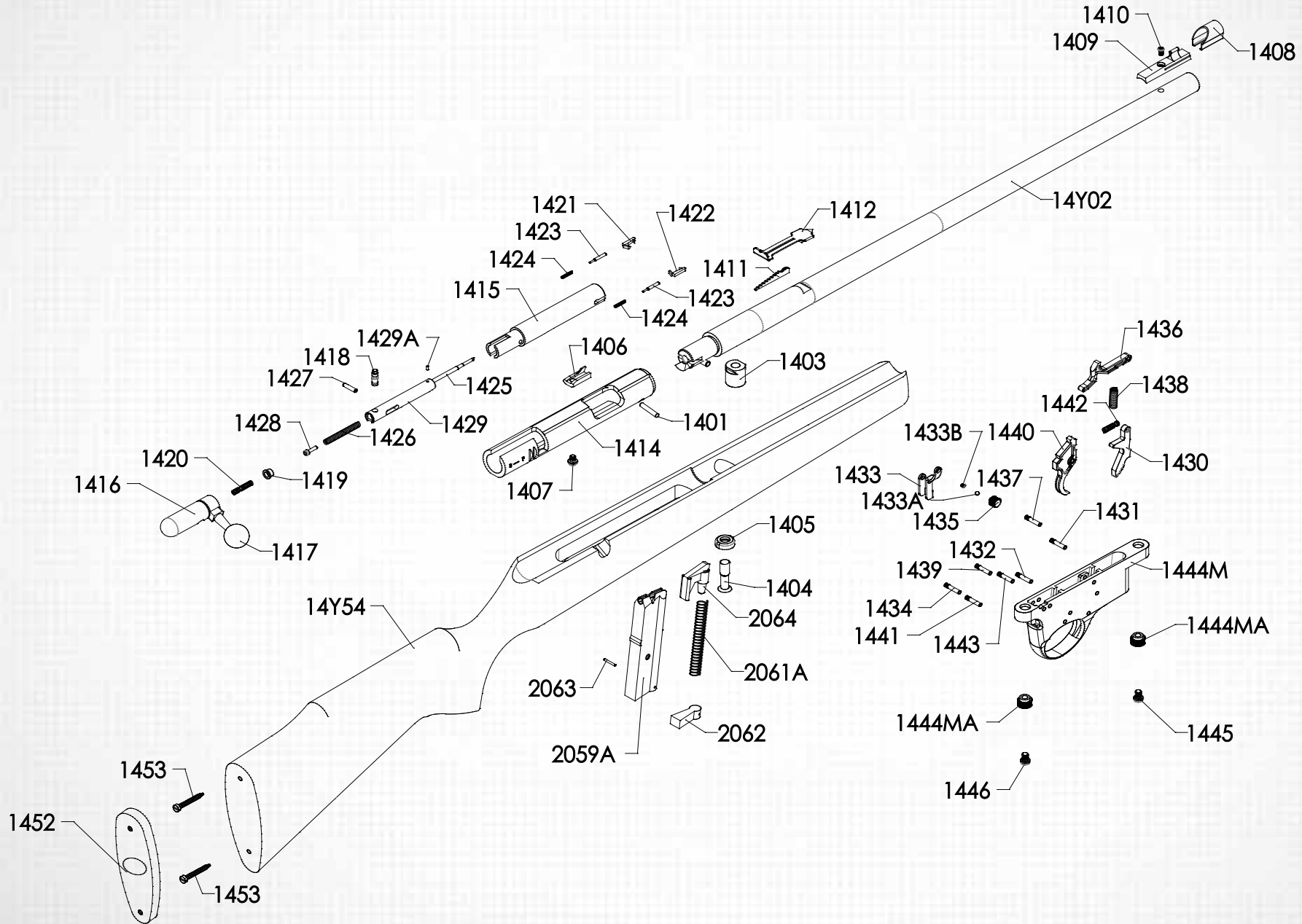
## E. GUNSTOCK ASSEMBLY

PART NAME	PART NUMBER
Butt Pad (Plastic)	1452
Butt Pad Retainer Screw	1453
Gunstock, Ordinary	14Y54



# 06 | EXPLODED VIEWS

## M14Y .22LR BOLT ACTION RIFLE



# 07 | OPERATING INSTRUCTIONS

## OPERATING INSTRUCTIONS

This rifle is packed and shipped from the factory with detached bolt assembly and magazine assembly.

### TO LOAD INSERT BOLT INTO RECEIVER



Cock the bolt assembly by gripping the bolt firmly and rotating the cocking cam counter clockwise. Move safety to "F" position. Depress trigger. Align the lug underneath the bolt assembly with the receiver track. Slide the cocked bolt assembly into the receiver. Push fully forward and turn cocking cam clockwise until lugs are properly seated. Release trigger

### TO MAKE SAFE



Pull safety on right side of the receiver in the direction of the "S" mark. This locks trigger and gun cannot be fired.

### TO OPEN ACTION



Hold bolt handle and rotate cocking cam counter clockwise. As soon as the lugs clear the lug seat, pull bolt handle fully rearward.

### TO LOAD MAGAZINE BOX



Hold magazine firmly in one hand. With the other hand, position cartridge over magazine lip just forward of notch. Insert cartridge head under ears at rear of magazine. Repeat until five cartridges are loaded.

### TO ATTACH MAGAZINE BOX



Position magazine open end up and ears rearward. Insert magazine into the opening forward of the trigger guard. Push magazine inward until it engages with the magazine catch.

### TO CLOSE ACTION



Push bolt handle fully forward and rotate cocking cam clockwise until lugs are properly seated.

# 08 | OPERATING INSTRUCTIONS

## TO FIRE



BE SURE THAT RIFLE IS POINTED AT TARGET! With action closed, move safety to "F" position. Pull trigger. To repeat, open and close action. The discharged shell will be ejected and a new cartridge will be fed into the chamber. Pull trigger. Repeat process as desired until magazine is empty.

## TO LOAD FOR SINGLE SHOT



Open action. Insert cartridge directly into chamber with empty magazine in place.

## FOR LONG STORAGE



After firing, swab bore with clean cloth patch wet with approved cleaning solvent. Wipe dry. Apply a good grade of gun grease or gun oil on the bore and other outside metal surfaces.

Before firing after storage, remove all traces of gun grease or gun oil from barrel bore. CHECK THAT BORE IS FREE OF ANY OBSTRUCTION! Obstruction will block passage of bullet and may cause injury to barrel or person.

## TO REMOVE MAGAZINE BOX



To disengage magazine, pull magazine catch rearward, hold on lock and pull box downward and out.

## FOR SHORT STORAGE



After firing, swab bore with clean cloth patch wet with approved cleaning solvent. Wipe dry. Apply light coat of oil on barrel bore, cocking cam, bolt and other metal surfaces to keep free of rust.



### CAUTION

THE SAFETY IN YOUR FIREARM IS CORRECTLY DESIGNED, FITTED AND TESTED. HOWEVER, ANY MECHANICAL DEVICE CAN FAIL. NEVER POINT AT ANYTHING BUT A SAFE TARGET AND NEVER RELY UPON THE SAFETY TO JUSTIFY CARELESS HANDLING. USE HIGH VELOCITY .22 CALIBER LONG RIFLE CARTRIDGES ONLY. WHEN LOADING, PULL BOLT HANDLE REARWARD AND ALLOW IT TO SNAP FORWARD SHARPLY. BREECH AREA AND MAGAZINE SHOULD BE CLEANED THOROUGHLY.



SCAN QR

SEE FULL VIDEO TUTORIALS ON OUR WEBSITE



### STORAGE AND TRANSPORTATION

When storing the firearm and ammunition, store in separate locations, store ammo in a cool, dry location.

When storing the gun for a prolonged period of time, It is necessary to oil it heavily with an acid-free lubricant. The external parts must be coated with an anti-rust oil or grease to prevent moisture causing the parts to rust and malfunction. Before usage, the rifle must be cleaned and wiped dry again as discussed previously.

#### **WARNING:**

*CHILDREN ARE ATTRACTED TO AND CAN OPERATE FIREARMS THAT CAN CAUSE SEVERE INJURIES OR DEATH. PREVENT CHILD ACCESS BY ALWAYS KEEPING FIREARMS LOCKED AWAY AND UNLOADED WHEN NOT IN USE. IF YOU KEEP A LOADED FIREARM WHERE A CHILD OBTAINS AND IMPROPERLY USES IT, YOU MAY BE FINED OR SENT TO PRISON.*

#### **WARNING:**

*THE FIREARM SHOULD BE RE-STORED IN ROOMS WITH A DRY ATMOSPHERE AND WITH THE LEAST HUMIDITY. IT SHOULD NOT BE STORED ENCASED IN LEATHER OR ANYTHING THAT WILL ATTRACT AND HOLD MOISTURE, CAUSING IT TO RUST.*



## ORDERING PARTS

Visit RIA website to browse, learn more about and purchase parts and ammunition for all of your Rock Island Armory products.

 [www.advancedtactical.com](http://www.advancedtactical.com)



## WARRANTY REGISTRATION

Armcor's warranty covers its firearms and parts. We offer limited lifetime warranty on our products for their intended purpose. As with any product, abuse, gunsmithing by an unqualified person and normal wear and tear are excluded. Additionally, if the firearm was modified and/or repaired by an unqualified gunsmith without permission from Armcor, then the warranty will be void. If warranty work should be required, return the firearm to the address listed below. There is no refund for the shipping cost. Gunsmithing services are available by registered Armcor Gunsmithers. Please email the address below.

To register your firearm, please go to [www.rockislandarmory.com/support-center/warranty/](http://www.rockislandarmory.com/support-center/warranty/) and complete online warranty form. In comments section, write warranty registration and press submit. You can also go to [www.rockislandarmory.com](http://www.rockislandarmory.com) and press warranty section at the bottom.

For more information on warranty, visit [www.rockislandarmory.com](http://www.rockislandarmory.com), or email [support@armcor.com](mailto:support@armcor.com)

Armcor Precision International  
150 North Smart Way  
Pahrump, NV 89060  
Email: [support@armcor.com](mailto:support@armcor.com)

## IMPORTANT WARRANTY INFORMATION

Our Rock Island Armory rifles are warranted to function only with Factory Brass Cased Ammo and the Original Factory Magazine. Use of Handloads is not covered in Warranty of Repair for the function of the Firearm.

DUE TO THE FIT AND TIGHTNESS OF FIREARM, RIA RECOMMENDS A BREAK-IN PERIOD OF 500 ROUNDS.

### THIS IS HOW YOU VOID YOUR WARRANTY

- \* Refinishing your RIA firearm
- \* Misuse, Mishandling, Dropping your RIA Firearm
- \* Firing Remanufactured or Reloaded Ammunition
- \* Not properly reassembling your RIA Firearm resulting in damage, ie reverse plugs!
- \* Any addition of after market parts
- \* Unauthorized repairs done by any other than Rock Island Armory

### LIMITS ON WARRANTY (will not cover)

- \* Finish, Holster wear, Scratches, Chemical damage
- \* After Market Magazines
- \* Damage to Factory Magazines
- \* Sights not installed by Rock Island Armory
- \* Recoil Springs

WE RESERVE THE RIGHT TO CHARGE FOR LABOR, PARTS AND SHIPPING TO RETURN YOUR RIA FIREARM BACK TO FACTORY SPECIFICATIONS IF IT HAS BEEN ALTERED.

## NOTES





[WWW.ROCKISLANDARMORY.COM](http://WWW.ROCKISLANDARMORY.COM)

