

---

# MODEL: MP161 SEMIAUTOMATIC RIFLE



## WARNINGS AND INSTRUCTION MANUAL

MANUAL FOR  
MP161 22LR  
MP161 22WMR

**Important!**

**Read these Warnings and Instructions before using firearm!**

**WARNING!**

DO NOT USE +P Ammo or  
High Velocity High Pressure  
Ammunition  
(factory or handloaded)

© Copyright 2011

---

# **MODEL: MP161 Semi Auto Rifle**

## **US SPORTING GOODS, INC.**

1426 King Street  
Cocoa, FL 32922  
(321) 639-4842

### **READ THIS MANUAL FOR USSG/BAIKAL MP161K BEFORE HANDLING YOUR FIREARM**

The MP161KM is a semi-automatic rifle combining a powerful cartridge, 9 round magazine capacity, excellent design, anatomical grip, scope mount, and special features for accurate shooting.

**CALIBERS:** .22 LR, 22WMR

**FINISHES:** BLUE

**FOR YOUR SAFETY AND THE SAFETY OF OTHERS**, this owner's manual contains important warnings and safety procedures which must be understood **BEFORE** using this firearm. Read the entire manual and if you do not understand any part it or the operation of your pistol, stop and seek professional firearms instructions. You can get a copy of this manual from US SPORTING GOODS, Inc. on request.

Record the serial number of your firearm \_\_\_\_\_

and a description of it:

---

Make a copy of this manual, proof of purchase/sales record for safekeeping in a secure safe or fireproof container. Such proof is necessary if the firearm is damaged, stolen or sent in for warranty repair.

### **Specifications of the BAIKAL MP161K Rifle:**

<b>Caliber</b>	<b>22LR , 22 WMR</b>
<b>Length</b>	<b>39 inches</b>
<b>Weight</b>	<b>102 ounces</b>
<b>Barrel</b>	<b>19.75 inches</b>
<b>Magazine Capacity Full Size</b>	<b>9 plus 1 cartridges</b>

## **WARNING**

**\*\*YOU RISK PERSONAL INJURY OR DEATH  
BY HANDLING THIS FIREARM\*\***

**BEFORE HANDLING THIS FIREARM, READ, UNDERSTAND AND FOLLOW THE INSTRUCTIONS IN THIS MANUAL. ALWAYS KEEP THIS MANUAL WITH THE FIREARM. IF YOU LEND, GIVE OR SELL THIS FIREARM, BE SURE THE MANUAL GOES WITH IT. IF THERE IS ANYTHING YOU DO NOT UNDERSTAND, SEEK ADVICE FROM SOMEONE QUALIFIED IN SAFE HANDLING OF FIREARMS.**

**\*THIS FIREARM IS DESIGNED ONLY FOR TARGET OR COMPETITION AND SHOULD ALWAYS BE TRANSPORTED UNLOADED IN ITS CASE. DO NOT USE THIS FIREARM FOR CARRY, DUTY OR DEFENSIVE PURPOSES.\***

### **TYPE OF AMMUNITION TO BE USED**

It is suggested that high quality commercially manufactured ammunition be used in this firearm. Other types of ammunition may have feeding or extraction problems. Some factory ammunition works better than others and you should stick with that brand you find works well in your semiautomatic rifle. Avoid military surplus or hot loaded ammo. The use of reloaded, +P, high pressure or hand loaded ammunition will void the warranty.

### **NOTICE**

**RIFLES ARE CLASSIFIED AS FIREARMS OR DANGEROUS WEAPONS and are sold by US SPORTING GOODS, Inc. Corporation with the specific understanding that we are not responsible in any manner what-so-ever for their safe handling or resale under local laws and regulations.**

**US SPORTING GOODS, Inc. shall not be responsible in any manner whatsoever for malfunctioning of the firearm, for physical injury or for property damage resulting in whole or in part from (1) intentional or negligent discharge, (2) improper or careless handling, (3) unauthorized modifications, (4) defective, improper, hand-loaded, or reloaded ammunition, (5) corrosion and/or lack of proper maintenance (6) neglect, or (7) other influences beyond our direct and immediate control. This limitation applies regardless of whether liability is asserted on the basis of contract, negligence or strict liability (including any failure to warn). Under no circumstance shall US SPORTING GOODS, Inc. Corporation be liable for incidental or consequential damages, such as loss of use of property, commercial loss and loss of earnings or profits.**

## SAFETY PROCEDURES

1. We recommend that you get competent firearms instruction in safe handling before using this firearm. Please ask your dealer. All guns are extremely dangerous if carelessly handled or used. Remember that the gun user is the primary “safety” and to depend on any mechanical devices is to be only half safe.

EVEN WITH THE MAGAZINE REMOVED, THIS FIREARM WILL STILL FIRE IF A ROUND (LIVE BULLET) IS IN THE CHAMBER AND THE TRIGGER IS PULLED AND THE MANUAL SAFETY IS OFF.

2. NEVER carry this rifle with a cartridge loaded in the chamber. Remember the rifle will still fire without a magazine in the firearm. We recommend that you keep the Safety button in the safe position / engaged and always make sure the chamber is unloaded until you are ready to fire.

3. NEVER point this rifle at anything that is not your intended target, even if this rifle is unloaded. When loading, cleaning, unloading or handling, always be sure the muzzle is pointed in a safe direction and always keep your fingers off the trigger.

4. NEVER assume any gun is unloaded. Before handling this rifle, remove the magazine and retract the bolt assembly to check for any ammo in the firing chamber. See Unloading Instructions and then unload any ammunition. Make sure you know that this or any rifle is fully unloaded before handling or displaying it. When handling any firearm, keep your fingers away from the trigger at all times until you intend to fire the weapon.

5. **WARNING:** The actual firearm does not contain any lead; however, it does fire ammunition containing lead or lead compounds known to the State of California to cause cancer, birth defects and/or reproductive toxicity. Those who discharge a firearm, stand near someone who discharges a firearm or cleans firearms are hereby warned of the hazards and dangers presented by lead and lead compounds and should take protective health measures.

### AMMUNITION WARNING

**Old, Hot-loaded and/or re-loaded ammunition may be dangerous. Because of the poor or nonexistent quality control standards among some companies or people who make reloaded ammunition and the dangers of overloads and underloads (squib loads) which may occur, we recommend that only good quality new factory ammunition be fired in our firearms. [If you prepare your own handloads, do NOT exceed recommended pressures in line with those generated by standard factory loads as manufactured by Remington, Winchester, Federal, PMC or other reputable companies.] Do NOT use +P Ammo or High Velocity High Pressure Ammunition (factory or handloaded). Old ammunition may not fire with sufficient force to expel the projectile from the barrel.**

## -WARNINGS- READING THESE SAFETY RULES WILL SAVE YOUR LIFE OR THE LIFE OF SOMEONE ELSE

Get instructions from a competent firearms instructor before using this or any firearm. Learn from a professional how to handle, load, unload, operate, fire and care for your gun.

NEVER PLAY with your firearm. It is not a toy but a very dangerous weapon that can cause serious personal injury or death.

Always keep the gun pointed in a safe direction. Treat every gun as if it is loaded... all the time. NEVER point any firearm (loaded or unloaded) at any person or anything you do not intend to shoot. Always keep your gun unloaded until ready to use and make sure that it is unloaded before cleaning.

Keep your finger OFF the trigger until you are actually aiming at the target and ready to shoot.

Never rely on a gun's "safety" to protect you from unsafe gun handling. A safety is only a mechanical device, not a substitute for common sense and gun safety procedures.

Never leave a gun unattended or where it could fall and fire.

Store guns and ammunition separately **beyond the reach of children**. Make sure that they are properly secured so untrained individuals and children will be denied access to your guns and ammo.

Test your gun's operation and safeties ONLY at a shooting range while the firearm is pointed in a safe direction.

Know your target and what is beyond. Ask yourself what your bullet will hit if it misses the target or passes through the intended target. Remember, a fired bullet can travel over a mile (including a ricochet) and is capable of going through walls.

Guns and alcohol or drugs do not mix. Don't take any alcoholic beverages and/ or drugs before or during shooting activities.

Never pull a gun toward you by the muzzle. Don't climb a tree, cross a ditch or fence with a loaded gun.

Always empty guns before entering a house, car, truck, boat, RV, camp or any building.

When receiving a gun, always open the action and check to make sure it is unloaded.

NEVER accept anyone's word that a gun is "unloaded" or "empty". You should immediately open the action and check to make sure it is unloaded.

**⚠ -WARNINGS- READING THESE SAFETY RULES WILL SAVE YOUR LIFE OR THE LIFE OF SOMEONE ELSE**

Be careful with ALL ammunition. Even “blank” cartridges are deadly at close range due to the muzzle blast. Make sure your ammunition is in new and in good clean condition. Do NOT oil or grease ammo as this may damage the cartridge primer. Do NOT tamper with or alter the standard factory ammunition.

Keep firearms unloaded when not actually in use. Load the gun only when on the range preparing to fire and unload it before leaving the range.

Never put your hand over the muzzle of a gun.

ALWAYS WEAR protective shooting glasses and hearing protection when using firearms.

Spectators should be at least 10 feet behind and away from the shooter while the shooter is loading, shooting and unloading. Spectators should wear protection for hearing and sight loss and they should avoid distracting those firing their weapons.

Never carry a rifle in your pocket, purse or tucked in a belt or waistband. Use a rifle case or a proper holster with safety flap or strap.

Never drop your gun. If you do drop it, unload it and check it for proper function before using it again.

Don't alter or modify your gun. Don't try to change your gun's trigger pull, because it may affect sear engagement and thereby cause accidental firing.

Do not remove any internal safety or safety device on the firearm. Safety mechanisms are designed to protect you from injury or death.

Do maintain and keep your gun clean. Keep in a dry place away from other metals and water. If your gun shows sign of corrosion or improper operation, have it serviced by a competent gunsmith.

Keep the muzzle pointed in a safe direction when loading and unloading your gun. Never point the muzzle at anyone.

Never shoot at hard flat surfaces or water...bullets ricochet.

If a gun fails to fire when the trigger is pulled, keep it pointed down range at the target for 30 seconds. Sometimes slow primer ignition will cause a “hang fire” and the cartridge will go off after a short pause. If it still fails to fire, keep muzzle pointed in safe direction and avoid exposure to the breech, as you attempt to unload your firearm.

When loading a semi-automatic rifle, make sure that the muzzle is pointed in a safe direction and you are not exposed to the breech and the bolt assembly's

**⚠ -WARNINGS- READING THESE SAFETY RULES WILL SAVE  
YOUR LIFE OR THE LIFE OF SOMEONE ELSE**

ejector port or top opening as you release the bolt to travel forward.

Never let water, snow, mud or other material enter the barrel. Always be sure the barrel is free of any obstruction.

Since many ammunition identifications sound similar, be sure that you use only the correct ammunition for your gun. Do NOT use the wrong size or wrong strength ammunition in your firearm.

Repeated and prolonged exposure to gunfire may result in toxic levels of lead in your body. In addition, there are risks of cancer, impotency and birth defects. When shooting indoors, make sure there is proper ventilation.

Teach children: 1. NOT to touch guns, bullets, cartridges, shells or any explosive device and 2. if they discovery such a dangerous item or weapon, they must immediately report its location to their parents, school teacher and police.

Remember a firearm has the capability of taking your life or the life of someone else. Be careful with your firearm -- an accident is almost always the result of not following basic safety rules.

HOME SAFETY IS PROBABLY YOUR BIGGEST CONCERN. We suggest the following gun lock: Master Gun Lock. It works on most Firearms and is available in gun shops and sporting goods departments. For more information write: Master Gun Locks; Master Lock Company LLC, P.O. Box 927, Oak Creek, WI. 53154. (Www.masterlock.com) After all you have invested this much in your new gun, now invest a little more in your family's safety.

USED FIREARMS - If you got your US SPORTING GOODS, Inc. firearm as a used gun, BEFORE USING IT you should unload it and check all its functions to be sure it works correctly. Firearms are some times altered to work incorrectly, or parts may be removed, lost or replaced with incorrect parts. First, unload it and check it yourself and then take it to a good gunsmith who knows US SPORTING GOODS, Inc. Baikal firearms, and have him examine it.

WRITE US concerning any items or circumstances which you don't understand and which might relate to your safety and the operation of your firearm.

**⚠ WARNING**

ANY BORE OBSTRUCTION, EVEN IF IT IS ONLY PARTLY BLOCKED, MAY CAUSE THE GUN TO BLOW UP IF IT IS FIRED, OR MAY CAUSE DAMAGE TO THE GUN SUCH AS A BULGED BARREL. TO AVOID INJURY OR DEATH TO THE SHOOTER OR BYSTANDERS, CHECK THE BARREL BEFORE SHOOTING OR IF A SHOT DOES NOT SOUND NORMAL.

## EXTERNAL CONTROL PARTS

DO NOT LOAD THIS Rifle UNTIL YOU UNDERSTAND THE SAFETIES AND HOW THIS Rifle OPERATES.

**Manual Safety Button:** Located behind the trigger and is a push button / trigger block safety. This safety blocks the trigger ( pushed from right to left, red ring showing on left side and safety is disengaged.... pushed from left to right red ring is covered and safety is engaged) . To fire, push safety from right hand side to left hand side to expose red ring. KEEP this rifle “on safe” (red ring covered and safety pushed from left hand side to right hand side) except at the actual moment of firing, to help protect against accidental firing and possible injury or death of yourself or others. (See Fig: 1a and 1b)



Figure 1a



Figure 1b



Figure 3

**Cocking Indicator:** located below trigger on outside of trigger guard and in front of the trigger. A black pin showing indicates that the rifle is cocked. (See Fig: 3)

**Scope Mount:** Mounted on top of receiver above bolt area. The top of the receiver is drilled and tapped for the mount. (See Fig: 4)



Figure 4

**Adjustable Check Piece:** Loosen two Phillips screws below check piece with screw head on left hand side of stock. Adjust check piece up or down as required and then tighten screws so as to lock check piece in place. (See Fig: 5 and 5a)



Figure 5a

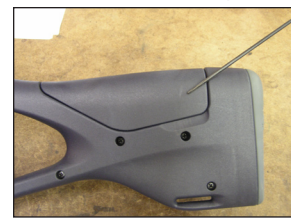


Figure 5b

**Bolt Hold Back:** The bolt is locked in the rearward position when the magazine is empty and in the rifle and the bolt is in the rearward position (See Fig: 6)



Figure 6

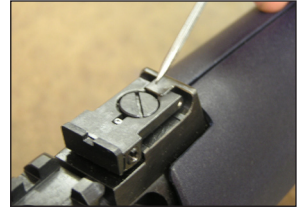


### **Adjustable Rear Sight:**

Located on the top of the rifle in front of the scope mount. The screw on the right hand side of the sight adjust for windage, clock wise turning will move the rear blade to the right side. The screw in the center of the sight on the top adjusts elevation, clockwise turning moves the rear blade up. (See Fig: 7a and 7b)



**Figure 7a**



**Figure 7b**

**Trigger:** Located in trigger guard and moves for and aft to fire rifle (See Fig: 8)



**Figure 8**

**Magazine Catch:** Lever type moves for and aft to release magazine located in front of the trigger guard and the bottom of the receiver. (See Fig: 9)



**Figure 9**

## **LOADING INSTRUCTIONS**

1. Always use original high quality commercially manufactured ammunition in good condition. Hollow point ammo can sometimes cause feeding problems in semi-automatic rifles. If you find one brand that works well, stick with it. Avoid the use of military surplus, reloaded, or hot loaded ammo. US SPORTING GOODS, Inc. assumes no responsibility for incidents which occur through the use of cartridges of non-standard dimension or those developing excessive pressures.



**Figure 10**

2. Before loading be sure the rifle is fully unloaded (See Unloading Instructions) and the MANUAL SAFETY BUTTON IS ENGAGED OR PUSHED FROM LEFT TO RIGHT SO THE RED RING IS COVERED.



**Figure 10a**

3. Depress the magazine catch and remove the magazine.(See Fig: 10)

4. Load the magazine with cartridges by pushing the cartridge down and into the magazine and then sliding the cartridge rearward with your thumb. (See Fig: 10a)

5. Insert the magazine in the receiver until the magazine catch secures it in the receiver with a click. Avoid slamming the magazine into the rifle. Handle the magazine carefully when loading. Any damage by dropping may bend the magazine lips which

can cause mis-feeding.(See Fig: 10b)

6. To load the chamber, first be sure your fingers are out of the trigger guard, the gun is pointed in a safe direction and you are wearing eye & hearing protection. Holding the rifle grip, grasp the bolt handle with your other hand and pull the bolt assembly rearward until it cannot travel any further. Release the bolt and allow it to go forward into the closed position. As the bolt assembly travels forward, it will automatically strip a cartridge from the magazine lips and insert it into the firing chamber.



**Figure 10b**

**⚠ WARNING** Keep Your face away as bolt closes and never force the bolt assembly closed.

**⚠ WARNING** Your rifle is now loaded and ready to fire. IMMEDIATELY MAKE SURE THE SAFETY BUTTON IS ENGAUGED OR IN THE SAFE POSITION. At this point the safety is on and the gun is cocked, the cocking indicator is exposed at this point. (See Fig: 11a and 11b)



**Figure 11a**

7. IF YOU DO NOT WISH TO FIRE THE RIFLE AFTER LOADING, UNLOAD IT IMMEDIATELY. See Unloading Instructions. NEVER CARRY, HANDLE, OR CLEAN THIS RIFLE WITH A LOADED CARTRIDGE IN THE CHAMBER. EVEN WITH THE MAGAZINE REMOVED, THIS FIREARM WILL STILL FIRE, IF A ROUND IS IN THE CHAMBER AND THE TRIGGER IS PULLED AND THE SAFETY IS DISENGAGED.



**Figure 11b**

## **⚠ WARNING**

Always keep the muzzle pointed in a safe direction! Never attempt to load or unload any firearm inside a vehicle, building or other confined space (except a properly constructed shooting range). Enclosed areas frequently offer no completely safe direction in which to point the firearm. If an accidental discharge occurs, there is great risk of injury or property damage. Before loading, always clean all, grease and oil from the bore and chamber, and check to be certain that no obstruction is in the barrel. Any foreign matter in the barrel could result in a bulged or burst barrel or other damage to the firearm and could cause serious injury to the shooter or to others.

## **UNLOADING INSTRUCTIONS**

- 1.ALWAYS keep your firearm pointed in a SAFE DIRECTION.
- 2.BE SURE THE SAFETY BUTTON IS ON SAFE or engaged.
- 3.Press the magazine release button and remove the magazine from the rifle.

**⚠ WARNING**  
removal of the magazine does NOT prevent this rifle from firing. If a bullet or round is in the firing chamber, that round can still be fired. (See Fig: 12)



Figure 12



Figure 12a

4. Unload the firing chamber by keeping the rifle pointed in a safe direction, keep your finger(s) outside of the trigger guard and off the trigger. (See Fig: 12a)



Figure 12b



Figure 12c

5. Pull the bolt assembly (gripping the bolt handle) to the rear so that the extractor can pull out the cartridge in the chamber. Visually check to be sure that the chamber is completely empty and the cartridge has completely exited the firearm. The barrel may be checked by passing a cleaning rod through it. (See Fig: 12b and 12c)

**⚠ WARNING**

When you remove the magazine always double check the chamber to insure you have completely unloaded this firearm. Since the trigger will operate without a magazine inserted, make sure that the safety is ON SAFE or pushed from the left hand side to the right hand side.

1. Before firing, check to be sure you have a safe target and backstop. Never shoot at hard flat surfaces, rocks, water or anything that might make the bullet ricochet. Think about what you will hit if you miss the target. Put on your eye and hearing protection.

2. Load the magazine and chamber as discussed in the Loading Instructions. Keep the gun pointed toward the target.

3. Push the Safety Button from right to left to expose the red ring or disengaged, only disengaged the safety when you are ready to fire. (See Fig: 13)

4. Grasp the rifle by the grip and keep it forward away from the body. Never place your hand in front of the barrel at any time. Take aim by placing the front sight post exactly between the two rear sight posts and they are horizontally in line. Carefully align



Figure 13

the front sight and rear sight so that the top surfaces mate at the lower or 6 o'clock position of the black portion of the target. Squeeze the trigger and the gun will fire.



Figure 13a



Figure 13b

After the first shot, the action will automatically cock for successive firing and the action will be indicated as cocked by the cocking indicator (you can easily feel if the action is cocked by sliding your hand over the cocking indicator and it is protruding from the stock the action is cocked). A gentle squeeze of the trigger is all that is necessary for successive firing and is best for accuracy. (See Fig: 13a and 13b)

5. The rifle will fire one shot with every squeeze of the trigger until the magazine is empty. When the guns stops firing, take your finger off the trigger and push the safety button from left to right so as to cover the red ring / engage the safety. Remove the magazine, check the chamber, make sure it is empty and then repeat loading and firing instructions as desired.

If you want to stop firing, immediately engage the safety button. Unload the firearm as stated in Unloading Instructions. (See Fig: 13c)



Figure 13c

## **WARNING**

If there is any reason to suspect that a bullet or projectile is obstructing the barrel, immediately unload the firearm (See Unloading Instructions) and check the firing chamber and the bore. It is not sufficient to merely retract the bolt and look at the rear of the barrel (firing chamber). A bullet may be lodged some distance down the barrel where it can not easily be seen. Check the bore by using a cleaning rod to pass through the barrel. If a bullet is in the bore, **DO NOT ATTEMPT TO SHOOT IT OUT WITH ANOTHER CARTRIDGE, OR BLOW IT OUT WITH A BLANK CARTRIDGE OR A CARTRIDGE FROM WHICH THE BULLET HAS BEEN REMOVED. SUCH TECHNIQUE(S) CAN GENERATE EXCESSIVE PRESSURE, DAMAGE THE FIREARM AND CAUSE SERIOUS PERSONAL INJURY.** If the bullet can be removed with a cleaning rod, clean any unburned powder grains from the bore, chamber & mechanism before resuming shooting. If the bullet can not be dislodged by tapping it with a cleaning rod, take the firearm to a gunsmith.


## WARNING (Mechanical Malfunctions)

STOP SHOOTING IMMEDIATELY AND UNLOAD YOUR FIREARM if your firearm develops: a mechanical malfunction; binding or stoppage; spitting powder/gas; a cartridge primer is punctured; a cartridge case is bulged or ruptured; or the sound on firing does not sound quite right. Do NOT try one more shot but unload your firearm and take it and the ammunition to a gunsmith for examination. Do not assume that the rifle is empty merely because the bolt remains open. An unfired cartridge or a fired cartridge case jammed between the bolt and the barrel can prevent the bolt from closing. Always look in the chamber to make sure! Should a jam occur, clear it as follows: 1. point the muzzle in a safe direction, engage the safety and remove the magazine 2. Pull back the bolt 3. remove the jammed cartridge or case by shaking the rifle or picking it out with your fingers.

## CLEANING AND MAINTENANCE OF THE RIFLE

1. Materials needed to clean this rifle are a rifle cleaning rod, cotton bore patches, brass bore brush, powder solvent, a small soft brush and good quality gun oil.


2. Make sure the rifle is unloaded and the safety is engaged, see unloading instructions.

 **WARNING:** Lead or lead compounds are known to the State of California to cause cancer, birth defects and/or reproductive toxicity. Those who clean firearms should take protective measures to avoid contact or exposure to such chemicals.

3. Using the bore brush with powder solvent scrub the barrel and chamber to remove any powder and lead residue in the bore. Secondly, swab the bore with cotton patches soaked in solvent. Always and lastly, swab with cotton patch with gun oil to coat and protect the bore from rust and corrosion.

4. Any powder fowling on the receiver or breech face of the bolt can be easily cleaned with a brush and powder solvent.

5. All external metal surfaces should be wiped down with light coat of rust preventative. Avoid using too much oil as dust and/or debris can get trapped in the oil creating a gum that in time will cause misfires.

6.  **CAUTION** in using solvents in gun bore cleaning. Prolonged or excess contact with finish or bluing can damage the gun's finish. Be sure to wipe away all excess solvent and then lubricate with oil.



7. A gun should be cleaned after firing. In addition, metal external parts should be wiped with an oiled cloth after handling. A light oil is ordinarily all that is necessary in cleaning if the gun has not been fired or fired very little. If a gun is used frequently, it must be cleaned after each firing and regularly serviced by a professional gunsmith. If the gun has been stored, remove all excess oil and/or grease before firing. Always check to be sure that no cleaning patch or other obstruction remains in the bore or chamber before firing.

8. Make sure that polymer parts are not exposed to gun cleaning solvents and if so they should be wiped off as soon as possible. Polymer parts may be cleaned with a good polymer cleaning solution (see your local gun shop).

### **ONE YEAR LIMITED WARRANTY**

This US SPORTING GOODS, Inc. firearms is warranted to the original retail customer for One Year from date of purchase against defects in material and workmanship. All parts and labor or replacement at our option are covered.

Transportation to and from our repair facilities, government fees, damage caused by failure to perform normal maintenance, sales outside the United States, damage due to use of high velocity, high pressure, reloaded or other nonstandard ammunition, or any unauthorized repair, modification, misuse, abuse, or alteration of the product is not covered by this Limited Warranty.

Any implied warranties, including the implied warranties of merchantability and fitness for a particular purpose, are limited to one year from date of original retail purchase. Consequential or incidental damages and/or expenses, or any other expenses are not covered by this warranty.

To obtain warranty performance send your firearm with proof of retail purchase, freight prepaid to:

US SPORTING GOODS, Inc.  
1426 King Street  
Cocoa, FL 32922

## **WARNING**

Altering or modifying parts and/or safeties is dangerous and will void the warranty. This recoil operated semi-automatic rifle was manufactured to perform properly with the original parts as designed. It is your duty to make sure any parts you buy are made for this firearm and are installed correctly and that neither the replacements nor originals are altered or changed. Your gun is a complex precision tool with many parts that must relate correctly to other parts in order for proper and safe operation. Putting a gun together wrong or with incorrect or modified parts can result in a damaged gun, danger, and injury or death to you and others through malfunction. Always have a qualified gunsmith work on your gun or at least check any work not performed by a gunsmith.

### **ALL PARTS ORDERS ARE SUBJECT TO A \$10.00 CHARGE FOR SHIPPING AND HANDLING.**

Please state Model, Caliber, Serial Number, and Finish Color when ordering. For parts and service contact: US SPORTING GOODS, Inc., 1426 King St., Cocoa, FL 32922. Phone: (321) 639-4842.

# MP-161K

## HUNTING SELF-LOADING CARBINE

### INSTRUCTION MANUAL

#### 1 GENERAL

##### WARNING!

1.1 BEFORE USING THE CARBINE, FAMILIARIZE YOURSELF WITH THIS INSTRUCTION MANUAL. It contains the basic specifications, warnings, descriptions of design and operating instructions for the carbine.

##### 1.2 WARNING!

REMEMBER THAT ANY FIREARM, THOUGH IT HAS VARIOUS SAFETIES, IS EXTREMELY DANGEROUS IF CARELESSLY HANDLED. THAT IS WHY READ AND UNDERSTAND THE OPERATING INSTRUCTIONS CONTAINED IN SECTIONS 5 AND 6 OF THIS MANUAL.

1.3 **WARNING!** Before using the carbine, remove factory lubricants from it and then apply gun oil as described under item 7.5 of this Instruction Manual.

1.4 Since the carbine is constantly refined to improve its reliability and performance, it is subject to change without special notice in this Instruction Manual.

#### 2 BASIC DATA

2.1 The MP-161K Hunting Self-loading Carbine is intended for small-game hunting. It can also be used

for sporting and training shooting. The Carbine is chambered for a rimfire 5,6 mm (.22 LR) cartridge.

2.2 The basic parameters of the Carbine and their values are given in Table 1.

Table 1

Parameter name	Value
Caliber	5,6 mm (.22LR)
Magazine capacity	9
Overall dimensions length width height	1000 mm 75 mm 185 mm
Barrel length, max	500 mm
Weight, max	2,9

2.3 Firing accuracy should be checked by shooting a 4-shot group at a 100 m range from a rest in sitting position and measuring the distance between the centers of two the most widely spaced hits (i.e. the center-to-center distance). For good-quality ammunition, the mean center-to-center distance should not exceed 25 mm. It should be understood that firing accuracy substantially



depends on ammunition characteristics and may widely vary.

### 3 COMPLETE DELIVERY

The Carbine comes complete as given in Table 2.

Part Name	Qty
Carbine (w/two magazines)	1
Packing Box	1
Instruction Manual	1

### 4 DESIGN AND OPERATION

4.1 The MP-161K Hunting Self-loading Carbine consists of a barrel with a receiver and a fore-end and a firing mechanism with a stock (Fig. A.2). The barrel with receiver is fitted to the firing mechanism with an attaching screw 35.

4.2 The automatic system of the Carbine operates on the blow-back principle. The automatic cycle involves the following operational steps:

- opening the action;
- withdrawal of a live cartridge (or spent cartridge case) from the chamber and throwing it clear of the receiver 1;
- pulling the trigger bar 43 downward to disengage it from the sear 42.

Forward movement of the bolt caused by pressure of the recoil spring 28 activates the following operations:

- feeding the cartridge from the magazine 36 into the chamber;
- pulling the trigger bar upward to allow the sear to be engaged by it;
- cocking the hammer 38;
- closing the action.

4.3 Safe handling the Carbine is ensured with a non-automatic safety. Push the safety button to the right to engage the safety. To disengage the safety push this button to the left and a red ring will be exposed on the button.

When the hammer is cocked, the hammer strut will partially protrude beneath the trigger guard indicating that the Carbine will fire if the trigger is pulled and the safety is disengaged. When you fire in the dark, you may easily find this cocking indicator by touch.

4.4 After all rounds are fired from the chamber, the bolt moves rearward and locks.

4.5 The list of the MP-161K parts and assembly units is in Table A.1.

### 5 NOTES ON USE

- 5.1 Steps to be performed before shooting:
- load the magazine with cartridges as follows: with the magazine held with your hand insert cartridges one by one into it. While inserting, apply pressure on the cartridge with your thumb to allow the cartridge to engage the top lips on the side walls of the magazine body and push the cartridge until its flange is pressed against the rear wall of the magazine body. To ease insertion, you may pull the button on the magazine side wall downward;

- insert the magazine into the opening in front of the trigger guard;
- with the bolt handle move the bolt fully rearward and release it. The cartridge will be fed into the chamber;
- disengage the safety.

#### 5.2 Steps to be performed after shooting:

- remove the magazine by moving the magazine catch fully rearward and pulling down at the same time the protrusion on the magazine cover with your index finger;
- move the bolt fully rearward and through the opening in the receiver check that the chamber is empty. Release it.
- point the Carbine in a safe direction and pull the trigger to release the hammer;
- engage the safety.

5.3 The use of other cartridge brands than those used by the Manufacturer for zeroing the Carbine may cause the deviation of the mean point of impact from the point of aim. Re-zero the Carbine with the ammunition you are going to use. Fire 4-shot groups at a 25-50 m range. Join each of the two pairs of hits with a straight line. Determine a center of each straight line and join the centres with a third straight line. The center of this third line is a mean point of impact.

To shift the mean point of impact to the right, turn the windage screw (Fig. A.7) counterclockwise or turn it clockwise to shift the mean point of impact to the left.

To shift the mean point of impact upward, turn the elevation screw 19 (Figs A.4, A.8) counterclockwise or

turn it clockwise to shift the mean point of impact downward.

5.4 The Carbine is fitted with a height adjustable cheekpiece and a length adjustable buttplate.

For height adjustment of the cheekpiece 33, loosen two screws 32 (Fig. A.6) and adjust the cheekpiece to the required height. Tighten the screws. The maximum height of the cheekpiece can be adjusted to 40 mm.

For length adjustment of the buttplate to four screws 32 (Fig. A.6) and adjust the buttplate to the required length. Tighten the screws. The buttplate length can be adjusted within 24 mm in 8 mm steps.

## 6 SAFE HANDLING RULES

6.1 Any firearm, though it has various safeties is DANGEROUS to peoples' life and health if carelessly handled. That is why observe all safety measures and keep in mind that ignorance of safety rules may cause serious physical injury.

6.2 ALWAYS treat your Carbine as if it is loaded and ready to fire. NEVER point this Carbine at any people, pets or anything you do not intend to shoot even if it is unloaded. When loading, unloading, maintaining or cleaning, ALWAYS be sure the barrel is pointed in a safe direction and ALWAYS keep your finger off the trigger.

6.3 DO NOT disengage the safety until the Carbine is pointed at a target. When pointing, keep your finger off the trigger unless your are ready to fire. Learn to rest your finger on the trigger guard but not on the trigger.

6.4 Never pull the Carbine toward you by the muzzle. Never put your hand over the muzzle.

6.5 NEVER leave your Carbine where it could fall and fire.

6.6 Know your target and what is beyond it. Ask yourself what your bullets will hit if they miss the target or pass through the intended target. NEVER shoot at hard flat surfaces or water....there is a danger of ricochet.

6.7 When receiving a Carbine, NEVER accept anyone's word that it is "unloaded". Your should immediately remove the magazine, pull the bolt rearward and check to make sure that the chamber is empty.

6.8 Keep your Carbine separately from ammunition and beyond the reach of children and untrained individuals. When out of a storage place, NEVER leave the Carbine unattended.

6.9 Before performing any operations on the Carbine (smooth hammer release, cleaning, disassembly, etc), your MUST check to make sure it is unloaded.

6.10 ALWAYS empty the Carbine before entering a house, car, boat or any building or camp. NEVER load/unload the Carbine inside a vehicle or building (except a shooting room).

6.11 Carbines and alcohol or drugs DON'T MIX! DON'T TAKE any alcoholic beverages or drugs before or during shooting activities.

6.12 DO NOT alter or modify your Carbine. Do not try to change the trigger pull, remove the safety or any internal safety device as it may cause accidental firing.

6.13 Wear hearing protection and shooting glasses when using your Carbine.

6.14 Use the ammunition for which your Carbine was originally chambered.

6.15 Use cartridges before the date indicated on a cartridge box.

6.16 Before loading, make sure the barrel bore is not clogged with snow, dirt or debris.

6.17 Stop shooting immediately if sound on firing differs from the previous sound. Unload your Carbine and examine the barrel, receiver and other parts.

If any cartridge component parts jammed inside the barrel, remove them before resuming shooting.

If a blockage is in the bore, do not attempt to shoot it out with another cartridge even if it is a blank cartridge or a cartridge from which the bullet has been removed.

6.18 WARNING! Nonobservance of the requirements of items 6.14-6.17 may cause damage to the barrel or serious injury to a shooter or those who stand near him.

6.19 WARNING! If your Carbine fails to fire when the trigger is pulled, keep it pointed at the target for 60 seconds. Sometimes slow primer ignition will cause a "hang fire" and the cartridge will go off after a shot pause. If it still fails to fire, keep the barrel pointed in a safe direction so that the muzzle end and chamber are directed away from you, and unload your Carbine.

6.20 If the barrel on your Carbine is bulged, its mechanisms malfunction, a cartridge case is ruptured or if it has some more damages, have it examined and repaired by a qualified gunsmith. DO NOT TRY ONE MORE SHOT, if your Carbine develops the above defects.

## 7 MAINTENANCE

7.1 Proper handling and maintenance extend the service life of the Carbine and ensure its trouble-free functioning. Disassemble the Carbine completely when it is necessary only.

7.2 For normal care (inspection, cleaning and oiling) field strip the Carbine as follows (refer to Figs A.2,A.3, A.4):

- push the magazine catch to the rear and remove the magazine 36;
- move the bolt 2 rearward and check to make sure that the chamber is empty;
- engage the safety;
- remove the attaching screw 35;
- separate the barrel group (barrel/receiver/fore-end) from the stock;
- remove the locking pin 15 by pulling it upward;
- remove the cap 16 together with recoil spring guide 11 and recoil spring 10;
- sink the plunger into the handle 4 in the direction of arrow A. Turn the handle in the direction of arrow B and remove it;
- remove the bolt 2.

7.3 Reassembly is in the reverse order. After reassembling, check the Carbine for functioning (do it without magazine):

- disengage the safety;
- move the bolt completely rearward and release it;
- the bolt being acted upon by the recoil spring should move rearward fast without stops;
- pulling the trigger should release the hammer;
- check the safety for proper functioning.

7.4 For cleaning and lubricating the firing mechanism, remove the screws 32, 33 (Fig. A.4) which keep the right-hand and left-hand stocks together. Separate these stocks. Now you can remove the firing mechanism for cleaning and lubricating.

### 7.5 Cleaning and Lubricating

7.5.1 Keep your Carbine clean and lubricated. Cleaning materials ( soft fabric, cotton patches, flax combings) must be clean and must not contain sand or dust. The Carbine should be cleaned after each firing. In winter, allow the Carbine to warm-up indoors for 2-3 hours and only then clean it. Always clean the barrel bore from the chamber end to the muzzle end. Never try to push the cleaning cloth back from the muzzle end.

**TAKE CARE:** As usual bore cleaning solvents are strong, prolong and excess contact with finish or bluing can damage the Carbine's finish. Wipe away all excess solvent and then lubricate with a gun oil.

- 7.5.2 To clean the barrel bore:
- coat the barrel bore with a gun oil;
  - wipe the barrel bore and chamber with a cleaning cloth;
  - repeat oiling and cleaning of the barrel bore until powder fouling and lead are removed fully.

Note that the barrel bore is not chrome-lined for ensuring high shooting accuracy. Therefore it requires cleaning after each firing and regular rust preventive oiling.

7.5.3 The Carbine parts should be given only a light coat of oil especially when you use the Carbine at negative temperatures.

## 8 MANUFACTURER

8.1 The MP-161K Carbine has been manufactured by FGUP "Izhevsky Mekhanichesky Zavod".

8.2 The Manufacturer's address:  
FGUP "Izhevsky Mekhanichesky Zavod"  
Promyshlennaya, 8  
Izhevsk 426063, Russia

## 9 NOTES ON CERTIFICATION

The MP-161K Hunting Semi Auto Carbine complies with the requirements of the Specifications MP-161K.776314.005 TU, Russian state standard GOST P 50529-2010 and the criminalistical requirements of the Russian Ministry of Internal Affairs concerning limitations on circulation of civil and service weapons.

The MP-161K Hunting Semi Auto Carbine has been certified as compliant with the safety requirements. It has Certificate of Compliance POCC RU.МЖ03.В01974 which is valid from October 19, 2010 to October 18, 2013. The Certificate of Compliance has been granted by the Udmurt Certification Center's Certifier of Civil and Service Weapons and Ammunition, Reg.No. POCC RU.0001.11МЖ03.

Карабин охотничий  
самозарядный МР-161К.  
Паспорт на русс. и англ. яз.  
И. Зак. 1814

## 10 CERTIFICATE OF ACCEPTANCE AND PACKING

The MP-161K Hunting Semi Auto Carbine No. \_\_\_\_\_ has been accepted in compliance with Specifications MP-161K.776314.005 TU and found fit for service.

Date of manufacture \_\_\_\_\_

Accepted by \_\_\_\_\_  
signature of person in charge of acceptance

It has been given a preservative treatment and packed by the Manufacturer in compliance with the requirements specified in the effective specifications.

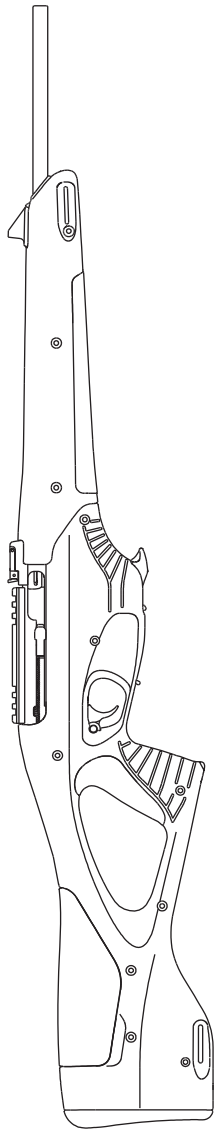
Date of preservation \_\_\_\_\_

Preserved by \_\_\_\_\_  
signature of person in charge of preservation

The storage period for the carbine kept in the factory intact packing is 24 months from the date of preservation by the Manufacturer. Upon expiration of the above period the Carbine must be represerved.

This storage period is for the carbine kept in air-ventilated storehouses (like stone, concrete, or thermally insulated metal storehouses) where ambient temperature and humidity vary less than outdoors. Storehouses may be located in various macroclimatic areas including tropical areas.

**ПРИЛОЖЕНИЕ А (справочное)**  
**APPENDIX A (reference)**



**Рисунок А.1 - Карабин охотничий самозарядный МР-161К**  
**Fig. A.1 - MP-161K Hunting Self-loading Carbine**

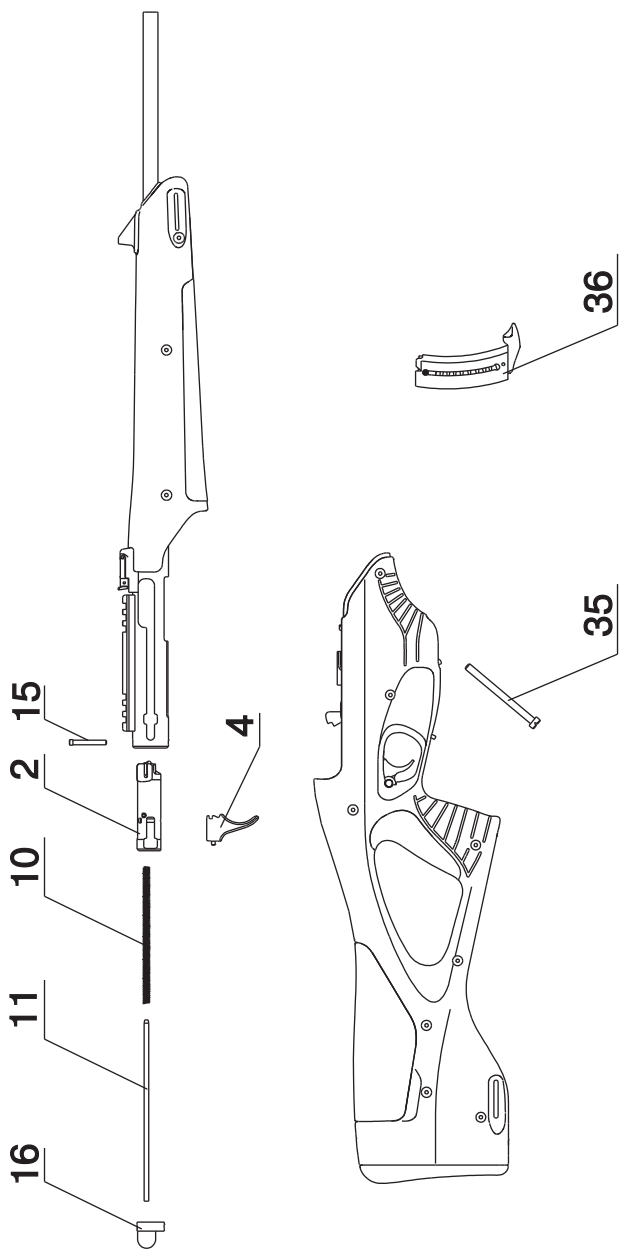


Рисунок А.2 - Схема частей и механизмов самозарядного карабина МР-161К при неполной разборке.  
 Fig. A.2 - MP-161K Parts and Mechanisms. Incomplete Stripping.

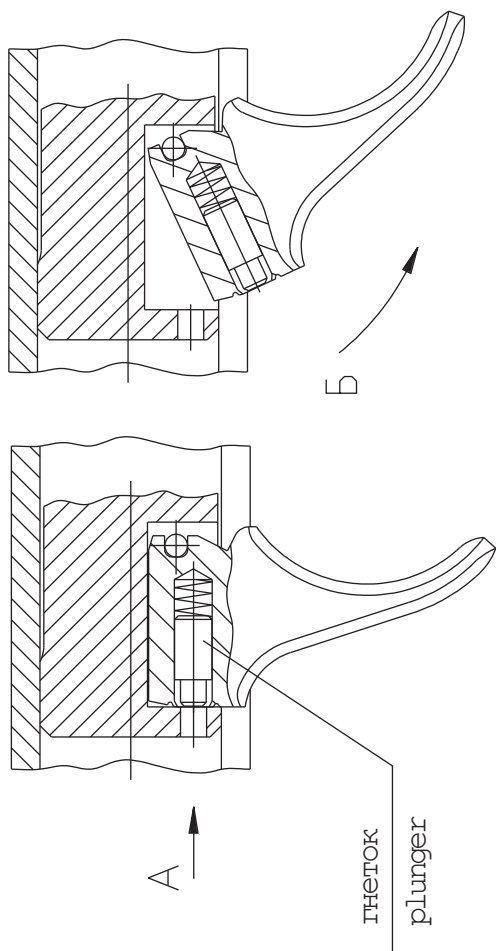


Рисунок А.3 - Схема разборки затвора с рукояткой.  
Fig. A.3 - Disassembly Diagram for Bolt and Handle.



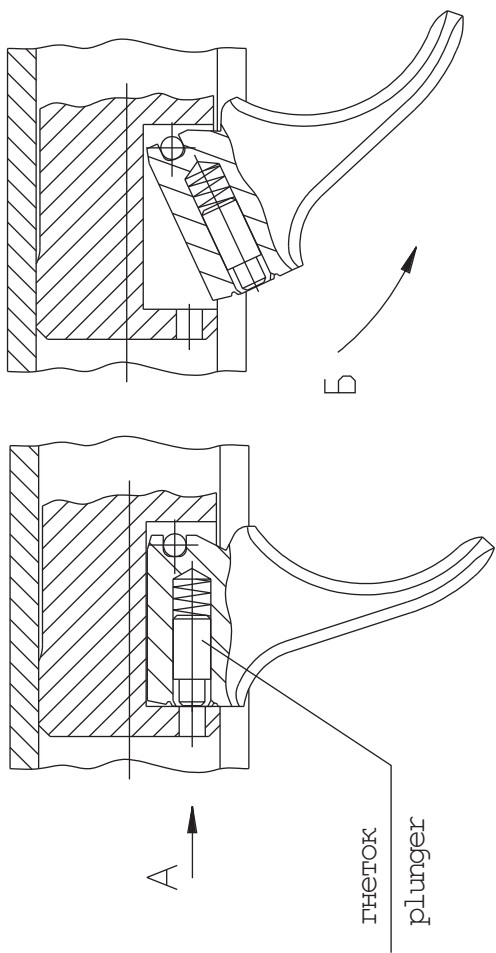


Рисунок А.3 - Схема разборки затвора с рукояткой.  
Fig. A.3 - Disassembly Diagram for Bolt and Handle.

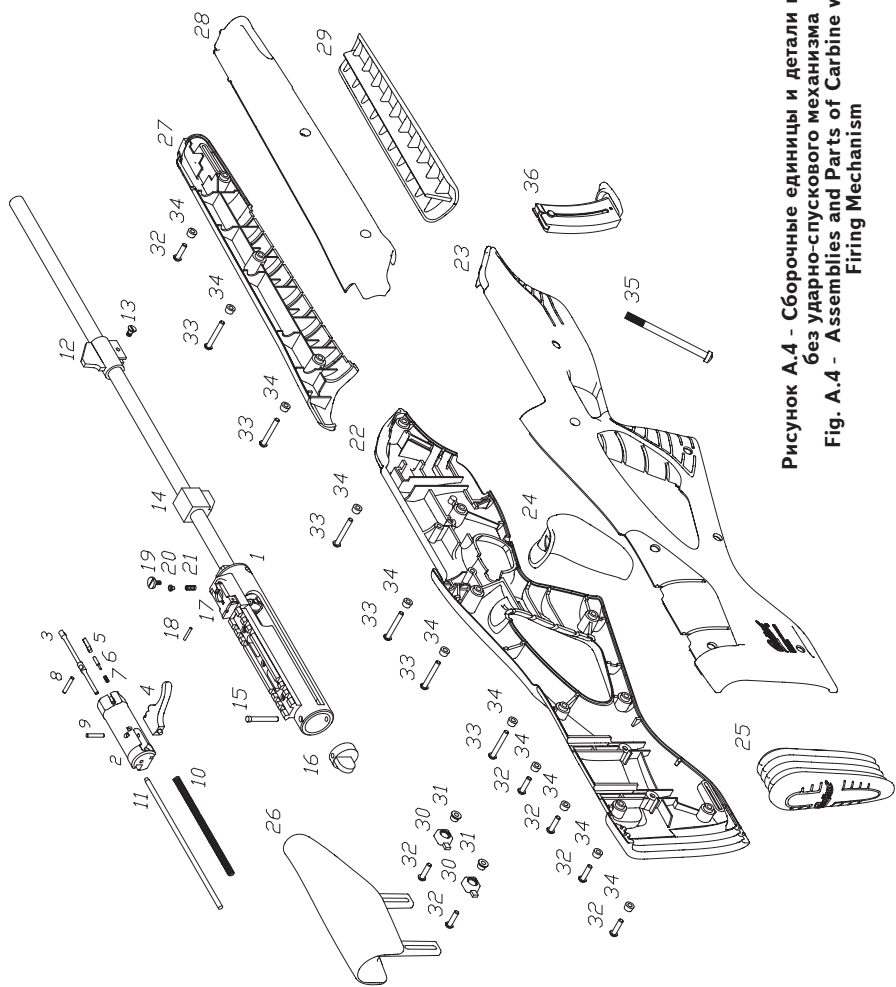


Рисунок А.4 - Сборочные единицы и детали карабина без ударно-спускового механизма  
 Fig. A.4 - Assemblies and Parts of Carbine without Firing Mechanism

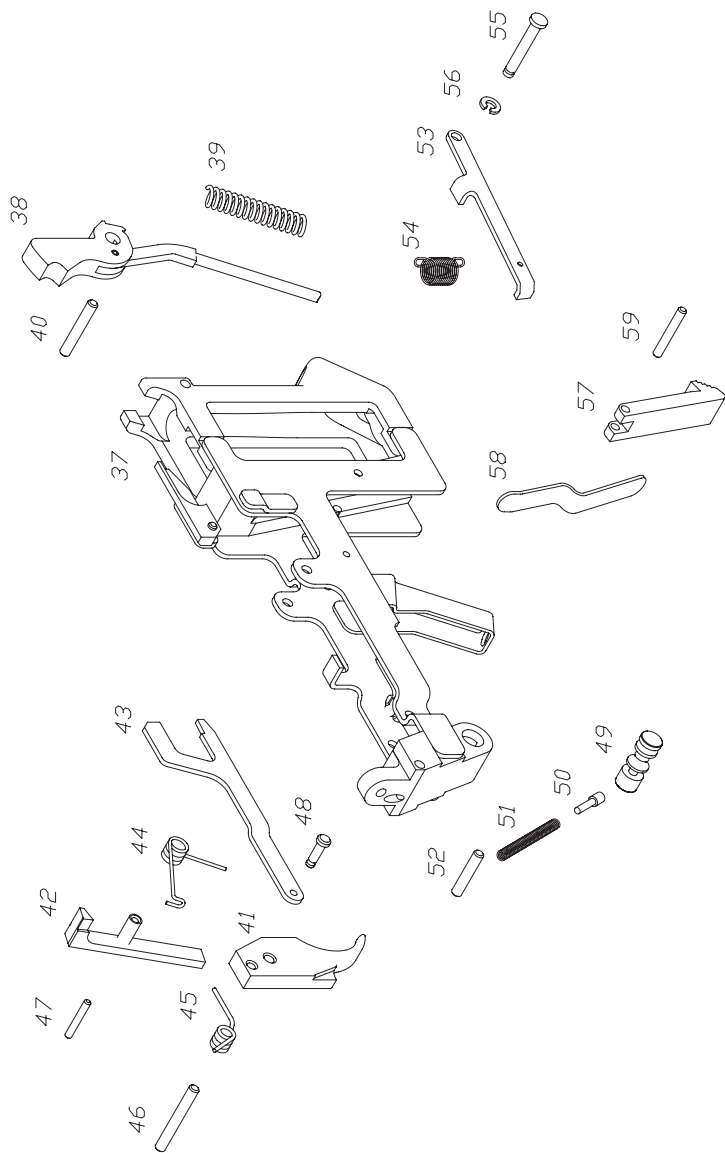


Рисунок А.5 - Ударно-спусковой механизм карабина.  
 Fig. A.5 - Firing Mechanism.

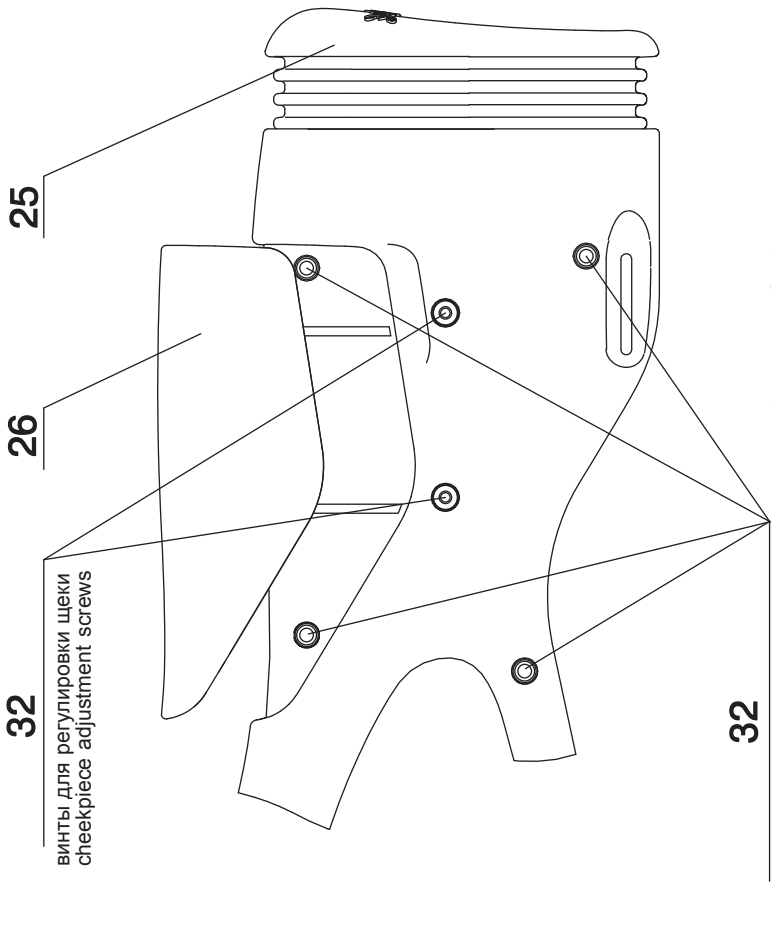


Рисунок А.6 - Регулируемая щека и регулируемый затыльник приклада.

Fig. A.6 - Adjustable Cheekpiece and Buttplate.

Таблица А.1

Обозначение на рис. А.2, А.4, А.5, А.6	Наименование	Количество
1	2	3
1	Кожух со стволом	1
2	Затвор	1
3	Ударник	1
4	Рукоятка собранная	1
5	Выбрасыватель	1
6	Гнеток выбрасывателя	1
7	Пружина выбрасывателя	1
8	Ось (ударника)	1
9	Ось (рукоятки)	1
10	Пружина возвратная	1
11	Направляющая (возвратной пружины)	1
12	Мушка	1
13	Винт (мушки)	1
14	Ползун	1
15	Чека	1
16	Затыльник	1
17	Прицел собранный	1
18	Ось (прицела)	1
19	Винт вертикальных поправок	1
20	Фиксатор (прицела)	1

Table A.1

Part No. in Figs A.2, A.4, A.5, A.6	Part Name	Qty
1	2	3
1	Barrel w/receiver	1
2	Bolt	1
3	Firing Pin	1
4	Handle assy	1
5	Extractor	1
6	Extractor Plunger	1
7	Extractor Spring	1
8	Firing Pin	1
9	Handle Pin	1
10	Recoil Spring	1
11	Recoil Spring Guide	1
12	Front Sight	1
13	Front Sight Pin	1
14	Slide	1
15	Locking Pin	1
16	Cap	1
17	Rear Sight assy	1
18	Rear Sight Pin	1
19	Elevation Screw	1
20	Rear Sight Retainer	1

Продолжение таблицы А.1

1	2	3
21	Пружина (прицела)	1
22	Левая половинка приклада	1
23	Правая половинка приклада	1
24	Накладка на pistolетную рукоятку	1
25	Затыльник приклада	1
26	Щека	1
27	Левая половинка цевья	1
28	Правая половинка цевья	1
29	Накладка цевья	1
30	Втулка (щеки)	2
31	Гайка (втулки щеки)	2
32	Винт (M4x16)	7
33	Винт (M4x30)	6
34	Глазок	11
35	Винт (стяжной)	1
36	Магазин	1
37	Корпус УСМ	1
38	Курок с тягой	1
39	Пружина боевая	7
40	Ось (курка)	1
41	Крючок спусковой	1
42	Шептало	1
43	Тяга (спуска)	1
44	Пружина шептала	1

Continued

1	2	3
21	Rear Sight Screw	1
22	Left-hand Stock	1
23	Right-hand Stock	1
24	Pistol Grip Strap	1
25	Buttplate	1
26	Cheekpiece	1
27	Left-Hand Fore-end	1
28	Right-Hand Fore-end	1
29	Fore-end Strap	1
30	Cheekpiece Bushing	2
31	Cheekpiece Bushing Nut	2
32	Screw M4x16	7
33	Screw M4x30	6
34	Washer	11
35	Attaching Screw	1
36	Magazine	1
37	Firing Mechanism Housing	1
38	Hammer w/strut	1
39	Mainspring	7
40	Hammer Pin	1
41	Trigger	1
42	Sear	1
43	Trigger Bar	1
44	Sear Spring	1

Продолжение таблицы А.1

1	2	3
45	Пружина спускового крючка	2
46	Ось (крючка)	1
47	Ось (шептала)	1
48	Ось тяги	1
49	Предохранитель	1
50	Гнеток предохранителя	1
51	Пружина гнетка	1
52	Ось	1
53	Задержка затворная	1
54	Пружина затворной задержки	1
55	Ось задержки	1
56	Шайба (оси задержки)	1
57	Защелка магазина	1
58	Пружина защелки магазина	1
59	Штифт (защелки магазина)	1

Continued

1	2	3
45	Trigger Spring	2
46	Trigger Pin	1
47	Sear Pin	1
48	Trigger Bar Pin	1
49	Safety	1
50	Safety Plunger	1
51	Plunger Spring	1
52	Pin	1
53	Bolt Stop	1
54	Bolt Stop Spring	1
55	Bolt Stop Pin	1
56	Bolt Stop Pin Washer	1
57	Magazine Catch	1
58	Magazine Catch Spring	1
59	Magazine Catch Pin	1

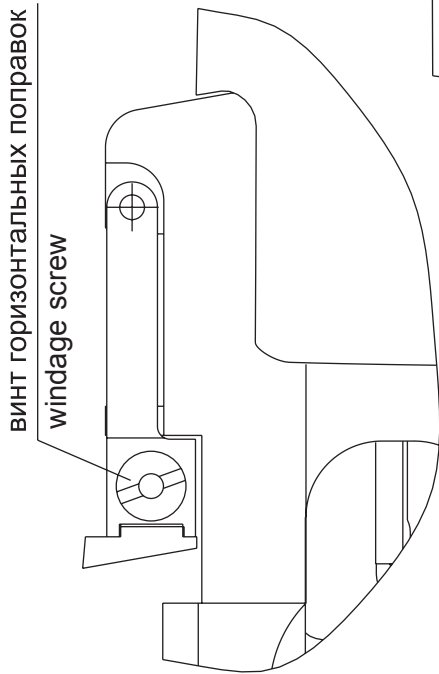


Рисунок А.7 - Прицельные приспособления, вид справа.

Fig. A.7 - Sighting Devices. Right-side view.

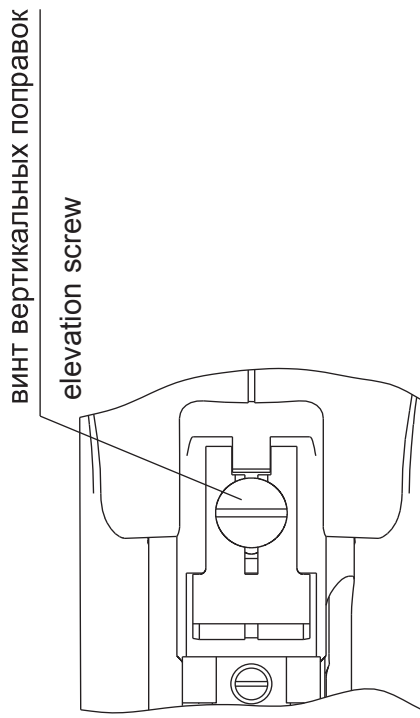


Рисунок А.8 - Прицельные приспособления, вид сверху.

Fig. A.8 - Sighting Devices. Top view.



 **WARNING**

Children are attracted to and can operate firearms that can cause severe injuries or death. Prevent child access by always keeping guns locked away and unloaded when not in use. If you keep a loaded firearm where a child obtains and improperly uses it, you may be fined or sent to prison.

 **ADVERTENCIA**

A los niños les atraen las armas de fuego y los pueden hacer funcionar. Ellos pueden causarse lesiones graves y la muerte. Evite que los niños tengan acceso a las armas de fuego guardándolas siempre con llave y descargadas cuando no las este utilizando. Si usted tiene un arma de fuego cargada en un lugar en que un niño tiene acceso a ella y la usa indebidamente. Le pueden dar una multa a enviarlo a la cárcel.

**Importer:**

US SPORTING GOODS, Inc.  
1426 King Street  
Cocoa, FL 32922

**Manufacturer:**

Izhevsky Mekhanichesky Zavod  
8, Promyshlennaya Str.,  
426063 Izhevsk, Russia