

LaserMax

CENTERFIRE®

LASER SIGHT



Operator's Manual

S&W® J-FRAME 438 | 442 | 637 | 638 | 642

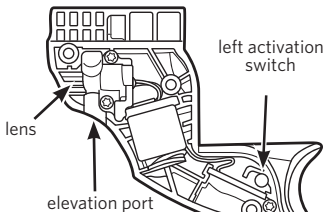
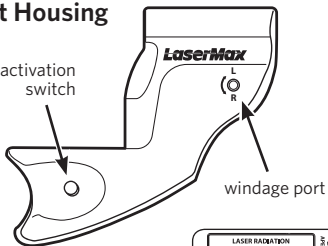
CF-JFRAME-2

CF-JFRAME-2G

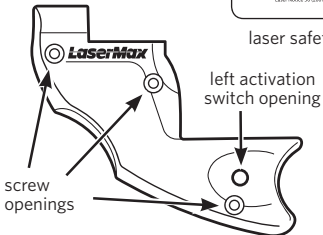
PARTS IDENTIFICATION

Right Housing

right activation switch



Left Housing



laser safety label



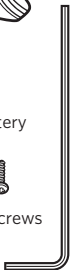
fit tool



1/3N battery



mounting screws



adjustment tool

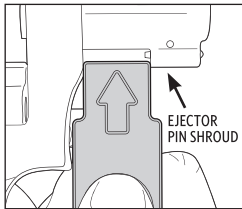


See this sight installed at www.youtube.com/LaserMaxInc.

! **IMPORTANT:** Prior to installation, battery change, cleaning or maintenance, follow the firearm operator's manual to ensure that the firearm is unloaded.

VERIFYING COMPATIBILITY

1. Rotate cylinder to open position so that ejector pin is visible.
2. Position supplied *fit tool* in area below muzzle as shown. Arrow on *fit tool* should be facing operator and pointing towards barrel.
3. If the end of *fit tool* fits into the space between ejector pin shroud and frame, this CenterFire® laser will fit. See illustration at right to identify proper orientation of *fit tool*. If *fit tool* does not fit inside this space, please contact the LaserMax Customer Service Department at 1.800.527.3703 for an alternate J-Frame laser.

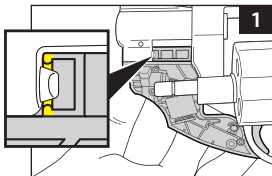


For a video tutorial go to www.youtube.com/LaserMaxInc

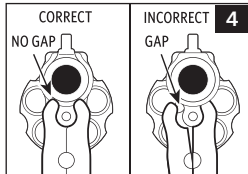
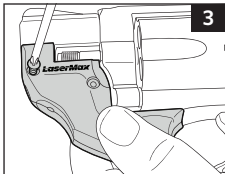
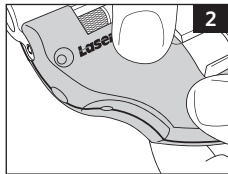
INSTALLATION

! This state-of-the-art laser sighting system is designed for use with a specific pistol platform. Do not attempt installation on any other firearm model/s.

1. Rotate empty cylinder to closed position.
2. Align channel in *right housing* with revolver trigger guard, ensuring that *right housing* is flush with revolver ejector pin shroud (figure 1).
3. **IMPORTANT:** The front of *right housing* should be flush with front of revolver muzzle and tab (yellow highlight) in *right housing* should be positioned behind revolver ejector pin shroud. (figure 1). Press firmly in place.



YouTube



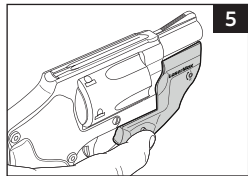
4. Close empty cylinder.
5. Mate left housing with *right housing*, ensuring that *activation switch* passes through opening in *left housing* (figure 2). Press together to remove gap.
6. Install three (3) *mounting screws* into *left housing* with a Phillips screwdriver (not provided) starting with screw closest to barrel. Do not overtighten.
7. Confirm that there is no visible gap between *right housing* and ejector pin shroud. (figure 4).



Important: CenterFire® *mounting screws* are self-tapping; extra care should be taken when installing them for the first time to ensure that they are screwed in straight. Improper installation could cause the threads to strip.

OPERATION

1. To turn the laser on, press in on the *activation switch* from either side (figure 5). Press again to turn the laser off.
2. To switch aiming point from pulse to steady, press and release the *activation switch* from either side to activate laser. Then, press and hold the *activation switch* for 5 seconds. The laser mode will change. Repeat this process to return to the previous mode.
3. To save power and prevent inadvertent battery drain,

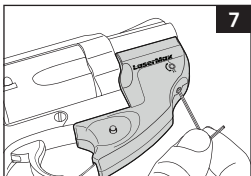
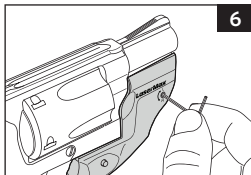


the CenterFire® will shut off automatically after a ten minute period of inactivity. Cycle the *activation switch* to turn laser back on.


ALIGNING THE LASER

1. Verify proper alignment by comparing laser aiming point to iron sights at a distance of 10 yards for initial alignment. The laser dot should be slightly above the iron sights.
2. To make adjustments, insert *adjustment tool* into one of the two alignment ports (figures 6 & 7) and slowly rotate the tool while comparing laser position on target to fixed sights. Important: Do not rotate *adjustment tool* more than one full turn in either direction from the factory position. This may cause damage to the laser and void the warranty. A one quarter turn will result in a movement of about 3 inches at 10 yards
3. Windage adjustment: with muzzle pointing forward and *adjustment tool* inserted into the *windage port*, a clockwise turn will shift the laser aiming point left and a counterclockwise turn will shift the laser beam right (figure 6).
4. Elevation adjustment: with muzzle pointing forward and *adjustment tool* inserted into the *elevation port*, a clockwise turn will shift the laser beam up up and a counterclockwise turn will shift the laser beam down (figure 7).
5. Verify zero by shooting a target and making additional adjustments as needed.

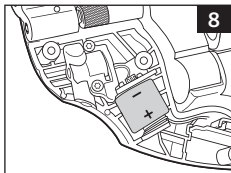
Note: a slight shift in alignment may be observed after firing the first time. Recheck alignment after break in and readjust as necessary.



BATTERY REPLACEMENT

 *TIP: During periods of non-use, test the LaserMax laser periodically to ensure adequate battery levels.*

1. Remove *mounting screws* from *left housing* and separate it from the revolver's trigger guard.
2. Lift expended *1/3N Lithium battery* out of *right housing*.
3. Install a fresh *1/3N Lithium battery* with positive (+) side facing toward coiled spring (figure 8).
4. Reinstall *left housing* as previously described in INSTALLATION section, Step 5.



CLEANING & MAINTENANCE

After repeated fire, the *lens* may become clouded with gunpowder residue. For best results, it is recommended that this area be cleaned, along with the firearm, after each use. To clean the *lens*, follow these steps.

1. Keep firearm pointed in a safe direction.
2. Confirm laser is off.
3. Dampen the end of a cotton swab with isopropyl alcohol.
4. Apply dampened swab to *lens* and polish in a small circular pattern. Be sure to clean around edges of *lens*.

Firearm should be cleaned and lubricated exactly as directed in the S&W® Owner's Manual. Excess lubricant can interfere with the proper function of both firearm and CenterFire® laser. LaserMax components should never be submerged or flushed with cleaning solvents. Failure to adhere to these guidelines may cause damage and void the factory warranty.



View complete installation and battery replacement video tutorials at www.youtube.com/LaserMaxInc.

REPLACEMENT PARTS

LMS-AT50	adjustment tool
LMS-13N	replacement battery
LMS-2x13N	2-pack replacement batteries
CF-MS	mounting screws



**IF YOU EXPERIENCE AN
ISSUE WITH YOUR LASER
PLEASE DO NOT RETURN IT
TO THE STORE.**

Contact LaserMax Customer Service: ☎ 800-527-3703



CF-JFRAME-2

Red Laser

CLASS 3R VISIBLE LASER

Output Power: <5mW

Wavelength: 600-700nm

CF-JFRAME-2G

Green Laser

CLASS 3R VISIBLE LASER

Output Power: <5mW

Wavelength: 510-535nm

REMINDER

Aiming a laser beam at moving vehicles including boats, aircraft, trains, and construction equipment may be illegal. Check current applicable laws and follow them accordingly.

DANGER

Laser radiation is emitted from the front aperture of the laser when the switch is activated.

WARNING

Avoid direct eye exposure to beam. Do not point laser at anything you do not wish to destroy.

NOTICE:

The FDA requires the label supplied with your laser be affixed to the outside of the gun near the laser aperture.

LASERMAX LIMITED WARRANTY



LaserMax is pleased to offer a five (5) year limited warranty for this product. To take advantage of this coverage, the product must be registered no later than 90 days after purchase.

This product may be registered by completing a Registration Form which may be found at www.lasermax.com or by contacting the LaserMax Customer Service Department at 1-800-527-3703. The LaserMax Limited Warranty extends specific legal rights to the registrant. Other rights, which vary from state to state, may also apply. This product is warranted to be free from defects in material and workmanship at the time of purchase. This limited warranty does not cover expendable parts (ex: batteries), that have definite and predictable life expectancies. This warranty does not cover products that LaserMax determines have been exposed to abnormal use in any way. Examples of abnormal use include, but are not limited to, damage from mishandling, misuse or abuse, damage from exposure to abnormal conditions, damage from improper care and maintenance, or installation of the product in or on any firearm model the product is not specifically advertised to be used with. Warranty coverage begins on the date of purchase and ends five (5) years after date of purchase. This limited warranty extends only to the original registrant and is non-transferable. To file a warranty claim, a warranty repair request must be submitted, and a Return Merchandise Authorization (RMA) number issued by the LaserMax Warranty Department, within five (5) years from date of purchase. Following submission of a warranty claim, LaserMax reserves the right to inspect the product to determine its eligibility for warranty coverage. If deemed eligible, LaserMax will repair or replace the part(s)/product that LaserMax, at its sole discretion, determines to be defective during the warranty period. If deemed ineligible, LaserMax will return the part(s)/product with an explanation of why coverage is not available. LaserMax reserves the right to replace defective part(s)/product with an equivalent substitute product at its sole discretion. Any and all implied warranties, including the implied warranties of merchantability, fitness for a particular purpose, and non-infringement, also begin on the date of purchase and end five (5) years after date of purchase. This limitation does not apply to residents of states that disallow limitations on the length of implied warranties. The preceding process is both the exclusive remedy and LaserMax's exclusive liability for any warranty claim. LaserMax will not, under any circumstances, be liable for any incidental, indirect, consequential, punitive or exemplary damages (even if LaserMax has been notified of the possibility of such damages) resulting from or related to a product, including, without limitation, any loss of profit, opportunity, or damages in excess of the purchase price of the warranted product. This limitation does not apply to residents of states that disallow limitations on incidental or consequential damages.

LaserMax, Inc,
3495 Winton Place, Rochester, NY 14623
☎ 800-527-3703 • www.lasermax.com

For patent information, please visit:
www.lasermax.com/patents
01785-0-50 , 12/15, Rev C