

TROUBLESHOOTING

1. Review installation instructions and install a second time to eliminate human error. Pull slide back and allow it to slam forward two or three times to ensure contact.
2. Check batteries. Is the + side down? Are they clean and free from oil?
3. Is the slide lock/laser switch installed correctly?
4. If there is still a problem, call the LaserMax Gunsight Technical Support and Warranty Department at 1-800-527-3703. Technical assistance is available from 9 am to 4:30 pm EST Monday thru Friday. You can also find video assistance by visiting www.lasermx.com/Learn/Videos.aspx.
5. If the sight has to be returned for repair, call our Warranty Department for a return authorization number BEFORE sending the sight. LaserMax will not be responsible for items returned without authorization. Do not return any parts or accessories not requested by the Warranty Department.

REPLACEMENT PARTS

06371-3-1	battery cap assembly (red laser)
06381-3-1	battery cap assembly (green laser)
06373-3-1	slide lock spring assembly
06350-0-1	slide lock / activation switch
LMS-3X393	3-pack 393 Silver Oxide batteries
06375-0-1	Shock Buff



IF YOU EXPERIENCE AN ISSUE WITH YOUR GUIDE ROD LASER PLEASE DO NOT RETURN IT TO THE STORE.

Contact LaserMax Customer Service:
☎ 800-527-3703



Red Laser
CLASS 3R VISIBLE LASER
Output Power: <5mW
Wavelength: 600-700nm

Green Laser
CLASS 3R VISIBLE LASER
Output Power: <5mW
Wavelength: 510-535nm

REMINDER

Aiming a laser beam at moving vehicles including boats, aircraft, trains, and construction equipment may be illegal. Check current applicable laws and follow them accordingly.

DANGER

Laser radiation is emitted from the front aperture of the laser when the switch is activated.

WARNING

Avoid direct eye exposure to beam. Do not point laser at anything you do not wish to destroy.

NOTICE

The FDA requires the label supplied with your laser be affixed to the outside of the gun near the laser aperture.

LASERMAX LIMITED WARRANTY

LaserMax is pleased to offer a five (5) year limited warranty for this product. To take advantage of this coverage, the product must be registered no later than 90 days after purchase.

This product may be registered by completing a Registration Form which may be found at www.lasermx.com/ support or by contacting the LaserMax Customer Service Department at 1-800-527-3703. The LaserMax Limited Warranty extends specific legal rights to the registrant. Other rights, which vary from state to state, may also apply. This product is warranted to be free from defects in material and workmanship at the time of purchase. This limited warranty does not cover expendable parts (ex: batteries), that have definite and predictable life expectancies. This warranty does not cover products that LaserMax determines have been exposed to abnormal use in any way. Examples of abnormal use include, but are not limited to, damage from mishandling, misuse or abuse, damage from exposure to abnormal conditions, damage from improper care and maintenance, or installation of the product in or on any firearm model the product is not specifically advertised to be used with. Warranty coverage begins on the date of purchase and ends five (5) years after date of purchase. This limited warranty extends only to the original registrant and is non-transferable. To file a warranty claim, a warranty repair request must be submitted, and a Return Merchandise Authorization (RMA) number issued by the LaserMax Warranty Department, within five (5) years from date of purchase. Following submission of a warranty claim, LaserMax reserves the right to inspect the product to determine its eligibility for warranty coverage. If deemed eligible, LaserMax will repair or replace the part(s)/product that LaserMax, at its sole discretion, determines to be defective during the warranty period. If deemed ineligible, LaserMax will return the part(s)/product with an explanation of why coverage is not available. LaserMax reserves the right to replace defective part(s)/product with an equivalent substitute product at its sole discretion. Any and all implied warranties, including the implied warranties of merchantability, fitness for a particular purpose, and non-infringement, also begin on the date of purchase and end five (5) years after date of purchase. This limitation does not apply to residents of states that disallow limitations on the length of implied warranties. The preceding process is both the exclusive remedy and LaserMax's exclusive liability for any warranty claim. LASERMAX WILL NOT, UNDER ANY CIRCUMSTANCES, BE LIABLE FOR ANY INCIDENTAL, INDIRECT, CONSEQUENTIAL, PUNITIVE OR EXEMPLARY DAMAGES (EVEN IF LASERMAX HAS BEEN NOTIFIED OF THE POSSIBILITY OF SUCH DAMAGES) RESULTING FROM OR RELATED TO A PRODUCT, INCLUDING, WITHOUT LIMITATION, ANY LOSS OF PROFIT, OPPORTUNITY, OR DAMAGES IN EXCESS OF THE PURCHASE PRICE OF THE WARRANTED PRODUCT. THIS LIMITATION DOES NOT APPLY TO RESIDENTS OF STATES THAT DISALLOW LIMITATIONS ON INCIDENTAL OR CONSEQUENTIAL DAMAGES.



LaserMax Products
A Velocity Outdoor Company
7629 Routes 5 & 20, Bloomfield, NY 14469
☎ 800-527-3703 • www.lasermx.com

For patent information, please visit:
www.lasermx.com/patents
01785-0-74A

Copyright © 2019 Crosman Corporation. All rights reserved. LaserMax and the LaserMax logo are registered trademarks of Crosman Corporation. All other trademarks are property of their respective owners.

LaserMax

GUIDE ROD LASER™

AS RUGGED AS THE GUN



Operator's Manual

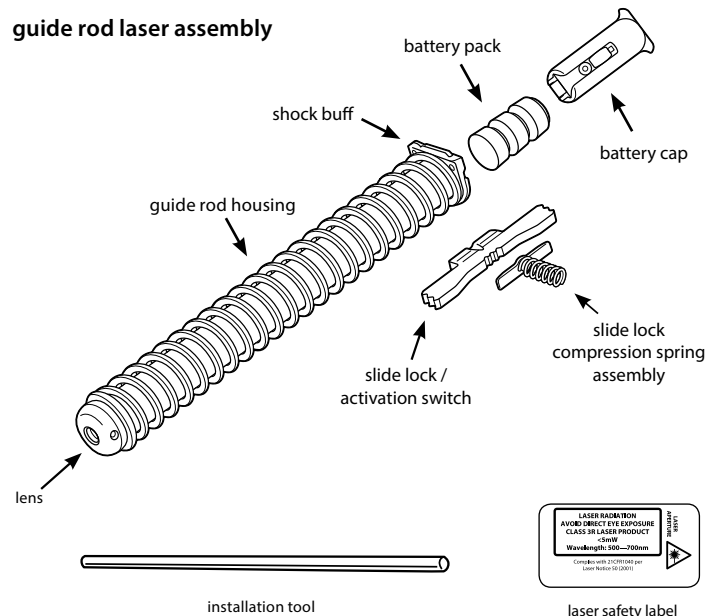
Glock Gen 5 Pistols 17, 34 | 19, 19X, 45

LMS-G5-17
LMS-G5-17G

LMS-G5-19
LMS-G5-19G

PARTS IDENTIFICATION

guide rod laser assembly



See this sight installed at www.youtube.com/LaserMaxInc.

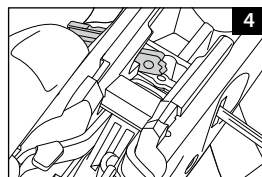
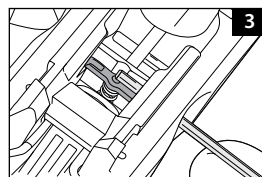
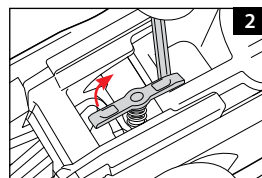
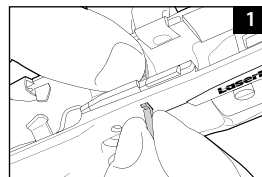
IMPORTANT: Prior to installation, battery change, cleaning or maintenance, follow the firearm manufacturer's instructions to ensure that the firearm is unloaded.

INSTALLATION

Warning: Both Glock and LaserMax guide rod assemblies contain springs under pressure. Safety glasses are recommended during all steps of assembly and disassembly.

! This state-of-the-art laser sighting system is designed for use with specific Glock pistol platforms. Do not attempt installation on any other firearm platforms.

1. Remove pistol slide in accordance with the Glock owner's manual.
2. Remove factory slide lock by applying gentle downward pressure to the Glock slide lock while pushing the slide lock out of its channel in the pistol frame (figure 1). Retain this part for future use.
3. Turn frame over and gently tap on a hard surface until the Glock slide lock compression spring drops out. Retain this part for future use.
4. With detent parallel to pistol frame, place Lasermax slide lock compression spring assembly into the frame with coil spring facing down and detent facing up. Use supplied installation tool to turn detent perpendicular to the frame (figure 2).
5. Insert installation tool into left or right frame opening and compress slide lock compression spring assembly (figure 3).
6. Locate paint marks on slide lock/activation switch. With painted side facing operator (away from muzzle), insert slide lock/activation switch into left or right frame opening while passing over slide lock compression spring assembly (figure 4).
7. Direct slide lock/activation switch through opposing frame opening. When fully inserted, slide lock/activation switch should click into place (figure 5).
8. Place pistol slide on a flat surface, iron sights down, and insert the lens end of guide rod laser assembly into the round guide rod hole in the pistol slide (figure 6).
9. Apply inward pressure on battery cap end of guide rod laser assembly to compress recoil spring.



10. Ensuring that the arrow on battery cap is pointing toward pistol barrel, carefully lower battery cap end of guide rod laser assembly into pistol slide until it rests against the circular cut out in barrel lug as shown (figure 7). Release pressure on the spring. Note: laser may activate at this time.
11. Invert frame and align frame with grooves on slide.
12. Reattach slide to frame.
13. Fully cycle pistol slide several times, permitting it to fall forward quickly under full recoil spring tension (return to battery).
14. Compare laser aiming point to iron sights at 10 yards to verify proper installation.

OPERATION

1. To turn the laser on, press in on the activation switch from either side (figure 8). Return activation switch to center position to turn the laser off.
2. To switch laser aiming point from pulse to steady, cycle activation switch on and off within 1 second, repeating this three (3) times within 1 second between each cycle. Repeat this process to return to previous mode.

BATTERY REPLACEMENT

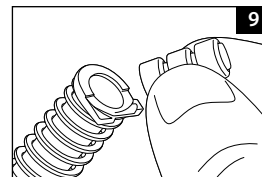
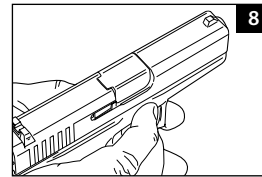
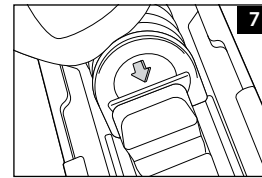
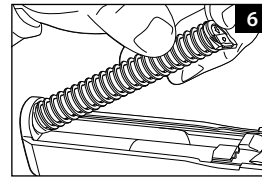
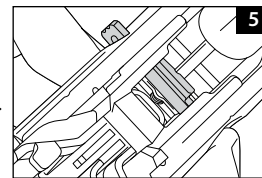
1. Use fingernail to lift tabs of battery cap and pull straight out of guide rod housing. Drop a fresh battery pack into battery compartment with positive (numbered) side down (figure 9).



Tip: During periods of non-use, test the Lasermax laser periodically to ensure adequate battery levels.

Replacement Lasermax battery packs are sleeved and can be purchased at Lasermax.com.

To install battery cap, align tabs of battery cap with slots on the guide rod housing as shown (figure 10). Press down on battery cap until it is flush with end of tube.



CLEANING & MAINTENANCE

After repeated fire, the lens may become clouded with gunpowder residue. For best results, it is recommended that this area be cleaned, along with the firearm, after each use. To clean the lens, follow these steps.

1. Keep firearm pointed in a safe direction.
2. Confirm laser is off.
3. Dampen the end of a cotton swab with isopropyl alcohol.
4. Apply dampened swab to lens and polish in a small circular pattern. Be sure to clean around edges of lens.
5. Wipe with dry swab or cloth.

The Glock firearm should be lubricated exactly as directed in the Glock Owner's Manual. Excess lubricant can interfere with the proper function of both the firearm and the Guide Rod Laser. Similarly, failure to properly clean and lubricate the firearm as directed can interfere with the proper function of both the firearm and the Guide Rod Laser. LaserMax components should never be submerged or flushed with cleaning solvents. Failure to adhere to these guidelines may cause damage and void the factory warranty.

BATTERIES

Replacement battery packs are available from your dealer or direct from us. DO NOT remove the shrink wrap from the LaserMax battery packs. DO NOT use loose batteries.

For longer battery life, avoid getting finger oils on the battery contact surfaces. LaserMax recommends keeping a fresh set of batteries for carry and using older batteries for practice.

