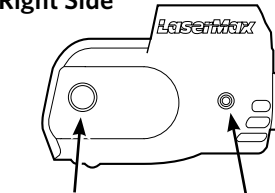
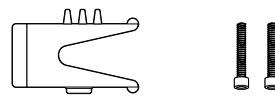


PARTS IDENTIFICATION

Right Side



right activation switch windage port

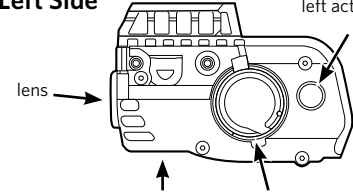


rail vise™ positioner mounting screws



laser safety label

Left Side



lens left activation switch elevation port battery cavity



housing clamp



battery cover



2-1/3N batteries



.05" adjustment tool

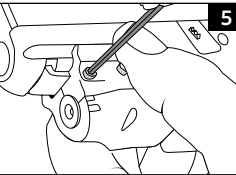
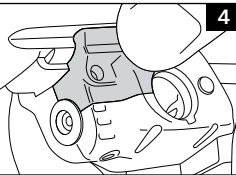
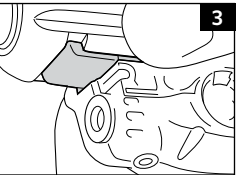
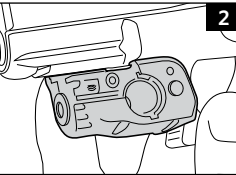
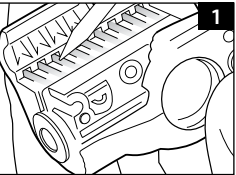


5/64" hex tool

IMPORTANT: Prior to installation, battery change, cleaning or maintenance, follow the firearm operator's manual to ensure that the firearm is unloaded.

INSTALLATION

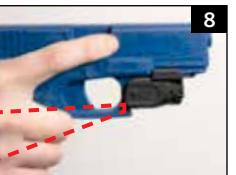
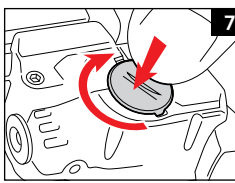
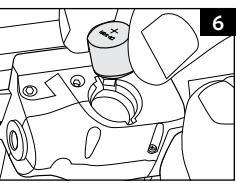
1. Identify slotted channels for rail vise positioner in housing (figure 1).
2. Position the housing against the rail of the firearm as shown (figure 2). Hold in place on rail and slide back toward the trigger guard to insure proper function.
3. Slide the curved front end of rail vise positioner into the picatinny rail slot of the pistol and position the three teeth into the corresponding slotted channels in housing (figure 3)
4. Mate housing clamp with housing and press the two together to close the gap (figure 4).
5. While holding the completed assembly in place on the pistol rail, insert two (2) mounting screws into the holes in the left housing clamp (figure 5).
6. Partially tighten mounting screws with the 5/64" hex tool provided. Ensure that the laser is attached to the rail as close as possible to the trigger guard before completely tightening



7. Install two (2) 1/3N batteries into the housing with positive side facing out (figure 6). Install battery cover by aligning the tabs into the matching slots in the housing, push down on battery cover, rotate clockwise and release to lock (figure 7). Use caution and keep firearm pointed in a safe direction, GripSense™ Activation is enabled from the factory, laser may turn on.

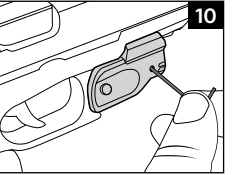
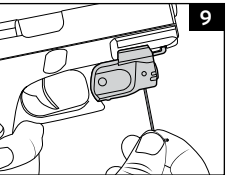
OPERATION

1. With GripSense™ Activation enabled, once the hand is within the detection zone (figure 8), the laser will turn on. When the hand is removed from the detection zone, the laser will turn off. The laser can also be turned off by pressing and releasing either push button activation switch. To turn the laser back on, press and release either activation switch or remove hand from grip and re-grip firearm.
2. GripSense Activation sensitivity is user adjustable. It is set at HIGH sensitivity at the factory. HIGH sensitivity provides the most robust GripSense activation regardless of how the firearm is gripped and type of firearm used. A HIGH setting may also increase the chance of unintentional activation. Changing the setting allows the user to fine tune the sensitivity to their particular firearm and grip if they are not satisfied with the factory setting. To change sensitivity setting, start with unit off then press and hold both activation switches for 8 seconds. After 8 seconds, the laser will start blinking. Release both activation switches.



ALIGNING THE LASER

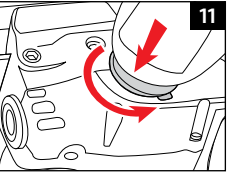
1. Verify proper alignment by comparing laser aiming point to iron sights at a distance of 10 yards for initial alignment. The laser dot should be slightly above the iron sights.
2. To make adjustments, insert adjustment tool into one of the two alignment ports (figures 9 & 10) and slowly rotate the tool while comparing laser position on target to fixed sights. **Important:** Do not rotate adjustment tool more than one full turn in either direction from the factory position. This may cause damage to the laser and void the warranty. A one quarter turn will result in a movement of approximately 3 inches at 10 yards.
3. Windage adjustment: with the muzzle pointing forward and adjustment tool inserted into the windage port, a clockwise turn will shift the laser aiming point to the right and a counterclockwise turn will shift the laser beam to the left (figure 9).



4. Elevation adjustment: with the muzzle pointing forward and adjustment tool inserted into the elevation port, a clockwise turn as viewed from above will shift the laser beam up and a counterclockwise turn will shift the laser beam down (figure 10).
5. Verify zero by shooting target and making additional adjustments as needed. Note: a slight shift in alignment may be observed after firing the first time. Recheck alignment after break in and readjust as necessary.

BATTERY REPLACEMENT

- TIP:** During periods of non-use, test the LaserMax laser periodically to ensure adequate battery levels.
1. Press down on battery cover then rotate counterclockwise to remove. (figure 11).
 2. Carefully remove the expended 1/3N batteries.
 3. Insert a fresh set of 1/3N batteries (positive end facing outward) and replace battery cover (figure 7).



CLEANING

- After repeated fire, the lens may become clouded with gunpowder residue. For best results, it is recommended that this area be cleaned along with the firearm after each use. To clean the lens, follow these steps:
1. Keep firearm pointed in a safe direction.
 2. Confirm laser is off.
 3. Dampen the end of a cotton swab with isopropyl alcohol.
 4. Apply dampened swab to lens and polish in a small circular pattern. Be sure to clean around the edges of the lens.

WARNING

Firearm should be cleaned and lubricated exactly as directed in the Owner's Manual. Excess lubricant can interfere with the proper function of both the firearm and the Lightning Laser. LaserMax components should never be submerged or flushed with cleaning solvents. Failure to adhere to these guidelines may cause damage and void the factory warranty.

REPLACEMENT PARTS

06049-0-1	rail vise positioner
06363-0-1	housing clamp
06297-0-1	5/64" hex key
06361-0-1	mounting screws
04816-A-1	0.05" adjustment tool
06366-0-1	battery door cover
LMS-2x13N	2-pack replacement batteries

LASERMAX LIMITED WARRANTY

LaserMax is pleased to offer a five (5) year limited warranty for this product. To take advantage of this coverage, the product must be registered no later than 90 days after purchase.

This product may be registered by completing a Registration Form which may be found at www.lasermax.com/support or by contacting the LaserMax Customer Service Department at 1-800-527-3703. The LaserMax Limited Warranty extends specific legal rights to the registrant. Other rights, which vary from state to state, may also apply. This product is warranted to be free from defects in material and workmanship at the time of purchase. This limited warranty does not cover expendable parts (ex: batteries), that have definite and predictable life expectancies. This warranty does not cover products that LaserMax determines have been exposed to abnormal use in any way. Examples of abnormal use include, but are not limited to, damage from mishandling, misuse or abuse, damage from exposure to abnormal conditions, damage from improper care and maintenance, or installation of the product in or on any firearm model the product is not specifically advertised to be used with. Warranty coverage begins on the date of purchase and ends five (5) years after date of purchase. This limited warranty extends only to the original registrant and is non-transferable. To file a warranty claim, a warranty repair request must be submitted, and a Return Merchandise Authorization (RMA) number issued by the LaserMax Warranty Department, within five (5) years from date of purchase. Following submission of a warranty claim, LaserMax reserves the right to inspect the product to determine its eligibility for warranty coverage. If deemed eligible, LaserMax will repair or replace the part(s)/product that LaserMax, at its sole discretion, determines to be defective during the warranty period. If deemed ineligible, LaserMax will return the part(s)/product with an explanation of why coverage is not available. LaserMax reserves the right to replace defective part(s)/product with an equivalent substitute product at its sole discretion. Any and all implied warranties, including the implied warranties of merchantability, fitness for a particular purpose, and non-infringement, also begin on the date of purchase and end five (5) years after date of purchase. This limitation does not apply to residents of states that disallow limitations on the length of implied warranties. The preceding process is both the exclusive remedy and LaserMax's exclusive liability for any warranty claim. LASERMAX WILL NOT, UNDER ANY CIRCUMSTANCES, BE LIABLE FOR ANY INCIDENTAL, INDIRECT, CONSEQUENTIAL, PUNITIVE OR EXEMPLARY DAMAGES (EVEN IF LASERMAX HAS BEEN NOTIFIED OF THE POSSIBILITY OF SUCH DAMAGES) RESULTING FROM OR RELATED TO A PRODUCT, INCLUDING, WITHOUT LIMITATION, ANY LOSS OF PROFIT, OPPORTUNITY, OR DAMAGES IN EXCESS OF THE PURCHASE PRICE OF THE WARRANTIED PRODUCT. THIS LIMITATION DOES NOT APPLY TO RESIDENTS OF STATES THAT DISALLOW LIMITATIONS ON INCIDENTAL OR CONSEQUENTIAL DAMAGES.

LaserMax Products
A Velocity Outdoor Company
7629 Routes 5 & 20, Bloomfield, NY 14469
☎ 800-527-3703 • www.lasermax.com

For patent information, please visit:
www.lasermax.com/patents
01785-0-73

5
5 Year
Warranty



IF YOU EXPERIENCE AN ISSUE WITH YOUR LASER PLEASE DO NOT RETURN IT TO THE STORE.

Contact LaserMax Customer Service: ☎ 800-527-3703



GS-LTN-R
Red Laser
CLASS 3R VISIBLE LASER
Output Power: <5mW
Wavelength: 600-700nm
GS-LTN-G
Green Laser
CLASS 3R VISIBLE LASER
Output Power: <5mW
Wavelength: 510-535nm

REMINDER

Aiming a laser beam at moving vehicles including boats, aircraft, trains, and construction equipment may be illegal. Check current applicable laws and follow them accordingly.

DANGER

Laser radiation is emitted from the front aperture of the laser when the switch is activated.

WARNING

Avoid direct eye exposure to beam. Do not point laser at anything you do not wish to destroy.

NOTICE:

The FDA requires the label supplied with your laser be affixed to the outside of the gun near the laser aperture.

Copyright © 2019 Crosman Corporation. All rights reserved. LaserMax, LaserMax logo, GripSense and Rail Vise are trademarks of Crosman Corporation.

LaserMax LIGHTNING

LASER SIGHT



OPERATOR'S MANUAL

Rail Mounted
GS-LTN-R • GS-LTN-G