

# Guard Dog Security 100% Satisfaction Policy

Guidance / Satisfaction / Trust  **Guaranteed**

Bought a Guard Dog Security product and wish you purchased another color instead? Another size? Different function and features? Worry not. Guard Dog's 100% Satisfaction Policy ensures that you will be satisfied with your ultimate self defense product choice, or we will exchange it until you are!

Guard Dog Security believes that you deserve to make the decision you're happy with when it comes to personal security and we would love to work with you during this process. Whether you would like professional product advice, guidance or help, contact us and we will help you.

Did you receive a gift and want to explore our other products? Contact us and we'll swap out your item to your complete satisfaction.

**Guard Dog Security is committed to your security and satisfaction; it is our top priority**

 **100% SATISFACTION POLICY**

**YOUR BEST FRIEND IN SECURITY**

Contact us Mon - Fri, 10am - 6pm EST  
Email: [info@guarddog-security.com](mailto:info@guarddog-security.com)



## WARNING

- Never place this device face down when light is on. Doing so could burn/ignite surfaces and causes serious property damage. Always turn tactical light off when not in use.
- To prevent serious damage to eyesight, never look into tactical light when light is on.
- Do not touch lens of tactical light when light is on or if it was recently on. The lens will be hot and could cause serious burns.
- Do not allow children to handle or operate this device.
- Do not use this product for other than its intended use.
- Do not charge or operate in close proximity of combustible or flammable materials.
- Do not attempt to charge or operate this device if the cord, plug, battery, bulb, or any part of the tactical light is damaged or corroded.
- Do not meddle with the bulb, probes, or attempt to touch bulb.
- Avoid direct contact with the head with this device.
- Do not use an outdoor AC outlet to recharge battery.
- Only use charging devices that are provided with this device or its authorized replacements.
- Do not disassemble or attempt to alter this device.
- Do not disassemble or tamper with the battery.
- Do not submerge the device, any internal components or any other parts/accessories that come with the device in water or allow moisture to enter.
- Do not dispose of battery. Contact your local county solid waste authority for proper recycling or disposal information.
- Do not use the device on metal surfaces, as it may cause electrical voltage to travel on the surface.
- Keep away from extreme temperatures and weather conditions.

**Note:** Failure to comply with the above will void the Guard Dog Lifetime Warranty.

*It is recommended to keep this device equipped at all times.  
It is the buyer's responsibility to check local and state laws for the use of the device.*



**YOUR BEST FRIEND IN SECURITY**

Guard Dog Security is a registered trademark of Skyline USA, Incorporated  
4180 St. Johns Parkway, Sanford, FL 32771 USA



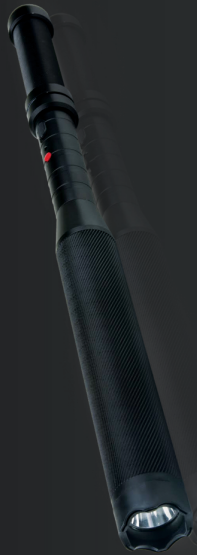
**YOUR BEST FRIEND IN SECURITY**

# TITAN

▶ **BATON + TACTICAL FLASHLIGHT + STUN GUN**

**7500K CONCEALED STUN GUN  
260 LUMEN TACTICAL FLASHLIGHT**

**CONGRATULATIONS  
ON YOUR NEW PURCHASE**



260 LUMEN



7500K STUN GUN



EMERGENCY GLASS BREAKER



AI TYPE III ALUMINUM ALLOY



RECHARGEABLE BATTERY



SAFETY SWITCH

## NUMERICAL REPRESENTATION

- 01 > SAFETY/TAIL SWITCH
- 02 > SLIDER SWITCH
  - Bottom: OFF
  - Middle: Tactical Flashlight Mode
  - Top: Stun Gun Activator Mode
- 03 > STUN GUN ACTIVATOR
- 04 > ACTIVATOR INDICATOR
- 05 > TAIL CAP
- 06 > CONCEALED STUN PRONGS
- 07 > TACTICAL FLASHLIGHT
- 08 > CHARGING PORT
- 09 > WALL CHARGER (110V)
  - LED Charging Indicator
- 10 > CAR CHARGER
  - LED Charging Indicator
- 11 > RECHARGEABLE BATTERY

## DEVICE SPECIFICATIONS

- > LIGHT FUNCTIONS
  - Ultra Bright: 260 Lumens
  - Low: 90 Lumens
  - Strobe: 260 Lumens
- > DIMENSIONS
  - Height: 18.75"
  - Diameter: 1.45"
- > PRODUCT WEIGHT
  - 11.8 1.2oz

## How To Use Device

### THIS DEVICE MUST BE CHARGED 8-10 HOURS BEFORE INITIAL USE.

#### Charging your device.

To charge, move the Slider Switch to the off/bottom position. Unscrew the Tail Cap and insert the Rechargeable Battery with the positive (+) side going in first, if the battery is not already in the device. Tightly screw on the Tail Cap once the Rechargeable Battery has been inserted.

**Note:** Tail Cap must be firmly screwed on to the device. A loosely screwed Tail Cap can alter the light quality and output, the stun output and the quality of charging.

**WARNING:** Do not allow water or moisture to enter inside the product, on or in the charging components and/or inside the charging outlets. For additional warnings, see back.

Depending on the chosen charging method, insert either the Car Charger or the Wall Charger into the Titan Charging Input. If using the Car Charger, input the other end into 12V car lighter power socket. Ensure that the vehicle is equipped/powered for such usage. If using the Wall Charger, input the other into a 110V electrical socket. Once successfully inserted, the LED Charging Indicator (either 7c or 8c) will turn red to indicate successfully charging. The light will turn green to indicate a full charge, once completed. Charge time varies by amount of battery drainage. Typical charge time is 4 to 8 hours.

**Note:** Avoid allowing the battery to completely drain before recharging, as this could decrease

the life expectancy of the rechargeable battery and device. Decreasing light power, varying light outputs and slow stunning power will indicate a low battery. A fully charged device will run on constant flashlight mode for up to 5 hours. A device which has used minimal flashlight mode can hold a stun gun charge for up to 2-4 months. Run time will vary by usage of stun gun/flashlight combination, frequency of use and other factors. It is recommended to charge the device regularly.

**WARNING:** Do not attempt to use or power the device while charging, as this could cause damage to the electrical outlet(s) and possibly result in fire. For additional warnings, see back.

#### To operate Tactical Flashlight functions:

Press/depress the Safety/Tail Switch into the ON position. Moving the Slider Switch from the bottom to the middle position will change the light functions from high, low to emergency strobe. Move the Slider Switch from the bottom position to the middle position for the first light function. Move the Slider Switch back to the bottom/off position and again to the middle position for the second light function. Repeat for the third light function.

**Note:** Do not move Slider Switch to the top position to turn the Tactical Flashlight off. Ensure the Slider Switch is in the bottom position when not in use.

#### To operate the Concealed Stun Prongs:

Press/depress the Safety/Tail Switch into the ON position. Move the Slider Switch to the top position, activating the Activator Indicator, and firmly press and hold the Stun Gun Activator button located directly above the Activator Indicator. Releasing the Stun Gun Activator button will stop the stun gun.

**Note:** To safely turn the device off, press the Safety/Tail Switch OFF when not in use.

**Note:** A one-sided spark when test firing is normal. However, both sides will spark upon contact. To test this, carefully place a sheet of paper across both probes and test fire. Shock effect will vary. A quick touch will startle the assailant; accompanied with pain, discomfort, muscular contraction and shock. Contact on an assailant for further periods can cause the assailant to fall, lose balance and/or muscle control, cause mental confusion, muscle spasms and/or disorientation. Results may vary depending on the area on which the assailant is stunned, physical attributes of the assailant and other factors. This device does not cause permanent damage under normal circumstances. The user will not suffer a chargeback when using this device on an assailant.

**WARNING:** Do not shock an assailant on the head, heart or on an area of any other major organs.

#### GUARD DOG LIFETIME WARRANTY

This Guard Dog product has a lifetime warranty from the date of original purchase. Manufacturer warrants the product to be free from defective material or factory workmanship and agrees to repair or replace such products within normal use. Removal of battery pack, placement in moist/wet areas/surfaces, placement in extreme heat or cold, unintended use, mishandling, normal wear and tear, product life cycle use and/or self-inflicted damage to the device will void the warranty. See additional instructions, warnings and notices for further operating details. Owner must provide receipt of purchase/ownership from an authorized Guard Dog Security retailer.

