

DOUBLE ACTION
AUTOLOADING PISTOLS

SAFETY WARNING AND INSTRUCTION HANDBOOK



READ CAREFULLY BEFORE USING THIS FIREARM

SOME BASIC RULES OF FIREARMS SAFETY

Always handle every firearms as if it were loaded.

Always be sure that the barrel is clear of any obstruction.

Always store your guns and ammunition separately, locked if possible and out of the reach of children and other inexperienced persons.

Always be sure of your backstop, what lies beyond and the safety of bystanders before shoot.

Always wear adequate shooting glasses and ear protection when shooting your firearm.

Always use clean, dry factory ammunition of the proper size and caliber for your firearm

Never lend your firearm to anyone who is not thoroughly familiar with its operation of the basic rules of firearm safety. Be certain that everyone using your firearm had read and understood this instruction and Safety Manual.

Never point your firearm at anything you do not intend to shoot!

Never carry this pistol with cartridge in the chamber without the safety lever "ON"!

The best safety device is your own good sense. Use it.

HOW TO USE

How to remove the magazine: Press the left button.

Loading the magazine: Push down the feeder platform, or round already in the magazine with the rim and carefully shover the new round under the magazine lips.

To empty the magazine, push each cartdrige foward until it is no longer held by the magazine lips. Do not use force.

To chamber the first round: Insert the full magazine into the pistol. Grip the weapon and pull the slide fully back with the free hand by the ribbed end, then release the slide.

Single action shooting: Safety catch Off Cock the hammer by pulling it back with the thumb. Warning! A slight pressure on the trigger will cause the shot.

Double action shooting: Safety catch Off and pull the trigger fully back. Every following shot will automatically cock the hammer.

Safety on when the hammer is cocked: Push the safety down ward with the thumb. The hammer drops foward but it will not touch the hammer.

Firestorm warning: All owners and users of Firestorm pistols are reminded to use the decocking lever to decock their pistols. The only positive way to safely lower the hammer is by use of the decocking lever.



Fig.1

Warning: Hammer should never be lowered manually by pulling the trigger. Manual lowering the hammer is dangerous and could cause serious injury or death.

After firing dismanteling: Grip the pistol with the shooting hand (illustration 1). With the other hand grasp the grooved surfaces at the rear of the slide and pull the slide fully to the rear, then press the disassembly piece 21 and the slide will go back again until to a second top (illustration). Raise the slide and push (illustration 3).



Fig.2

Care and cleaning: After dismanteling, clean the barrel and chamber throughly with bore solvent to clean all exposed internal surfaces. Pay particular attention to the bolt face (where the firing pin protrudes) and under the extractor hook. Sparingly lubricate moving parts with a light high quality gun oil. Wipe off any excess oil.

Reassembly: Introduce the spring around the barrel. Grip the pistol with the shooting hand (illustration 2). Keep disassembly piece down engage the slide in the guides and release it.



Fig.3

Safety Key: Your pistol is provided with an internal locking system operated by a special key. It is located above the trigger in the left side of the frame. In the unlocked position (F) the pistol is ready to fire. In the locked position (S) you can not cock the hammer, fire in double action, load a cartridge in the chamber or disassemble the pistol. Please make sure that your pistol is in the lock position (S) when not in use. Always store and keep your pistol unloaded and in a safe place away from minors. Replacement keys can be ordered by calling customer service at 1-732-493-0333.



FireStorm

TECNICAL DATA

MODEL



Caliber	.380 ACP
Operation	Semiautomatic
Overall length	6.61 inches
Height	4.72 inches
Width	1.30 inches
Barrel length	3.5 inches
Weight	19.75 ounces
Rear sight	Dovetailed
Front sight	Blade integral with slide
magazine capacity	7 cartridges
Safeties	Firing pin / magazine
Grips	Rubber
Finish	Blue / Due Tone

After firing the last cartridge the slide remains open.

TECNICAL DATA

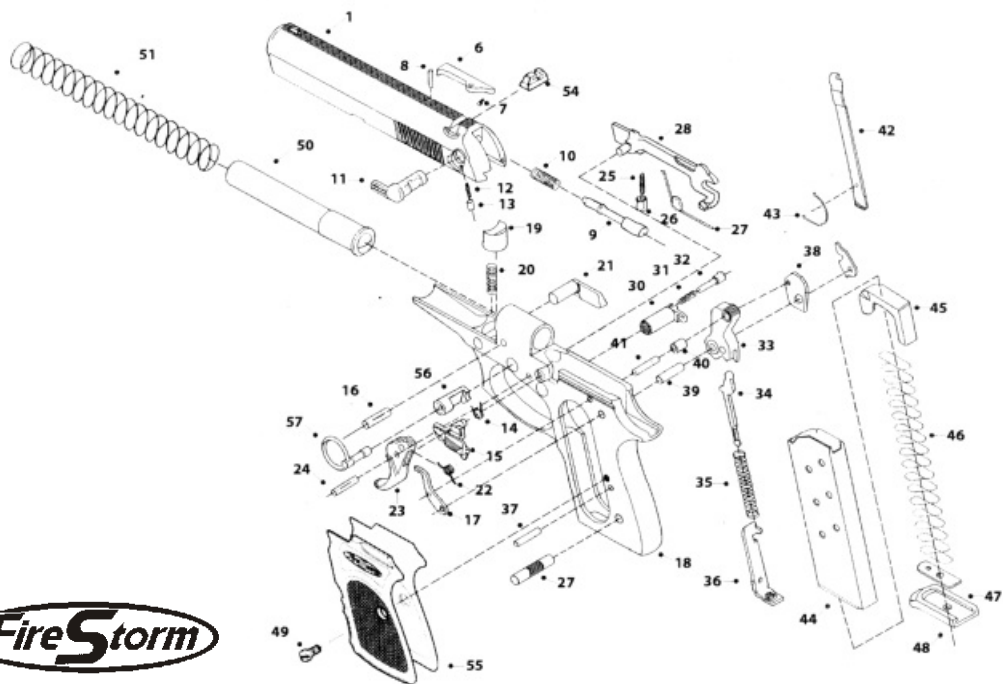
MODEL



Caliber	.22 L.R.
Operation	Semiautomatic
Overall length	6.61 inches
Height	4.72 inches
Width	1.30 inches
Barrel length	3.5 inches
Weight	18.87 ounces
Rear sight	Notched bar dovetailed
Front sight	Blade integral with slide
magazine capacity	10 cartridges
Safeties	Firing pin / magazine
Grips	Rubber
Finish	Blue / Due Tone

After firing the last cartridge the slide remains open.

FireStorm



TECNICAL DATA

MODEL



1 Slide _____
6 Extractor _____
7 Extractor spring _____
8 Extractor pin _____
9 Firing pin _____
10 Firing pin spring _____
11 Safety _____
12 Safety spring _____
13 Safety stop _____
14 Slide Catch Spring _____
15 Slide Catch _____
16 Barrel Pin _____
17 Ejector _____
18 Frame _____
19 Slide stop _____
20 Slide stop spring _____
21 Disassembly bar _____

22 Trigger spring _____
23 Trigger _____
24 Trigger pin _____
25 Firing pin stop spring _____
26 Firing pin stop _____
27 Grip pin _____
28 Disconnecter _____
29 Disconnecter spring _____
30 Magazine catch _____
31 Magazine catch spring _____
32 Magazine catch pin _____
33 Hammer _____
34 Hammer spring guide _____
35 Hammer spring _____
36 Cocking piece _____
37 Cocking piece pin _____
38 Hammer release _____

39 Hammer pin _____
40 Hammer release bush _____
41 hammer release pin _____
42 Magazine safety _____
43 Magazine safety spring _____
44 Magazine tube _____
45 Feeder platform _____
46 Feeder platform spring _____
47 Magazine bottom holder _____
48 Magazine bottom _____
49 Grip screw _____
50 Barrel _____
51 Recoil spring _____
54 Rear sighth _____
55 Grip _____
56 Internal locking system _____
57 Safety key _____

SAFETY WARNING

Ear & eye protection: Use ear plugs or " earmuff " type protectors to guard against permanent, cumulative hearing loss that can result from repeated exposure to shooting noise.

Shooting glasses will protect against powder gas, carbon residue, lubricant, metal particles, or other debris that is occasionally emitted from firearms in normal use.

Make sur that anyone near you is also wearing ear and eye protection.

The safety mechanism: 1. your gun has an effective, well designed safety mechanism, but no safety mechanism can take the place of your own good sense and cautions gun handing. No safety can guard against horseplay, carelessness, or improper usage, and the safety may be rended ineffective by breakage or malfunction due to abuse, incorrect assembly, or unauthorized adjustment.

2. Never allow a gun to point at any part of your body, or at any other person. If you obey this rule, even an accidental discharge will not cause injury.

3. The safety mechanism should remain on until the gun is pointed at the target, and you are ready to shoot.

4. When turning the safety on or off, point the muzzle in a safe direction, and keep your finger off the trigger.

5. Be sure to move the safety fully into position, or it will not be effective.

Some guns have red warning dot beside the safety, which should be completely covered when the safety is on.

6. Do not carry a gun with a cartridge in the chamber without the safety being on. (Double action

revolvers and some double action pistols have automatic internal safety mechanisms rather than manual safeties)

Loading: 1. Be sure that muzzle is pointing in a safe direction when loading.

2. Do not load or unload a gun inside a confined space such as a vehicle or a building (other than a well constructed shooting range). In an closed area, there is often no completely safe direction to point the gun and if accidentally fired, there is a great danger of personal injury and property damage.

3. Clean all oil and grease from the chamber before loading and be certain that nothing is obstructing the barrel. Obstructions in the barrel can cause the barrel to budge or burst, or otherwise damage the gun and injure the shooter and bystanders.

Firing: 1. When cocking a gun, keep your finger off the trigger, and the muzzle pointed in a safe direction.

2. Never carry a cocked gun around, or leave a cocked gun unattended! A cocked gun will fire with only a slight pressure on the trigger. If you fall, or drop the gun, or someone strikes or disturbs it, it could easily fire accidentally.

3. When firing a semi-automatic gun, keep your fingers, hand, face, and all other parts of your body away from the ejection port, or any place in the path of the movement of the slide (or bolt) will not injure the shooter if the gun is held and fired at arm's length, and rifle or shotgun from the shoulder)

Be sure no one is standing where they may be struck by an empty cartridge case.

Ejected cases are hot, and may cause burns or cuts, or eye injuries (if no eye protection is worn). Be sure there is a clear, safe unobstructed path for fire cases to be ejected, as they will not bounce off a hard object and hit someone.

5. If your gun develops a mechanical malfunction while shooting, or emit powder gas, or if a cartridge case is bulged or ruptured, or if the sound of firing is not quite right, **DO NOT CONTINUE SHOOTING! STOP IMMEDIATELY AND UNLOAD THE GUN**, and take it and the ammunition to a gunsmith.

6. A loaded cartridge case that becomes jammed in a semi-automatic gun between the slide (or bolt) and the barrel may be removed as follows: Keep the muzzle pointed in a safe direction. First, remove the magazine, and then pull the slide or bolt back and hold it or lock it to the rear. Remove the jammed case by shaking it out, or pick out your fingers.

Unloading: 1. Be sure the muzzle is pointed in a safe direction.

2. After removing the magazine, be sure to clear the chamber.

3. Do not assume that a gun is unloaded until you personally have looked to see.

Transporting and storing your gun: 1. Always keep your gun unloaded while transporting it to and from shooting activities.

2. Store guns and ammunition separately, preferably under lock and key. Keep guns and ammunition out of the reach of children and inexperienced, careless, or unauthorized adults.

Semi-automatic pistols: 1. Carrying a semi-automatic pistol with a cartridge in the chamber greatly increases the chance of an accident. Doing so may only be justified in cases of clear and present danger. When the pistol may have to be fired immediately in self-defense, but this practice is not recommended. It is safest when carrying a loaded pistol to have the chamber empty.

2. If you MUST carry semi-automatic pistol with a cartridge in the chamber, be sure the hammer is in the unlocked position. If your pistol has a hammer lowering lever, use it rather than the trigger to lower the hammer. Also if your pistol has a manual safety, always leave the safety on when carrying the pistol with a cartridge in the chamber, until the gun is armed at the target and you are ready to fire.

Ammunition: 1. Use high-quality, original factory made ammunition in your gun. Never use ammunition that is wet, dirty, corroded, or otherwise damaged. Never oil or lubricate ammunition, or let excess aerosol lubricants, preservatives, or cleaners come into contact with cartridges; this can cause dangerous malfunction. Be sure your ammunition is the proper caliber permanently engraved on the gun. Do not use any other caliber ammunition.

2. Reloading ammunition is a scene, and improperly loaded ammunition can cause severe damage to your gun, and serious injury to both the shooter and other persons. Use ammunition approved by the Sporting Arms and Ammunition Manufacturers Institute, Inc. of the United States (SAAMI)

All warranties are void if you use reloaded, "remanufactured", handloaded, or other non-standard ammunition.

3. Excessive pressure inside the chamber or the barrel can cause severe damage to the gun and serious injury to the shooter. This can be caused by obstructions in the barrel, propellant powder overloads, or the use of incorrect, improperly assembled, dirty, corroded, or damaged cartridges.

4. Stop shooting IMMEDIATELY and check the barrel for obstructions if:

- you have difficulty chambering a cartridge or feel unusual resistance
- a cartridge does not go off (misfire)
- a fired cartridge case is not extracted
- you see unburned grains of powder in the mechanism
- a shot sounds abnormal or weak.

These conditions may be caused by a bullet lodged part way down the barrel. Do not fire another bullet into the obstructed barrel, as this may damage the gun and cause serious injury to both the shooter and bystanders.

5. Bullets lodged in the barrel can be caused by:

- the cartridge being improperly loaded without propellant powder, or the powder failing to ignite (ignition of the cartridge primer without powder will push the bullet out of the cartridge case, but usually is not sufficient to expel the bullet from the gun barrel).
- a bullet that is not sealed tightly in its cartridge case. If a cartridge with a loose bullet is removed from the chamber without being fired, the bullet may remain in the barrel.

Putting another cartridge in the chamber can push the first bullet further into the barrel.

6. If you suspect that the bullet is obstructing the barrel, unload the gun immediately, and look through the bore. Do not merely look in the chamber, as a bullet may be loaded further down the barrel where it cannot be seen easily. IF A BULLET IS OBSTRUCTING THE BARREL, DO NOT TRY TO SHOOT IT OUT WITH ANOTHER CARTRIDGE, A BLANK CARTRIDGE, OR A CARTRIDGE WITH THE BULLET REMOVED. THIS MAY CAUSE EXCESSIVE PRESSURE AND DAMAGE THE GUN, AND CAUSE A SERIOUS INJURY TO THE SHOOTER AND OTHERS.

Dislodge the bullet by tapping it with a cleaning rod, then clean any unburned powder grains from the chamber, mechanism, and bore before firing again. If tapping with a cleaning rod does not dislodge the bullet, it is necessary to have a gunsmith remove it.

7. Dirty, corroded, oily, damaged, or deformed cartridges may not be chambered completely, and the cartridge case may burst when fired.

8. Wipe oil preservative from the chamber before beginning to shoot, and do not oil cartridges. Oil interferes with necessary friction between the cartridge case and the chamber wall. This causes stress similar to excessive pressure.

9. Do not use too much lubricant on the moving parts of your gun. Do not spray aerosol gun care products where they may come in contact with ammunition, and do not spray them excessively. Lubricant, especially aerosol sprays, can penetrate cartridge primers and cause the ammunition to misfire. Some lubricants can get inside the cartridge cases and prevent the powder from igniting. If only the primer ignites, the bullet may become lodged in the barrel.

Gun care: 1. When your gun is delivered it is factory packaged, and has a light coating of protective grease and oils. Clear packaging grease and oil from the bore and exposed mechanism before loading.

2. Double-check to be sure your gun is unloaded before you start to disassemble your gun for cleaning.
3. After cleaning, make sure you have not left a cleaning patch or other obstruction in the bore or the chamber.

Parts: Firestorm distributor has a complete supply of replacement parts. If your gun needs service, we recommend that you return it to Firestorm for repair. There are many qualified gunsmiths, but naturally the work of any particular gunsmith, other than those in our Service Department, is completely beyond our control. An authorized adjustment of parts replacement can void the warranty on your gun.

It is your responsibility to be sure that parts ordered from Firestorm are the correct type, and that they fit properly and are installed by a qualified person. THE USE IMPROPERLY FITTING PARTS OR IMPROPER ADJUSTMENT MAY CAUSE DANGEROUS MALFUNCTIONS, MAY DAMAGE THE GUN, AND MAY INJURE THE SHOOTER OR OTHER PERSONS. Therefore, the purchaser and/or installer of parts must take full responsibility for the gun's function and correct adjustment when installation or adjustments have been made or tried.

Service policy: Your gun was carefully inspected and test-fired before shipping to insure that it met our specifications and standards. If your gun needs adjustment, refinishing or repair, we highly recommend that you obtain factory service from Firestorm.

If you have any question about your gun's performance, write to our service Department, and describe all the conditions and circumstances involved. If our Service Department feels that your

gun needs factory service, they will let you know, and will give you instructions for the best handling of your shipment.

Firestorm distributor will inspect your gun thoroughly and evaluate the problem or problems you mentioned in your letter. If the repair work needed is not covered by the warranty (copy enclosed), we will send you a quotation of the actual cost of repairs, not an estimate. You must authorize all repairs, and no repairs will be made without your express approval.

Returning gun for service: 1. Federally licensed dealers may ship handguns through the U.S. Mail. The Post Office confiscates handguns mailed by private individuals.

2. Under Federal law, you may return rifles and service by U.S. Mail, or other firearms via common carriers such as United Parcel Service (UPS). State and local gun laws vary greatly. Consult your local prosecuting attorney about any laws in your area that may restrict shipping or receiving firearms.

Considering these facts, we strongly recommend that you send guns to our distributor for repair through a Federally licensed dealer.

3. Ship all guns prepaid. WE DON'T ACCEPT COLLECT SHIPMENTS.

4. The addresses for guns returned for repairs are:

WALKER ARMS Co. - 499 COUNTY ROAD #820 - SELMA, NJ 36701 - Tel. 334-872-6231

BOLSA GUNSMITHING - 7404 BOLSA AVENUE - WESTMINSTER, CA 92683 - Tel. 714-894-9100

AHLMAN'S - 9525 W. 230th STREET - MORRISTOWN, MN 55052 - Tel. 507-685-4243 or 4244

5. With your gun, enclose a letter stating the serial number, caliber and barrel length of the gun, and what work is needed or what problem you experienced with it. Be specific; do not merely say "defective" or "repairs needed". Also enclose copies of any previous letters dealing with the repairs. There will be a minimum labor charge for repair work not covered by warranty.
6. YOUR GUN MUST BE SHIPPED UNLOADED. Before shipping, doublecheck the chamber to be sure. Firestorm distributor is required by law to notify Federal authorities if guns are sent to us loaded.
7. When shipping guns to us, do not include custom grips or stocks, belts, slings, holsters, telescopic sight, or other accessories.

Liability: REVOLVERS AND PISTOLS ARE CLASSIFIED AS FIREARMS OR DANGEROUS WEAPONS, and Firestorm and their Distributors sell them with the specific understanding that we are not responsible in any manner whatsoever for their safe handling or resale under local laws and regulations.

Firestorm and their Distributors are not responsible in any manner whatsoever for malfunctioning of the firearm, physical injury, or property damage that results in whole or in part from (1) intentional or negligent discharge (2) improper or careless handling, (3) unauthorized modifications (4) defective, improper, reloaded, or hand-loaded ammunition, (5) neglect, (6) corrosion or (7) other circumstances or influences beyond our direct and immediate control.

This limitation is applicable regardless of whether liability is asserted on the basis of negligence contract, or strict liability (including any failure to warn).

Firestorm and their Distributors are not liable under any circumstances for incidental or consequential damages, such as commercial loss, loss for use of property, and loss of profits or earnings.

IMPORTANT: KEEP THIS MANUAL WITH YOUR FIREARM!

MANUAL MUST BE TRANSFERRED WITH CHANGE OF OWNERSHIP.

SERIAL.....

OWNER.....PURCHASE DATE:.....

OWNER.....PURCHASE DATE:.....

OWNER.....PURCHASE DATE:.....

**NOTE: THIS INFORMATION CAN BE OF VALUE TO YOU FOR INSURANCE PURPOSES,
PLEASE KEEP THIS FOLDER IN A SECURE PLACE.**



FIRESTORM INC. MAGALLANES 775 - (B1704FLC) RAMOS MEJIA - ARGENTINA
TEL (54-11) 4658-0246 - FAX (54-11) 4656-2093