

PERFECTION.

Because You'll Accept No Less.



Les Baer Custom

www.lesbaer.com

TO SHOOT LIKE A PRO, THE PROFESSIONALS CHOOSE AMERICA'S PRO GUNS FROM LES BAER CUSTOM.



Les Baer Custom salutes these top performing bullseye competitors, all of whom are proud members of the Les Baer Shooting Team and all of whom shoot Les Baer Custom pistols.

Team members and highlights of their achievements include, from left:

Viki Henderson, Oregon

- National Record, Conventional Pistol
- National Champion, NRA Postal Master Class
- Oregon High Woman
- Washington State High Woman

Kim Radford, Florida

- Pistol Distinguished
- National Record, Conventional Pistol
- Member, US International Pistol Team For Five (5) Years

Kimberly Hobart, Ohio

- Twelve (12) National Records
- Eight (8) Time Ladies National Champion
- Ohio State Open Championship

- Pennsylvania Open Championship
- Mayleigh Cup Team

Kathy Chatterton, New Jersey

- Thirty-two (32) National Records
- Pistol Distinguished
- Revolver Distinguished
- President's Hundred

Theresa Meyer, Colorado

- Member of US International Development Team
- Olympic Training Center Resident Athlete
- National Top Ranked Women's Air Pistol
- National Top Ranked Women's Sport Pistol

Visit the team's website at www.lesbaerteam.com.

LES BAER CUSTOM, INC.

1804 Iowa Drive • LeClaire, Iowa 52753
Ph: (563)289-2126 • Fx: (563)289-2132

Email: info@lesbaer.com
<http://www.lesbaer.com>

Office Hours: 8AM-5PM Central Time



Dear Customer:

Sometimes, when we think about how long we've been in business and how successful we've been, we almost have to pinch ourselves. After more than a quarter-century, Les Baer Custom is still acknowledged as the leader in the development of precision built custom firearms that simply outperform any other guns in their product categories. But the fact is, the professionals who depend on firearms to earn their livelihood ... the cops, tactical operators, military special ops guys, firearms trainers and competitors ... those are the same guys who demand the best performance and understand real value. They're the guys who choose firearms built by Les Baer Custom.

How do we continue to earn praise from the world's most discriminating shooters? First, of course, there's our uncompromising quality. If it's not the best, it won't carry our name. It's just that simple.

Then there's our passion for constant innovation, a spirit that has helped us stay ahead of the curve in the continuing evolution of the world's best shooting 1911 pistols and AR rifles. For example:

- Our **Centennial Model 1911** commemorates the 100th anniversary of John Browning's most stellar pistol (see page 16);
- Our **Ultimate Tactical Carry Pistol** is a no-nonsense self defense or duty pistol that's equipped exactly as a tactical carry pistol should be (see page 14);
- We offer a special 1911 that carries the name and endorsement of **Shooting USA**, the groundbreaking television show that has done so much to promote the sport and practical side of shooting (see page 15);
- One of our 1911 duty/defense pistols pays tribute to Les Baer's lifelong love for high performance muscle cars (see the **Boss 1911** on page 10);
- Our newest .308 semi-auto rifle is a truly amazing shooter. It comes with an innovative one-piece upper receiver/rail system for unequalled scope stability and with a mid-length 16" barrel. Keep your eyes open in the rifle section of this catalog and at the shooting range for the new **MONLOLITH .308 Mid-Length SWAT Model**.

Enjoy our 2012 catalog and enjoy our innovative products.

Thank you for your business,

Les Baer Sr.

Member American Handgunner 100 Club

SPECIAL PURPOSE COMPETITION PISTOLS

The Les Baer Custom Shooting Team, holders of forty-five national pistol records.



**LES BAER
CUSTOM, INC.**

*Performance.
It's everything.*





BAER 1911 ULTIMATE MASTER COMBAT PISTOL COMPENSATED

A full house competition model that's built to go racing. guaranteed to shoot 3" groups at fifty yards. Features include:

Baer NM steel frame and NM slide with blued finish • Baer NM barrel • Low-mount LBC adjustable sights with hidden rear leaf • Baer dovetailed front sight • Baer four-port, tapered cone compensator • Double serrated slide • Fitted slide to frame • Lowered and flared ejection port • Baer reverse recoil plug • Full length recoil rod • Two-piece beveled mag well • High checkered front strap @ 30lpi • Checkering underneath trigger guard @ 30lpi • Serrated rear of slide @ 40lpi • Serrated top of slide and compensator • Baer deluxe Commander hammer and sear • Baer extended ambi safety • Tuned extractor • Baer extended ejector • Baer checkered slide stop • Baer beavertail grip safety with pad • Baer tactical mag catch • Baer speed trigger with crisp 3 1/2 lb action job • Polished feed ramp and barrel throat • Baer Premium Checkered Cocobolo grips • Tuned for total reliability • Blued finish • (2) 8-round premium mags

*Calibers: .45 ACP; .38 Super w/supported chamber; other calibers on request
Options: Scoped model available*



BAER 1911 ULTIMATE MASTER 6" MODEL

It's another full house competition model that's built to go racing. It comes equipped with our 6" slide, and it's guaranteed to shoot 3" groups at fifty yards. Features include:

Baer NM steel frame and NM slide with blued finish • Baer NM 6" barrel and stainless steel bushing • Low-mount LBC adjustable sights with hidden rear leaf • Baer dovetailed front sight • Double serrated slide • Fitted slide to frame • Lowered and flared ejection port • Two-piece beveled mag well • High checkered front strap @ 30lpi • Checkering underneath trigger guard @ 30lpi • Serrated rear of slide @ 40lpi • Serrated top of slide • Baer deluxe Commander hammer and sear • Baer extended ambi safety • Tuned extractor • Baer extended ejector • Baer checkered slide stop • Baer beavertail grip safety with pad • Baer tactical mag catch • Baer speed trigger with crisp 3 1/2 lb action job • Polished feed ramp and barrel throat • Baer Premium Checkered Cocobolo grips • Tuned for total reliability • Blued finish • (2) 8-round premium mags

*Calibers: .45 ACP; .38 Super w/supported chamber
Ask about our special 1/2" guarantee!*



**BAER 1911
ULTIMATE MASTER
5" MODEL**

**.45 ACP NOW
AVAILABLE IN
CALIFORNIA**

Another race-ready competition model but it's built with a traditional 5" slide. Like its longer brother it's guaranteed to shoot 3" groups at fifty yards. Features include:

Baer NM steel frame and NM slide with blued finish • Baer NM barrel and stainless steel bushing • Low-mount LBC adjustable sights with hidden rear leaf • Baer dovetailed front sight • Double serrated slide • Fitted slide to frame • Lowered and flared ejection port • Two-piece beveled mag well • High checkered front strap @ 30lpi • Checkering underneath trigger guard @ 30lpi • Serrated rear of slide @ 40lpi • Serrated top of slide • Baer deluxe Commander hammer and sear • Baer extended ambi safety • Tuned extractor • Baer extended ejector • Baer checkered slide stop • Baer beavertail grip safety with pad • Baer tactical mag catch • Baer speed trigger with crisp 3 1/2 lb action job • Polished feed ramp and barrel throat • Baer Premium Checkered Cocobolo grips • Tuned for total reliability • Blued finish • (2) 8-round premium mags

*Calibers: .45 ACP; .38 Super w/supported chamber
Ask about our special 1 1/2" guarantee!*



**BAER 1911
CMP-LEGAL
NATIONAL MATCH
HARDBALL PISTOL**

**.45 ACP NOW
AVAILABLE IN
CALIFORNIA**

For demanding CMP matches, this super accurate match gun is guaranteed to shoot 10-shot, 3 inch groups at 50 yards with ball ammo. The test target is included. Features include:

Baer NM steel frame, NM slide and NM barrel with stainless bushing • Slide fitted to frame • Low mount LBC adjustable sight with hidden rear leaf • Baer Dovetail front sight with undercut post • Baer match trigger with crisp 4 lb pull • Rear serrated slide • Polished feed ramp and throated barrel • High checkered front strap @ 30 lpi • Flat serrated mainspring housing • Beveled mag well • Lowered and flared ejection port • Tuned extractor • Baer extended ejector • Baer checkered slide stop • Baer Premium Checkered Cocobolo grips • Pistol tuned for total reliability • Blued finish • (1) 7-round premium magazine

Calibers: .45 ACP



**BAER 1911 BULLSEYE
WADCUTTER PISTOL WITH BAER
OPTICAL SCOPE MOUNT**

(Scope not included)

A real tack driver for tough centerfire matches. It's designed for wadcutter loads only and it's guaranteed to shoot 2 1/2" groups at 50 yards. Test target included. Features include:

- Baer NM frame, NM slide and NM barrel with stainless bushing
- Slide fitted to frame
- Polished feed ramp and barrel throat
- Double serrated slide
- Baer speed trigger with crisp 3 1/2 lb pull
- Baer deluxe hammer and sear
- Baer beavertail grip safety with pad
- High checkered front strap @ 30 lpi
- Flat checkered mainspring housing @ 20 lpi
- Lowered and flared ejection port
- Tuned extractor
- Baer extended ejector
- Baer checkered slide stop
- Beveled mag well
- Tuned for total reliability
- Blued finish
- Baer Premium Checkered Cocobolo grips
- (1) 7-round premium magazine

Calibers: .45 ACP. Other calibers on request.

Ask about our special 1 1/2" guarantee!

Options: LBC Lo-Mount Adjustable Sights (same as the sights on the Premier II) or a slide mount for optics.





**BAER 1911 P.P.C.
DISTINGUISHED
MATCH**

(Semi-Auto)

**.45 ACP NOW
AVAILABLE IN
CALIFORNIA**

This competition model is designed specifically for the NRA Police Pistol Combat Matches. This 5" model is a perfect fit for "Distinguished" matches. Our P.P.C. Distinguished model includes all the features of our popular Premier II, the flagship of the Les Baer line, but we have substituted a PPC sight. Features include:

Baer NM steel frame, NM slide and NM barrel with stainless bushing • Slide fitted to frame • Double serrated slide • PPC sight • Baer dovetail front sight • Lowered and flared ejection port • Tuned and polished extractor • Baer extended ejector • Baer checkered slide stop • Baer speed trigger with crisp 4 lb pull • Baer deluxe Commander hammer and sear • Baer beavertail grip safety with pad • Flat serrated mainspring housing • Beveled mag well • Polished feed ramp and throated barrel • Baer extended ambi safety • High checkered front strap @ 30 lpi • Pistol tuned for total reliability • Baer Premium Checkered Cocobola grips • Blued finish • (1) 8-round premium magazine

*Caliber: .45 ACP; 9mm w/supported chamber
Ask about our special 1 1/2" guarantee.*



**BAER 1911 P.P.C. OPEN CLASS
AND DISTINGUISHED MATCH**

(Semi-Auto)

Another ultra-dependable competition model designed for NRA Police Pistol Combat matches, but this 6" champion is aimed at the Semi-Auto Open Class and Distinguished Match. It includes all the same features as our time-tested 6" Premier II but we have substituted a PPC sight. Features include:

Baer NM steel frame, NM slide and NM barrel with stainless bushing • Baer 6" slide fitted to frame • Double serrated slide • PPC sight • Baer dovetail front sight • Lowered and flared ejection port • Tuned and polished extractor • Baer extended ejector • Baer checkered slide stop • Baer speed trigger with crisp 4 lb pull • Baer deluxe Commander hammer and sear • Baer beavertail grip safety with pad • Flat serrated mainspring housing • Beveled mag well • Polished feed ramp and throated barrel • Baer extended ambi safety • High checkered front strap @ 30 lpi • Pistol tuned for total reliability • Baer Premium Checkered Cocobola grips • Blued finish • (1) 8-round premium magazine

*Caliber: .45 ACP; .9mm w/supported chamber
Ask about our 1 1/2" guarantee!*

VERSATILE 1911s FOR DUTY,
DEFENSE AND COMPETITION



**LES BAER
CUSTOM, INC.**

*Performance.
It's everything.*





**BAER 1911
PREMIER II®
5" MODEL**

**.45 ACP NOW
AVAILABLE IN
CALIFORNIA**

America's Leading Custom 1911

Les Baer's Premier II® has become the industry standard to which all other factory or custom built 1911s are compared. The 5" long Government Model (pictured above) is the best single stack duty, defense or competition pistol you'll find in America -- the best quality, the best value and the best performance. No wonder so many of them show up at IPSC Limited Class matches. The Premier II® is even guaranteed to shoot 3" groups at 50 yards! We've sold so many in the USA and abroad, the Premier II® has become the flagship of our line. It performs like a million bucks but it costs a whole lot less. Features include:

Baer NM steel frame, NM slide and NM barrel with stainless bushing • Slide fitted to frame • Double serrated slide • Low mount LCB adjustable sight with hidden rear leaf • Baer dovetail front sight • Lowered and flared ejection port • Tuned and polished extractor • Baer extended ejector • Baer checkered slide stop • Baer speed trigger with crisp 4 lb pull • Baer deluxe Commander hammer and sear • Baer beavertail grip safety with pad • Flat serrated mainspring housing • Beveled mag well • Polished feed ramp and throated barrel • Baer extended ambi safety • High checkered front strap @ 30 lpi • Pistol tuned for total reliability • Baer Premium Checkered Cocobola grips • Blued finish • (2) 8-round premium magazines

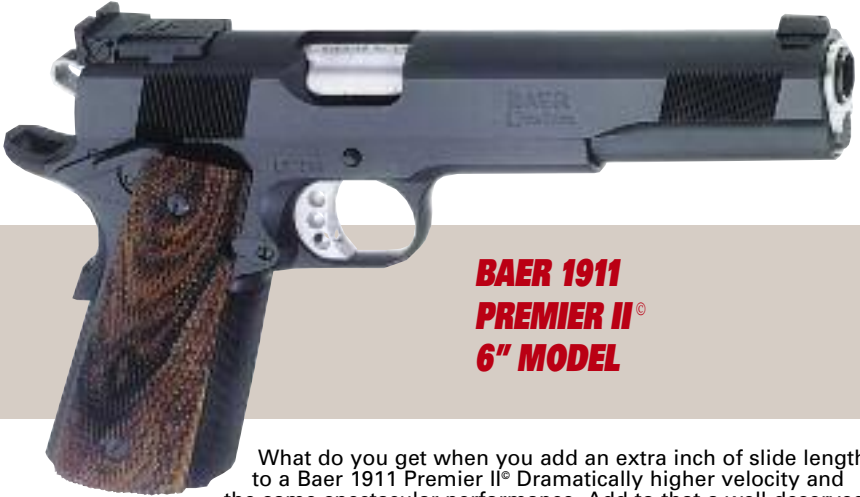
Caliber: .45 ACP; .38 Super w/supported chamber; .400 COR-BON. The Premier II® is also available as a dual caliber 45 ACP/.400 Cor-Bon combo, with both barrels fit at the same time to guarantee easy interchangeability and equal accuracy for both calibers.

Ask about our special 1½" guarantee.



"I have had the opportunity to test a goodly number of this remarkable pistolsmith's (Les Baer's) guns. They have been consistently excellent."

Charles E. Petty
American Handgunner
Magazine, Jan/Feb, 2002



BAER 1911 PREMIER II® 6" MODEL

What do you get when you add an extra inch of slide length to a Baer 1911 Premier II®? Dramatically higher velocity and the same spectacular performance. Add to that a well deserved reputation for superior quality, dependability and value, and the result is a guaranteed winner. Our 6" Premier II® includes all the features of our original 5" Premier II® including:

Baer NM steel frame, NM slide and NM barrel with stainless bushing • Baer 6" slide fitted to frame
• Double serrated slide • Low mount LBC adjustable sight with hidden rear leaf • Baer dovetail front sight
• Lowered and flared ejection port • Tuned and polished extractor • Baer extended ejector • Baer checkered slide stop • Baer speed trigger with crisp 4 lb pull • Baer deluxe Commander hammer and sear • Baer beavertail grip safety with pad • Flat serrated mainspring housing • Beveled mag well • Polished feed ramp and throated barrel • Baer extended ambi safety • High checkered front strap @ 30 lpi • Pistol tuned for total reliability • Baer Premium Checkered Cocobola grips • Blued finish • (2) 8-round premium magazines

Caliber: .45 ACP, .38 Super w/supported chamber
Ask about our 1½" guarantee!





NEW! BAER 1911 BOSS .45

A fitting tribute to the high performance 1970s muscle car that inspired it. Les Baer is still the king of custom built 1911 pistols in addition to being a well known aficionado of high performance American muscle cars. That's why Les named his newest 1911 model after the Boss 429 Mustangs he admires above all other cars. Like our entire pistol line, our newest .45 is based on our popular Premier II, but it has enough thoughtful extra touches to really make it the new Boss of custom .45s. As with our other pistols, the new Boss is guaranteed to shoot 3" groups at 50 yards. Special features include:

- Rear cocking serrations on the slide
- Baer fiber optic front sight (red)
- Flat mainspring housing, checkered at 20 lpi
- Extended combat safety
- Special tactical package
- Chromed complete lower
- Blued slide
- (2) 8-round premium magazines

Caliber: .45 ACP





**BAER 1911
PREMIER II® SUPER-TAC**
Comes with Night Sights!

**.45 ACP NOW
AVAILABLE IN
CALIFORNIA**

Here's another interesting wrinkle on America's favorite 1911. We've added a special tactical package including special sights and a special finish to the Premier II® to make it an ideal duty/tactical sidearm. Features include:

- Baer NM steel frame, NM slide and NM barrel with stainless bushing
- Slide fitted to frame
- Double serrated slide
- Low mount LBC adjustable rear sight and Baer dovetail front sight both fitted with tritium night sights
- Lowered and flared ejection port
- Tuned and polished extractor
- Baer extended ejector
- Baer checkered slide stop
- Baer speed trigger with crisp 4 lb pull
- Baer deluxe Commander hammer and sear
- Baer beavertail grip safety with pad
- Flat serrated mainspring housing
- Beveled mag well
- Polished feed ramp and throated barrel
- Baer tactical style ambi safety
- High checkered front strap @ 30 lpi
- Pistol tuned for total reliability
- Baer Premium Checkered Cocobola grips
- Deburred for tactical carry
- Dupont S coating on complete pistol for maximum corrosion resistance
- (2) 8-round premium magazines

Calibers: .45 ACP/ .400 COR-BON. The Premier II® Super-Tac is also available as a dual caliber .45 ACP/.400 Cor Bon combo, with both barrels fit at the same time to guarantee easy interchangeability and equal accuracy for both calibers.

Ask about our special 1 1/2" guarantee.



**BAER 1911
PROWLER III®**

We're bringing back our very popular Prowler III, a modified version of our popular Premier II. This superb defensive handgun includes a tapered cone stub weight. It features superior recoil reduction and sight acquisition. Features include:

- Baer NM steel frame, NM slide and NM barrel with tapered cone stub weight
- Baer reverse plug
- Slide fitted to frame
- Double serrated slide
- Low mount BoMar sight with hidden rear leaf
- Baer dovetail front sight
- Lowered and flared ejection port
- Tuned and polished extractor
- Baer extended ejector
- Baer checkered slide stop
- Baer speed trigger with crisp 4 lb pull
- Baer deluxe Commander hammer and sear
- Baer beavertail grip safety with pad
- Flat serrated mainspring housing
- Beveled mag well
- Polished feed ramp and throated barrel
- Baer extended ambi safety
- High checkered front strap @ 30 lpi
- Pistol tuned for total reliability
- All corners rounded for tactical use
- Baer Premium Checkered Cocobola grips
- Blued finish
- (2) 8-round premium magazines

Calibers: .45 ACP



**5" .45 ACP NOW
AVAILABLE IN
CALIFORNIA**

BAER 1911 CUSTOM CARRY **Comes with Night Sights!**

You'll look a long time to find a real custom pistol at a price this low. Baer's Custom Carry is perfectly suited to home defense, duty use or weekend plinking. Like all Baer pistols, it's guaranteed to shoot 3 inch groups at 50 yards. Features include:

Baer NM frame, NM slide and NM barrel with stainless bushing (see below for frame and slide options) • Baer deluxe fixed combat sight • Baer dovetail front sight, improved ramp style night sights • Double serrated slide • Baer speed trigger with crisp 4 lb pull • Baer deluxe hammer and sear • Baer tactical style extended ambi safety • Beveled mag well • Polished feed ramp and throated barrel • Tuned extractor • Baer extended ejector • Baer checkered slide stop • Lowered and flared ejection port • High checkered front strap @30 lpi • Tuned for total reliability • All corners rounded for tactical carry • Baer Premium Checkered Cocobolo grips • (2) 8-round premium magazine • Flat serrated mainspring housing

Calibers: .45 ACP



NEW! BAER 1911 **.38 SUPER COMANCHE** **Comes with Night Sights!**

This superior carry pistol boats most of the same features as the popular Baer 1911 Custom Carry but it's built with the shorter Comanche slide and barrel, plus it's chambered for the fast and accurate .38 Super caliber. Features include:

Baer NM frame • NM slide with rear serrations only • NM barrel with supported chamber • Stainless steel bushing • Baer deluxe fixed combat rear sight with night sight • Baer dovetail front sight ramp style with night sight • Baer speed trigger with 4 lb. pull • Baer tactical ambi safety • Baer deluxe hammer and sear • Beveled mag well • Polished feed ramp and throated barrel • Tuned extractor • Baer extended ejector • Baer checkered slide stop • Lowered and flared ejection port • high checkered front strap @ 30 lpi • Tuned for total reliability • All corners rounded for tactical carry • Baer premium checkered cocobolo grips • Flat serrated mainspring housing • (2) 9-round premium magazines with base pads

Caliber: .38 Super
Finish: blue finish or optional chrome or DuPont S finish
Note: Available in steel only



**BAER 1911
ULTIMATE RECON PISTOL, 5"
Comes with Night Sights!**

For things that go bump in the night, a pistol that lights up the dark is just the ticket. This new Recon Pistol from Les Baer Custom is based on a full size 1911 frame with an integral Picatinny rail system that's actually part of the frame, so mounting a tactical light for instant illumination is easy and practical. The Recon Pistol comes standard with a Streamlight TLR-1 but the SureFire X-300 is available for an extra charge. Features include:

- NM Caspian frame with integral Picatinny rail system for frame mounted light
- NM slide and NM barrel with stainless bushing
- Baer deluxe fixed combat rear sight with night sights
- Baer dovetail front sight (ramp style) with night sights
- Double serrated slide
- Baer speed trigger with crisp 4 lb. pull
- Baer deluxe hammer and sear
- Baer tactical style extended combat safety
- Beveled mag well
- Polished feed ramp and throated barrel
- Tuned extractor
- Baer extended ejector
- Baer checkered slide stop
- Baer checkered slide stop
- Lowered and flared ejection port
- High checkered front strap @ 30 lpi
- Flat serrated mainspring housing
- Tuned for total reliability
- All corners rounded for tactical carry
- Baer Premium Checkered Cocobolo grips
- (2) 8-round premium magazines

Calibers: .45 ACP

Finish: Bead Blast Blue Finish or optional Bead Blast Chrome Finish



**NEW! BAER 1911
ULTIMATE TACTICAL CARRY
5" MODEL**

The new Baer Ultimate Tactical Carry pistol is a serious self defense pistol, designed by firearms professionals who teach others to survive in a dangerous world. This distinctive pistol is extremely practical and includes virtually everything you need and nothing you don't. That makes it an exceptional value, as well as a dependable companion that you'll own and trust for a lifetime. Features include:

- Baer steel NM frame • Baer steel NM slide with front and rear serrations • Slide fitted to frame • Baer NM barrel with stainless match bushing • LBC deluxe fixed combat rear sight with tritium inserts • Baer dovetail front sight with tritium insert • Lowered and flared ejection port • Baer checkered slide stop • Baer extended ejector • Combat extended safety • Baer aluminum match trigger • Baer deluxe Commander hammer and sear • Crisp 4 lb. pull • Baer tuned extractor • Baer beavertail grip safety with pad • High checkered front strap @ 30 lpi • flat checkered mainspring housing at 20 lpi • Beveled magazine well • Polished feed ramp and throated barrel • complete pistol rounded for tactical use • blued finish on complete pistol • Deluxe special slim line grips • (3) stainless steel 8-round premium magazines

Calibers: .45 ACP



**BAER 1911 THUNDER
RANCH SPECIAL**
Comes with Night Sights!

**.45 ACP NOW
AVAILABLE IN
CALIFORNIA**

The Les Baer Custom Thunder Ranch 1911 is a serious, no-nonsense self-defense pistol conceived by Clint Smith, Director of Thunder Ranch, and built by Les Baer. The result is a distinctive yet practical 1911 that's ideal for personal defense.

Features include:

- Baer steel NM frame • Baer steel NM slide with front and rear serrations • Slide fitted to frame • Baer NM barrel with stainless match bushing • LBC deluxe fixed combat rear sight with tritium inserts • Baer dovetail front sight with tritium insert • Lowered and flared ejection port • Baer checkered slide stop • Baer extended ejector • Combat extended safety (extended ambi for left handed shooters) • Baer aluminum match trigger • Baer deluxe Commander hammer and sear • Crisp 4 lb. pull • Baer tuned extractor • Baer beavertail grip safety with pad • High checkered front strap at 30 lpi • Flat checkered mainspring housing at 20 lpi • Beveled magazine well • Polished feed ramp and throated barrel • Complete pistol rounded for tactical use • Blued finish on complete pistol • Deluxe special slim line grips with Thunder Ranch logo (not available with extended ambi safety) • (3) Stainless steel 7-round premium magazines • Special Thunder Ranch logo engraved on slide • Special serial numbers with "TR" prefix



Calibers: .45 ACP



NEW! SHOOTING USA CUSTOM PISTOL 5" MODEL

**Comes with DVD of the Les Baer Custom
story, as told by Shooting USA**

When popular television host Jim Scoutten came to Les Baer Custom with his television crew in November of 2010 to shoot an episode for his popular Shooting USA series, he became an immediate fan of Les Baer's 1911 pistols. At the end of two and one-half days of shooting, Jim and Les Baer agreed to offer a Shooting USA 1911 pistol, built by Les Baer Custom. The special pistol includes most of the features of Les Baer's flagship Premier II® pistol (see page 8) and also comes with:

- Tactical extended safety
- A special serial number prefix with "S USA" and the number
- The famous *Shooting USA* logo engraved on the right side of the slide
- Blued finish
- (2) 8-round stainless steel magazines
- Special DVD produced by *Shooting USA*

Calibers: .45 ACP

"I've seen how Les Baer guns are built. We've told the story on TV. You'll never find a better built 1911, with every part hand fitted for extraordinary accuracy and performance. When we finished taping in the factory, I told Les he isn't charging enough because his guns are worth way more than his price."

Jim Scoutten
Shooting USA



**LES BAER CUSTOM
CENTENNIAL MODEL 1911 PISTOL**
**A fitting 100th anniversary tribute to
America's favorite pistol.**
Deluxe charcoal blue finish

John Browning didn't do much wrong. But when he designed the 1911 pistol, he outdid himself by creating a legend that has served many generations of Americans and has become a true icon, in the process.

2011 is the 100th anniversary year of "Old Ironsides". Les Baer Custom is honoring Browning's masterpiece with a special **Centennial Model 1911**. The special model has the appearance of a true collectible — including real ivory grips which are a real rarity in this day and age — but it's built on the same format as Baer's own Premier II® so it's fully capable of doing daily duty as a working pistol. In addition to the Premier II standard features (see page 8), the **Centennial Model 1911** also includes:

- Rear serrated slide with the model name engraved on the slide
- Deluxe charcoal blue finish
- Extended tactical safety
- Real ivory grips
- Special presentation box
- (3 eight-round stainless steel magazines)

This Centennial 1911 is a truly great pistol. And that's appropriate when you pay homage to 100 years of firearms history.

Caliber: .45 ACP





BAER 1911 S.R.P.[®]

(Swift Response Pistol)

Comes with Night Sights!

**.45 ACP NOW
AVAILABLE IN
CALIFORNIA**

Ultimately, everyone who needs to carry a pistol for tactical use or who keeps a pistol for self defense wants something that's completely reliable, uncannily accurate, powerful enough to deal with any situation, and familiar as an old shoe. That was a tough bill to fill until Les Baer introduced his 1911 S.R.P., an uncompromising single stack performer. Features include:

Baer steel NM frame • Baer steel NM slide with front and rear serrations • Slide fitted to frame • Baer NM barrel with stainless match bushing • Baer deluxe fixed combat sight • Baer dovetail ramp type front sight • Lowered and flared ejection port • Baer checkered slide stop • Baer extended ejector • Baer tactical style ambi safety • Baer speed trigger • Baer checkered flat mainspring housing • Checkered front strap @ 30 lpi • Fitted and tuned extractor • Beveled mag well • Complete tactical action job • Baer beavertail safety with pad • Baer deluxe Commander hammer and sear • Tritium night sights installed front and rear • Deburred for tactical carry • DuPont S coating on complete pistol for maximum corrosion resistance • Baer Premium Checkered Cocobolo grips • Tuned for total reliability • Test fired with Federal 230 grain Hydra-Shok ammo and Remington Sabre 230 grain H.P. ammo and guaranteed to shoot 2 1/2" groups at 50 yards • (3) 8-round premium magazines • Special wooden presentation box with glass lid

Calibers: .45 ACP

Options: Comanche Model



*Ask about our special
1 1/2" guarantee!*



*"On patrol or on the range, my Les
Baer is always ready for action.*

*Lifesaving quality and performance
come with all Les Baer pistols."*

Mike Dalton



BAER 1911 MONOLITH

Patent No: US 6,345,463

Baer Custom's MONOLITH is a real monument in steel. It's one bad boy that's as tough and rugged as it looks. The MONOLITH's steel frame has an extra long dust-cover (the only 1911 in the business) that matches the length of the slide. That gives the five-inch slide and the frame a blocky, one-piece appearance...really an awesome look. It also gives the MONOLITH some extra heft on the front end which helps reduce muzzle flip. If you compete in USPSA Limited Class or in Centerfire Bullseye matches, you know the kind of edge that can give you. We guarantee 3" groups at 50 yards. Features include:

- Baer N.M. steel Monolith frame • Baer Monolith flat bottom double serrated slide • Baer NM barrel and stainless bushing • Low mount LBC adjustable sight with hidden rear leaf • Baer dovetail front sight
- Lowered and flared ejection port • Tuned and polished extractor • Baer extended ejector • Baer checkered slide stop • Baer speed trigger with crisp 4 lb pull • Baer deluxe Commander hammer and sear • Baer beavertail grip safety with pad • Flat serrated mainspring housing • Beveled mag well • Polished feed ramp and throated barrel • Baer extended ambi safety • High checkered front strap @ 30 lpi • Pistol tuned for total reliability • Baer Premium Checkered Cocobola grips • Blued finish • (2) 8-round premium magazines

Caliber: 45 ACP. Also available in supported chamber: 9mm or .38 Super.

Ask about our special 1 1/2" guarantee.



BAER 1911 MONOLITH HEAVYWEIGHT

Patent No: US 6,345,463

Here's another Monolith model with still more weight added - a full 3.5 oz. over and above the weight of our popular Premier II®. All the weight has been added along the center line of the pistol on the dust cover so the balance is excellent. The added weight is a great way to reduce muzzle flip and felt recoil without adding the extra length and expense of a compensator. Features are exactly the same as the Monolith with the addition of the heavier frame. We guarantee 3" groups at 50 yards.
(2) 8-round premium magazines.

Caliber: 45 ACP. Also available in supported chamber: 9mm or .38 Super.

Ask about our special 1 1/2" guarantee.



BAER 1911 MONOLITH TACTICAL ILLUMINATOR MODEL

Patent No: US 6,345,463

If you face the potential of dealing with things that go "bump" in the night and if you're concerned about being able to accurately identify the source of the disturbance, here's the absolute ultimate for home defense or duty use. We start with the Monolith Heavyweight described above. Then we mount the Streamlight TLR-1 to create the most superior defense package available on any custom 1911. The Illuminator features a quick release on the light which enables the light to be either installed or removed in seconds. That quick attach/remove feature allows you the option of using your Monolith Tactical Illuminator without the light for daytime use or matches, then quickly installing the light for potential low light or no light situations. The Illuminator includes both a "Momentary" and a "Constant On" switch. (2) 8-round premium magazines.

*Caliber: 45 ACP; also available in supported chamber 9mm or .38 Super.
Ask about our special 1 1/2" guarantee.*





Patent No: US 6,477,802

**BAER 1911
MONOLITH
COMMANCHE**
Comes with Night Sights!

Like our original Monolith, this reduced size version is tough as they come. The steel frame has an extra long dust cover that matches the length of the slide. That gives the $.41/4$ " slide and the frame a blocky, one-piece appearance. It also gives the Monolith Commanche extra heft on the front end which helps reduce muzzle flip. Guaranteed to shoot 3" groups at 50 yards. In addition to all the features of the original Monolith (except for front cocking serrations), the Commanche also includes:

- Tritium night sights front and rear and our deluxe fixed rear sight
- Edges rounded for tactical carry

Caliber: .45 ACP only



Patent No: US 6,477,802

**BAER 1911
MONOLITH COMMANCHE
HEAVYWEIGHT**
Comes with Night Sights!

Exactly like the Monolith Commanche described above but the dust cover is slightly thicker to add an extra 2 oz. of weight, and the dust cover is flat on the bottom like the full size Monolith Heavyweight.

Caliber: .45 ACP only



BAER 1911 STINGER MODEL

You asked for "small and efficient" and that's what we've given you! Our new Stinger model is designed specifically for easy carry with our shorter length grip frame (Officer's style) and our own Commanche top end. It features the utmost in reliability and accuracy in a special package that includes our new 7-round stinger stainless magazine. It's a sure fire winner! Blued model pictured; also available in stainless version. Features include:

- Baer N.M. Stinger frame • Baer Commanche slide with rear serrations • Slide fitted to frame • Baer NM barrel with stainless bushing • Low mount combat fixed rear sight • Dovetail front sight • Lowered and flared ejection port • Tuned and polished extractor • Baer extended ejector • Baer checkered slide stop
- Baer speed trigger with crisp 4 lb pull • Baer deluxe Commander hammer and sear • Baer beavertail grip safety with pad • Flat serrated mainspring housing • Beveled mag well • Polished feed ramp and throated barrel
- Baer extended ambi safety • High checkered front strap @ 30 lpi • Edges rounded for tactical carry • Pistol tuned for total reliability • Baer Premium Checkered Cocobola grips • Blued finish • (2) 7-round premium Stinger magazines

Caliber: .45 ACP



BAER 1911 STINGER MODEL, STAINLESS STEEL

This brand new model of our popular little Stinger model features a stainless steel frame and slide. This just could be the most perfect compact sized pistol ever made.

Caliber: .45 ACP



**BAER 1911
CONCEPT I®**

**.45 ACP NOW
AVAILABLE IN
CALIFORNIA**

Baer's line of Concept pistols pushes the envelope for the perfect combination of ahead-of-the-art design, true custom craftsmanship, unparalleled performance, and the best value in the firearms industry. All Concept® pistols come with a crisp 4 lb. pull and all are guaranteed to deliver 3" groups at 50 yards.

The Baer Concept I® is a full size custom 1911 with features that include:

Baer steel NM frame, NM slide and NM barrel with Baer stainless bushing • Slide fitted to frame • Double serrated slide • LBC adjustable deluxe low mount rear sight with hidden rear leaf • Baer dovetail front sight • Baer beavertail grip safety w/pad • Baer checkered slide stop • Tuned Baer extractor • Baer extended ejector • Baer deluxe hammer and sear • Lowered and flared ejection port • Polished feed ramp and throated barrel • Baer flat serrated mainspring housing • Beveled magazine well • Baer extended ambi safety • Baer fitted speed trigger with action job • Baer Premium Checkered Cocobolo grips • Blued finish • Tuned for total reliability • (2) 8-round premium magazines

CALIBERS: .45 ACP



**BAER 1911
CONCEPT II®**

**.45 ACP NOW
AVAILABLE IN
CALIFORNIA**

Another full size 1911 model. It's identical to our Concept I model except a Baer deluxe fixed combat sight replaces the LBC adjustable. (See Concept I® for full list of standard features.)

Note: Concept I® and Concept II® do not include a checkered front strap. All other Concept pistols include checkered front straps. Comanche pistols have rear-serrated slides only.



**BAER 1911
CONCEPT III®**

This full size government model is built on a Baer stainless steel NM frame matched to a Baer blued steel NM slide. The rear sight are LBC adjustable, and the front strap of the frame is checkered at 30 lpi. All other features are standard for the Concept® line. (See Concept I® for full list of standard features.)



**BAER 1911
CONCEPT IV®**

As pictured, the Concept IV® is a ringer for Concept III® but with a Baer deluxe fixed combat rear sight replacing the LBC adjustable. (See Concept I® for full list of standard features.)



**BAER 1911
CONCEPT V®**

A full size, all-stainless beauty. Both the NM frame and NM slide are stainless steel topped with a LBC adjustable rear sight. The front strap is checkered at 30 lpi. (See Concept I® for full list of standard features.)



**BAER 1911
CONCEPT V® 6"**

Identical to the all-stainless Concept V® but with the addition of a 6" long stainless slide and 6" barrel.



**BAER 1911
CONCEPT VI®**

Identical to the Concept V® but with a Baer deluxe fixed combat rear sight. (See Concept I® for full list of standard features.)



**BAER 1911
CONCEPT VII®
Comes with Night Sights!**

The first of four Concept® guns in our reduced "Commanche" size. Concept VII® is all blued steel and comes with a Baer deluxe fixed combat rear sight. The front strap is checkered at 30 lpi. (See Concept I® for full list of standard features.)



**BAER 1911
CONCEPT VIII®
Comes with Night Sights!**

Another reduced size Commanche. This one is all-stainless steel... both a Baer stainless NM frame and NM slide...with Baer deluxe fixed combat rear sight. The front strap is checkered at 30 lpi. (See Concept I® for full list of standard features.)

THE BAER/EMERSON CQC-45 COMBAT PISTOL & KNIFE PACKAGE



What a package! It's a perfect combination of the finest work of two true icons of their respective crafts: Les Baer, the acknowledged king of custom 1911 pistols and Ernest Emerson, a trailblazer in the design and production of custom fighting knives. Because this is the first ever joint venture between Baer and Emerson, purchasers are virtually guaranteed that the set will eventually become a highly prized collectible. Or, for those who favor function over form, there's no better way to upgrade your carry gun/knife at the same time than with these two pieces of precision equipment from two of America's finest.

The pistol and knife are sold as a package only. Each package includes:

- Matching numbers on both the Baer 1911 and the Emerson knife;
- Special matching G-10 laminate grips;
- The Les Baer pistol will be engraved with the CQC-45 model name and the Emerson Knives logo on the slide;
- Each package will be shipped with Ernest Emerson's signature Ace of Spades playing card with a bullet hole shot through the center of the card and the card signed by both Les Baer Sr. and Ernest Emerson.



BAER 1911 CQC-45 COMBAT PISTOL

The Baer 1911 CQC is a fully equipped combat pistol, perfectly suited for self defense or duty use. Features include:

- Baer steel NM frame – Baer steel NM slide with rear cocking serrations • Slide fitted to frame • Baer NM barrel with stainless match bushing • LBC deluxe fixed combat rear sight • Baer dovetail front sight with tritium insert • Lowered and flared ejection port • Baer checkered slide stop • Baer extended ejector • Combat extended safety • Baer aluminum match trigger • Baer deluxe Commander hammer and sear • Crisp 4 lb. pull • Baer tuned extractor • Baer beavertail grip safety with pad • High checkered front strap at 30 lpi • Flat mainspring housing • Beveled magazine well • Polished feed ramp and throated barrel • Tactical mag catch - Complete pistol rounded for tactical use • DuPont S finish on complete pistol • (3) 8-rd. premium magazines



EMERSON COMBAT SYSTEMS CQC-45 KNIFE

The Emerson CQC-45 is a renamed Emerson Nineteen-11 model, an exquisitely made no-frills working tool that's made to perform as expected and to keep performing all day long.

Specs:

Overall length – 8.755"
Blade length – 3.850"
Length closed – 5.125"
Heat treat – 57-59 RC Rockwell

Materials:

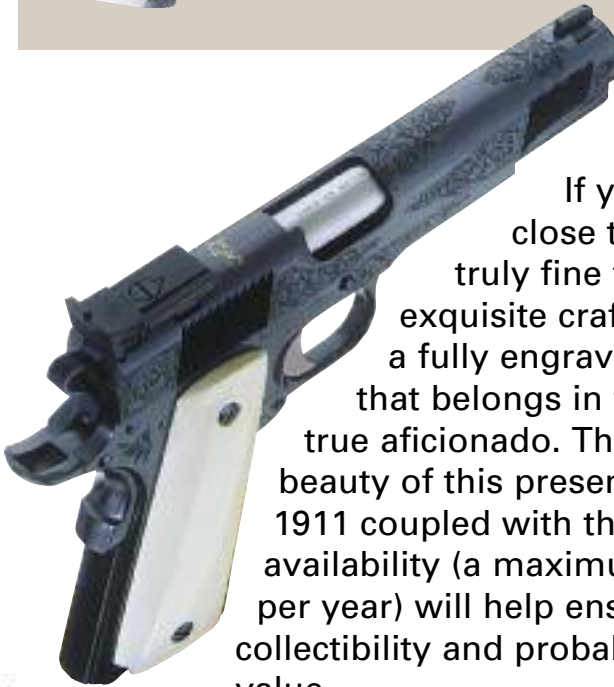
Blade – Crucible-154 CM Steel
Liners and lock – 6AL 4V aerospace grade titanium
Handles – Premium grade G-10 laminate

Features:

- Patented Hidden Wave or Thumb disc one hand opening
- .090 thick titanium liner locking system
- Patented Safe-D-Tent for safe closed position
- Emerson Dragon's teeth serrations



**LIMITED EDITION
LES BAER
PRESENTATION
GRADE 1911**



If you or someone close to you admires truly fine firearms and exquisite craftsmanship, here's a fully engraved masterpiece that belongs in the collection of a true aficionado. The breathtaking beauty of this presentation grade 1911 coupled with the limited availability (a maximum of forty pistols per year) will help ensure its continued collectibility and probable investment value.

Each Les Baer Presentation Grade 1911 is actually a fully equipped Baer Premier® II which has been enhanced with the addition of these special features:

- Minutely detailed hand-chiseled engraving, an old world art form rarely seen in today's high tech world;
- Special Charcoal Bluing on all polished surfaces, which have all been hand prepared with ultra-fine 1200-grit material;
- For contrast, a rich Nitre Blue is used on the pins, thumb safety, slide stop, grip screws, mag catch lock and hammer;
- The deep Charcoal Bluing is complemented by real ivory grips;
- The handsome "LBC" engraving on the top of the slide is inlaid with gold;
- At your option, your name or the name of the recipient can be engraved on the slide with the legend: "To (Name) by Les Baer";
- Each pistol comes with a special presentation box.



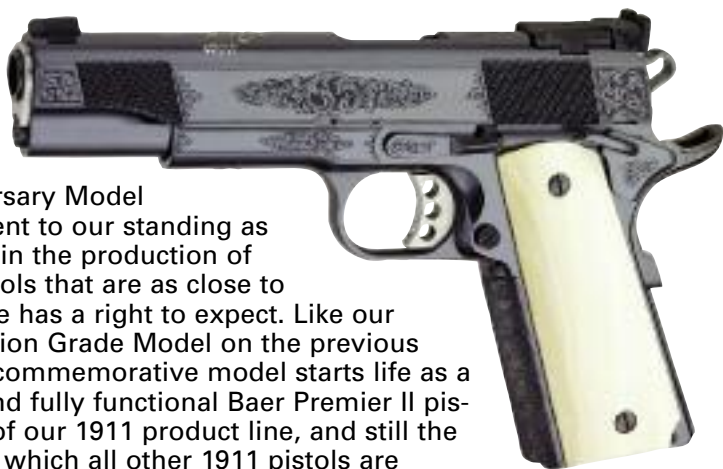
For any collector who deserves a very special "Thank You" for a job well done — or as a personal reward for your own hard work — this is the pistol that will be the crowning touch to any firearms collection.



**LES BAER CUSTOM
25TH ANNIVERSARY
MODEL 1911 PISTOL
*Special Collectors' Model***

In honor of our twenty-five years in business, Les Baer Custom is proud to announce this very special offering.





Our 25th Anniversary Model 1911 is a testament to our standing as the world leader in the production of custom 1911 pistols that are as close to perfect as anyone has a right to expect. Like our special Presentation Grade Model on the previous pages, this new commemorative model starts life as a fully equipped and fully functional Baer Premier II pistol, the flagship of our 1911 product line, and still the standard against which all other 1911 pistols are judged.

Then, to make it extra special and extra beautiful, we have enhanced it with these unique features that help guarantee its strong visual appeal and its continued collectibility for years to come:

- Exquisitely crafted hand engraving on both sides of the slide and frame;
- Les Baer's actual signature and the legend "25th Anniversary" have been engraved, then inlaid with white gold on the top of the slide;
- All the flat metal surfaces have been hand prepared with ultra-fine 1200-grit material, then the entire pistol has been finished with a deep, rich Charcoal Bluing;
- Each pistol comes with real ivory grips, an absolutely stunning contrast to the deep blue finish;
- A special presentation box is included.



HIGH PERFORMANCE COMPONENTS & PARTS

Mike Dalton says: "Les Baer is truly a master of metal and an engineering genius. Les Baer pistols perform like magic and can make anyone a better shooter."



**LES BAER
CUSTOM, INC.**

*Performance.
It's everything.*



BAER 1911 "MATCH" FRAMES



Standard
1911 match
frame



1911 Stinger frame with
checkered front strap @ 30
lpi and cut for Baer
beavertail

Our superior match frames are much more than just the foundation on which we build our guns -- they're the primary building block on which our business and our reputation have been built, as well.

No 1911 frames anywhere compare to Baer frames. That's why they've become the hands-down favorites of so many other custom gunsmiths. We hold the tightest tolerances in the industry to guarantee consistency. We can guarantee that consistency because we do all the machining ourselves on our own CNC equipment. And all our frames come standard with beveled mag wells.

Note: Stainless steel frames are also available, as well as reduced Commanche" and "Stinger" size frames. All Baer frames are available separately or paired with Baer slides, individually hand fitted for the best possible fit.

BAER STEEL FRAMES, .45 ACP FEED RAMP

Standard 1911, Commanche Size or Stinger Size

Available as:

- Standard 1911 Match Frame
- 1911 Match Frame with .250 radius cut to fit Baer's beavertail grip safety
- 1911 Match Frame with .250 radius cut and checkered front strap (30 lpi standard; 20 lpi by special order)

BAER PREMIUM STAINLESS STEEL FRAMES, .45 ACP FEED RAMP

*Standard 1911, Commanche Size or Stinger Size
(not pictured)*

Available as:

- 1911 Match Frame with .250 Radius cut to fit Baer's beavertail grip safety
- 1911 Match Frame with .250 radius cut and checkered front strap @ 30 lpi

BAER MONOLITH FRAMES

Les Baer Custom's patented, all-steel Monolith frames are also available (not pictured).

Available as:

- Monolith Match Frame with Extended Dust Cover (Patent No: US 6,345,463)
- Monolith Heavyweight Match Frame with Extended Dust Cover (Patent No: US 6,345,463)
- Monolith Commanche National Match Frame with Extended Dust Cover (Patent No: US 6,477,802)
- Monolith Commanche Heavyweight National Match Frame with Extended Dust Cover (Patent No: US 6,477,802)

BAER 1911 "MATCH" SLIDES



5" Double serrated slide w/hidden rear leaf LBC low mount cut and dovetail front sight cut



5" Double serrated slide



6" Slide w/hidden rear leaf LBC adjustable low mount cut



Commanche length slide w/no sight cut



Flat bottom double serrated Monolith slide

Baer 1911 slides have set the standard for premium quality components. They're quality engineered with features no other 1911 slides can match:

- Precision machined from extremely high quality steel;
- Heat treated to 40 R.C.;
- Precision machined on our own state of the art CNC equipment after heat treating to prevent warpage
- Rail dimensions machined to ultra-precise, uniform specifications;
- Barrel channel is precision bored;
- Slides have 9mm firing pin holes to keep primer flow to a minimum;
- The recoil plug is machined all the way through, so there's no more drilling or reaming required to install reverse recoil plugs;
- Precision slide serrations on rear;
- Lowered ejection port;
- Cocking serrations on front of slide (optional on Commanche length slides)

Baer slides are available in the following variations and options:

- Machined steel or stainless steel;
- Standard 1911 length or shortened Commanche length;
- With or without cut for LBC low mount rear sight with hidden rear leaf;
- With double serrations, with rear serrations only or with no serrations.
- Flat bottom double serrated Monolith slide;
- Calibers: 9mm, .38 Super, 10mm, 40 S&W or .45 ACP. (Stainless slides and Commanche slides in .45 ACP only)

BAER 6" SLIDE

In a handgun, one extra inch of length means more than just being one inch closer to your target. It means dramatically increased velocity.

Les Baer Custom offers the best six-inch 1911 slides on the market. That's six inches long without compensators! Like all Baer components these match grade slides are precision machined from top grade steel. They're not welded; they're all one-piece construction. What a great edge for a USPSA Limited Class gun, a Bullseye Wadcutter gun, or for any .45 that's expected to deliver peak performance and accuracy. 6" slides are also available in 9mm and .38 Super.

BAER "MATCH" BARRELS



5" N.M. Barrel



6" N.M. Barrel



5" N.M. Barrel w/Supported Chamber

Whether you're building or upgrading a 1911, it will only be as accurate as the barrel. Our match grade 1911 barrels are the best on the market. They're made from 4350 steel. All critical areas are oversized for proper fitting. The rear locking lug is also slightly oversized to allow you to obtain a central firing pin hit. And the smoothness and consistency of the bores is really remarkable. Several options available:

- Baer 4 1/4" N.M. Commanche Barrel, .45 ACP
- Baer 4 1/4" N.M. Commanche Barrel, .45 ACP (Supported)
- Baer 5" N.M. Barrel, .45 ACP
- Baer 5" N.M. Barrel, .45 ACP (Supported)
- Baer 5" N.M. Barrel, 40 S&W (Supported)
- Baer 5" N.M. Barrel, .400 COR-BON
- Baer 5" N.M. Barrel, 9mm (Supported)
- Baer 5" N.M. Barrel, .38 Super (Supported)
- Baer 6" N.M. Barrel, .45 ACP
- Baer 6" N.M. Barrel, .45 ACP (Supported)
- Baer 6" N.M. Barrel, 9mm (Supported)
- Baer 6" N.M. Barrel, .400 COR-BON
- Baer 6" N.M. Barrel, .38 Super (Supported)
- Baer 4 1/4" N.M. barrel, .38 Super
- Baer 4 1/4" N.M. Commanche barrel, .38 Super (Supported)



BAER 1911 CUSTOM PARTS

1. Rolo Low-Mount Adjustable Sight



1

This brand new sight is perhaps the most compact low-mount adjustable sight on the market. It fits the same dovetail cut as our popular LBC Adjustable Low Rear Sight, but the rear leaf requires a different cut for the rounded rear of the Rolo sight. Fully adjustable for both elevation and windage.

2. Rolo Low-Mount Adjustable Sight With Tritium inserts



2

Our new Rolo low-mount adjustable sights are also available with tritium inserts so they become fully adjustable night sights. The illuminated tritium inserts are also an advantage in target shooting and competition because they allow you to find a sight picture faster in any lighting conditions, either full sunshine or low light.



5

3. Right or Left J-Style Slide Cocker

Excellent method of cocking a slide equipped with a scope mount. Machined from aluminum.

4. Les Baer Custom Adjustable Low Mount Rear Sight

The best adjustable sight in the world for target shooting.



3

5. LBC Adjustable Sight With Night Sights

The same LBC sights described above but with tritium inserts installed on a special leaf. Excellent for low light applications.



6

6. Baer Deluxe Fixed Combat Sight

A superior tactical style sight and a very low profile. It also incorporates a no-snag design. Serrated on sides.



4



7

7. Baer Deluxe Fixed Combat Sight With Tritium Night Sights



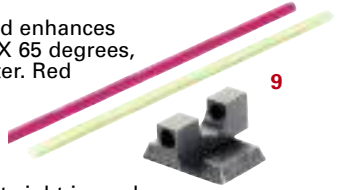


8. Baer Dovetail Front Sight

This blank dovetail front sight is machined from bar stock. It can be contoured to many different configurations to meet your needs. We supply this same sight to many prominent gunsmiths and manufacturers.

9. Fiber Optic Front Sight

Excellent light gathering capability and enhances front sight acquisition. Dovetail .330 X 65 degrees, .125 wide post, .185 high, .060 diameter. Red and green fiber optic.



10. Baer Dovetail Front Sight With Tritium Insert

This fully contoured and finished front sight is ready for gunsmith installation.

11. Baer 1911 Scope Mount

An excellent choice for mounting either a traditional scope or a dot sight on any 1911 pistol.



12 & 13. Baer Premium Checkered Cocobolo Grips

Les Baer Custom offers two exceptional sets of wood grips for 1911 pistols. Both are quality made from breathtakingly beautiful Cocobolo wood. (12) is checkered with a flat bottom and the housing pin is not cut out. (13) is a double-diamond pattern with a beveled bottom and the housing pin is cut out.



14. 1911 Grip Screws

Blued or stainless.



15. 1911 Grip Screw Bushings

Blued or stainless.



16. Hex Head Grip Screws For 1911

Sold in sets of four. Specify blue or stainless steel.



17

17. Baer Standard 1911 Mag Catch

Available without button only. Steel or stainless.



18

18. Tactical Magazine Release

This tactical mag release is slightly longer than the standard release. It's a perfect choice in situations in which an oversized button is not used or when class rules do not allow an oversized button.



19

19. Baer Mag Catch Lock

Blue only. Precision machined.



20

20. Baer Extended Ejector

Precision machined from bar stock and heat treated to strict tolerances. Specify .45 ACP Government Model, .45 ACP Commander Model, 9mm Government Model, or .38 Super Government Model.



21

21. Baer Machined Firing Pin Stop

This firing pin stop is machined from bar stock to precision tolerances. This is absolutely the best firing pin stop on the market.



22

22. 1911 Pin Set

All the pins for the 1911 pistol.



23

23. 1911 Hammer Strut



24

24. Baer Firing Pin

A precision made firing pin with .067 diameter that fits our own slides. Prevents the primer from flowing.



25

25. Standard 1911 Style Firing Pin (not pictured)

.45 ACP.



26

26. Baer Match Grade Extractor

Precision machined and heat treated. Available in .45 ACP or in .38 Super/9mm.



27

27. Baer Oversize Match Barrel Bushing

Stainless steel.

28. Baer Oversize Match Barrel Bushing, Comanche Size

Stainless steel.



29. Baer Reverse Recoil Plug
Stainless steel. (not pictured)

30. Baer Full Length Stainless Guide Rod and Plug



31

31. Baer Match Grade Barrel Links (1,2,3,4,5)
A must for a properly fitted match barrel. Machined from heat treated steel with dimensions centered on the holes. .266, .271, .276, .281, .286.

32. Baer Recoil Buffs For Government Model (not pictured)
Set of four.

33. Baer Disconnecter
A quality piece of equipment for any 1911.



35

34. Baer Plunger Tube
Precision machined from bar stock. Fits all 1911s.

35. Baer 1911 Spring Set
All the springs necessary for your 1911. Specify recoil spring weight. Springs also available separately.

36. Baer Deluxe Match Commander Hammer and Sear
The best you'll find. Precision made with exactly the right geometry for the very best action job. Both hammer and sear are also extremely hard, as you want them, and the surfaces all have the smoothest and brightest finish possible.



36

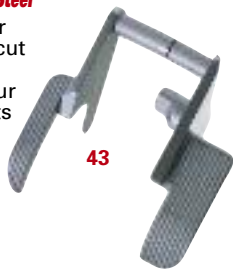
37. Baer Beavertail Grip Safety with Pad, Blue or Stainless Steel
The perfect 1911 beavertail, made to fit your hand exactly right. It features a .250 radius cut from the pin hole. The raised pad ensures positive disengagement even if you ride your thumb on the thumb safety. The hammer fits perfectly into the notch provided. Hammer bite is all but eliminated because the wide beavertail spreads the recoil over a wide portion of your hand. Available blued or in stainless steel.



37

38

38. Baer Flat, Serrated Mainspring Housing
A precision made flat, serrated housing that's slightly larger than most of the standard housings on the market. It's so well made, very little if any fitting is required to give you a "No Gap" look on your 1911. Blued or stainless.



43



39

39. Baer Flat, Hand Checkered Mainspring Housing

The same mainspring housing described above but with the added feature of 20 lpi checkering done completely by hand, not by machine. Blued or stainless.



45

Note: See description.

40. Baer Speed Trigger

Slightly oversized on the trigger pad for a tighter fit on your 1911. Adjustable for overtravel and takeup.



40

41. Baer Long Match Trigger

The same as our Speed Trigger but without holes.

42. Baer Short Match Trigger

A perfect choice for shooters with shorter fingers or who just prefer a shorter trigger pull.



41

43. Baer Extended Ambidextrous Safety

A perfect choice for any 1911 because it's contoured to match the natural bend in your thumb. This serrated safety is a must for lefthanders or for weak-hand shooting. It can also be contoured for tactical use. Blue or stainless steel available.



42

44. Baer Checkered Slide Stop

The precise checkering on this slide stop makes it a natural for shooters. The pin is also oversized at .199 to .200 to fit most 1911s on the market. Available blued or stainless.

45. Baer Custom Wood Presentation Box

Identical to the special case that comes with the Baer S.R.P.®. Handsome wood box is professionally finished and Les Baer Custom is laser engraved on the lid. Now comes with glass see-through lid. The inside is padded for excellent protection, then richly lined with luxurious velvet. Double locking latches. Fits most semi-autos and revolvers.



46

46. Baer Extended Combat Safety

Some righthanded shooters will really never need an ambidextrous safety. For those shooters, this style safety is ideal. It's precision machined and available in either blued or stainless.



44



48

47. Baer 1911 Recoil Plug, Standard Style

48. Baer 1911 Recoil Rod, Standard Style

47

49. Two-Piece Checkered Mag Well

These mag wells are a great way to add extra versatility to your 1911. If you're using your pistol both for duty/defense and for occasional competition, the two-piece design allows you to remove the bottom of the oversized mag well after a match so it's a better fit in a standard holster. When installed on one of our own Les Baer pistols, we'll also bevel both the frame and the bottom of the mag well to create a huge magazine opening. They're available in flat style only, checkered at 25 pli, and either blued or stainless.



49

50, 51 & 52. Baer Premium 1911 Magazines

We researched. We evaluated. We modified and made changes. After many months of experimentation, we are confident that we are now able to offer the very best 1911 magazine on the market. This is not just a re-hash of an existing magazine design. We developed completely new tooling, the very best stainless steel, and we adapted the best lip and follower designs we could find into most reliable working 1911 magazines you've ever used. The inside is as bright as a mirror and smooth as glass which allows the ammunition and the follower to glide effortlessly in the magazine tube.

The base of the magazine is removable for easy cleaning. Our Premium 1911 Magazine is available in stainless steel only and just for .45 ACP. When ordering, please specify either (#50) 7-round or (#51) 8-round (both will fit Government or Commanche/Commander models) or (#52) 7-round Stinger model.



50

51



52

DUPONT S COATING

This superior state of the art finish is one of the best we've ever seen. It provides advanced corrosion protection, abrasion resistance, hardness, and unmatched durability. The somewhat slick feel reflects its self-lubricating characteristics.

T-CHROME FINISH - A HANDSOME, PROTECTIVE NEW FINISH FOR YOUR LES BAER 1911

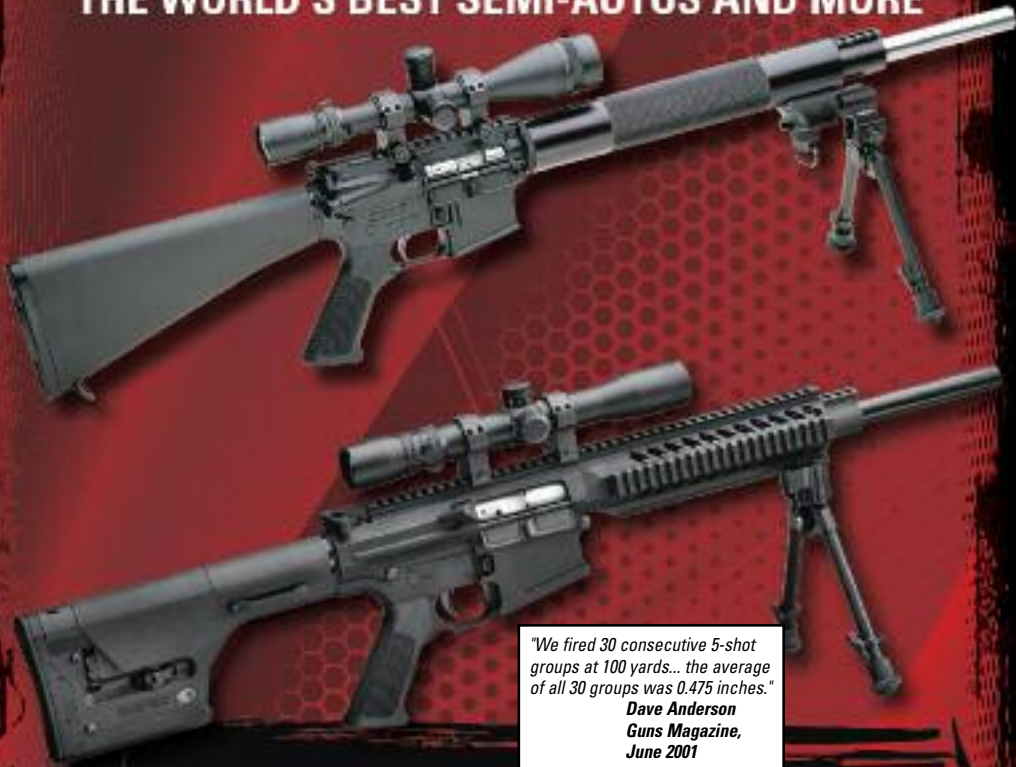
This new finish is a perfect finish for any pistol that will spend most of its time in a damp or humid environment. T-Chrome is now available as an optional finish on any of our steel 1911s (not available on aluminum models). With a T-Chrome finish, all the rounds are matte chromed along with the mag catch and lock, grip screws, ambi safety, beavertail, mainspring housing, hammer and sear pins. The flats on the slide are blued along with the sights for a very aesthetically exciting look.

FINISHING AND REFINISHING (Prices are for pistols only which are received in like-new condition and clean.)

- New T-Chrome Finish (chrome rounds, blue flats)\$325.00
- Reblue Complete Gun\$160.00
- Reblue Slide Only 90.00
- Reblue Frame Only (with parts) 125.00
- Brushed Hard Chrome, Complete Gun300.00
- Brushed Hard Chrome, Slide Only 150.00
- Brushed Hard Chrome, Frame Only (with parts)220.00
- Bead Blasted Hard Chrome, Complete Gun300.00
- Bead Blasted Hard Chrome, Slide Only 150.00
- Bead Blasted Hard Chrome, Frame Only (with parts)220.00
- DuPont S Coating, Complete Gun 310.00
- DuPont S Coating, Upper Slide Assembly170.00
- DuPont S Coating, Lower 1911 Frame Assembly190.00

LES BAER CUSTOM RIFLES

THE WORLD'S BEST SEMI-AUTOS AND MORE



"We fired 30 consecutive 5-shot groups at 100 yards... the average of all 30 groups was 0.475 inches."
Dave Anderson
Guns Magazine,
June 2001

When we decided to build our own line of AR rifles, we knew they couldn't be like everyone else's. So, from the beginning, our AR rifles have featured the very best parts available anywhere, many of them forged for toughness and precision machined on our own CNC horizontal machining centers and broaching machines. They're all custom built with painstaking care and they perform like no other AR on the planet.

**LES BAER
CUSTOM, INC.**
*Performance.
It's everything.*



"Les Baer's AR .223 rifles are guaranteed to shoot 1/2 MOA groups. They do. No brag, just fact."

Layne Simpson
Shooting Times
Autoloaders Buyer's
Guide 2001



AR .223
Super Varmint
Model

Les Baer Custom AR .223 Super Varmint Model

(Scope and rings optional)

"The (Les Baer) Super Varmint rifle is accurate enough to make most bolt action rifles run and hide."

Dave Anderson
Guns Magazine,
June 2001

The flagship model of our AR rifle line is built with the same care and precision as a custom bolt action rifle. It's as dependable as any rifle built and it's accurate enough to be a trusted companion on any excursion for prairie dogs, woodchucks or coyotes at long range. It's so good, it makes the tough shots look easy. We'll guarantee that our Super Varmint Model will shoot 1/2 MOA groups! Included with each gun is a target with two five-shot groups shot at 100 yards. It's built from best AR parts and accessories in the world, including:

- LBC Forged and Precision Machined Upper & Lower Receivers (available with or without forward assist upper)
- Picatinny Style Flat Top Rail
- LBC National Match Carrier (chromed)
- LBC Bolt (chromed)
- LBC Extractor (chromed)
- Geissele Two-Stage Trigger Group (truly spectacular)
- LBC Precision Machined Adjustable Free Float Handguard With Locking Ring
- LBC Aluminum Gas Block With Picatinny Rail Top
- LBC Bench Rest 416 R Stainless Steel Barrel With Precision Cut Rifling (1X9 Twist Standard, Optional Twists Available Including 1X12, 1X8, 1X7) 20" Length Standard (18", 22" and 24" Optional)
- Newly Designed LBC Custom Grip With Extra Material Under the Trigger Guard Corner
- Versa Pod Installed
- (1) 20-round magazine
- LBC AR .223 Rifle Soft Case
- Dupont S Coating On Upper, Lower And Small Parts
- Stainless Steel Barrel, coated on request.

The fit, finish and performance of this precision rifle will please any lover of fine rifles, and the superior accuracy will put it in a class with many bolt guns. With a guaranteed 1/2" M.O.A. and a price well below the \$3000-plus you might expect to pay for such an extraordinary piece of equipment, the Les Baer Super Varmint model is almost sure to change the whole AR market. In addition to hunting, the Les Baer AR .223 Super Varmint Model is also an excellent choice for SWAT units and other law enforcement teams requiring absolute accuracy.

"This semiautomatic carbine (Les Baer Custom AR .223 M4) will change the minds of traditionalists who think modern guns aren't built as well as the old classics."

Sheriff Jim Wilson
Shooting Times Magazine, November, 2001

"Sometime in the not too distant future a benchrest shooter with an AR-15-type rifle will win a big benchrest match. I won't be surprised if that rifle is built by Les Baer Custom."

Layne Simpson
Shooting Times Autoloaders
Buyer's Guide 2001



Les Baer Custom AR .223 Super Match Model

(Scope and rings options)

Like our Super Varmint Model, our AR .223 Super Match Model is built with the same care and precision as a super-accurate bolt action bench rest rifle...but it's semi-auto! We guarantee 1/2 MOA groups on this superior target rifle. Features include:

- LBC Forged and Precision Machined Upper & Lower Receivers (available with or without forward assist upper)
- Picatinny Style Flat Top Rail
- LBC National Match Carrier (chromed)
- LBC Bolt (chromed)
- LBC Extractor (chromed)
- Geissele Two-Stage Trigger Group
- Four-Position Free Float Handguard With Integral Picatinny Rail System
- LBC Aluminum Gas Block
- LBC Bench Rest 416 R Stainless Steel Barrel With Precision Cut Rifling (1X9 Twist Standard, Optional Twists Available including 1X12, 1X8, 1X7) 20" Length Standard (18", 22" and 24" Optional)
- Newly Designed LBC Custom Grip With Extra Material Under the Trigger Guard Corner
- Versa Pod Installed
- (1) 20-round magazine
- LBC AR .223 Rifle Soft Case
- Dupont S Coating On Upper, Lower And Small Parts
- Stainless Steel Barrel, coated on request.



Les Baer Custom AR .223 M4 Flattop Model

(Civilian Model)

(Scope and rings optional)

"This amazing rifle is about to rock your universe."

Dave Anderson
Guns Magazine,
June 2001

With the introduction of our M4 flattop, the market for superior quality tactical and defense firearms has just been turned upside-down! The AR .223 M4 civilian model is intended for the defense minded individual who demands uncompromising performance. It's perfectly suited to a home defense role. Many different scopes, sights and lights can be mounted on this versatile firearm. This is the finest civilian tactical rifle on the market and it's guaranteed to shoot 1/2" MOA! Included with each gun is a target with two five-shot groups shot at 100 yards.

Our Civilian M4 model includes these great features:

- LBC Forged And Precision Machined Upper & Lower Receivers (available with or without forward assist upper)
- Picatinny Style Flat Top Rail
- LBC National Match Carrier (Chromed)
- LBC Bolt (Chromed)
- LBC Extractor (chromed)
- Geissele Two-Stage Trigger Group
- LBC Bench Rest 416 R Stainless Steel Barrel With Precision Cut Rifling (1X9 Twist Standard, Optional Twists Available Including 1X12 or 1X8) 16" Length Standard
- Four-Position Free Float Handguard With Locking Ring And With Integral Picatinny Rail System (12" Long Standard) With Aluminum Gas Block Covered By Rail System
- Versa-Pod installed
- (1) 20-round magazine
- LBC AR .223 Rifle Soft Case
- Dupont S Coating On Upper, Lower And Free Float System Parts
- Stainless Steel Barrel, coated on request.

The AR.223 M4 Flattop Model is perfectly suited for defense, SWAT units and various law enforcement applications.



AR .223
M4 Flattop
LE Model

**Les Baer Custom AR .223 M4
Flattop Model** (Law Enforcement Model) (Scope and rings optional)

In the Law Enforcement, superior reliability and accuracy are absolute priorities. Our M4 Law Enforcement model fits the uncompromising performance requirements of virtually any law enforcement agency. A wide variety of different scopes, sights, lights and other accessories, can be easily mounted to this precision law enforcement firearm. Our M4 Law Enforcement model is guaranteed to shoot 1/2" MOA! Included with each gun is a target with two five-shot groups shot at 100 yards.

Our M4 Law Enforcement model includes these great features:

- LBC Forged And Precision Machined Upper & Lower Receivers (available with or without forward assist upper)
- Picatinny Style Flat Top Rail
- LBC National Match Carrier (Chromed)
- LBC Bolt (Chromed)
- LBC Extractor (chromed)
- LBC Bench Rest 416 R Stainless Steel Barrel With Precision Cut Rifling (1X9 Twist Standard, Optional Twists Available Including 1X12 or 1X8) 16" Length Standard
- Geissele Two-Stage Trigger Standard
- Optional Length Also Available For Law Enforcement
- Four-Position Free Float Handguard With Locking Ring And With Integral Picatinny Rail System (12" Long Standard) With Aluminum Gas Block Covered By Rail System
- Four-position collapsible stock
- Versa-Pod installed
- (1) 20-round magazine
- LBC AR .223 Rifle Soft Case
- Dupont S Coating On Upper, Lower And Free Float System Parts
- Stainless Steel Barrel, coated on request.



(Scope and rings optional)

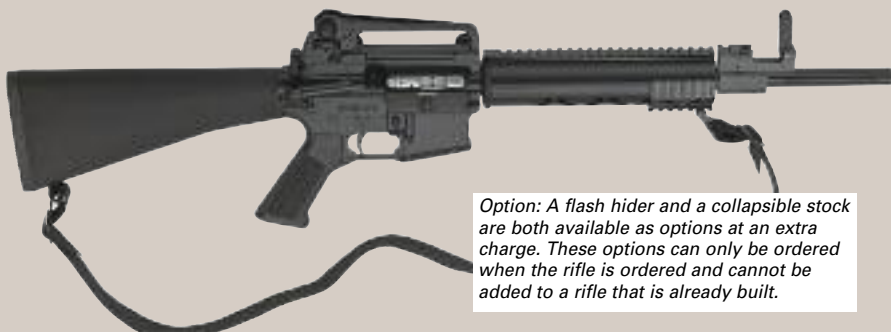
**Les Baer Custom
AR .223 IPSC Action
Model**

Our IPSC Action Model is an outstanding competition model with all the best features including a unique integral compensator which totally eliminates the unattractive, permanently mounted muzzle breaks used by most other companies. Not only is our integrated compensator the cleanest looking unit on the market, it's also the most effective, almost completely eliminating recoil and muzzle rise. Our IPSC model is guaranteed to shoot 1/2" MOA! Included with each gun is a target with two five-shot groups shot at 100 yards. It's exactly what you need to make you more competitive in the fast paced environment of an IPSC rifle match. Features include:

- LBC Forged And Precision Machined Upper & Lower Receivers With Or Without Provision For Forward Assist
- Picatinny Style Flat Top Rail
- LBC National Match Carrier (Chromed)
- LBC Bolt (Chromed)
- LBC Extractor (Chromed)
- LBC Bench Rest 416 R Stainless Steel Barrel With Precision Cut Rifling (1X9 Twist Standard, Optional Twists Available Including 1X12, 1X8, 1X7) 20" Length Standard
- Geissele Two-Stage Trigger Group (Single Stage Trigger Substituted On Request)
- LBC Precision Machined Aluminum Free Floating Handguard With Locking Ring
- LBC Aluminum Gas Block
- Versa-Pod installed
- (1) 20-round magazine
- LBC AR .223 Rifle Soft Case
- Dupont S Coating On Upper And Lower For All Weather Finish.

"Made with utmost attention to quality and detail, the Super Varmint AR from Les Baer may be an evolutionary advance in the development of varmint rifles."
Dave Anderson
Guns Magazine, June 2001

NEW! Les Baer Custom Special Tactical Rifle, .223/5.56 NATO



Option: A flash hider and a collapsible stock are both available as options at an extra charge. These options can only be ordered when the rifle is ordered and cannot be added to a rifle that is already built.

For personal and property defense in rural areas or for police use in patrol vehicles, this is the .223 rifle that you'll be seeing, because it will flat out-perform anything that has ever been built. As with all our AR .223 rifles, we guarantee this rifle to shoot 1/2 MOA groups. Total weight: 7 lb, 6 oz. Features include:

- LBC Forged And Precision Machined Upper & Lower Receivers • Picatinny Style Flat Top Rail • LBC National Match Carrier (Chromed) • LBC Bolt (Chromed) • LBC Extractor • Les Baer Custom Bench Rest 16" Barrel, 416 R Stainless Steel, Precision Cut Bench Rest Rifling, 1X8 Twist • Barrel Is Precision Fluted In Front Of Gas Block For Better Heat Dissipation • Geissele SSA Non-Adjustable Two-Stage Trigger Set At 4 1/2 Pound Pull • Special Free Float Handguard With Locking Ring • Sling Stud Mounted Front Of Free Float Handguard • Nylon Weather Proof Sling And Lockable Front Sling Swivel
- Special Detachable Carry Handle • Unique Sighting System (see full description below) • (2) 20-Round Magazines • LBC AR .223 Rifle Soft Case • DuPont S Coating On Upper, Lower, Free Float System, Barrel, Carry Handle, And Most Small Parts



The Most Innovative And Accurate AR .223 Sighting And Carry Handle System On The Market Includes:
LBC Rear Sight, National Match With 1/4 Minute Of Elevation And 1/4 Minute Of

Windage • Flip Rear Sight Has One Large .198 Aperture And One Smaller Screw-In .100 Aperture That Can Be Removed (different screw-in apertures with different size holes are available) • Gas Block And Fold Down Front Sight Are State-Of-The-Art • Front Sight Folds Back And Locks In; By Pushing The Release Pin On The Side Of The Sight, The Spring-Loaded Front Sight Springs Up Into Place • Front Sight Also Folds Down Towards The Rear And Locks Into Place If You Choose To Mount A Scope Or Other Optic On The Flattop Upper, Thereby removing The Front Sight From Your Field Of View • Front Sight Includes A Bright Tritium Insert From Trijicon For Highest Visibility In Low Light Conditions • The Carry Handle Is Detachable And It Can Be Removed, Then Reattached And The Rifle Will Still Shoot Within 1/2 Inch At One-Hundred Yards Of Its Original Point Of Aim

When our agency was looking for a new semi-auto precision rifle for special applications/S.W.A.T. Operations, your AR caught our attention. Over a year ago we were able to requisition two of these rifles for our Special Weapons and Tactics Team. Since that time these rifles have been tested in various training and operationally in the field. These 16" heavy barreled .223 cal. Rifles topped with Leupold MK4 6.5x20x50 mm tactical scopes and utilizing Federal match ammunition have demonstrated remarkable accuracy and, just as importantly, have proven totally reliable. They have consistently outperformed high quality, purpose built, bolt action police sniper rifles."



SGT. K.S. Armstrong
Training Officer
Special Weapons and Tactics
Gilmer County Sheriff's Office, Georgia



AR .204 Ruger
Super Varmint
Model



AR .204 Ruger
Super Match
Model

*Shown with optional
scope & rings.*

Les Baer Custom Ultimate In .204 Ruger!

Les Baer Custom is proud to offer the very first AR style rifles chambered for the hot new .204 Ruger cartridge.

The astonishing .204 Ruger is a blazing fast screamer with the 32 grain bullet measured in our 24" barrels at 4250 F.P.S.! Together with its inherent accuracy...and the uncanny accuracy of our own AR rifles... that extremely high velocity makes the .204 Ruger a fantastic choice for varmint hunting, particularly at ranges under 500 yards.

The .204 Ruger is offered as an optional caliber in our AR Super Varmint model and Super Match model. Both models come equipped with our own LBC Bench Rest 416-R series stainless steel barrels in either 24" or 26" length. Our barrels feature precision cut rifling using our own bore diameter, lands and grooves and very special chambering. Like all Les Baer AR rifles, our .204 Ruger models come with our five-shot accuracy guarantee of 1/2 MOA or less.

Note: Because of the taper on .204 Ruger cases, the .204 Ruger 20-round magazines will actually only hold 5 rounds per magazine. Do not attempt to force more than 5 rounds in the 20-round magazines.

**Now on A-2 Upper With
Pinned Rear Sight**



**Les Baer Custom
CMP Competition
Rifle**

**CMP-Legal For Service
Rifle Matches**

Whether you're shooting a local service rifle match at your own club or at the National Championships at Camp Perry, Ohio, Les Baer Custom's newest AR .223 rifle is guaranteed to generate "ooo's" and "ah-h-h's" when the pullers in the pits start pasting those X-ring hits. This really is the CMP rifle to which all others will be compared. Like all our custom built AR style rifles, this rifle is guaranteed to shoot groups of 1/2 MOA or better (ten-shot groups) and a target is included. Features include:

- LBC Forged And Precision Machined Upper And Lower Receivers
- NM Rear Sights With Hooded Aperture
- 1/4 Minute Clicks Both Windage And Elevation
- LBC National Match Carrier (Chromed)
- LBC Bolt Carrier
- LBC Extractor
- 20" LBC Precision Cut Bench Rest Style 416 R Stainless Steel Barrel, 1X8 Twist
- Geissele Two-Stage Trigger Set At 4 1/2 lbs
- Special DCM/CMP Style Free Float Tube
- Precision Machined Front Sight Housing (Drilled And Tapped For Barrel Clamping)
- Lead Weight In Both Stock And Forend (total Weight Is 17 lbs with lead added)
- (2) 20-round magazines
- Dupont S Coating On Upper, Lower And Most Small Parts.

"...the rifle (Les Baer Super Varmint) is most definitely capable of shooting five shots inside a half inch at 100 yards on a consistent basis."

**Layne Simpson
Shooting Times
Autoloaders Buyer's
Guide 2001**





Les Baer Custom NRA Match Rifle

Guaranteed 1/2" MOA

We have taken NRA match rifles to a different level by introducing real one-piece construction to the 30" barrel instead of using sleeves and adapters to extend the sighting radius so there are no more adapters for the front sights. With our rifle, the sleeve is an integral piece of the barrel. We start with our incomparable Bench Rest Stainless Steel Barrel in a 1X8 twist. Then, with special tooling, we machine out the "tube" for 24" of rifling and the crown is inside the integral tube. Dimensions: Overall barrel length - 30"; Diameter of the integral tube - .922"; Wall thickness of integral tube - approx .085. Sights: RM-1 Rear Sight; M-3LR Flat Top Base; 530 Geheman Iris w/Magnification; LF 922 Adjustable Front Sight Base And Anschutz Globe Front Sight W/Aperture). Included with each gun is a target with two 5-shot groups shot at 100 yards.

Our NRA Match Rifle includes these great features:

- LBC Forged and Precision Machined Upper & Lower (available with or without forward assist upper)
- Picatinny Style Flat Top Rail • LBC National Match Carrier (chromed) • LBC Bolt (chromed) • LBC Extractor (chromed) • Geissele Two-Stage Trigger Group • LBC Precision Machined Adjustable Free Float Handguard with Locking Ring • Hand Stop with Sling Swivel • LBC Aluminum Gas Block • LBC Bench Rest 416 R Stainless Steel Barrel With Precision Cut Rifling (1X8 Twist Standard, Optional Twists Available Including 1 X7) 30" Length Standard • Newly Designed LBC Custom Grip with Extra Material Under the Trigger Guard • LBC AR .223 Rifle Soft Case
- (1) 20-round Magazine • Dupont S Coating on Upper, Lower and Small Parts



"The first time I tried a LesBaer (AR) I knew I was using the BEST Service Rifle out there. Thanks, Les."

Shawn MCKenna

496-19X out of 500-50X,

**National Trophy Match at Camp Perry, Ohio
Highest Civilian Score Since 1918**

Exclusively From Les Baer Custom...

.264 LBC-AR™

**The New Caliber With
Downrange Ballistics That Will
Simply Knock You Out Plus The
Rifles And Ammo That Will Help
You Get The Best Performance.**

The new .264 LBC-AR™ is one of the few new calibers to come along in a very long time that won't leave you groaning about ... "Oh, not another one!". So you know it's got to be an incredible performer. At 100 to 900 yards and using our own factory loads in one of our AR rifles, we have shot sub-1/2 MOA groups all day long. So the .264 LBC-AR™ is not only super accurate, **it's consistently accurate!** Much of that accuracy, of course, is due to the rifles, because the rifles we're building to accommodate this exciting new caliber are built with the same precision cut bench rest barrels and all the other accuracy enhancements that have made our .223 and .204 Ruger rifles the acknowledged performance leaders.

But it's also about the ammunition. To ensure the high level of performance of the .264 LBC-AR™, we have entered an agreement with our friends at Hornady to provide us with their superior quality brass and the reloading dies for our new caliber. And the factory loads we're offering are being custom loaded by Black Hills Ammunition using that very excellent Hornady brass and dies.

And that's the innovative way to guarantee top performance.

**New Hornady Reloading Dies for
.264 LBC-AR™.**



Exclusive! .264 LBC-AR™ Custom Ammunition And Components

Whether you choose to shoot factory ammo or load your own, your ammunition needs for .264 LBC-AR™ can be satisfied at the same place that created the caliber and also manufactures the first firearms chambered for it. By providing everything you need, we can better ensure the integrity and continuity of the new caliber as well as guaranteeing the most accurate and dependable performance possible. We think you'll appreciate that.



The available loads from Black Hills Ammunition are:

- 123 gr. Sierra Match King
- 123 gr. Hornady A-Max

Both these high performance loads are sold exclusively through Les Baer Custom.



New! Super Varmint Model .264 LBC-AR™

Shown with optional scope and rings.

The Super Varmint Model in .264 LBC-AR™ is virtually identical to the Super Varmint Model in .223 which is still the flagship of our AR line. The features include the same amazing Les Baer Custom bench rest barrels that shoot absolutely lights out. Each rifle comes with two (2) 14-round magazines.

We guarantee performance of ½ MOA or less.



New! M4 Flattop Model w/16" Medium Weight Barrel .264 LBC-AR™

Shown with optional scope and rings.

Our popular civilian model M4 is now available in the super accurate .264 LBC-AR™ caliber. Each rifle comes with a 16" medium weight barrel with a 1 X 8 twist, a .750 gas block with Picatinny rail, a 9" four-way handguard with locking ring and integral Picatinny rail system, and a VersaPod installed. Also included is an LBC soft rifle case and DuPont S Coating on the upper, lower and free float handguard with the barrel coated on request. Two (2) fourteen-round magazines are also included.

We guarantee performance of ½ MOA or less.

From Les Baer Custom...

6 X 45 Caliber **A Modification Of The 5.56** **For Superior Down** **Range Performance**



Who would have thought that simply necking up a .223/5.56 case to 6mm could have made such a huge difference in performance?

Les Baer tested this dynamic new caliber until he proved to his own satisfaction that 6 X 45 is a logical (and in many cases a much better) alternative to the traditional .223. The ballistics and the performance are phenomenal!

The barrels for the Les Baer rifles chambered for this new caliber will be available in either a 1 X 8 twist for 100 grain bullets and up, or a 1 X 9.5 twist for bullets weighing less than 100 grains. All rifles will come with two magazines, but all magazines and other parts for AR .223 rifles will interchange with rifles chambered in the new 6 X 45 caliber!



Super Varmint Model
6 X 45

All features exactly the same as our Super Varmint Model in .223 but chambered for 6 X 45. Shown here with optional Nightforce scope.



M4 Flattop Model
6 X 45

Identical to our M4 flattop .223 model but chambered for the new cartridge. Shown here with optional Nightforce scope.



*Kai and her wild boar
shot with a Les Baer AR.*

6 X 45 Ammunition

Thanks to our friends from Black Hills Ammunition, Les Baer Custom is able to offer you three carefully developed and custom loaded factory ammunition choices.

The loads will feature:

- 100 grain bullet
- 85 grain bullet
- 62 grain bullet

New! Les Baer .308 Semi-Auto Match And Sniper Rifles



The .308 Cal. AR That's In A Class Of Its Own.



.308 Semi-Auto Match

Shown with standard stock and without scope or optional muzzle brake



.308 Semi-Auto Match

Shown with optional Magpul stock



.308 Semi-Auto Sniper

Shown with Magpul stock, Enforcer muzzle brake and optional scope with rings

The new .308 Semi-auto is built like all Les Baer rifles.

It's a true custom rifle that's hand built for a perfect fit, unmatched accuracy and unchallenged reliability. Because Les Baer's rifles are all about quality parts and thoughtful extra touches, both the upper and lower receiver are made from premium 7075-T6-51 billet aluminum and completely precision machined. The lower also includes a trigger guard that's machined in. Les Baer's obsession with quality and attention to detail are immediately apparent, due in large part to the LBC bench rest 416R stainless steel barrel with cut rifling, a feature that has become a hallmark of all Les Baer Custom rifles. Several models are available, all featuring:

- Upper And Lower Precision Machined From 7075-T6-51 Premium Billet Material
- No Forward Assist
- Picatinny Style Flat Top Rail
- LBC Carrier, Chromed
- LBC Precision Bolt, Chromed
- LBC Precision Extractor, Chromed
- Geissele Two Stage Trigger Group
- LBC Steel Gas Block with Picatinny Rail On Top
- LBC Precision Machined Free Float Handguard With Lock Ring
- LBC Bench Rest 416R Stainless Steel Barrel With Precision Cut Rifling, 1 X 10 Twist, 24" Long
- LBC Custom Grip With Extra Material Under The Trigger Guard
- Integral Trigger Guard Is Bowed On The Bottom To Allow Wearing Gloves
- Harris Bipod
- Two (2) Twenty Round Magpul Magazines
- LBC Soft Rifle Case With Pouches
- DuPont S Coating On Barrel



Top and bottom inset photos courtesy of Rico Visuals

Options: 20" or 18" Barrel

Enforcer Muzzle Brake (reduces recoil to just slightly more than .223 level)

Magpul Stock

Guaranteed to shoot ½" MOA! Included with each gun is a target with two five-shot groups shot at 100 yards.

New! Les Baer MONOLITH .308 Semi-Auto SWAT Model



Shown with optional
scope & rings.

Unique One-Piece Upper/Rail System Makes It The Most Stable Mounting System Anywhere.

A sniper needs to be confident that his scope isn't going to move once it's adjusted... even on repeated follow-up shots. With the MIL-STD 1913 Picatinny rail system integrated into the upper receiver, the upper and mounting system on this smoking new .308 become a rock solid one-piece unit. And, since the upper and the lower are already precision machined from 7075-T6-51 and hand fit so they fit like a single unit, the scope isn't going anywhere. Like Les Baer's .308 Ultimate Match and .308 Ultimate Sniper rifles, the Monolith SWAT model includes these features:

No forward assist • LBC Carrier, Chromed • LBC Precision Bolt, Chromed • LBC Precision Extractor, Chromed • Geissele Two Stage Trigger Group • LBC Steel Gas Block With Picatinny Rail On Top • LBC Bench Rest 416R Stainless Steel 20" Barrel with Precision Cut Rifling, 1 X 10 Twist • Magpul PRS™ Stock • Special Versa Pod And Adapter • LBC Custom Grip with Extra Material Under The Trigger Guard • Integral Trigger Guard Is Bowed On The Bottom To Allow Wearing Gloves • Two (2) Twenty Round Magpul Magazines • LBC Soft Rifle Case With Pouches • DuPont S Coating On Barrel

Options: 18" or 24" barrel

Guaranteed to shoot ½" MOA! Included with each gun is a target with two five-shot groups shot at 100 yards.

"Les Baer's .308 Semi-Auto Match Rifle was specifically designed with the police sniper in mind and is destined to save innocent lives. The rifle was built to withstand the hard knocks it's bound to endure at the hands of the lucky sniper to whom it's assigned."

Richard Nance
Guns & Ammo Magazine

New! Les Baer Mid-Length MONOLITH .308 Semi-Auto SWAT Model



*Shown with optional
scope & rings.*

The Same Ultra Stable One-Piece Upper/Rail System As Our Original MONOLITH SWAT Model But With A Slightly Shorter 16" Barrel.

So you don't need a full length barrel but you do want an accurate AR rifle with the most stable scope platform available? Great news! The new Mid-Length MONOLITH SWAT Model is made just for you. It still includes all the superior features of our original MONOLITH SWAT rifle...including the unique one-piece upper/rail mounting system... but we have substituted a slightly shorter 16" Bench Rest quality barrel for the 20" barrel that comes standard on the original model. It's a perfect choice for the tactical officer who might be called upon to handle either entry work or longer range shooting assignments.

No forward assist • LBC Carrier, Chromed • LBC Precision Bolt, Chromed • LBC Precision Extractor, Chromed • Geissele Two Stage Trigger Group • LBC Steel Gas Block With Picatinny Rail On Top • LBC Bench Rest 416R Stainless Steel 16" Barrel with Precision Cut Rifling, 1 X 10 Twist • Magpul PRS™ Stock • Special Versa Pod And Adapter • LBC Custom Grip with Extra Material Under The Trigger Guard • Integral Trigger Guard Is Bowed On The Bottom To Allow Wearing Gloves • Two (2) Twenty Round Magpul Magazines • LBC Soft Rifle Case With Pouches • DuPont S Coating On Barrel



"POLICE SPECIAL" 5.56/.223

Nobody could have predicted the success of Les Baer Custom's Police Special, the special 16" AR that was designed to include every important feature a police officer wants but none of the stuff he doesn't. Nobody but Les Baer who knew there was a need for a high performance rifle that could serve as either a patrol carbine or a high energy tactical rifle. For 2012, Les has sweetened the pot even a little more by adding a few additional high demand law enforcement features including a new LBC national match carrier, a six position M-4 style collapsible stock, and a very special LBC flip-up front sight.

As a patrol carbine or a high energy tactical rifle, the Les Baer Police Special is the new class of the law enforcement market. It's loaded with the thoughtful, businesslike features that make it a serious pro, and it's intentionally devoid of the amateur gee-gaws that cheapen the purpose and limit the usefulness of a police rifle for real police work.

Features include:

- LBC forged and machined upper and lower receiver • Removable carry handle with rear sight
- Picatinny flattop rail on upper • LBC National Match carrier, chromed • Precision bolt and extractor
- 16" precision button rifled steel barrel with 1 X 8 twist • LBC flip-up front sight • six position M-4 style collapsible stock • Special Picatinny 4-way handguard, free floated • Lockable sling swivel mounted on stud on 4-way handguard • 1" nylon sling • A2 style flash hider • Bead blast blue finish on steel parts • Anodized finish on aluminum parts • Timney Match trigger group • (2) 30-round magazines

Rifles are guaranteed to shoot 1" groups at 100 yards.



New! Enforcer Muzzle Brakes For Les Baer Custom .308 Semi-Auto Rifles

If you're interested in serious recoil reduction with no measurable reduction in accuracy, the Enforcer muzzle brake will amaze you. It's available for our precision rifles in caliber .308 only. In .308 Win, recoil is less than a .243 and equal to .223.

Note: The Enforcer Muzzle Brake must be installed when the rifle is ordered. It CANNOT be installed after the rifle is built.



Complete AR .223 M4
Upper Assembly,
with Four-Way Picatinny
Rail

Complete AR .223 Varmint Model Upper Assembly

The same superb upper assembly unit that we use to build our dynamic Varmint models. Comes complete with :

- LBC Forged and Precision Machined Upper Receiver (available with or without forward assist provision)
- Picatinny Style Flat Top Rail
- LBC National Match Carrier (chromed)
- LBC Bolt (chromed)
- LBC Extractor
- LBC Precision Machined Adjustable Free Float Handguard With Locking Ring
- LBC Aluminum Gas Block With Picatinny Rail Top
- LBC Bench Rest 416 R Stainless Steel Barrel With Precision Cut Rifling (1X9 Twist Standard, Optional Twists Available Including 1X12, 1X8, 1X7) 20" Length Standard (18", 22" and 24" Optional)
- Versa-Pod Installed
- Comes with target from (2) five-shot groups fired at 100 yards • Guaranteed to shoot 1/2 MOA!

Fitting might be required with most lowers.

NEW! From Les Baer Custom Complete AR .204 Ruger Uppers, Ready To Shoot

These uppers are field tested and come with a target. Note: Some fitting with your lower might be required.

Available as:

- .204 Super Varmint Complete Upper
- .204 Supermatch Complete Upper



LBC AR .223 Uppers, With Or Without Forward Assist

These superior quality flattop receivers could only come from Les Baer Custom. They're machined from 7075 T-6 forgings and machined to very precise tolerances. Carrier bores are all precision honed. They come with the popular Picatinny rail top and they're available with or without a provision for forward assist. Hard coat anodized. Four variations available:

- Flattop Upper With Forward Assist And Port Cover
- Flattop Upper With Provision For Forward Assist (Stripped)
- Flattop Upper Without Provision For Forward Assist, With Port Cover
- Flattop Upper Without Provision For Forward Assist (Stripped)

LBC AR .223 Lower Receivers

You've tried the rest, now try the best! Our AR style lower receiver is the best in the industry. It's precision machined from a 7075 T-6 forging and held to exacting tolerances. Every one is monographed to prevent warpage in the critical areas. Like our 1911 frames, these lowers are absolutely the best you'll ever find. This is a stripped receiver without parts. Hard coat anodized. FFL Required For Purchase!

LBC AR-.223 Lower Receiver With Geissele Two-Stage Trigger

Quality compliments quality. The same exquisite LBC lower used to build our Super Varmint model. The best quality complete lower assembly. Finished with DuPont S Coating. FFL Required For Purchase!



LBC Matched Uppers & Lower

As perfect as it gets. We'll machine each upper and lower as a matched set. We have even created special fixturing to hold them together while we're machining the pin holes. All matched sets are also specially numbered with matching numbers. Hard Coat Anodized. All sets delivered stripped and without parts except for the two pins to hold them together.



LBC Upper Forgings Only

These brand new forgings from Les Baer Custom have all the popular features of our complete uppers but without any forward assist. We have had many requests for uppers without the upper assist but with the flattop design, so...here you go. Les Baer Custom comes through again! It's just what you wanted!

LBC Lower Forgings Only

The same 7075 T-6 aluminum forgings used to make our lower receivers for all Les Baer AR .223 Rifles.



LBC AR .223 Rifle Soft Case

This is the same rifle case that we supply with our complete AR .223 rifles. It features four external pouches for carrying magazines, a heavy duty zipper, and it's completely padded to protect your rifle. One of the finest soft rifle cases on the market.



LBC National Match Bolt Carrier

Our LBC NM carriers are precision machined for excellent oil retention. They come with a tapered hammer ramp and they're a full ounce heavier than standard bolt carriers. Chrome plated inside and out. LBC Patent # 5,551,179.



LBC National Match Bolt Carrier

With Chromed Carrier Key Installed. LBC Patent #5,551,179.



Ultra Light National Match Carrier

LBC U.S. Patent # 5,551,179
Just the same as our standard National Match Carrier but slightly lighter in weight. Chromed. Note: Does not have provision for forward assist or port cover.





LBC Precision Complete Bolt Assembly

A complete precision bolt - the same one used in our AR .223 rifles. Includes LBC bolt, single gas ring, extractor, ejector, XP extractor spring, pins and springs. Available chromed or blued.



LBC Complete N.M. Carrier And Bolt Assembly

This complete assembly is the same one we use in our AR .223 rifles. Comes completely assembled and ready to install. Includes chromed cam pin. LBC Patent #5,551,179.



LBC Precision Bolts

These LBC bolts are unquestionably the best in the business. They're precision machined and either chrome plated or blued (your choice).



LBC Precision Chrome Plated Bolt Carrier Key

Available chromed (as shown) or Parkerized.



BLUED



CHROMED

LBC AR .223 Extractors

These superior extractors are precision machined to exacting tolerances from bar stock, then properly heat treated and shot peened. LBC extractors are available either chrome plated or blued.

McFarland Single Gas Rings

After thoroughly testing every gas ring on the market, we have determined that this gas ring is absolutely the best available for AR style bolts. Consequently, this is the only gas ring we use on all our AR .223 rifles and bolts.



LBC AR .223 Barrel Extensions

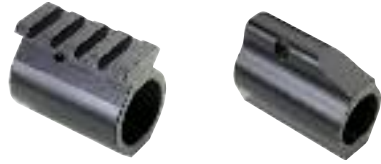
These hard to find barrel extensions are finally available from Les Baer Custom. They're precision made, completely machined, and ready to install. All critical surfaces are ground!



LBC Barrel Extension,
In The White

LBC Bull Barrel Gas Block, With Or Without Picatinny Rail Top

Machined from premium aluminum so they're extra strong. Anodized finish. Available in the following configurations:



- .938 Gas Block With Picatinny Rail Top
- .938 Gas Block Without Rail
- .750 Gas Block Without Rail



Gas Tube

These precision made gas tubes for AR-15 or M-16 type rifles are available three ways:

- Standard length
- M-4 length
- Extended M-4 length (2" longer).

Les Baer Custom uses the extended M-4 length tubes to reduce the pressure spike on our M-4 style barrels.

NEW! Magpul PRS™ Stock For Les Baer Semi-Auto Rifles

These Magpul adjustable stocks are intended for sniper rifles but they're available for any of our precision semi-autos. Not only are they extremely comfortable, but they also feature easy, tool-less adjustments for both length of pull and cheek piece height.



A-2 Buttstock

Precision made A-2 style buttstock. No buttplate or other parts.



A-2 Buttstock, Complete Assembly

(no trap door on buttplate)
LBC now offers a complete A-2 buttstock assembly without the trapdoor or the buttplate. Comes complete with receiver extension, buffer, both buttplate screws, rear sling swivel and action spring.



AR Style Buttplate

AR style buttplate without the hole for the trap door assembly. A nice addition to any AR style rifle.



LBC Standard Style



LBC AR Grip



LBC Soft Style Finger Groove Grip



AR Style Pistol Grips

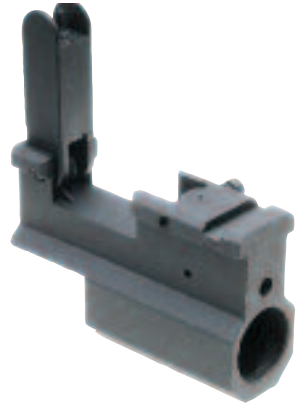
Les Baer Custom offers three different quality-made pistol grips for your AR style rifle:

- LBC Standard Style AR Grip
- LBC AR Grip With Extended Material Under The Trigger Guard
- LBC Soft Style Finger Groove Grip (available in either Ambidextrous model or Right Hand-Only model)

New! For AR-Style Rifles

Les Baer Custom Fold Down Front Sight System

Made from aircraft grade aluminum, this gas block and fold down front sight system is absolutely state of the art. It's completely self contained for rapid fold down and rapid readiness. The system is perfect for all flattop style ARs. Two sizes available: one fits .750 barrels at the gas block area, the other fits .938 barrels at the gas block area. The fold down front sight system is perfect for both duty and defensive use. The flip-down bar folds down and locks into place, then can be ready to use with the push of a side release mechanism. The flip-up housing holds the front sight and is adjustable for elevation. (An elevation tool is supplied.) The real beauty of this fold down front arm is that it's spring loaded, so if you knock your front sight into something, it folds down, then springs up again in a "ready" position without suffering damage. This system is perfect for anyone who chooses to mount an optic on a flattop upper. To accommodate that, the carry handle is removable and the front sight arm folds down to remove obstructions from your field of view. The carry handle is easy to re-attach after you remove your optic. Comes hard coat anodized with adjustable front sight post installed. Also includes front sight adjustment tool. (Note: When sold as an aftermarket item to attach to an existing AR rifle, this system DOES NOT include a tritium insert.)



Tactical Latch

This extended latch replaces the standard style charging handle latch and allows for easier access with either hand.



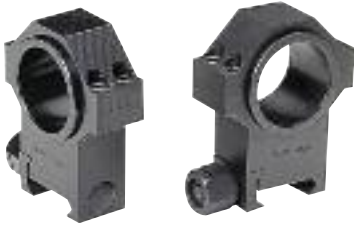
Geissele Two-Stage Trigger Group

This is the very finest two-stage trigger for AR type rifles and it's spectacular! It's very precise and fully adjustable. It's the same trigger group we install as standard equipment on our AR.



LBC Precision EDM Scope Rings For Flattop AR Rifles 1.270 Height

Imagine using the very same rings for both a 1" and a 30mm scope! Now you can. These precision rings are EDM cut from 4140 barstock. They feature a precision insert which is perfectly aligned for 1" scopes. By removing the inserts, you're ready to mount a 30mm scope on your flattop AR! Heat treated and EDM cut to exacting tolerances. 1.270" height rings are the perfect position for a scope mounted to a flattop AR with Picatinny rail cuts.



LBC Precision EDM Scope Rings For Flattop AR Rifles 1.500 Height

1.500 height identical to the EDM scope rings described above but they stand a little higher to afford more clearance.



Versa-Pod

This is absolutely the most "trick" bipod available for an AR style rifle because, as the name suggests, it gives you more versatility than any other product on the market. It's standard equipment on our AR .223 Super Varmint model. The unit fits most free float handguards and it features adjustable front legs that can be easily folded to the front. There's also a quick-detachable feature for the legs and a sling swivel on the main base. An excellent choice for varmint hunting or tactical use.

Long Adjustable Legs For Versa-Pod (Sold as add-ons only)

Perfect for sitting as opposed to prone shooting. These legs extend from 15 1/2" to 24" in 1/2 increments.

Versa-Pod For Our Four-Position Free Float Handguard

Locks into place on the rails and can be moved along the length of our four-way rail. Comes with legs that extend from 8" to 12". Includes palm rest and swivel.

Versa-Pod Vertical Grip For Picatinny Rails

This new version vertical grip for the Picatinny rail system fits our four-way handguards perfectly. You can slide this mount anywhere on our four-way rail system. You can also mount the Versa-Pod adjustable legs on the front of the vertical grip. The possibilities are endless with this extremely functional and flexible new system.



Four-Position Free Float Handguard With Integral Picatinny Rail System

This brand new design is the latest state-of-the-art development for either full length or M4 AR style rifles from Les Baer Custom. Like our Free Float Handguard, this new system has its own barrel nut and locking ring which replaces the standard barrel nut and Delta ring system, and the special locking ring also allows for infinite adjustment. But, here's the exciting part: The integral four-position Picatinny rail system has four rails 90 degrees apart from each other and the top rail butts up very close to the upper receiver. So, when the system is installed, it allows the flattop of the upper to extend out from 7" to 15" from the front of the upper. Then it's possible to select either the 12:00, 3:00, 6:00 or 9:00 position. Many accessories can easily be attached to this unique system - sights, scopes, lights, even a Versa-Pod. And, because this is a free float system, it places absolutely no stress on the barrel. In front of our M4 carbines we use a special aluminum gas block and the free float system fits over the gas block. This new free float handguard system really is the ultimate in versatility and an ideal choice for tactical use. Available in 7", 8 1/2", 10", 11", 12", 13", 14", 15" or 16" lengths. Comes black anodized. In addition to our M4 models, this system can also be installed on our Super Varmint model rifle or our IPSC Action model rifle.



LBC Picatinny Rail Adaptor For Our Four-Position Free Float Handguard

This adaptor fits our four-position free float handguard with Picatinny rail cuts. It's compact and it also fits the Versa-Pod legs. (Legs sold separately, or use your own Versa-Pod legs.) Made from 4140 so it's extremely durable.



Versa-Pod Picatinny Rail Adaptor For Our Four-Position Free Float Handguard

We have had many requests to sell this adaptor separately. It comes with a palm rest and sling swivel. Fully adjustable on four-way free float handguards. (Legs sold separately, or use your own Versa-Pod legs.)



Flat Top Picatinny Rail Adaptor

This adaptor has many uses on an AR style rifle, including raising your line of sight 1/2" to clear free float handguards. It can also be used to move scopes forward or backward on flat top AR's. Huge clamping surface. Fits Picatinny rail cuts. Precision made of 4140 and fully EDM cut.

Palm Rest For NRA Style Match Rifles

Designed for round free float handguards. Includes removable sling swivel.



Nightforce Scopes

Les Baer Custom is now offering Nightforce Scopes as an option with all Les Baer Custom AR rifles. Nightforce Scopes are among the most technologically advanced optics in the world with mechanical designs, special features and rigorous production procedures that are unparalleled in the optics industry. Specialized models are available for various types of hunting, benchrest shooting, silhouette competition and tactical use. Low light and ultra long range models are both available. Contact Les Baer Custom for information on individual models.



**LBC Bench Rest 416-R Series Stainless Steel Match Barrels
(Precision Cut Rifling) .223**

Unbelievable! Les Baer Custom has once again risen to a new level of unmatched performance. We now offer the finest cut barrel on the market. We start with 416-R blanks. Then, every barrel is air gauged and internally finished by a special process. The precision cutting of the lands and grooves virtually eliminates stress in the barrel. Barrels are righthand twist, five-groove, available in either 1 X 12, 1 X 9, 1 X 8 or 1 X 7 twists. Available in the following lengths:

• As a 16", 18", 20", 22" or 24" bull barrel (fits .938 gas block), chambered, crowned, with barrel extension installed and gas port hole drilled.

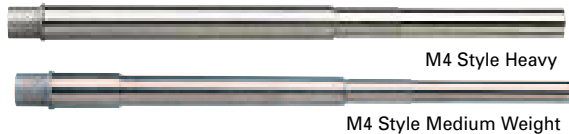
NEW! LBC .308 Semi-Auto Barrels

The same LBC Bench Rest barrels that we sell in other popular calibers are now available in .308. They're precision cut, 1 X 10 twist, and available in 18", 20" or 24" length.

**NEW! .264 LBC-AR™ And 6 X 45 Barrels
(Precision Cut Stainless Steel Barrels)**

These Precision cut 416-R barrels are the same bench rest barrels we use on our custom built AR style rifles. In .264 LBC-AR™, the barrels are available in 16", 20" or 24" length, 1 X 8 twist only. 6 X 45 barrels are available in 16", 20" or 24" and in 1 X 8 twist (recommended for 100 grain bullets or bigger) and 1 X 9.5 twist (for smaller than 100 grain bullets).

**NEW! LBC .204
Ruger AR-Style
Match Stainless
Barrels**



The same amazing bench rest-quality .223 barrels that we use on our own half-MOA rifles are now available in .204 Ruger. Available in Varmint-style only, either 24" or 26" length, and in 1X10 twist. All other features are the same as the .223 barrels described above.



**LBC .223 Aluminum Free
Float Handguard**

This design features a special locking ring. It uses its own barrel nut and locking ring so it does away with the conventional barrel nut and Delta ring. Special locking ring allows for infinite adjustment for unbelievable precision. Precision machined from 7075 aluminum. Comes black anodized with barrel nut, lock ring and free float tube.

**LBC M4 Style Heavy And Medium Weight Match Barrels
(Precision Cut Rifling)**

The same superior quality as our precision cut match barrels described above, but designed specifically for M4 style rifles. Use of our extended M4 style gas blocks for use with .750 or .938 gas blocks for M4 style rifles. Use of our extended gas tube is also required. 16 1/4" length, available in either 1 X 12, 1 X 9, 1 X 8 or 1 X 7 twist, .223 Cal.

The same superior quality as our precision cut match barrels described above, but designed specifically for M4 style rifles. Use our extended M4 style gas blocks for use with .750 or .938 gas blocks for M4 style rifles. Use of our extended gas tube is also required. 16-1/4" length, available in either 1X12, 1X9, 1X8 or 1X7 twist. Use the medium weight barrel with .750 gas blocks and the heavy weight with .938 gas blocks.

Baer Custom Clothing To Help You Look Like A Pro.

Baer Custom T-Shirts

Three handsome styles, all with two-color silk screened graphics and all printed on heavy 7 oz. deluxe Anvil Cotton. Choose from:

- **Standard Short Sleeve T-Shirt**

Available in black or grey. Specify size when ordering.

- **Standard Long Sleeve T-Shirt (not pictured)**

Available in black only. Specify size when ordering.

- **3 Button Henleys, Long Sleeve and Short Sleeve, (not pictured)**

Grey only. specify size when ordering.

- **Baer Logo Sweatshirts**

Thick, grey or black logo sweatshirts. Specify sizes when ordering.

- **Black Hoodie Sweatshirts**

Black only. Specify sizes when ordering.

- **Gold Style Polo Shirts (not pictured)**

Embroidered logo on chest. Grey only. Specify sizes when ordering.



Baer Logo Patch

Multi-color 3-1/2" x 3-1/2" embroidered patch of the Les Baer Custom logo. Ready to apply to your shooting jacket or vest.



Baer Deluxe Hats

Grey with black bill. Features custom embroidery and six-panel construction. One size fits all.

Les Baer Custom Neon Sign, 27" X 35"

Les Baer's distinctive shooting/racing logo is now available in neon. Perfect for a gun shop, clubhouse, family room, gun room or "man cave".



Les Baer, Sr. A Legend In His Own Time

Les Baer, Sr. has been winning accolades and loyal supporters for more than a quarter century. Charles K. Strowd, Jr., is one of Les Baer's most dedicated supporters and an active collector of Baer 1911 pistols. As a labor of love, Charles undertook a project to tell the world about the Les Baer phenomenon. The result is a spectacular 6" x 8" collector edition book, magnificently illustrated with fabulous color photographs of Les and his products.

\$75.00

A Super Accurate Replica Of Les Baer's Authentic 1970 FORD MUSTANG BOSS 429

Only 500 Of These 1/25th Scale Classic Muscle Cars Are Available.



The original 429 Boss Mustangs were and still are a legend among American muscle cars. Only 500 of these heavy hitters were built in 1970 and they all featured the blue crescent or Hemi-design heads that made them so distinctive. These scale model collectors' cars were built by 1st Gear in Peosta, Iowa, using one of Les Baer's own Boss 429s to make all the prints and engineering drawings. No surprise, then, that these replicas look just like Les Baer's 429, right down to the Grabber Green exterior color with black interior, of which only 43 were built in 1970. Les' was built at Dearborn, Michigan where it was assigned Kar Kraft number KK 2337.

It's equipped with:

- Black Clarion Bucket Seats
- 3:91 Traction Lok Axle
- Four Speed Close Ratio Top Loader Drag-Pak
- Collapsible Spare
- Rim Blow Deluxe Steering Wheel
- Console
- Power Disc Front Brakes
- Décor Group
- Tachometer
- Competition Suspension
- Front Air Spoiler
- Functional Hood Scoop
- Trunk Mounted Battery

The highly detailed replicas feature:

- Opening Hood, Trunk And Doors
- Classic Boss 429 Engine
- Poseably Front Wheels
- Detailed Interior
- Detailed Undercarriage



If you admire fine American muscle cars, this Boss 429 is a must-have for your collection. If you buy one of Les Baer Custom's new Boss 1911 pistols, you really need to complete the package with one of these incredibly detailed replicas.

**LES BAER
CUSTOM, INC.**

**Performance.
It's everything.**



Email: info@lesbaer.com • <http://www.lesbaer.com>
Office Hours: 9AM-5PM Central Time