



USER'S MANUAL

GAS SYSTEM SEMI AUTO SHOTGUN

READ THE INSTRUCTIONS AND WARNINGS
IN THIS MANUAL CAREFULLY BEFORE USING
THIS SHOTGUNS



WARNING : This product can expose you to chemicals including lead, which are known to the state of california to cause cancer and birth defects or other reproductive harm. For more information go to www.p65Warnings.ca.gov

-Dear User

-We thank you very much choosing our fine art product.

-We expect your respect to the nature while using our products.

-We intend to continue for providing best guns and servicing for centuries to come.

- Please understand the mean that the first step of safety is yourself. Your shotgun

is a non living thing, can not think of safety. You manage it and only using carelessly causes accidents!

- Never use your shotgun when you are drunk, had drugs, when riding, when driving and when you feel yourself unwell.

- Do not shoot at hard surfaces very close and with a shallow angle because of skipping possibility.

- While shooting use protection material for your eyes and ears.

- Always keep your shotgun and cartridges away from the children that they can not reach. If possible in a locked safe place.

- Use the correct ammunition according to your shotgun's specifications.

- Do not shoot your shotgun without choke tubes and be sure the choke tubes are properly fitted in the muzzle. (On multi choke shotgun only).

- Never keep your hand in front of muzzle when shotgun is loaded.

- Be careful to follow the instructions correctly when assembling, dismantling and/or maintaining and cleaning your shotgun to avoid injuries.

- Before shooting be sure that inside of the barrel is exactly clean.

LOADING AND DISCHARGING



1- Make your shotgun safe by pushing the safety latch on the trigger guide on the left side. Be sure that the RED colour is not seen.



2- Push the bolt release button on the right side of case. Mechanism will slide strongly forward. **WARNING!!** Be careful not to place your hand thru the way of mechanism while sliding. Keep your hand below as seen in the figure.



3- Replace the cartridges as the metal end has to be backward in to magazine by pushing inside the carrier till hearing the locking click or till the cartridge is not seen. Repeat the operation up to magazine capacity. Take care to replace suitable cartridges according to its calibre or chamber specifications.



4- After filling the magazine push the cartridge drop lever (small latch at the back of carrier) you will see the cartridge dropping on the carrier.



5- Pull the bolt handle back. Mechanism will be kept at the back. Push the bolt release button as seen in figure 8. While the bolt is sliding forward strongly carrier will let the cartridge in front of the bolt and the bolt will lock the cartridge in the chamber. Do not catch the bolt handle while sliding forward. Unless the locking will not be done. One cartridge

of the magazine capacity is chambered now. You can now replace an other cartridge in to the magazine instead of chambered one. Thus the capacity of your shotgun will be filled. (4+ 1) Open the safely latch by pushing from the right side. You will see the red colour. Take care not to pull the trigger during this time. Now your shotgun is ready to fire. When you fire, your shotgun will automatically throw out the fired cartridge and replace one from the magazine.

DISCHARGING THE MAGAZINE

Do not keep your shotgun loaded out of shooting and hunting area. After Shooting or hunting discharge yourshotgun.



6-To discharge the cartridge in the chamber, pull back the bolt handle.



7-Mechanism will throw the cartridge out while sliding back.



8- Push the carrier at the bottom of the case inside and meantime push the bolt release button once and leave.



9- Cartridge will drop down to your finger on the carrier. Take off the cartridge. Repeat this operation until the cartridges finish in the magazine.

MAINTENANCE OF SHOTGUN



10- Loosen the screw in front of the forend to the reverse of clock direction and take off.



11- Dismantle the forend by pulling forward to the barrel end



12- Dismantle the barrel by pulling forward.



13- Dismantle the piston.



14- Push the latch under the trigger group (figure 11/ cartridge drop lever). Pull back the bolt handle. Clean the outer surface of chamber with a gland and keep oiled after shooting.



15- Clean the inside and the outer side of the piston with same method. Take care to keep reverse the open sides of rings which are out of the piston.

MAINTENANCE OF SHOTGUN



16- Open the holes with a string in the gas room on the bottom of barrel. Clean inside of gas room. Loosen the choke tube and clean the choke and choke bearing. Clean inside of the barrel with a ramrod. Keep quite oiled the cleaned surfaces and by pushing bolt release button while keeping the bolt handle and slide the bolt slowly to the end. If you slide the bolt fast it can damage the case.

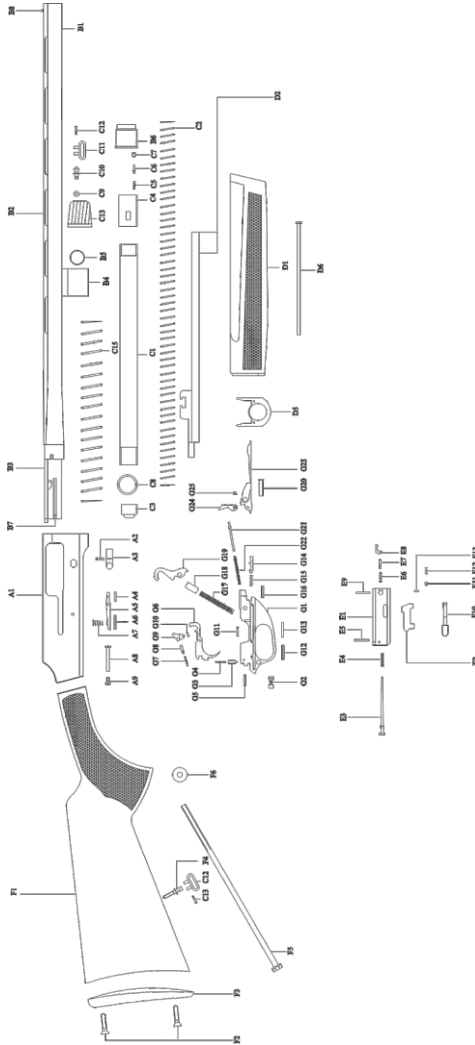


17- To assemble your shotgun again as processes 22,21,20 attach the parts in following order spring, piston and rubber ring. Remember the processes 4,5,6 assembling barrel and forearm.

-Out of this operations your shotgun will not need more maintenance as user.

- if you need further detailed maintenance or repair get an authorised service.
- Shoot your shotgun after cleaning the protective lubricant.

EXPLODED VIEW



PART LIST

PART CODE	PART NAME	PART CODE	PART NAME	PART CODE	PART NAME
A	RECEIVER GROUP				
A1	Receiver	C12	Sling Swivel Screw	G	TRIGGER GROUP
A2	Spring of Sub Button	C13	Core Part of Lock Cover	G1	Trigger Guard
A3	Sub Button	C15	Recolt Spring	G2	Safety
A4	Sub Button Plate Pin	D	FOREARM GROUP	G3	Safety Pusher Pin
A5	Sub Button Plate	D1	Forearm	G4	Safety Spring
A6	Sub Button Pin	D2	Action Handle	G5	Safety Spring Pin
A7	Spring of Sub Button Conik	D5	Forearm Plate	G6	Trigger
A8	Parapet Pin	D6	Wooden wedge	G7	Hammer Keeper Spring
A9	Screw of Parapet Pin	E	ACTION GROUP	G8	Pin of Hammer Keep Spring
B	BARREL GROUP	E1	Mechanism	G9	Hammer Keeper
B1	Barrel	E2	Bolt	G10	Pin Of Hammer Keeper
B2	Barrel Rib	E3	Firing Pin	G11	Trigger Spring
B3	Barrel Receiver	E4	Screw of Firing Pin	G12	Trigger Pin
B4	Gas Chamber	E5	Pin of Firing Pin	G13	Trigger Pin
B5	Oring	E6	Extractor Spring	G14	Shooter Pin
B6	Piston	E7	Extractor Spring Pin	G15	Shooter Pin Spring
B7	Cartridge Shooter	E8	Extractor	G16	Shooter Spring Pin
B8	Fore Side	E9	Extractor Pin	G17	Hammer Spring
C	MAGAZINE GROUP	E10	Pulling Handle	G18	Hammer Spring Block
C1	Magazine Tube	E11	Pulling Handle Fixing Ball	G19	Hammer
C2	Magazine Spring	E12	Pulling Handle Ball Spring	G20	Scoop Block
C3	Magazine Bottom Wad	E13	Pulling Handle Spring Pin	G21	Spring Pin of Scoop Hammer
C4	Magazine Top Wad	F	STOCK GROUP	G22	Spring of Scoop Hammer
C5	Click Spring of Lock Cover	F1	Stock	G23	Scoop
C6	Click Pin of Lock Cover	F2	Fixing Screw of Recoil Pad	G24	Scoop Hammer
C7	Forearm Plate Pushing Nut	F3	Recoil Pad	G25	Pin of Scoop Hammer
C8	Lock Cover	F4	Sling Swivel Screw of Stock		
C9	Swivel Nut of Lock Cover	C12	Sling Swivel Screw		
C10	Swivel Screw of Lock Cover	C13	Core Part of Lock Cover		
C11	Sling Swivel	F5	Recoil Pad Fixing Screw		
		F6	Washer		

TERMS OF GUARANTEE

GUARANTEE TERMS

1- Guarantee period for our goods starts with the delivery date and is two (2) years.

2- If the delivered good doesn't fit the ordered specifications claim and request period for the right product is one (1) month after the delivery date. Claims out of this period will not be accepted and will be understood that the good is accepted with delivered specifications. Good must be sent to us in two (2) months after the delivery date if the claim is accepted. After the report of our experts mentioning that the good is not used and there is not any damage, the right product will be sent to the customer. The period of sending the right product to the customer is three (3) months maximum after receiving the wrong product from the customer.

3- Technical specification of the product is mentioned as "Product Identification" in this user's manual.

4- Faults and defects appear and result from the customer/user as; wrong keeping/protection, maintenance and usage out of the instructions in this user's manual are out of guarantee coverage.

5- Faults and defects appear and result from the product as; material, workmanship and mounting are in guarantee coverage.

6- Goods are delivered to customer addresses according to their mailing service, courier and shipment choices and our establishment is not responsible for the faults and defects during shipment/delivery

7- Determining of a defective gun for guarantee coverage never can be done by phone calls, written, visual and digital communication.

This determination can finally be clear after the inspection of the good by our after sales and quality control experts in the factory.

8- If it is reported by our experts that the product is in guarantee coverage;

* All maintenance, repair and part costs will be at our expense.

* Shipment cost while receiving the product will be at our expense and shipment cost while sending the repaired product will be at customer's/owner's expense.

* Number of days during the maintenance and repair of the products in our after sales service will be added to the guarantee period. But in any case the number of the days can not be more than thirty (30).

9- If it is reported by our experts that the defective products is out of guarantee coverage; customer/user will be informed about the situation and all costs will be at customer's/user's expense even if maintenance and repair is not done.

10- Claims and request about our products can be done directly to us if it is bought from our factory sales office. Other wise claims have to be done through retailer, wholesaler or country distributor where it is bought. Claims out of this will not be valid.

11- Only the customer/user who owns the product registered in his/her licence can claim about the product..

12- Claims will not be taken care made without copies of licence and purchasing invoice.

13- In guarantee coverage of our products;

* In case of a report by our experts mentioning "the product must be changed,

* And in case if the products is out of usage, defective product will be changed without any extra cost with a new one in same specifications. The perriod of delivering the changed product never can be more than three (3) months.

14- For maintenance, repair and parts services of our products please contact your country distributor or contact directly to us for information.

15- Instructions about the possible dangers for human being, health and nature while using our products is mentioned in this user's manual.

16- For the claims and the problems about the guarantee period and coverage applications can be done to General Directorate for Protection of Consumer and Competition Flights under Instury and Trade Ministry.



5140 Commerce Ave. Unit A&B Moorpark, CA 93021
Phone : (805) 978 - 8565
Fax : (805) 978 - 8564
info@dickinsonarms.com