



INSTRUCTION MANUAL FOR PUMP ACTION

**READ THE INSTRUCTIONS AND WARNINGS
IN THIS MANUAL CAREFULLY BEFORE USING
THIS FIREARM**



WARNING: This product can expose you to chemicals, including lead, which are known to the State of California to cause cancer and birth defects or other reproductive harm. For more information go to www.P65Warnings.ca.gov

GUN SAFETY RULES

Observe these rules of safe gun handling.

1. Always keep the muzzle pointed in a safe direction. Watch the muzzle at all times: never point a gun, accidentally or intentionally, at any person or anything you do not intend to shoot. Identify the target before shooting; do not shoot at sounds.
2. Always treat a gun as if it is loaded—It may be!
3. Keep your finger off the trigger while operating the action and at all other times until you are ready to shoot.
4. Keep the safety “on” or in the “safe” position at all times until you are ready to fire.

Do not rely on your gun’s safety, the safety on any gun is a mechanical device and is not intended as a substitute for common sense or safe gun handling.

5. Learn how your gun functions and handles. If you do not thoroughly understand the proper use and care of your gun, seek the advice of someone who is knowledgeable.
6. Do not alter or modify any part of the firearm.
7. Store guns unloaded, separate from any ammunition and out of the reach of children.
8. Be sure the barrel is clear of any obstructions before loading. Make it a habit to check the barrel every time before loading.
9. Be Sure you have and use the proper ammunition. A 20 gauge shell will enter a 12 gauge chamber far enough so that a 12 gauge shell can be loaded behind it. Also, a 3 inch shell may fit into a 2 ¾ inch chamber, but the crimp at the mouth of the shell will unfold into the forcing cone. If either of these things occur and you fire the gun, the gun may explode, damaging the gun and possibly causing serious injury or death. **12 & 20 gauge will accept both 2 ¾” & 3” shells & the 410 will accept both 2 ½” & 3” shells.**
10. Wear protective shooting glasses and adequate ear protection when shooting.

11. Never climb or jump over anything, such as a tree, fence, or ditch, with a loaded gun. Open the chamber, remove the shells and hand the gun to someone else or place it on the ground on the other side of the obstacle before crossing it yourself. Do not lean a gun against a tree or other objects; it could fall and possibly discharge.

12. Do not shoot at a hard surface or at the water—bullets and shot can ricochet or bounce off and travel in unpredictable directions with great velocity.

13. Never transport a loaded gun. Do not place a loaded gun into a vehicle. The gun should be unloaded and placed into a case when not in use.

14. Never drink alcoholic beverages before or during shooting.

INTRODUCTION TO TRISTAR ARMS

For many years, **Tristar** has been importing quality shotguns, combining the old World quality with modern technology.

We as **TriStar**, thank you for the privilege of delivering a product to you that will provide you with years of pleasurable use. Happy Shotgunning.

ABOUT YOUR PUMP SHOTGUN

Your shotgun is manually operated. Once a shell has been fired, the locking lug in the bolt moves down, unlocking the gun. The forearm can then be moved to the rear and forward again. Ejecting and loading a new shell.

To open the bolt without firing the gun, depress the action bar lock, located just beside and forward of the trigger. This allows for opening the action without dry firing.

The 12 & 20 gauge magazine tube will accept 5pcs 2 ¾" shells or 4pcs 3" shells. The 410 magazine tube will accept 5pcs 2 ½" or 4pcs 3" shells.

SAFETY SWITCH OR BUTTON

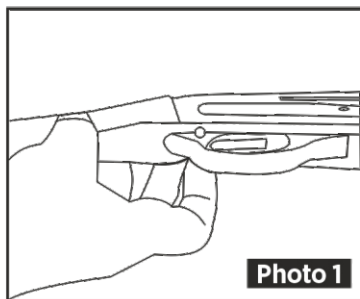
The safety is designed to stop the trigger mechanism.

DON'T RELY ON YOUR GUN'S SAFETY. TREAT EVERY GUN AS IF IT WAS LOADED AND READY TO FIRE. The safety on any gun is a mechanical device, and it is not intended as a substitute for common sense or safe gun handling.

Always keep the muzzle pointed in a safe direction.

A- The safety is located behind the trigger and provides protection against accidental or unintentional discharge under normal usage when properly used.

B- To engage the safety, push the button so that it protrudes from the right side of the gun and the RED BAND MARKING CAN NOT BE SEEN. The safety should always be in the “on” or “safe” position until you intend to fire the gun. **(Photo 1)**

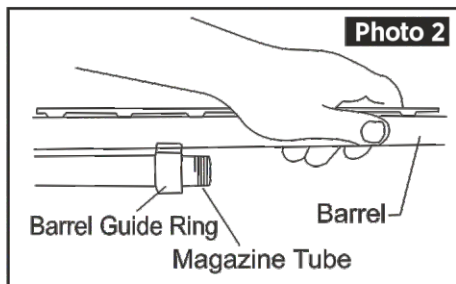


C- When you are ready to fire the gun, press the safety button to the “off” position so that the safety protrudes from the left side of the gun and the RED BAND MARKING IS SHOWING.

DANGER: The gun will fire when the trigger is pulled intentionally or accidentally when the RED BAND MARKING IS SHOWING.

ASSEMBLY

1. Remove the magazine cap.
2. Press upward on the action bar lock. Pull the forearm approximately half way rearward.
3. Hold the barrel ahead of the barrel guide ring **(Photo 2)**.



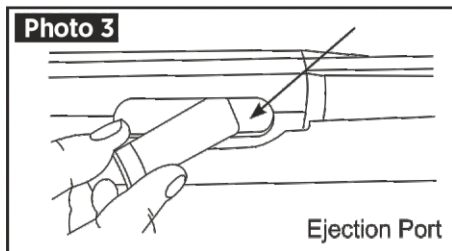
4. Slide the barrel guide ring over the magazine tube. Clean the barrel following the instructions on **Page 7 and 8**.
5. Press upward on the action bar lock.
6. Align the ejector on the inside of the barrel with the slot in the bolt.
7. Carefully set the barrel into the receiver. **DO NOT FORCE IT!**
8. Replace the magazine cap. Tighten.

DISASSEMBLY

1. Make sure the gun is unloaded!
2. Point firearm in a safe direction.
3. Push up on the action bar lock.
4. Slide forearm forward half way.
5. Unscrew and remove the magazine cap.
6. Pull the barrel carefully out of the receiver.
7. Push the carrier forward.
8. Press and hold the action bar lock.
9. Slide the forearm forward and off the magazine tube.

LOADING YOUR SHOTGUN -ONE SHELL ONLY-

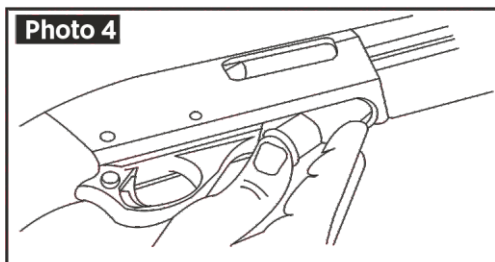
1. Put safety in the “on” position.
2. Point the gun in a safe direction.
3. Push up on the action bar lock.
4. Pull the forend completely to the rear and carefully hold it for the return spring models.
5. Put one shell through the ejection port, making sure it is the correct gauge and length. **(Photo 3)**.
6. Push the forend forward and close the action.




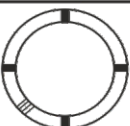



FULLY LOADING YOUR SHOTGUN

1. Put safety in the "on" position.
2. Point the gun in a safe direction.
3. Push up on the slide bar lock.
4. Pull the forearm completely to the rear and carefully hold it for the return spring models.
5. Put one shell through the ejection port, making sure it is the correct gauge and length. (Photo 3).
6. Push the forearm forward and close the action.
7. Push a shell upward against the bottom of the carrier. (Photo 4).
8. Push five (5) to four (4) shells, one at a time, fully forward into the magazine tube.

FOR THE MODELS WITH RETURN SPRING IN THE FOREND. YOU DO NOT NEED TO PUSH THE FOREND TO CLOSE THE ACTION. THIS WILL BE DONE AUTOMATICALLY BY THE HELP OF THE SPRING. THE SPRING WILL CLOSE THE ACTION AT A VERY FAST RATE. USE CAUTION AND WATCH OUT FOR YOUR FINGERS AND LOOSE CLOTHING.



USAGE OF CHOKE TUBES (IF YOUR SHOTGUN INCLUDES)

	SKEET	IC	M	IM	F
CHOKE TUBE					
BBLS	CL	HHHH	HHH	HH	H

The choke controls how open or tight the pattern of the shot will be. The chart above lists the chokes available (from open to tight), and the core spending marks that indicate the specific choke.

Never fire your gun or run cleaning tools through a barrel that uses a choke tube without having a choke installed. The threads of the choke tube and the internal threads of the barrel should be cleaned after each use and before installation of the tube. Your shotgun uses Beretta Mobil style screw in choke tubes.

To install a tube, insert the tube into the top of the barrel and tighten with your fingers. Once the tube is finger tightened, tighten the rest of the way with the appropriate choke tube wrench until the tube is snug. DO NOT over tighten or forcefully tighten with the wrench.

USAGE OF STEEL SHOT

The choke (before constriction) in all modern shotguns has been established based on the pattern performance of shot shells loaded with lead shot. When using steel shot shells, you will notice a different performance in pattern density versus the established lead shot pattern, because the steel shot is harder and lighter than lead shot.

You should be aware of the following differences and cautions:

Never shoot steel shot loads in a full choked barrel or an improved modified choked barrel. Doing so, may cause the barrel to swell or rupture. In general, steel shot fired with a modified choke will produce the equivalent of a lead full choke pattern. This will be true of all steel shot sized up to and including no. 2. The established improved cylinder chokes will produce the equivalent of a (lead) modified pattern.

All steel shot sized larger than no. 2, and including special sized such as F, T, etc., should be used only with improved cylinder chokes. These steel shot sizes, when used in an improved cylinder choke, will produce equivalent to (lead) full choke patterns. The established cylinder choke or bore will produce the equivalent of a modified (lead) pattern. Additional information concerning the use of steel shot is available from the.

MAINTENANCE AND CLEANING

CAUTION: Make sure the gun is UNLOADED.

1. Make sure the broad, polished finely fitted mating surface of the breech block and receiver is especially clean and lightly oiled with high quality gun oil. Do not use silicone or lanolin (DO NOT USE WD-40)

2. Run an oil patch through the bore with a cleaning rod starting from the breech end. To prevent leading, use a cleaning solvent and brass brush to clean the bore

periodically. Follow this cleaning with one or two clean oil patches. Important: If your gun is equipped with choke tubes, do not use a brass brush to clean the barrels without having a choke tube installed. Barrels that utilize choke tubes must also have the choke tubes removed to clean and oil the threads inside the barrel and the choke tubes themselves. This will protect the threads and prevent dirt build up that can cause tubes to become difficult to remove.

STORAGE

Clean thoroughly and oil your gun before storage. Store the gun in a case to prevent corrosion. Store the gun away from children and in a place where it cannot be obtained by those unauthorized to use it. Always store gun unloaded and separately from any ammunition.

IMPORTANT- HAZARDOUS MATERIAL WARNING

Discharging firearms in poorly ventilated areas, cleaning firearms, or handling ammunition, may result in exposure to lead and other substances known to cause birth defects, reproductive harm, and other serious injury. Have adequate ventilation at all times.

Wash hands thoroughly after exposure.

SERVICE AGREEMENT AND LIMITED WARRANTY

TriStar agrees to service its products free of charge for defects in materials and workmanship in accordance with the service agreement listed below. The obligation of **TriStar** under this agreement is limited to the repair or replacement of unserviceable parts and does not cover any incidental or consequential damages. Other than the express warranty contained herein, **TriStar** makes no warranties, expressed or implied.

TriStar will repair or replace any unserviceable part(s) for (1) year from the date of purchase and further will supply free parts (Wood not included) for an additional four (4) years in accordance with above warranty statement provided your firearm had not been altered, abused, willfully damaged, or damaged by overpressure ammunition. This agreement is not transferable; its benefits apply only to the original purchaser.

To obtain free service during the time this agreement is in effect, make sure your firearm is unloaded and send to **TriStar** Arms.

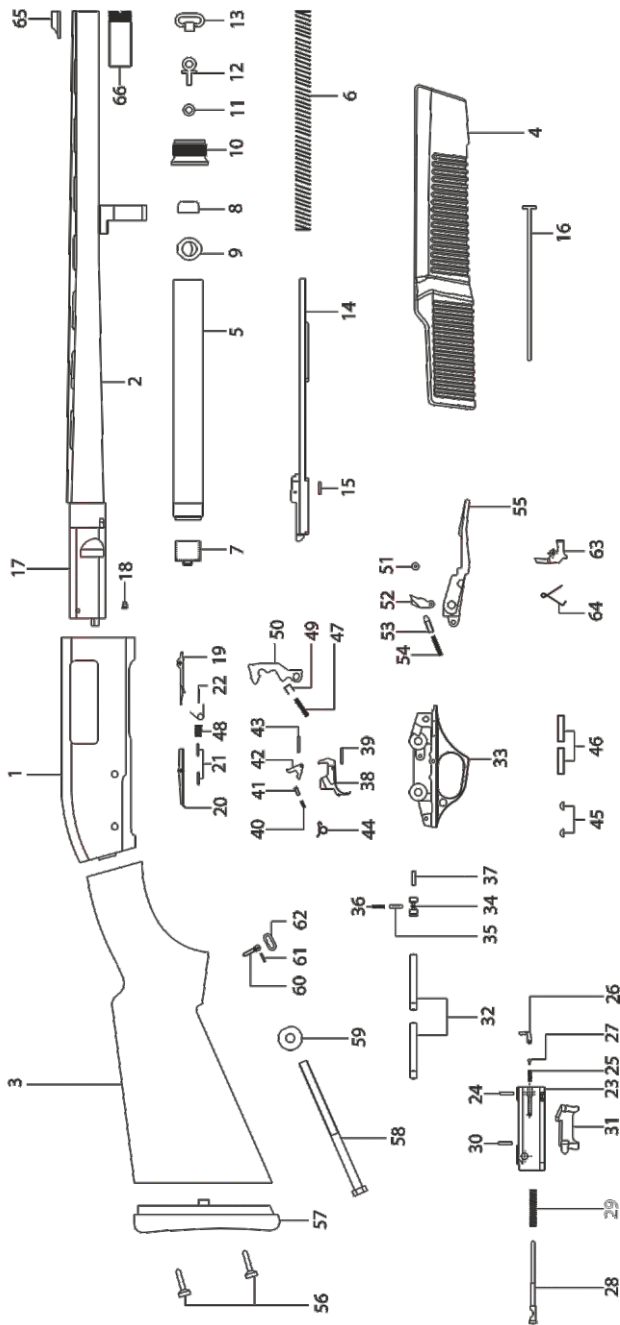
This agreement and the warranties contained herein are void if your registration is not received within thirty (30) days from the date of purchase.

Please visit www.tristearms.com to fill out and submit warranty.

SHIPPING

When returning your firearm for service, please take care in packing. Disassemble your gun wrap in a safe manner and place it in its original box. (THIS BOX WILL PROTECT THE GUN BUT IS NOT DESIGNED FOR SHIPPING). Wrap the box in a cardboard box approved for interstate shipping. TriStar is not responsible for damage incurred during shipping.

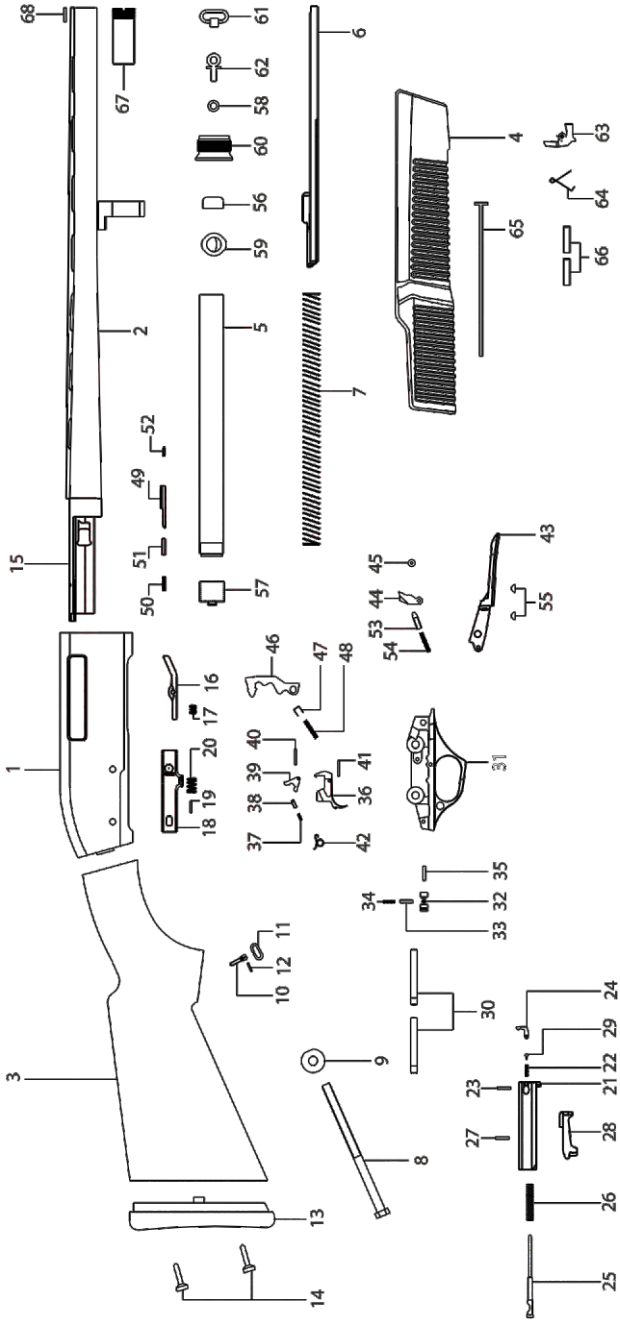
12 GA. EXPLODED DIAGRAM



12 GA. PARTS LIST

Part No	Part Name	Part No	Part Name
1	Receiver	34	Safety
2	Barrel	35	Safety Spring Capsule
3	Stock	36	Safety Spring
4	Forend	37	Safety Spring Detent Pin
5	Magazine Tube	38	Trigger
6	Magazine Spring	39	Trigger Detent Pin
7	Magazine Lower Follower	40	Inner Trigger Spring
8	Magazine Upper Follower	41	Inner Trigger Spring Capsule
9	Plug Retainer	42	Inner Trigger
10	Magazine Cap	43	Inner Trigger Pin
11	Front Swivel Oring	44	Trigger Spring
12	Front Swivel Stud	45	Trigger Plate Detent
13	Front Swivel Ring	46	Unloading Latch Pins
14	Slide Bar	47	Hammer Spring
15	Bolt Retaining Pin	48	Carrier Latch Spring
16	Plug	49	Hammer Spring Capsule
17	Barrel Lug	50	Hammer
18	Ejector	51	Carrier Dog Detent Pin
19	Carrier Latch Button	52	Carrier Dog
20	Carrier Latch	53	Carrier Dog Spring Capsule
21	Carrier Latch Pins	54	Carrier Dog Spring
22	Carrier Latch Button Spring	55	Carrier
23	Bolt	56	Recoil Pad Screws
24	Bolt Pin	57	Recoil Pad
25	Extractor Spring	58	Stock Bolt
26	Extractor	59	Stock Bolt Washer
27	Extractor Pin	60	Stock Swivel Stud
28	Firing Pin	61	Stock Swivel Pin
29	Firing Pin Spring	62	Stock Swivel Ring
30	Firing Pin Detent Pin	63	Unloading Latch
31	Locking Block	64	Unloading Latch Spring
32	Receiver Pins	65	Front Sight
33	Trigger Plate	66	Choke

.410 BORE EXPLODED DIAGRAM



.410 BORE PARTS LIST

Part No	Part Name	Part No	Part Name
1	Receiver	35	Safety Spring Detent Pin
2	Barrel	36	Trigger
3	Stock	37	Inner Trigger Spring
4	Forend	38	Inner Trigger Spring Capsule
5	Magazine Tube	39	Inner Trigger
6	Slide Bar	40	Inner Trigger Pin
7	Magazine Spring	41	Trigger Detent Pin
8	Stock Bolt	42	Trigger Spring
9	Stock Bolt Washer	43	Carrier
10	Stock Swivel Stud	44	Carrier Dog
11	Stock Swivel Ring	45	Carrier Dog Detent Pin
12	Stock Swivel Pin	46	Hammer
13	Recoil Pad	47	Hammer spring Capsule
14	Recoil Pad Screws	48	Hammer Spring
15	Barel Lug	49	Ejector
16	Carrier Latch Button	50	Ejector Spring
17	Carrier Latch Button Spring	51	Ejector Pin
18	Carrier Latch	52	Ejector Rivet
19	Carrier Latch Pin	53	Carrier Dog Spring Capsule
20	Carrier Latch Spring	54	Carrier Dog Spring
21	Bolt	55	Trigger Plate Detent
22	Extractor Spring	56	Magazine Upper Follower
23	Bolt Pin	57	Magazine Lower Follower
24	Extractor	58	Front Swivel Oring
25	Firing Pin	59	Plug Retainer
26	Firing Pin Spring	60	Magazine Cap
27	Firing Pin Detent Pin	61	Front Swivel Ring
28	Locking Block	62	Front Swivel Stud
29	Extractor Pin	63	Unloading Latch
30	Receiver Pins	64	Unloading Latch Spring
31	Trigger Plate	65	Plug
32	Safety	66	Unloading Latch Pins
33	Safety Spring Capsule	67	Choke
34	Safety Spring	68	Front Sight

PARTS

To order parts, please be ready with the following information: Your name, Address, Phone Number, Firearm Serial Number, Model Name, Payment Information.

Call **TriStar** Service Department (816) 421-1400

FOR SERVICE

Ship the firearm prepaid to: **TRISTAR ARMS, INC.**
1816 LINN ST.
NORTH KANSAS CITY, MO 64116

THANK YOU

Thank you for purchasing a TriStar Shotgun. We are sure this gun will bring you years of hunting and/or shooting pleasure. Your satisfaction is the key to our success. Please let us know if we can be of service and relay any observations about your guns performance or appearance. For your questions or comments please visit **www.tristararms.com**

PURCHASER'S RECORD

Model Number _____

Purchase Date _____

Gauge or Caliber _____

Serial Number _____

Purchase Price _____

Store Name _____

BE COURTEOUS

When shooting or hunting always acquire the permission of the landowner. Respect the land. Do not litter, use gates when possible, leave open gates open and closed gates closed. Drive vehicles only where advance permission has been granted and always express gratitude for use of another persons land. offer your labor or game as repayment for the privilege of use. Remember you are helping develop a reputation for all sportsmen/sportswomen.



Tristar Arms
1816 Linn Street
North Kansas City, MO 64116
PHONE : 816-421-1400
www.tristararms.com