



NORTH AMERICAN ARMS, INC.
"Owner's Instructional Manual"



North American Arms, Inc. Mini-Revolvers
Mini-Master • Black Widow • Pug

Congratulations on your purchase of a North American Arms (NAA) mini-revolver! This handgun has been manufactured in the United States from the finest available materials by a team of highly-trained and long-experienced craftsmen. Before leaving the factory, your handgun was thoroughly inspected and test fired to assure you years of reliable, trouble-free service.

This manual was written to provide you with information regarding the safe operation specific to this handgun. It is critically important that you become familiar with this handgun and its features, and that you gain this familiarity before loading it. As the owner, you are responsible for the safe use and storage of this handgun.

If you have any questions regarding the operation &/or safe handling of this handgun, you are invited to contact the factory, either by email to: ***CustomerService@NorthAmericanArms.com*** or by calling the factory at ***800-821-5783***.

WARRANTY

All NAA products carry a lifetime warranty to the original registered owner which covers defects in materials, workmanship and mechanical function. The warranty does not cover normal wear or damage resulting from neglect, abuse, customizing or repairs not made by NAA.

You can register this gun with the factory either by returning the enclosed card or by visiting our website: www.NorthAmericanArms.com

Under the terms of this warranty, NAA will repair or replace, at its option, the handgun or any part thereof, without charge, provided that the handgun is returned pre-paid to the factory.

NAA does not cover return shipping on firearms manufactured more than two years prior to the factory's date of receipt.

Disassembly of this handgun beyond that required for loading and unloading will render this warranty null and void.

NAA strongly recommends that you record and store the serial number for this firearm.

STATEMENT OF LIABILITY

WARNING! All NAA mini-revolvers are classified as dangerous weapons; therefore NAA surrenders this handgun with the understanding that no liability whatsoever is assumed by NAA for its resale, safe handling nor compliance with existing State or Federal laws and regulations by future recipients.

Further, NAA accepts no liability for personal injury, or loss of property or life resulting from the use of this handgun under any circumstances, including intentional discharge, reckless conduct, negligence or accidental discharge of this handgun nor the function of this handgun when subjected to influences beyond the control of NAA.

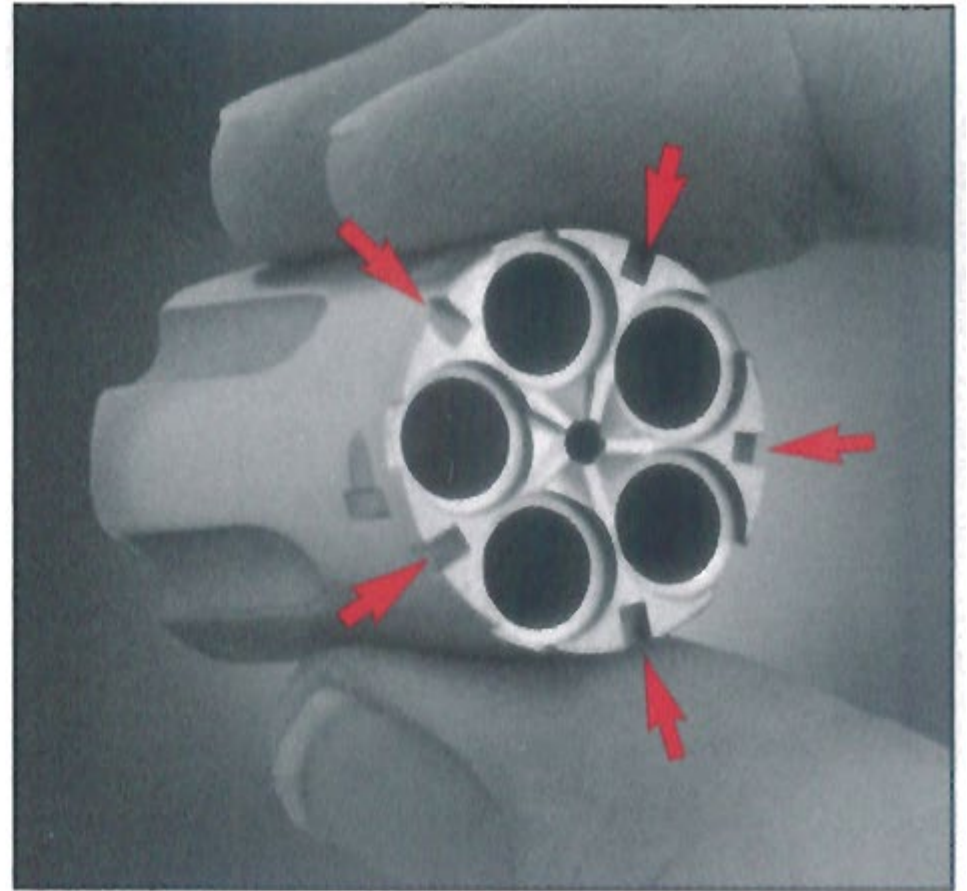
SAFE OPERATIONS

All NAA mini-revolvers are designed with safe operation in mind. However, because of their small size, particular care must be taken while handling this handgun. Strict attention must be paid to all the basic rules of firearms safety. All fingers must be kept behind the muzzle and away from the cylinder-barrel gap. Before loading or firing this handgun, read this manual thoroughly, making sure that you understand the operations of the handgun and assuring that you have rehearsed and are entirely familiar with the functioning of the safety slot. *The traditional half-cock (first hammer stop) position is not intended to serve as a safety; its purpose is solely as an aid to loading and unloading.*

THE SAFETY SLOT

For years, the conventional way to safely carry a single-action revolver, like an NAA mini-revolver, was to rest the hammer over the top of an empty chamber in the cylinder.

The reason was to eliminate the risk that, in the event that the gun was dropped or the hammer was otherwise struck, energy would be transferred to a cartridge and a round would accidentally discharge. While an effective solution, the cost of that strategy was to reduce the gun's capacity by one round.



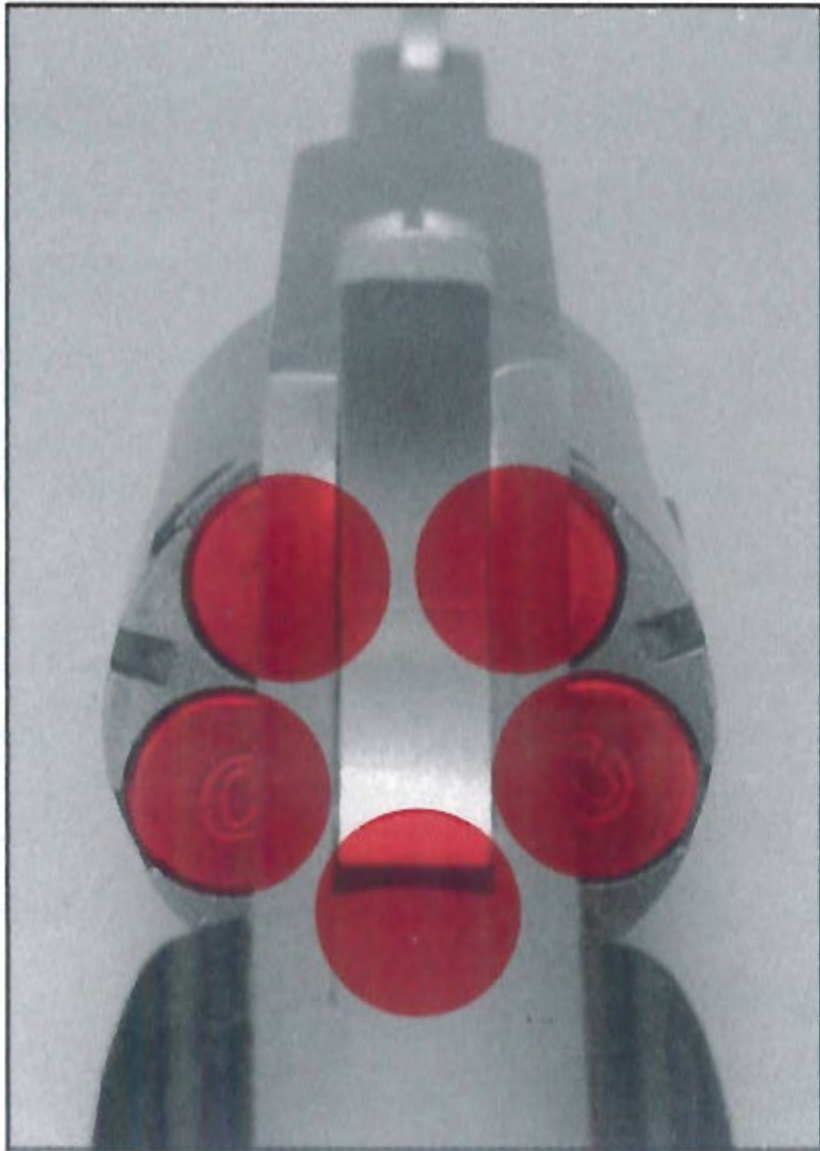
Hammer safety slots in between cartridge chambers

About 25 years ago, NAA's engineers designed an elegant solution, which was to mill a small notch (safety slot) on the rim of the cylinder. The blade of the hammer is fit into that notch and any energy or impact on the hammer is harmlessly transferred to the wall of the cylinder instead of the rim of the cartridge. When the hammer is cocked, the cartridge simply and automatically aligns itself into proper battery.

By engaging the hammer in the safety slot, there is no threat of accidental discharge and the revolver can be loaded to full capacity.

WE RECOMMEND THAT YOU PRACTICE THE FOLLOWING PROCEDURE SEVERAL TIMES WITH AN UNLOADED MINI-REVOLVER.

- To engage the hammer blade into a safety slot, the hammer is retracted slowly and slightly beyond the half-cock position until the cylinder turns freely. Make absolutely certain that you have full control of the hammer and that it does not slip from your grasp, falling forward.
- Rotate the cylinder to a position where the hammer is aligned with a safety slot.
- While holding the hammer securely, press the trigger and ease the hammer slowly forward into a safety slot. Do not depress the trigger unless and until the hammer is aligned with the safety slot. You must continue to depress the trigger until the hammer is firmly and fully seated in a safety slot.



Yes-Hammer in safety slot



No-Hammer on live cartridge

- Make certain that the hammer blade is resting securely in a safety slot and that the cylinder does not rotate.
- Closely study the photographs to identify the proper engagement of the safety slot. Take particular notice of the orientation of the chambers in the cylinder.

DANGER

This handgun may discharge if it is dropped or struck on the hammer with a live round under the hammer, or if the thumb slips while cocking or uncocking the handgun with the trigger depressed.

Do not carry this handgun with the hammer resting above a live cartridge or in the half-cock position.

To make an accidental discharge impossible, place the hammer in the safety slot immediately after loading and after finishing firing.

LOADING

(Before loading, practice the following steps by hand motions only)

- To remove the cylinder, first place hammer in the half-cock position.

- Pull the cylinder pin block down.
- Turn the cylinder pin block 90 degrees.

(See figure 2)

- Slide the cylinder pin block out of the gun in the direction of the muzzle end of the barrel. The cylinder can now be easily removed from either side of the gun.

- After loading the cylinder with five shells, reverse the above procedure to insert the cylinder, making sure the cylinder pin seats firmly against the frame and locked in its groove for proper functioning.

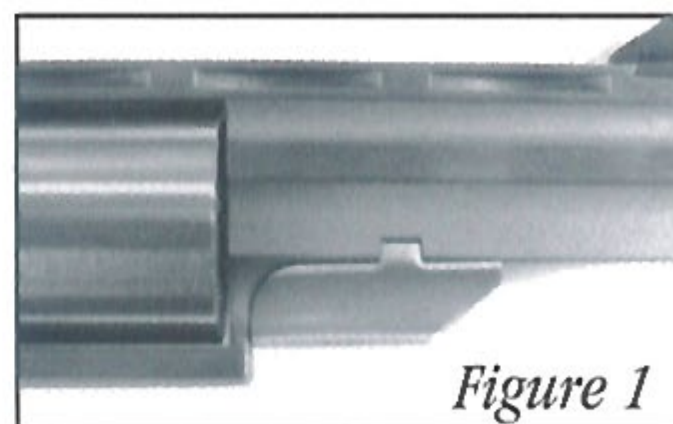


Figure 1

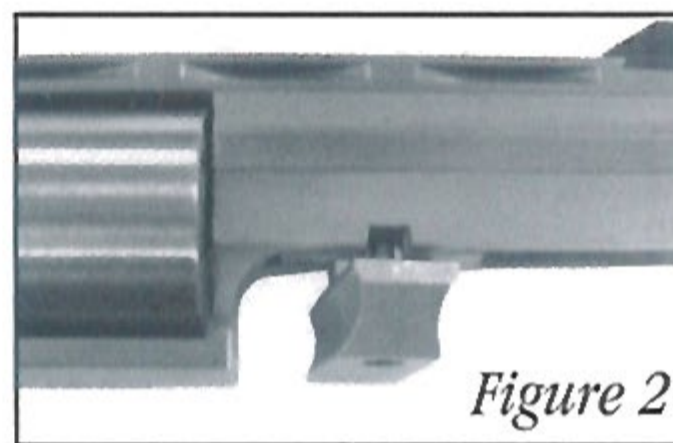


Figure 2

AIMING

To aim your revolver, simply align the front post in the center of the notch on the rear of the frame ensuring the front post is even in height with the sides of the notch.

FIRING

To fire the revolver, draw the hammer back as far as possible, making sure that it locks in the fully cocked position before removing your thumb from the hammer.

Actual firing is done by pulling the trigger. Note that, due to the small physical size of the mini-revolver, you must ensure that neither the thumb nor any fingers impede the rotating action of the cylinder or the cocking of the hammer. Make sure the cylinder is properly rotated to the locked position each time you cock the gun.

Practice the cocking action with an empty cylinder before firing live ammunition.

UNLOADING

Follow the same procedure described for loading, and use the cylinder pin for extracting the empty cases.

MAINTENANCE

As with other fine revolvers, it is recommended that the bore and chamber be cleaned after firing and coated with a very light film of oil.

AMMUNITION

Verify and use only .22 Long Rifle ammunition in those revolver cylinders chambered for .22 Long Rifle.

Any .22 caliber Winchester Magnum RimFire (WMR) ammunition can be used in this Magnum mini-revolver – ***EXCEPT THAT BRANDED “PMC”, WHICH HAS RESULTED IN OUT-OF-BATTERY DISCHARGES.***

WARNING! DO NOT USE ANY PMC AMMUNITION IN ANY NAA mini-revolver!

You are additionally cautioned NOT to use any .22 caliber Long Rifle (LR) or Short (S) ammunition in a Magnum (WMR) cylinder. Your Magnum Frame gun can be fitted with a Long Rifle conversion cylinder chambered specifically for either of those rounds, which is stamped on the muzzle end “L”.

WARNING STATEMENT! Discharging firearms in poorly ventilated areas, cleaning firearms, or handling ammunition may result in exposure to lead and other substances known to the State of California to cause birth defects, reproductive harm and other serious physical injury. Have adequate ventilation at all times. Wash hands thoroughly after exposure.

NAA STRONGLY RECOMMENDS that all NAA firearms be carried in an appropriate holster - even/especially when carried in a purse or pants pocket.

If you ever have any questions about the information contained in this manual or the safe operations of your NAA firearm, please feel welcome to contact the factory for immediate and personal customer service.

NORTH AMERICAN ARMS, INC.

2150 South 950 East • Provo, UT 84606-6285

800-821-5783 or 801-374-9990

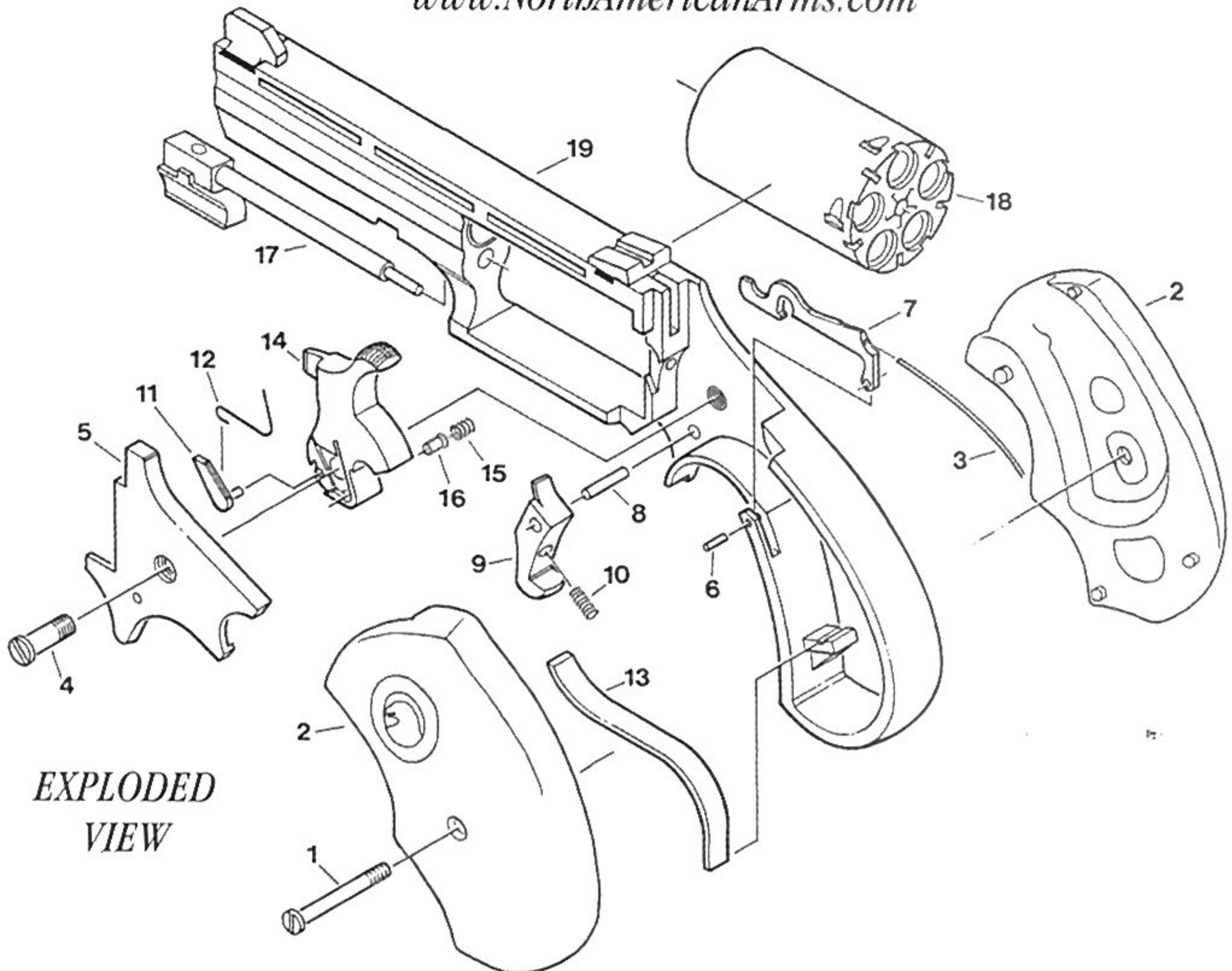
www.NorthAmericanArms.com

Mini-Master, Black Widow, Pug Replacement Part List

**(Requires Factory Installation)*

1	3510	Grip Screw. (MM & BW)	13	1406	Mainspring
2	GMM-M	Black Rubber Grip (MM)	14	1210	Hammer
	GMM-B	Black Rubber Grip (BW logo)	15	1250	Index Spring
	GSO-M	Slip on Black Rubber Grip	16	1240	*Index Pin
3	2402	Bolt Spring	17	3300	Cylinder Pin (MM & BW)
4	1140	Main Screw		3300-Pug	Cylinder Pin (Pug)
5	1120	*Side Cover	18	3400-M	*Cylinder (Mag Non-Fluted)
6	1407	Bolt Pin		3400-C	*Cylinder (LR Conversion Non-Fluted)
7	1401	Cylinder Bolt		2400	*Cylinder (Mag Fluted)
8	1404	Trigger Pin		2400-C	*Cylinder (LR Conversion Fluted)
9	1403	*Trigger	19	3100-4	Frame (Mini-Master)
10	1405	Trigger Spring		3100-2	Frame (Black Widow)
11	2220	*Cylinder Hand		3100-1	Frame (Pug)
12	1230	Hand Spring			

*For replacement parts pricing, check our web site at:
www.NorthAmericanArms.com*



**EXPLODED
VIEW**