



POINTER

UNLIMITED SHOOTING PLEASURE

INSTRUCTION MANUAL FOR OVER / UNDER

**READ THE INSTRUCTIONS AND
WARNINGS IN THIS MANUAL CAREFULLY
BEFORE USING THIS FIREARM**

CONTENTS

	Page
GUN SAFETY RULES	3
NOMENCLATURE	4
OPERATING MECHANISM	4
ASSEMBLY INSTRUCTIONS	5
LOADING & FIRING	6
UNLOADING	7
DISASSEMBLY INSTRUCTIONS	7
USE OF THE "CHOKES"	8
CARE, CLEANING AND LUBRICATION	9
ILLUSTRATIONS	10-11
EXPLODED VIEW, EJECTOR MODEL	12
EJECTOR MODEL PARTS LIST	13
EXPLODED VIEW, EXTRACTOR MODEL	14
EXTRACTOR MODEL PARTS LIST	15

Congratulations and thank you for choosing a POINTER over/under shotgun.

WARNING !

Read very carefully this instruction manual before handling this firearm. Incorrect handling may result in serious injury or death to you or bystanders.

Always keep this manual with your firearm. Make sure you understand all the operation instructions, safety procedures and warnings in this manual before you handle the firearm.

If you sell, lend or give the firearm to another, make sure this manual goes with it.

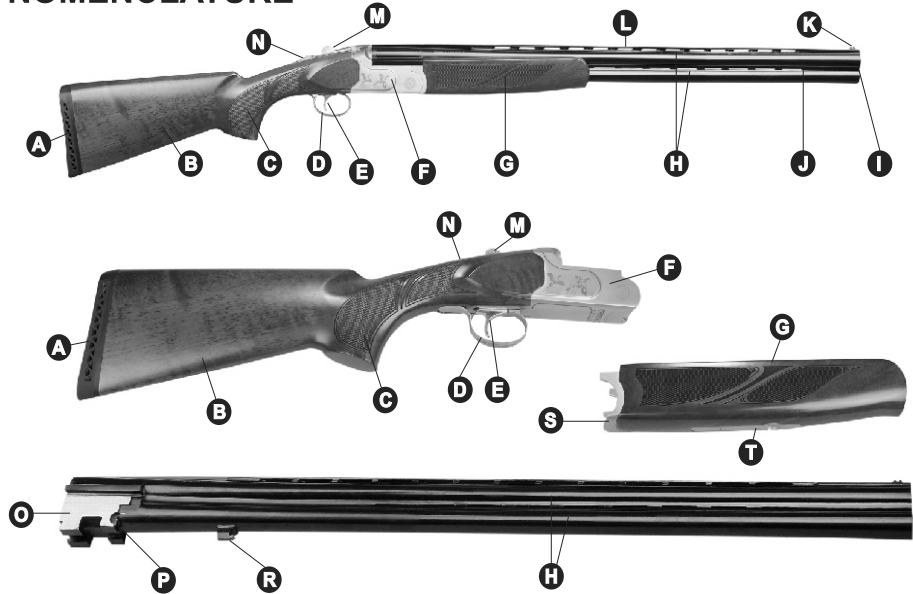
WARNING !

Always keep your finger outside the trigger guard and be sure that the safety is fully engaged until you are ready to fire. The safety is fully engaged only when the letter S (meaning Safe) underneath the safety button is completely visible and it can be moved no further toward the "ON" position.

GUN SAFETY RULES:

1. Always point the firearm in a safe direction even though it may be unloaded. Do not point the gun at anything you do not intend to shoot. Avoid all horseplay while handling a gun.
2. Keep your finger away from the trigger when operating any other part of the gun's mechanism.
3. Keep the safety "ON" until you are actually ready to fire. Treat every gun with respect and caution.
4. Keep your fingers away from the muzzle. Never pull a gun toward you by the muzzle.
5. Be sure the barrel is clear of obstructions.
6. Keep your gun unloaded when not in use and never load your gun if you will not shoot.
7. Always aim at a safe target, taking care that it does not conceal any other object. Be sure of your target and what lies beyond before you pull the trigger. Never shoot at sounds. To avoid ricochets, do not shoot at a flat or hard surface or at water.
8. Store guns and ammunition separately, beyond the reach of children, better if under lock and key, Guns should always be unloaded when stored.
9. Never carry a loaded gun inside a vehicle, house, camp, or public place. When transporting the gun keep the gun "on safe" and unloaded. Never climb a tree or fence, or jump a ditch with a loaded gun.
10. Never rely on anyone's word that the gun is "on safe" or unloaded. Always check to see if the gun is "on safe" and unloaded when getting it from another person or storage.
11. Avoid alcoholic beverages or drugs before or during shooting.
12. Always use eye & hearing protection and make sure bystanders are similarly protected.
13. Although the firearm itself does not contain any lead, it fires ammunition containing lead or lead compounds, which are known to be dangerous for health. Take protective health measures when shooting or cleaning guns. Avoid exposure to the lead while handling and wash your hands after contact. Proper air ventilation is absolutely necessary when shooting indoors.
14. Any damage, malfunction, injury, or death resulting from the use of faulty, incorrect, non -standard, remanufactured, hand loaded or reloaded ammunition is the sole responsibility of the user.

NOMENCLATURE



- | | | |
|------------------|---------------------------|-------------------------|
| A. Recoil Pad | H. Barrel | O. Monoblock |
| B. Stock | I. Muzzle | P. Hinge Pin Slot |
| C. Stock Grip | J. Side Rib | R. Barrel Hook |
| D. Trigger Guard | K. Front Sight | S. Fore-end Steel Plate |
| E. Trigger | L. Rib | T. Fore-end Latch |
| F. Receiver | M. Top Lever | |
| G. Fore-end | N. Safety/Selector Button | |

OPERATING MECHANISM

Your shotgun is an over & under shotgun meaning there the 2 barrels one on top of the other. Every time you pull the trigger only one of the barrels is fired. When you fire the first barrel the trigger automatically sets to the other barrel to fire.

Your shotgun has a single selective trigger mechanism and you can choose which barrel to fire first by moving the Safety/Selector button.

Before you assemble your firearm please make sure you understand the function of the Safety/Selector button. ("Right" and "Left" refer to the gun as seen by a shooter holding it in the firing position.)

Safety/Selector Button: It is located on top of the receiver.

Safety Function: When the letter S is not visible, it means that the safety is disengaged ("OFF") and firearm is ready to fire. (1)

To engage the safety, pull it fully rearward until the letter **S** is completely visible and it will move no further. The safety is now **ON** and the trigger cannot be pulled. (2)

To take the safety **OFF**, push the button fully forwards until the letter **S** is not visible. Now the safety is **OFF** and the trigger can now be pulled.

Selector Function:

To select the upper barrel, push the selector button to the left until the selector button reveals letter **O(3)**. In this position you can fire the upper barrel.

To select the lower barrel, push the selector button to the right until the selector button reveals letter **U(4)**. In this position you can fire the lower barrel.

Note: Safety should be set to **ON** position (**S should be visible**) in order to manipulate the Selector button.

WARNING !

- 1) Always keep the safety "ON" until you are ready to fire and the muzzle is pointing at the target.
- 2) Make sure that you understand how all controls work before you attempt to load the firearm.
- 3) Keep the muzzle pointed in a safe direction and your finger off the trigger when operating the safety. Malfunctions which may cause a gun to fire when the safety is engaged or disengaged are rare but can happen. Even if an accidental firing should occur, nobody will be hurt if you follow this rule.

THREE THINGS TO REMEMBER ABOUT SAFETIES

1) NEVER, TOTALLY, DEPEND ON A MECHANICAL SAFETY. It is not a substitute for proper gun handling. Like all mechanical devices the safety is subject to breakage or malfunction and can be defected by wear, abuse, dirt, corrosion, incorrect assembly of the firearm, improper adjustment or repair, or lack of maintenance.

2) NO MECHANICAL SAFETY IS "CHILDPROOF" OR "FOOLPROOF". No safety ever invented can be relied upon to prevent an accidental shooting by a determined child or a grown up **"playing"** with a gun.

3) TREAT EVERY GUN AS IF YOU EXPECT ITS MECHANICAL SAFETY NOT TO WORK. Use caution when handling your firearm. Never point a firearm in an unsafe direction, or at anything you do not intend to shoot.

Trigger: It is located in the trigger guard. With the safety OFF and a cartridge in the chamber, pulling the trigger fires the gun.

When the Safety/Selector button is set to the O position, trigger fires the upper barrel.

When the Safety/Selector button is set to the U position, trigger fires the lower barrel.

(see Safety/Selector Button section)

ASSEMBLY INSTRUCTIONS

Your new over/under shotgun is packed disassembled in its box, i.e. barrel/fore-end is separated from the stock-receiver assembly. To attach the barrel, first remove all parts from the plastic bags. Before proceeding with the assembly of the firearm, carefully check the **"Nomenclature"** and read **"Safety Measures"** sections.

WARNING !

Before assembling shotgun, check the barrel. Barrel and cartridge chamber must be clean and there should be no obstructions in them.

Assemble the barrel as follows:

1. Take the barrel/fore-end assembly. Remove the fore-end from the barrel by pulling the fore-end latch down. (5)
2. Take the stock-receiver assembly. Rotate the top lever to the right until it locks in the open position. (6)
3. Take the barrel and insert the monoblock inside the receiver by aligning the hinge pins into the slots in the monoblock. (7) Then swing the barrel upwards so that it sits correctly and locks into the receiver. (8) You will hear a 'click' noise and see that the top lever comes into its center position when the barrel is correctly locked into the receiver.
4. Take the fore-end and fit it under the barrel, and then swing it upwards until it sits and locks under the barrel. (9)

Check if the fore-end latch sits flush with the fore-end to verify that you have assembled the shotgun properly. If not please reverse the above process and repeat the assembly process.

LOADING & FIRING

WARNING !

- 1) Always keep your fingers away from the trigger if you do not intend to fire.
- 2) Always check barrels to see that the firearm is not already loaded.
- 3) While you load the firearm, always point the barrel in a safe direction.
- 4) Always use the correct ammo size for which your firearm is chambered.
- 5) Always keep the safety "ON" while loading your firearms.

Load the firearm as follows:

1. Put the safety "ON" if it is disengaged (2.)
2. Take the assembled shotgun and rotate the top lever to the right and break the barrels downward. (10)
3. Make sure the muzzles point down and there is no obstruction in the barrels. Then take proper gauge cartridges and insert them into the upper or lower barrels of your choice or into both barrels for 2 shots. (11)
4. Swing up the barrel completely and lock it in the receiver. (12)

While doing this make sure you hear the 'click' noise when the barrel is closed, make sure barrel is locked properly in the receiver and make sure the top lever returns to its center position.

If any of these do not happen this means your shotgun is not assembled correctly. In such a case immediately unload your shotgun (see Unloading section) and disassemble it (see Disassembly section) and assemble your shotgun again (see Assembly section).

WARNING !

FIREARM IS NOW LOADED AND READY TO BE FIRED

- 5) Here you can choose which barrel to fire first by means of the Safety/Selector button. Take aim at a safe target, take the safety off and depress the trigger. The shotgun will fire the over or under barrel which at Safety/Selector button is set to.

The second time you depress the trigger the other unfired barrel will fire.

WARNING !

Keep the safety "ON" and your finger outside the trigger guard until you are actually ready to fire and aimed at your intended target.

It is the user's sole responsibility to take necessary safety, protection and health measures during firing.

UNLOADING

WARNING !

Keep your fingers off the trigger and keep the safety ON.

To unload the fired shells or unfired shells from the barrels, please follow below steps:

1. Point the firearm in a safe direction and engage the safety. (2)
2. Rotate the top lever to the right and break the barrels (10)
3. Using your fingers remove the fired or unfired shells. (13)

Now you can reload new shells if you are going to continue firing or you need to lower the hammers if you will not fire any more.

Please follow below steps if you want to lower the hammers:

1. After unloading, insert two empty shells into the 2 barrels and then close the barrel properly so it locks into the receiver.
2. Point the muzzle in a safe direction, take off safety and pull the trigger to lower the first hammer belonging to the over or under barrel.
3. Bring the Safety/Selector button to the position of the other barrel. **O** or **U** position depending on which barrel is fired in the first shot. (3) or (4). Then pull the trigger to lower the second hammer.

PS: If your shotgun is ejector model, empty shells will be removed automatically by ejector part(13a2) when you break barrels(13a).

DISASSEMBLY INSTRUCTIONS

WARNING !

Before disassembling the firearm, always make sure that the firearm is not loaded; barrel is pointed in a safe direction and safety "ON".

Disassemble your shotgun as follows:

1. Remove the fore-end by pulling the fore-end latch. (5)
2. Rotate the top lever to the right.
3. Break the barrels all the way down and lift them to separate from the receiver.
4. Place the fore-end under the barrels.

With above process you will see that the top lever stays in its right locked position. To bring the top lever to its center position, rotate & hold the top lever to the right and press the detent pin in the receiver. Then release the top lever and it returns to its center position.

It is recommended to bring the top lever to its center position when you are not going to continue using your shotgun.

NOTE: To reassemble the firearm, follow the steps in the Assembly section.

USE OF THE “CHOKES”

Shotgun choke is a constriction in the end of a shotgun barrel which focuses the shot into a tighter stream—much like a nozzle on the end of a water hose, which does exactly the same thing for exactly the same reason.

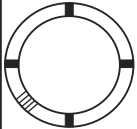
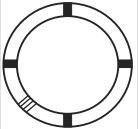



There are 5 different screw-in (inner) chokes that can be used on your firearm. (14)

- 1)F (Full /)
- 2)IM (Improved Modified //)
- 3)M (Modified ///)
- 4)IC (Improved Cylinder ////)
- 5)CYL (Cylinder /////)

Check the number and markings on the chokes to find out the inner choke configuration of your firearm.

All screw-in(inner) chokes have one,two,three,four or five notches, which indicate the type of the screw-in choke,i.e F choke has one, IM has two, M has three, IC has four and Cyl-Skeet has five notches.Please also check the markings on chokes.

Note:M,IC, and Cyl choke tubes are good for steel shot. **F&IM chokes are lead shots, only!**

	CYL	IC	M	IM	F
CHOKE TUBE					

IMPORTANT USAGE OF STEEL SHOT

The choke (constriction) in all modern shotguns has been established based on the pattern performance of shot shells loaded with lead shot. When using steel shot shells, you will notice a different performance in pattern density versus the established lead shot pattern, because steel shot is harder and lighter than lead shot. You should be aware of the following differences and cautions:

Never shoot steel shot loads in a full choked barrel or an improved modified choked barrel. To do so may cause the barrel to swell or rupture. In general, steel shot fired with a modified choke will produce the equivalent of a lead full choke pattern. This will be true of all steel shot sized up to and including no. 2. The established improved cylinder chokes will produce the equivalent of a (lead) modified pattern. All steel shot sized larger than no. 2, and including special sized such as F, T, etc., should be used only with improved cylinder chokes. These steel shot sizes, when used in an improved cylinder choke, will produce equivalent to (lead) full choke patterns. The established cylinder choke or bore will produce the equivalent of a modified (lead) pattern.

Additional information concerning the use of steel shot is available from the ammunition companies.

WARNING !

1. Make sure the firearm is unloaded and the safety “ON” before you assemble/disassemble the chokes.
2. Under safety conditions (barrels empty, safety engaged), check whether the choke worked loose during use. In such a case, the choke must be tightened to the end by means of the choke wrench.
3. You should keep the chokes clean and free of any dust by cleaning them regularly.

Assembly & disassembly of the inner chokes:

1. Take one of the inner chokes of your choice. Place it inside barrel and by means of choke wrench; screw **(clockwise)** it to the end until it is completely tightened. **(15)**
2. To disassemble, unscrew **(counter-clockwise)** by means of choke wrench and remove it.

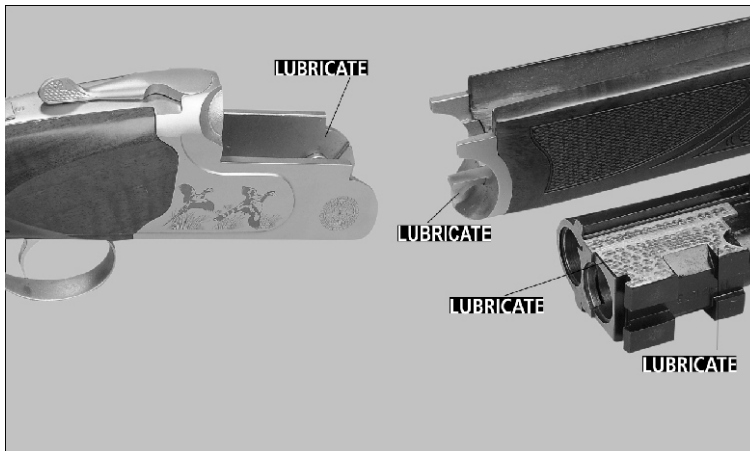
CARE, CLEANING AND LUBRICATION

WARNING !

Before cleaning or lubricating the firearm make sure it is unloaded and the safety 'ON'.

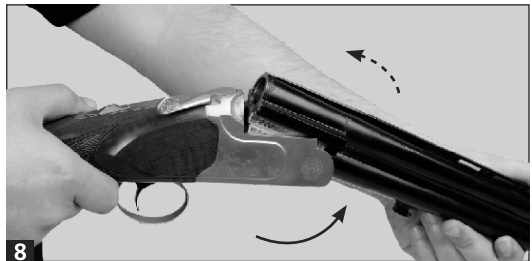
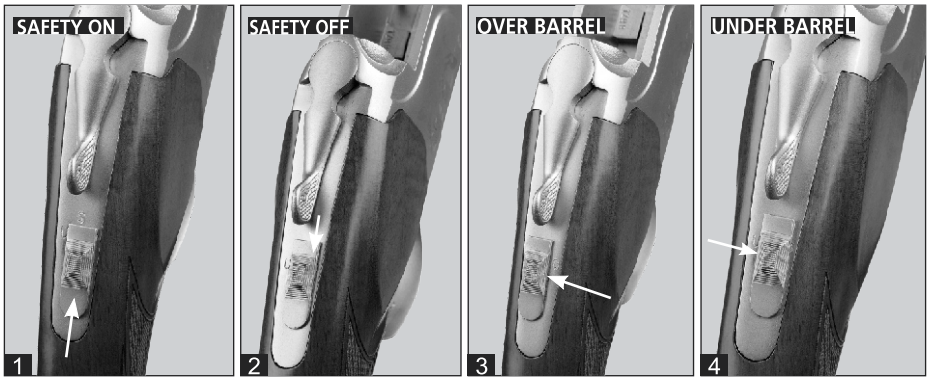
It is recommended to disassemble the firearm to clean and to lubricate it when grease or dirt particles accumulate with combustion residues. To have the best resistance against corrosion, it is necessary to clean and lubricate the firearm after each use, especially after use in wet and salty environment.

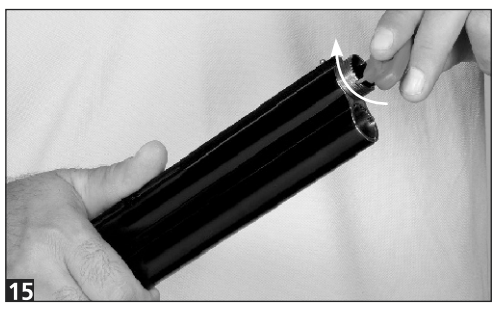
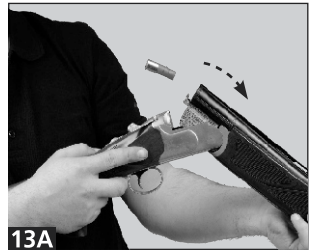
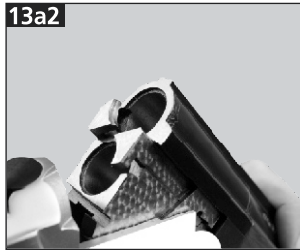
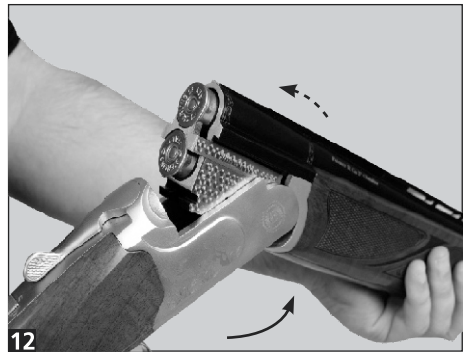
It is recommended to firmly oil frequently the monoblock, barrel hook, fore-end steel plate and internal surface of the receiver. Avoid excessive oiling of any part!



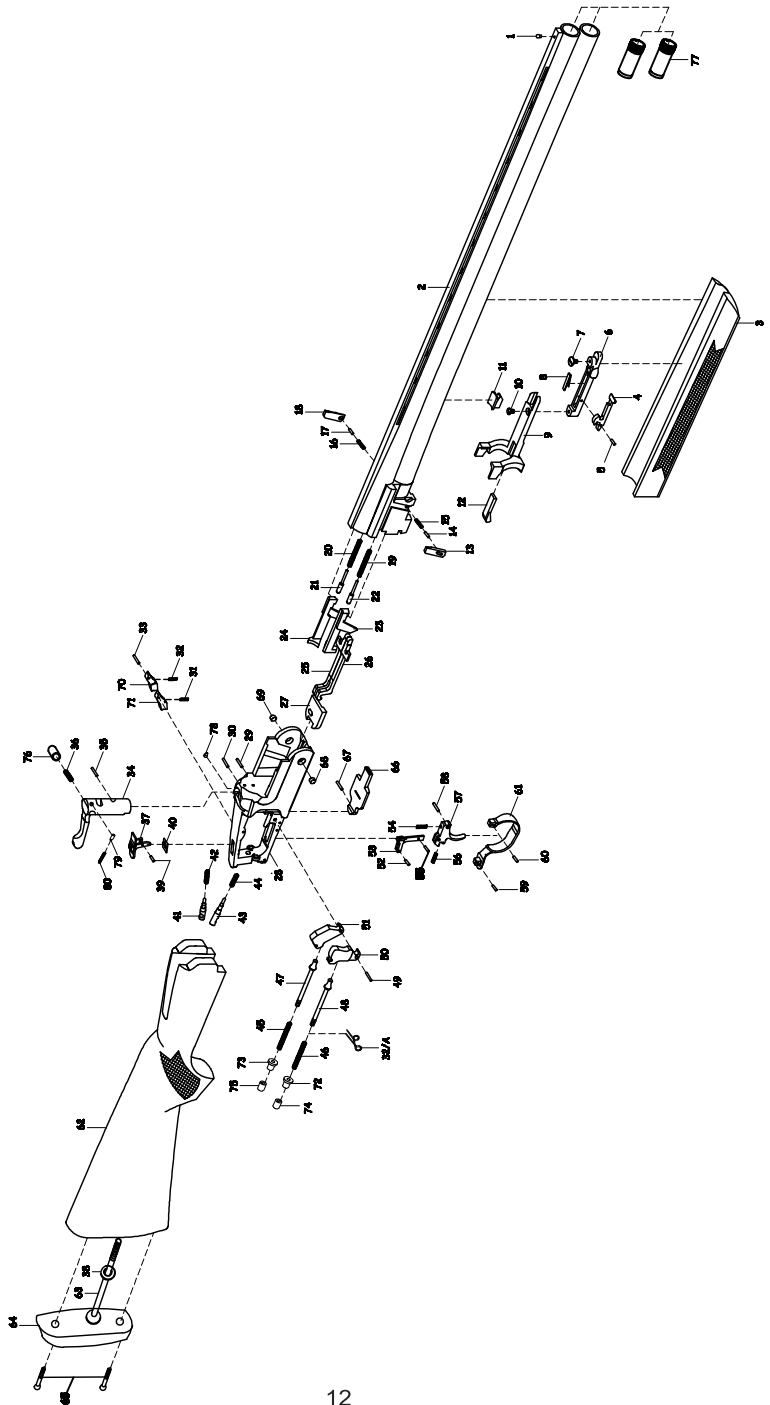
Materials and equipment necessary for cleaning and lubrication;

- Cleaning rod
 - Cotton bore patches
 - Brass bore brush
 - Powder solvent
 - Small soft brush
 - Good quality gun oil
- After use, to remove any powder and lead residue in the bore, scrub the barrel and chamber using the bore brush with powder solvent. Then swab the bore and the chamber with gun oiled cotton patches to protect from rust and corrosion.
- Any powder on the firing wall, barrel, etc. can be cleaned with a brush and powder solvent.
 - All external surfaces should be wiped down with light coat of rust preventative.
 - Avoid using too much solvent for bore cleaning, since prolonged or excess contact can damage the finish of the wood. Make sure to wipe away all the excess solvent and lubricant.





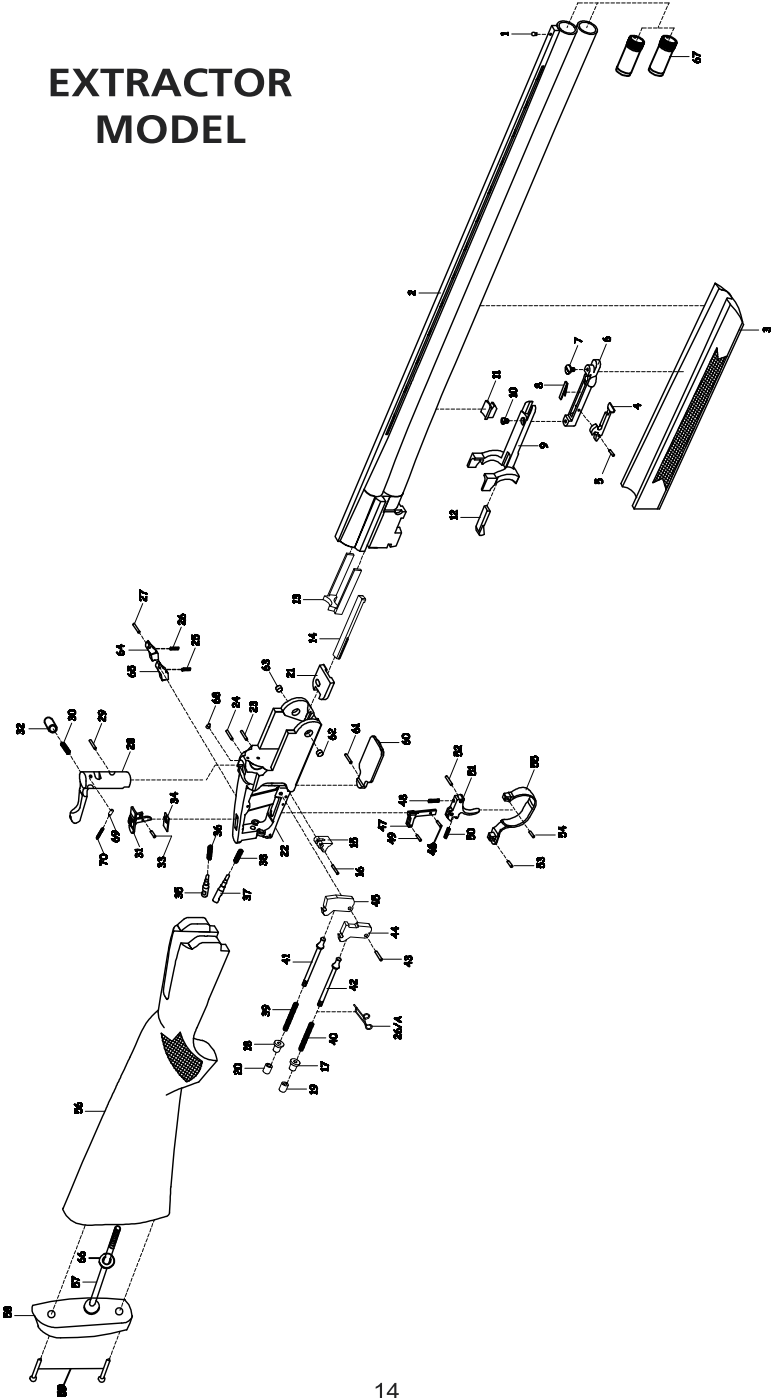
EJECTOR MODEL



EJECTOR PARTS LIST

- | | | | |
|------|--------------------------------------|----|------------------------------------|
| 1 | - Front Sight | 41 | - Top Firing Pin |
| 2 | - Barrel | 42 | - Top Firing Pin Spring |
| 3 | - Forearm | 43 | - Bottom Firing Pin |
| 4 | - Forearm Latch | 44 | - Bottom Firing Pin Spring |
| 5 | - Forearm Latch Pin | 45 | - Hammer Spring (Left) |
| 6 | - Forearm Latch Frame | 46 | - Hammer Spring (Right) |
| 7 | - Forearm Latch Frame Screw | 47 | - Left Hammer Spring Guide Rod |
| 8 | - Forearm Latch Frame Spring | 48 | - Right Hammer Spring Guide Rod |
| 9 | - Forearm Iron | 49 | - Hammer Pin |
| 10 | - Forearm Iron Screw | 50 | - Hammer (Right) |
| 11 | - Forearm Lug | 51 | - Hammer (Left) |
| 12 | - Forearm Bolt | 52 | - Transfer Block Pin |
| 13 | - Ejector Locking (Right) | 53 | - Transfer Block |
| 14 | - Ejector Locking Pin (Right) | 54 | - Trigger Spring |
| 15 | - Ejector Locking Pin Spring (Right) | 55 | - Selector Retaining Pin |
| 16 | - Ejector Locking Pin Spring (Left) | 56 | - Trigger Return Spring |
| 17 | - Ejector Locking Pin (Left) | 57 | - Trigger |
| 18 | - Ejector Locking (Left) | 58 | - Trigger Pin |
| 19 | - Ejector Spring (Right) | 59 | - Short Trigger Guard Pin |
| 20 | - Ejector Spring (Left) | 60 | - Long Trigger Pin |
| 21 | - Ejector Pin (Left) | 61 | - Trigger Guard |
| 22 | - Ejector Pin (Right) | 62 | - Stock |
| 23 | - Ejector (Right) | 63 | - Stock Bolt |
| 24 | - Ejector (Left) | 64 | - Recoil Pad |
| 25 | - Cocking Rod (Left) | 65 | - Recoil Pad Screw |
| 26 | - Cocking Rod (Right) | 66 | - Receiver Bottom Plate |
| 27 | - Blocker Plate | 67 | - Receiver Bottom Plate Pin |
| 28 | - Receiver | 68 | - Right Hinge Pin |
| 29 | - Bottom Firing Pin Retaining Pin | 69 | - Left Hinge Pin |
| 30 | - Top Firing Pin Retaining Pin | 70 | - Left Sear |
| 31 | - Right Sear Spring | 71 | - Right Sear |
| 32 | - Left Sear Spring | 72 | - Hammer Spring Pin Washer (Right) |
| 32/A | - Sear Hold Down Spring | 73 | - Hammer Spring Pin Washer (Left) |
| 33 | - Sear Pin | 74 | - Hammer Spring Pin Nut (Right) |
| 34 | - Top Lever | 75 | - Hammer Spring Pin Nut (Left) |
| 35 | - Top Lever Pin | 76 | - Top Lever Spring Plunger |
| 36 | - Top Lever Spring | 77 | - Choke |
| 37 | - Safety Selector | 78 | - Top Lever Detent Pin |
| 38 | - Stock Bolt Washer | 79 | - Top Lever Detent Pin Plunger |
| 39 | - Safety Pin | 80 | - Top Lever Detent Pin Spring |
| 40 | - Safety Spring | | |

EXTRACTOR MODEL



EXTRACTOR PARTS LIST

- | | | | |
|-----|------------------------------------|----|---------------------------------|
| 1 | - Front Sight | 36 | - Top Firing Pin Spring |
| 2 | - Barrel | 37 | - Bottom Firing Pin |
| 3 | - Forearm | 38 | - Bottom Firing Pin Spring |
| 4 | - Forearm Latch | 39 | - Hammer Spring (Left) |
| 5 | - Forearm Latch Pin | 40 | - Hammer Spring (Right) |
| 6 | - Forearm Latch Frame | 41 | - Left Hammer Spring Guide Rod |
| 7 | - Forearm Latch Frame Screw | 42 | - Right Hammer Spring Guide Rod |
| 8 | - Forearm Latch Frame Spring | 43 | - Hammer Pin |
| 9 | - Forearm Iron | 44 | - Hammer (Right) |
| 10 | - Forearm Iron Screw | 45 | - Hammer (Left) |
| 11 | - Forearm Lug | 46 | - Transfer Block Pin |
| 12 | - Forearm Bolt | 47 | - Transfer Block |
| 13 | - Extractor | 48 | - Trigger Spring |
| 14 | - Cocking Rod | 49 | - Selector Retaining Pin |
| 15 | - Cocking Lever | 50 | - Trigger Return Spring |
| 16 | - Cocking Lever Pin | 51 | - Trigger |
| 17 | - Hammer Spring Pin Washer (Right) | 52 | - Trigger Pin |
| 18 | - Hammer Spring Pin Washer (Left) | 53 | - Short Trigger Guard Pin |
| 19 | - Hammer Spring Pin Nut (Right) | 54 | - Long Trigger Pin |
| 20 | - Hammer Spring Pin Nut (Left) | 55 | - Trigger Guard |
| 21 | - Blocker Plate | 56 | - Stock |
| 22 | - Receiver | 57 | - Stock Bolt |
| 23 | - Bottom Firing Pin Retaining Pin | 58 | - Recoil Pad |
| 24 | - Top Firing Pin Retaining Pin | 59 | - Recoil Pad Screw |
| 25 | - Rear Sear Spring | 60 | - Receiver Bottom Plate |
| 26 | - Left Sear Spring | 61 | - Receiver Bottom Plate Pin |
| 26/ | A - Sear Hold Down Spring | 62 | - Right Hinge Pin |
| 27 | - Sear Pin | 63 | - Left Hinge Pin |
| 28 | - Top Lever | 64 | - Left Sear |
| 29 | - Top Lever Pin | 65 | - Right Sear |
| 30 | - Top Lever Spring | 66 | - Stock Bolt Washer |
| 31 | - Safety Selector | 67 | - Choke |
| 32 | - Top Lever Spring Plunger | 68 | - Top Lever Detent Pin |
| 33 | - Safety Pin | 69 | - Top Lever Detent Pin Plunger |
| 34 | - Safety Spring | 70 | - Top Lever Detent Pin Spring |
| 35 | - Top Firing Pin | | |



Legacy Sports International, Inc.
4750 Longley Lane, Suite 209
Reno, NV 89502
Phone: 1-800-553-4229
Fax: 1-775-828-0565