



POLYMER PISTOLS

SUPPLEMENT INSTRUCTION MANUAL

GENERAL SAFETY, OPERATING INSTRUCTIONS AND LIMITED WARRANTY

READ CAREFULLY BEFORE USING YOUR FIREARM

Important: Keep this manual with your firearm.

The information contained in this manual is useful, both for beginners and experienced shooters. In addition to important information about functioning, cleaning and care of the gun, the manual contains instructions that may be very helpful in shooting properly. The most important rule of safe gun handling is always keep the muzzle pointed in a safe direction!



POLYMER PISTOLS

TaurusUSA.com

[f/TaurusUSA](https://www.facebook.com/TaurusUSA)

[@taurususa](https://twitter.com/taurususa)

[i/TaurusUSA](https://www.instagram.com/TaurusUSA)

Supplement Instruction manual is for the following Taurus® Models.

- PT111 PRO / PT111 PRO Ti
- PT132 PRO
- PT138 PRO
- PT140 PRO
- PT145 PRO
- PT745 PRO
- PT24/7-9
- PT24/7-40
- PT24/7-45

CONTENTS

Firearms Safety	6
Firearms Safety Systems	8
Ammunition	15
Operating Instructions	20
Disassembly	23
Assembly	27
Care and Maintenance	29
Exploded View	30
Taurus® Service Policy	36






WARNING

The safety warnings in this booklet are important. By understanding the dangers inherent in the use of any firearm, and by taking the precautions described herein, you can safely enjoy your Taurus® firearm. Failure to follow any of these warnings may result in serious injury to you or others, as well as severe damage to the firearm or other property.

NOTES

SIGNAL WORDS AS DEFINED BY ANSI Z535.6 AND Z535.4 STANDARDS.

 DANGER	DANGER indicates a hazardous situation which, if not avoided, will result in death or serious injury.
 WARNING	WARNING indicates a hazardous situation which, if not avoided, could result in death or serious injury.
 CAUTION	CAUTION indicates a hazardous situation which, if not avoided, could result in minor or moderate injury.
NOTICE	NOTICE is used to address practices not related to physical injury.

Intentionally left blank

FIREARMS SAFETY

WARNING

When a firearm discharges, the bullet or shot can strike a person, resulting in death or serious bodily injury.

The three basic keys to safe handling of firearms:

- 1. KEEP YOUR FINGER OFF THE TRIGGER UNTIL YOU ARE READY TO FIRE.** If you maintain good trigger discipline, it is extremely unlikely the firearm will fire.
- 2. KEEP THE MUZZLE POINTED IN A SAFE DIRECTION.** Even if the firearm discharges, if the muzzle is pointed in a safe direction, no one will be injured.
- 3. NEVER TRUST ANY SAFETY MECHANISM.** If you adopt the attitude that you will not trust any safety mechanism, you will be vigilant about keeping your finger off the trigger and keeping the muzzle pointed in a safe direction.

WARNING - KNOW YOUR TARGET

Never fire at targets at close range. Ricochets can and do cause death or serious bodily injury. What constitutes “close range” depends on many factors including target material, bullet caliber and angle of impact.

KNOW WHAT IS BEHIND YOUR TARGET. Unless you are shooting into a bullet trap designed to capture the type of ammunition you are firing, projectiles may pass through the target and strike anyone or anything beyond. Bullets can travel miles.

ALWAYS WEAR HEARING PROTECTION. Firearms are loud. The sound they generate is greater indoors. Repeated exposure to loud noises can cause deafness. Hearing protection is rated by decibel reduction. Look for “dB” reduction of 30 or more when purchasing ear protection. Modern ear protection can allow normal hearing until the sound from the discharge reaches the ear. Layering hearing protection, for example, wearing 30db rated foam plugs inside or 20db rated ear muffs, significant protection can be achieved.

ALWAYS WEAR EYE PROTECTION. In normal operation, firearms emit hot high-velocity gases, particles and metal. These materials flying into your eye can cause blindness. Protect your vision with proper eye protection. Any eye protection may be better than none, but look for ANSI Z87.1-2003 certified eyewear for the best protection.

NEVER HANDLE FIREARMS WHILE UNDER THE INFLUENCE OF DRUGS OR ALCOHOL. Firearms are dangerous. Handling firearms while impaired by drugs or alcohol is foolhardy and may result in serious injury or death. This warning includes prescription drugs that contain a warning about using machinery or driving while taking the medication.

MODIFIED FIREARMS ARE DANGEROUS, AND USE CAN RESULT IN SERIOUS INJURY OR DEATH. “Trigger jobs,” polishing original components or installing aftermarket parts can cause a firearm to function in ways different than intended. Some such work may also be illegal.

DAMAGED FIREARMS ARE DANGEROUS, AND USE CAN RESULT IN SERIOUS INJURY OR DEATH. Repairs should always be made by a qualified gunsmith or by a factory-authorized repair site. Work done by those unfamiliar with the design can cause a firearm to function in ways different than intended.

NEVER ATTEMPT TO DISASSEMBLE OR CLEAN A LOADED FIREARM. DOING SO CAN RESULT IN SERIOUS BODILY INJURY OR DEATH. How often have we heard “But it went off while I was cleaning it!” or, “I did not know it was loaded!” or, “It was jammed, and I tried to take it apart!”?

IF A FIREARM GOES OFF, THERE WAS A ROUND OF AMMUNITION IN THE CHAMBER. Period. “Clear” (or empty) the firearm of all ammunition before disassembling or cleaning.

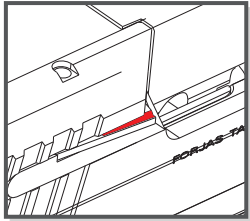
As owner of your new Taurus® firearm, you are responsible for (1) keeping your finger off the trigger, (2) pointing the muzzle in a safe direction, (3) removing the magazine, (4) pulling the slide to the rear and locking it back and (5) looking and feeling in the magazine well and chamber to confirm the pistol is empty. An empty firearm cannot fire.

FIREARMS SAFETY SYSTEMS

Firearms safety is supported by a system. With your pistol, the system is made up of the following:

1. You! Your involvement in safety cannot be overemphasized. No safety component can keep your finger off the trigger and the muzzle pointed in a safe direction. Also, you are the key to never trusting any of the mechanical parts of the safety system.

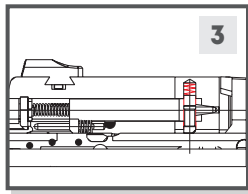
2. Loaded chamber indicator. When a cartridge is loaded in the chamber, the loaded chamber indicator protrudes from the right side of the slide just behind the ejection port, and its surface can be seen or felt without the need for pulling the slide back to check the chamber.



WARNING

The loaded chamber indicator should never be used as a substitute for visually checking or feeling for an empty chamber with your finger when "clearing" or emptying a pistol.

3. Firing Pin Block. The firing pin block interferes with the forward travel of the firing pin until the trigger is pulled. Like a trigger safety, pressing the trigger moves this safety component from its "safe" (blocking)



4. Memory Pad. It is important to keep your finger off the trigger until you are ready to press the trigger and fire the pistol. If you keep your finger off the trigger you will not press it by accident and fire the pistol before you are ready to do so, thereby avoiding accidents. The Memory Pad gives you a consistent place to put your trigger finger off the trigger, but in a ready position.

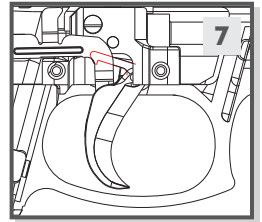
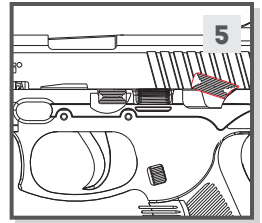
5. Manual Safety. Always use the manual safety. You paid for it, use it. When you need it to work, it needs to be all the way in the Safe position, not half way or at some other point in its travel. Don't play with the manual safety and you will avoid accidents.

6. Trigger Guard. This is a physical obstruction that helps prevent unintended pressing of the trigger or trigger safety. Do not modify the trigger guard.

7. Trigger Lock. This device is designed to preclude the backward movement of the trigger so as to prevent an accidental discharge in case the firearm is dropped. The system is disengaged when the trigger is pulled to the rear.

8. This Manual. Taurus intends for you to use this manual to learn about your pistol and to help you use your pistol safely. If you use the manual, you will be a long way toward being a knowledgeable and safe firearms owner.

9. On Line Resources. TaurusUSA.com hosts a library of videos concerning safety and related issues. This library is being added to and revised. Please visit the site and take advantage of what is available there as part of your education regarding using your Taurus pistol in a safe fashion.



PISTOL AND REVOLVER SIZE AND SAFETY

The selection of a revolver versus a pistol as well as the size, caliber and magazine capacity of a handgun are personal choices. There are many choices to be made, and there are advantages and disadvantages for each. When selecting a pistol, size has safety implications because of the way pistols are loaded.

Generally speaking, smaller handguns may require more attention to be handled safely than medium or full-size handguns. This is because their small size makes it easier to point the muzzle at your hand or to “sweep” (swing the muzzle across your body) yourself or others in ordinary handling.

When chambering a round, we recommend pulling the slide to the rear by gripping the rear of the slide, with the muzzle pointed straight and away from your body and in a safe direction.

SAFE CARRY CONDITION

“Safe Carry Condition” is the most ready-to-fire condition that the user feels is reasonable under the circumstances. Generally, we believe that Taurus® pistols should be carried with a full magazine and an empty chamber. Under most circumstances, this provides the best balance of readiness and safety. On the plus side, if the chamber is empty, unintended discharges are minimized. However, the slide must be manipulated to load a round in the chamber. In emergency circumstances, this can be difficult to do safely and correctly.

If the user believes that he or she is faced with an increased threat, chambering a round is appropriate. For safety reasons, this should be done beforehand with the muzzle pointed in a safe direction, your finger off the trigger and on the Memory Pad. If equipped, place the manual safety in the “safe” position. How do you know you may be going into a more dangerous situation? That depends. If, for example, you carry cash to deposit after a business closing, this may well qualify. If a domestic partner is actively threatening you, this may qualify as well.

“Safe Carry Condition” is a judgment call and must be made by the user. Some users routinely face greater threats than others. Users must be aware of their situation and circumstances. Errors in judgment can have dire and tragic outcomes if firearms are present.

CARRYING FIREARMS

Carrying a firearm can be dangerous. Carrying a firearm makes it more difficult to control the muzzle and makes it more likely that the firearm can be dropped or bumped causing the firearm to fire.

In almost all circumstances, it is safest to carry a handgun in a holster designed for that specific handgun. Carrying a handgun in a pocket without a specific designed In-Pocket Holster or a trigger shield or in a waist band without a belt clip is always a last choice. Carrying any handgun in a holster that fits the firearm and style of carry should prevent it from accidentally falling and you from losing control or the muzzle.

Except in rare high-threat circumstances, carry your pistol with a full magazine and an empty chamber. If the chamber is empty, the pistol cannot fire.”



WARNING - CARRYING

Do not carry your firearm in any way that might let it fall or be bumped. If a firearm falls or is bumped, it may fire.



WARNING - CARRYING

Always review and follow the holster or luggage manufacturer’s instructions or the firearm may fall or be bumped and fire.

FIREARMS STORAGE AND GUN LOCKS

How you secure your firearms is a personal choice based on the unique circumstances in your home, business or vehicle and the laws of the state where your firearm is located. Any choice you make about securing your firearms will present advantages and disadvantages. It is up to you to weigh those advantages and disadvantages and choose which security method is best for you and those around you.



WARNING - LOCKING

Never lock a firearm with a round of ammunition in the chamber. Unlocking a loaded firearm makes it more difficult to maintain trigger discipline and to keep the muzzle pointed in a safe direction.



WARNING

Securing your firearm may inhibit access in a defensive situation and may result in injury or death.



WARNING

Failure to secure a firearm may result in injury or death. Properly securing a firearm means storing your firearm unloaded, decocked and securely locked, with all ammunition in a separate location.

THE TAURUS SECURITY SYSTEM®

Your pistol is equipped with the Taurus Security System (TSS). This system is intended to give the user a “built-in locking system” for the firearm. You may, of course, secure your pistol in any way you see fit.

If you use the TSS:

- Point the pistol in a safe direction and keep your finger off the trigger.
- Remove the magazine and ensure it is empty.
- Pull the slide to the rear and check to see that the chamber is empty.
- Re-insert the empty magazine and pull the trigger to de-energize the striker.
- Insert the TSS key in the lock and turn the key clockwise to engage. The lock now protrudes so you can see and feel that it is engaged.

Engagement (secure)

- Insert the **key** into the mechanism and **turn clockwise** until a click is felt or heard.
This engages the TSS.
- The action is locked in place and cannot function.

Disengagement (ready-to-fire)

- To place the pistol in a firing condition, insert the **key** into the mechanism and turn it **counterclockwise** until a click is felt or heard.
- The pistol can now be fired.

NOTICE

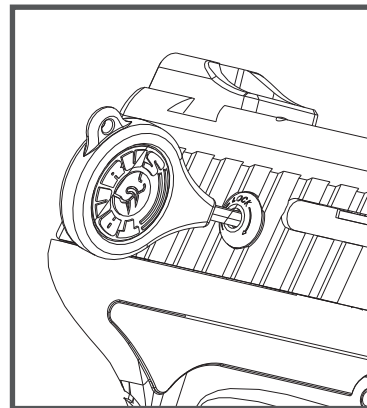
Never engage the TSS with the slide in the open rear position. This will result in permanent damage to your pistol.

Unlocking the pistol with the TSS

To deactivate the TSS, rotate the key counterclockwise until the lock button is level with the grip surface.

! WARNING

Never attempt to engage the TSS on a Taurus® pistol with a cartridge in the chamber.



AMMUNITION

WARNING

Using the wrong ammunition in your pistol can result in serious bodily injury and damage to your pistol. Make certain the ammunition you load in the magazine is the same caliber as is marked on the pistol.

WARNING - AMMUNITION AND INDUSTRY STANDARDS

Use only clean, dry factory-loaded ammunition. Old, damaged, wet or oily ammunition may fire at pressures higher than industry standard, causing injury to you and bystanders or damage to your pistol.

Do not use reloaded ammunition in your pistol. Its firing pressures are unknown and may well exceed industry standard, causing injury to you and bystanders or damage to your pistol.

Odd sounds are signs of trouble. If a round "does not sound right" when it goes off, stop firing right away. A bullet may be stuck in the barrel. Firing the pistol in this condition may cause pressures higher than industry standard, causing injury to you and bystanders or damage to your pistol.

If you hear any odd sounds when firing your pistol, stop firing, clear the pistol and "field strip" (or disassemble) the pistol in accordance with the procedures listed in this manual. Once the barrel is removed from the slide, look down the bore. If you do not see light, there is something stuck in the bore. Do not fire the pistol again, and take the pistol to a competent gunsmith or contact the Taurus® Service department at 800-327-3776.

WARNING - LEAD EXPOSURE

Discharging firearms in poorly ventilated areas, cleaning firearms or handling ammunition may result in exposure to lead and other substances known to the state of California to cause birth defects, reproductive harm and other serious physical injury. Have adequate ventilation at all times. Wash hands thoroughly after exposure with soap and cold water.

SHOOTING OR CLEANING GUNS MAY EXPOSE YOU TO LEAD

WARNING

"+P" ammunition can be dangerous. There is a detailed discussion about "+P" and "+P+" ammunition on page 18 of this manual. Until you have read that information, do not fire any ammunition marked "+P" in your pistol.

WARNING

Never fire ammunition marked "+P+" in your pistol. It does not comply with industry standards as to chamber pressures.

WARNING

It is DANGEROUS to fire "+P+" ammunition in any Taurus® firearm, and doing so may result in serious bodily injury or death. The Sporting Arms and Ammunition Manufacturers Institute (SAAMI) does not recognize any "+P+" ammunition at all. These loads operate at unknown pressures.

There are only four calibers that can carry a “+P” rating from SAAMI. They are 38 Special +P, 9mm Luger +P, 38 Super Automatic and 45 Automatic +P. There are no other SAAMI approved “+P” loads. Any ammunition in any other caliber marked “+P” is not SAAMI compliant, may be dangerous and should not be used.

Only fire SAAMI rated Plus P (“+P”) ammunition in Taurus® models designated by Taurus for +P use as below. **Firing +P ammunition in other Taurus products may be dangerous and can result in serious bodily injury or death.**

Model 85 small-frame revolver in 38 Special.

Model 850 small-frame revolver in 38 Special.

Model 851 small-frame revolver in 38 Special.

Model 85 Polymer small-frame revolver in 38 Special.

Model 82 medium-frame revolver in 38 Special.

Model 817 compact frame (tracker) revolver in 38 Special.

All firearms chambered in 38 Super Automatic.

All firearms chambered in 45 Automatic (ACP).

All firearms chambered in 9mm Luger.

NOTICE

Even if your Taurus® firearm is rated for Plus-P (“+P”) ammunition, such ammunition generates pressures significantly in excess of the pressures associated with standard ammunition. Such pressures may affect the useful life of the firearm or exceed the margin of safety built into many firearms. Unless you need +P ammunition, do not use it, particularly for practice.

FIREARMS ARE NOT ALL ALIKE

Many makes and models of firearms might LOOK nearly the same. However, they differ widely in design, operation, and in the location and function of various controls. You may access the Taurus® website at TaurusUSA.com to view and print manuals.

“JAMS”

SOMETIMES A CARTRIDGE OR SHELL CASE MAY BECOME “JAMMED” OR STUCK IN THE PISTOL. TO CLEAR THE JAM, (1) POINT THE MUZZLE IN A SAFE DIRECTION, (2) KEEP YOUR FINGER OFF THE TRIGGER AND ON THE MEMORY PAD, (3) REMOVE THE MAGAZINE, THEN (4) PULL BACK THE SLIDE AND LOCK IT TO THE REAR. THE JAMMED CARTRIDGE OR CASE CAN NOW BE REMOVED BY SHAKING OR PICKING IT OUT.



WARNING - FIRING

The slide opens and shuts quickly while firing. Keep face and hands away from rear of slide. Hot brass is ejected quickly and can burn you. Always wear shooting glasses, hat with brim, and hearing protection.



WARNING - ANY GUN MAY FIRE IF DROPPED

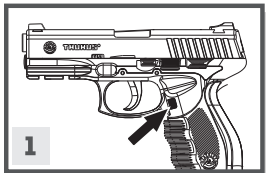
If dropped or struck, the pistol may fire.



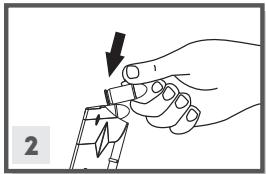
WARNING

If dropped or struck the firearm should be inspected by a trained armorer/gunsmith for a complete function check. While the firearm was dropped or struck, mechanisms, including automatic safeties, may not function as intended resulting in accidental death or serious injury.

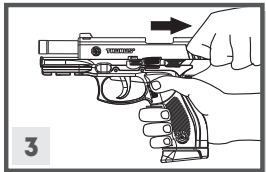
OPERATING INSTRUCTIONS



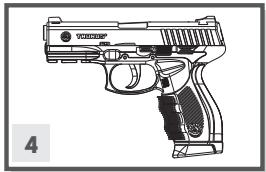
1. To remove the magazine, press the **magazine release button**, located near the **trigger guard**, with your thumb.



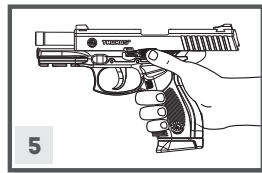
2. Hold the **magazine** with one of your hands and with your other hand insert the cartridges one at a time, pressing them down and to the rear. Insert the **magazine** into the pistol until it is held by the **magazine catch**.



3. Hold the pistol with one hand keeping your finger away from the **trigger**. With the other hand pull the **slide** to its limit and release it. You may depress the **slide catch**, and the **slide** will go forward under the **recoil spring** pressure and will insert one cartridge in the chamber.



4. The pistol is now ready to fire by pulling the **trigger**. After firing, the **slide** will recoil from gas pressure and will eject the empty cartridge case and feed another cartridge into the chamber. The pistol will be ready to fire again.



5. After the last round, the **slide** will remain in the open position held by the **slide catch**. To make it return to its rest position, press the **slide catch** downward just above the **left grip**.

WARNING

These Taurus pistols do not have a magazine disconnect (safety). They will fire the round in the chamber with the magazine removed.

WARNING

The manual safety lever must be in fully engaged for the manual Safety to work.

WARNING

The firearm should never be operated with the manual safety lever between the "on" and "off" positions. Failure to make certain the manual safety lever is all the way "on" can result in accident, serious bodily injury or even death.

CAUTION

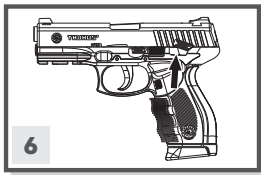
Failure to make sure the manual safety lever is all the way in the "off" position will result in damage to the pistol.

WARNING - FIRING

The slide opens and shuts quickly while firing. Keep face and hands away from rear of slide. Hot brass is ejected quickly and can burn you. Always wear shooting glasses, hat with brim, and hearing protection.

WARNING - ANY GUN MAY FIRE IF DROPPED

If dropped or struck, the pistol may fire.

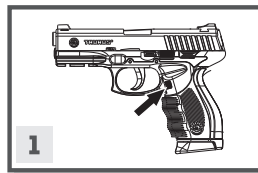


6. If you want to stop shooting before firing the last cartridge of a **magazine**, push the safety lever in the up (on) position.

DISASSEMBLY

WARNING

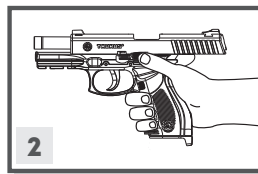
Always wear eye protection that is specified for use with firearms (ANSI Z87.1+) every time you handle your firearm for cleaning and maintenance.



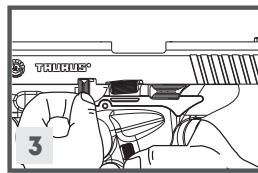
1. Remove the **magazine** by pressing the **magazine release button**; be sure that the chamber is **empty**.

WARNING

After removing the magazine, always check the chamber and make sure it is empty.

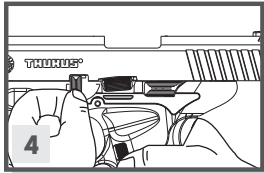


2. Pull **slide** fully to the rear and push up the **slide catch lever**.



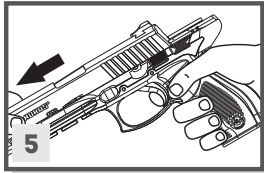
3. With your left thumb, rotate the **slide disassembly latch** clockwise until it stops.

Use the key for Taurus Security System to gently push the pin from the right side of the pistol.

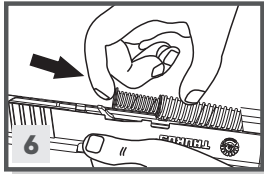


4. With your left hand, pull the **slide disassembly latch** or **down pin** out of frame.

Alternatively, release the slide catch, pull back the slide again and push the slide catch lever up. This movement frees the **disassembly latch**.



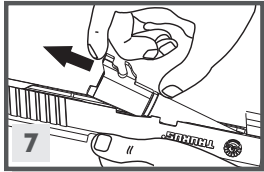
5. Carefully release the slide catch, letting the slide go forward, then pull the trigger and pull the slide off the frame.



6. Carefully remove the **slide spring** and **guide** from its position on the bottom of the **barrel**. The **spring** is under compression so it must be kept under control until removed.

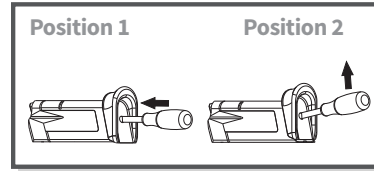
WARNING

Take care to prevent the forcible ejection of the slide spring assembly and the compressed slide spring assembly.



7. Remove the **barrel** from the **slide** by pulling up and to the rear.

MAGAZINE DISASSEMBLY

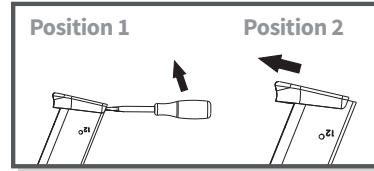


A) Use a **punch** to press in on **magazine spring seat/clip**.

B) Slide the **magazine floor plate** toward the front of the magazine according to Position 1 and 2.

C) Withdraw **magazine spring plate** and **magazine spring** from **magazine body**. Turn magazine upside down and remove magazine follower.

D) Assemble in reverse order.



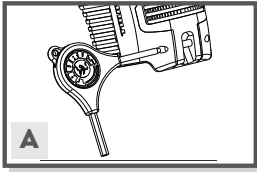
WARNING

Take care to prevent the forcible ejection of the magazine spring plate and compressed magazine spring.

WARNING

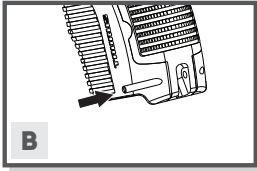
Always wear eye protection that is specified for use with firearms (ANSI Z87.1+) every time you handle your firearm for cleaning and maintenance.

BACKSTRAP DISASSEMBLY



The main function of the backstrap is to assure the users comfortability to reach the trigger in the proper position for a correct trigger press. There are three backstrap sizes available, with easy replacement, according to the instructions below:

A) REMOVAL: using the **pin-extractor** (included in packing), move the **backstrap pin** away from the **grip**. After that, remove the backstrap, pulling it towards the bottom.



B) REPLACEMENT: to assemble the **backstrap**, adjust it to the **grip** and insert the **pin**. A tool can be used to make the assembling process easier.

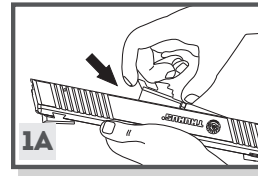
MAGAZINE IS REMOVED AND THE PISTOL IS CLEAR.

WARNING

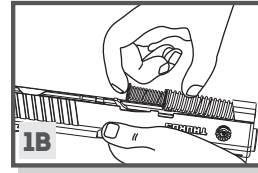
No further disassembly is recommended unless done by a skilled gunsmith.

ASSEMBLY

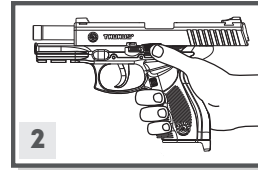
In order to reassemble the pistol, proceed by reversing the disassembly procedure:



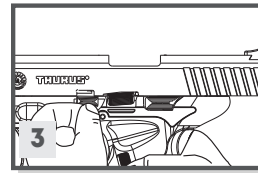
1. Replace the barrel in the slide pushing it to the rearward position. Insert the spring/guide rod sub-assembly into the slide over the barrel, compressing the spring slightly to get it into position.

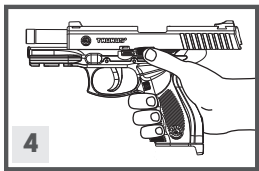


2. The **slide** should be mounted on the frame and pulled fully to the rear and the **slide catch** must be moved upward to hold the **slide** to the rear.

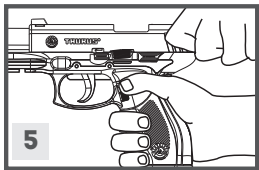


3. When reinstalling the **slide disassembly latch** or **takedown pin**, you must make sure that the barrel is fully forward in the slide so that when you insert the latch, with the lever pointing to the rear, the horizontal round part of the latch must be pushed through the frame and the mating portion of the bottom of the barrel. Once these parts have been lined up, and you gently push the latch in, a click will be heard indicating that the latch pin is secured in place.





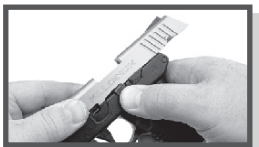
4. The **slide catch** then can be depressed which allows the **slide** to go forward.



5. You should cycle the **slide** several times, with no magazine inserted and no rounds in the chamber, to insure that the barrel/slide/frame relationship is correct.



ADVICE: The slide may stick on the frame before going fully to the rear, or the barrel may ride with it to the rear. Begin again and press down with the finger onto that rear portion of the barrel accessible through the ejection port.



When the barrel depresses and locks to the frame, continue moving the slide fully to the rear and engage the slide catch lever

CARE AND MAINTENANCE

The firearm may be cleaned and lubricated under normal conditions with the disassembly steps described in pages 23.

In order to keep a firearm safe to use, it must be kept clean and covered with a light film of good quality oil to prevent corrosion. The barrel bore should be cleaned and left free of debris.

For normal cleaning, rub the pistol with a lightly oiled cloth. In the same way, proceed with the bore of the barrel. Excess oil should be removed. Dust should be removed from all crevices with a small clean brush.

Please note that a firearm with laser should not be cleaned in a well or supersonic machine that submerges the firearm as this can damage the laser system.

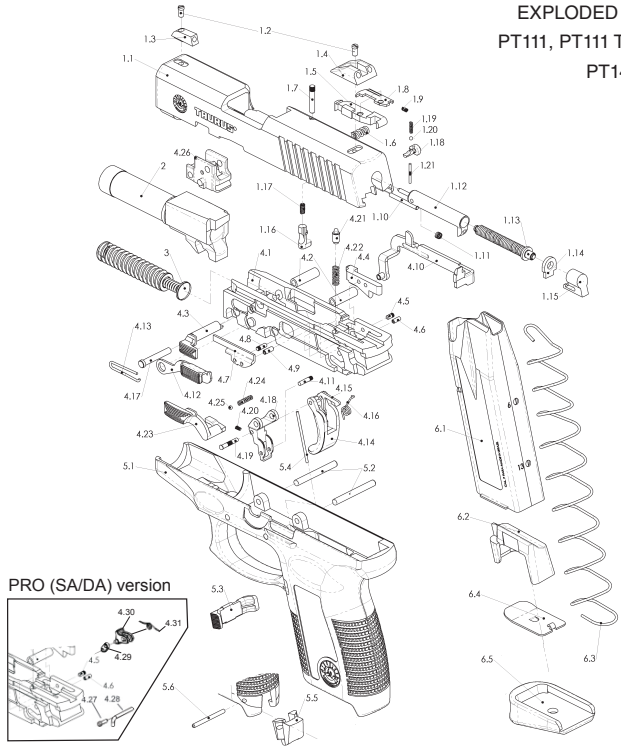


WARNING

Before cleaning, (1) point the muzzle in a safe direction, (2) keep your finger off the trigger and on the memory pad, (3) remove the magazine, then (4) pull back the slide and lock it to the rear.

EXPLODED VIEW

EXPLODED VIEW OF MODELS
PT111, PT111 Ti, 132, PT138, PT140,
PT145 & PT745



	PT111 PRO PT111 PRO Ti	PT132 PRO	PT138 PRO	PT140 PRO	PT145 PRO	PT745 PRO
Caliber	9mm	.32 ACP	.380 ACP	.40	.45 ACP	.45 ACP
Mechanism	Striker					
Action	Double action only or single and double action					
Number of Shots	12+1	10+1	12+1	10+1	10+1	6+1
Barrel	3.30"	3.30"	3.30"	3.30"	3.30"	3.30"
Total Length	6.00"	6.00"	6.00"	6.00"	6.10"	6.10"
Weight	20.1 oz. 16.22 oz.	20.4 oz.	20.8 oz.	21.01 oz.	22.22 oz.	22 oz.
Front Sight	Square, dovetailed to slide					
Rear Sight	Square notch, dovetailed to slide					
Grips	Polymer					
Finish	Blue, Stainless or Titanium Shadow Gray (PT111Ti only)					

NOTICE

Your purchase and/or receipt of these full capacity magazines is dependent on the provisions of your state and local laws. Availability of such magazines is subject to federal law.

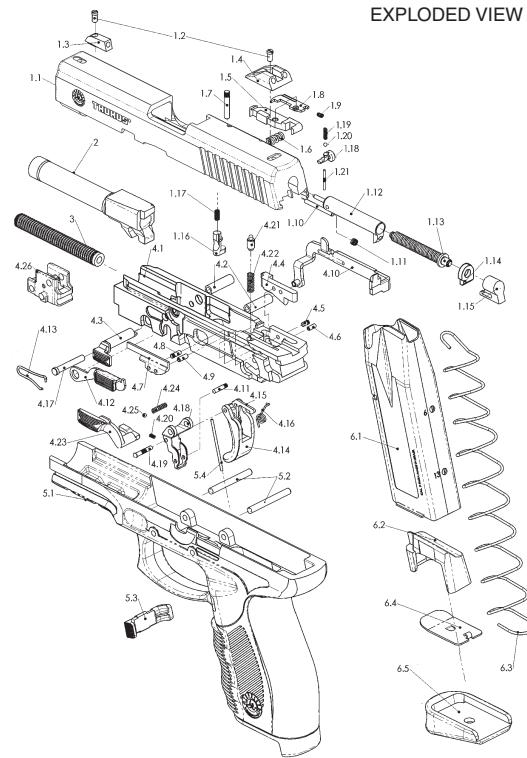
PART LIST

MODELS PT111, PT111 Ti, 132, PT138, PT140, PT145 & PT745

- | | | |
|---|--|------------------|
| 1. SLIDE ASSEMBLY | 4.10 TRIGGER BAR | (a) DAO versions |
| 1.1 SLIDE | 4.11 TRIGGER BAR PIN | (b) SA versions |
| 1.2 REAR SIGHT SCREW/FRONT SIGHT SCREW | 4.12 SLIDE CATCH | |
| 1.3 FRONT SIGHT | 4.13 SLIDE CATCH SPRING | |
| 1.4 REAR SIGHT | 4.14 TRIGGER | |
| 1.5 EXTRACTOR | 4.15 TRIGGER SAFETY | |
| 1.6 EXTRACTOR SPRING | 4.16 TRIGGER SPRING | |
| 1.7 EXTRACTOR PIN | 4.17 TRIGGER PIN | |
| 1.8 LOADED CHAMBER INDICATOR | 4.18 TRIGGER SUPPORT | |
| 1.9 LOADED CHAMBER INDICATOR SPRING | 4.19 TRIGGER SUPPORT PIN | |
| 1.10 FIRING PIN GUIDE | 4.20 TRIGGER SUPPORT SPRING | |
| 1.11 FIRING PIN RETURN SPRING | 4.21 SLIDE RETAINER (a) | |
| 1.12 FIRING PIN | 4.22 SLIDE RETAINER SPRING (a) | |
| 1.13 CAPTIVE FIRING PIN SPRING ASSEMBLY | 4.23 MANUAL SAFETY (OPTIONAL) | |
| 1.14 FIRING PIN RETAINING | 4.24 MANUAL SAFETY SPRING (OPTIONAL) | |
| 1.15 SLIDE CAP | 4.25 MANUAL SAFETY SPRING BALL (OPTIONAL) | |
| 1.16 FIRING PIN LOCK | 4.26 CENTRAL SUPPORT (PT 140 AND PT145 ONLY) | |
| 1.17 FIRING PIN SAFETY SPRING | 4.27 LINK PIVOT (b) | |
| 1.18 KEY LOCK | 4.28 SEAR PIN (b) | |
| 1.19 KEY LOCK SPRING | 4.29 LINK (b) | |
| 1.20 KEY LOCK BALL | 4.30 SEAR (b) | |
| 1.21 KEY LOCK PIN | 4.31 SEAR SPRING (b) | |
| 2 BARREL | 5. GRIP ASSEMBLY | |
| 3 CAPTIVE RECOIL SPRING ASSEMBLY | 5.1 GRIP | |
| 4. FRAME ASSEMBLY | 5.2 GRIP PIN | |
| 4.1 FRAME | 5.3 MAGAZINE RELEASE | |
| 4.2 FRAME BUSHING | 5.4 MAGAZINE RELEASE SPRING | |
| 4.3 DISASSEMBLING LATCH | 5.5 LANYARD LOOP | |
| 4.4 TRIGGER BAR RAMP | 5.6 LANYARD LOOP PIN | |
| 4.5 TRIGGER BAR RAMP PIN | 6. MAGAZINE ASSEMBLY | |
| 4.6 TRIGGER BAR RAMP PIN - ELASTIC | 6.1 MAGAZINE BODY | |
| 4.7 EJECTOR | 6.2 FOLLOWER | |
| 4.8 EJECTOR PIN | 6.3 MAGAZINE SPRING | |
| 4.9 EJECTOR PIN - ELASTIC | 6.4 MAGAZINE SPRING PLATE | |
| | 6.5 MAGAZINE BOTTOM | |

EXPLODED VIEW

EXPLODED VIEW OF MODEL 24/7 (DAO)



	PT24/7-9	PT24/7-40	PT24/7-45
Caliber	9mm PARA.	.40	.45 ACP
Mechanism	Striker		
Action	Double action only		
Number of Shots	17+1 10+1	15+1 10+1	12+1 10+1
Barrel	4.20"	4.20"	4.20"
Total Length	7.16"	7.16"	7.16"
Weight	27.6 oz	27.1 oz	26.8 oz
Front Sight	Square, dovetailed to slide attached with set screw		
Rear Sight	Square notch, dovetailed to slide attached with set screw		
Grips	Polymer or Polymer with Overmold Rubber Grip		Polymer Grip
Finish	Blue or Stainless Slide		

NOTICE

Your purchase and/or receipt of these full capacity magazines is dependent on the provisions of your state and local laws. Availability of such magazines is subject to federal law.

PART LIST

MODEL PT 24/7

- | | | |
|---|---------------------------------|------------------|
| 1. SLIDE ASSEMBLY | 4.9 EJECTOR PIN - ELASTIC | (a) DAO versions |
| 1.1 SLIDE | 4.10 TRIGGER BAR | (b) SA versions |
| 1.2 REAR SIGHT SCREW/ FRONT SIGHT SCREW | 4.11 TRIGGER BAR PIN | |
| 1.3 FRONT SIGHT ASSEMBLY | 4.12 SLIDE CATCH | |
| 1.4 REAR SIGHT | 4.13 SLIDE CATCH SPRING | |
| 1.5 EXTRACTOR | 4.14 TRIGGER | |
| 1.6 EXTRACTOR SPRING | 4.15 TRIGGER SAFETY | |
| 1.7 EXTRACTOR PIN | 4.16 TRIGGER SPRING | |
| 1.8 LOADED CHAM BER INDICATOR | 4.17 TRIGGER PIN | |
| 1.9 LOADED CHAM BER INDICATOR SPRING | 4.18 TRIGGER SUPPORT | |
| 1.10 FIRING PIN GUIDE | 4.19 TRIGGER SUPPORT PIN | |
| 1.11 FIRING PIN RETURN SPRING | 4.20 TRIGGER SUPPORT SPRING | |
| 1.12 FIRING PIN | 4.21 SLIDE RETAINER (a) | |
| 1.13 CAPTIVE FIRING PIN SPRING ASSEMBLY | 4.22 SLIDE RETAINER SPRING | |
| 1.14 FIRING PIN RETAINING | 4.23 M ANUAL SAFETY | |
| 1.15 SLIDE CAP | 4.24 M ANUAL SAFETY SPRING | |
| 1.16 FIRING PIN LOCK | 4.25 M ANUAL SAFETY SPRING BALL | |
| 1.17 FIRING PIN SAFETY SPRING | 4.26 CENTRAL SUPPORT | |
| 1.18 KEY LOCK | 4.27 LINK PIVOT (b) | |
| 1.19 KEY LOCK SPRING | 4.28 SEAR PIN (b) | |
| 1.20 KEY LOCK BALL | 4.29 LINK (b) | |
| 1.21 KEY LOCK PIN | 4.30 SEAR (b) | |
| 2 BARREL | 4.31 SEAR SPRING (b) | |
| 3 CAPTIVE RECOIL SPRING ASSEMBLY | 5. GRIP ASSEMBLY | |
| 4. FRAME ASSEMBLY | 5.1 GRIP | |
| 4.1 FRAME | 5.2 GRIP PIN | |
| 4.2 FRAME BUSHING | 5.3 MAGAZINE RELEASE | |
| 4.3 DISASSEMBLING LATCH | 5.4 MAGAZINE RELEASE SPRING | |
| 4.4 TRIGGER BAR RAMP | 6. MAGAZINE ASSEMBLY | |
| 4.5 TRIGGER BAR RAMP PIN | 6.1 MAGAZINE BODY | |
| 4.6 TRIGGER BAR RAMP PIN - ELASTIC | 6.2 FOLLOWER | |
| 4.7 EJECTOR | 6.3 MAGAZINE SPRING | |
| 4.8 EJECTOR PIN | 6.4 MAGAZINE SPRING PLATE | |
| | 6.5 MAGAZINE BOTTOM | |
| | 7 LANYARD LOOP | |

TAURUS® SERVICE POLICY

Should your firearm require adjustment or repair contact our Customer Care department at 800-327-3776.

Please follow these suggestions to expedite service in the United States to return any firearm to us for adjustment or repair.

1. Federal law permits you to return your firearm to the manufacturer for service via common carriers. However, state and local firearms laws vary greatly; you should consult your local prosecuting attorney regarding any restrictive laws in your jurisdiction regarding your shipment or receipt of firearms. With the above in mind, it is strongly recommended that any firearm sent to us for repair be sent through a federally licensed dealer.

2. All firearms must be shipped to us prepaid. **WE WILL NOT ACCEPT COLLECT SHIPMENTS.**

3. Be sure to enclose a letter stating your name, address and telephone number as well as serial number, caliber and barrel length of your firearm. Also state the nature of trouble experienced or work required. Merely stating “defective” or “repair as necessary” is inadequate information. Be specific and enclose copies of any previous correspondence. Work (other than warranty repair) will bear minimum labor charge of \$35.00.

4. **FIREARMS MUST BE SHIPPED UNLOADED.** Double check the chambers of your firearm before shipping. If firearms are sent to Taurus in a loaded condition, we are required by law to notify the Federal authorities.

5. **DO NOT** include telescopic sights, custom grips, holsters, or other accessories with any firearm shipped to us.

PARTS

Firearms require periodic maintenance, inspection, adjustment and repair. If your pistol has a malfunction, be safe. Stop firing, “clear” and unload the pistol and take it to a competent gunsmith. Before shooting it again, contact our Customer Care department if you have any questions.

If water, sand, or other foreign matter gets in your pistol, field strip it (see pages 23) and thoroughly clean it. Failure to keep your firearm clean and in proper working order can be dangerous.

Our Customer Care department maintains a full stock of replacement parts for current Taurus firearms. Even though most gunsmiths have the knowledge, training and ability to make the necessary repairs to your firearm, the skill and workmanship of any particular gunsmith is totally beyond our control. Should your firearm require service, return it to our Customer Care department. Please refer to Repair Policy on the TaurusUSA.com website for information on the policy and shipping, or call 800-327-3776.

Remember, unauthorized adjustments or parts replacement can void your warranty. If you choose to have someone else do the required work, the purchaser and/or installer of parts must accept full responsibility for the correct adjustment and function of the firearm.

NOTES

IMPORTANT DO NOT DISCARD

KEEP THIS MANUAL WITH THE FIREARM
UPON CHANGE OF OWNERSHIP.

FORJAS TAURUS S.A.

Avenida do Forte, 511
CEP: 91.360-000
Porto Alegre - RS - Brasil
Fone: 55-51-30213000
Fax: 55-51-30213110

TAURUS INTERNATIONAL MANUFACTURING, INC.

16175 NW 49th Avenue
Miami, Florida 33014
Telephone: 305-624-1115
Fax: 305-624-1126

TAURUSUSA.COM
TAURUS.COM.BR

MKG50048. REV1

