

# 1911 A1/A2 PISTOL

## USER'S MANUAL



WARNING: READ THE INSTRUCTIONS AND SAFETY PRECAUTIONS IN THIS MANUAL CAREFULLY BEFORE USING THE FIREARM.



# ROCK ISLAND ARMORY

## USER'S MANUAL 1911A1/1911A2 PISTOL

### SAFETY, INSTRUCTION AND PARTS MANUAL



As a responsible owner of this firearm, you must read the instructions and warnings in this manual carefully. Before using this firearm, make sure you understand thoroughly the contents of this manual.

This manual must always be in the firearm's carrying case whenever the owner/user brings it or when it transfers ownership. A copy of this manual is available upon request from:

*ARMSCOR PRECISION INTERNATIONAL  
150 N Smart Way, Pahrump NV 89060  
E-mail: [support@armscor.com](mailto:support@armscor.com)*

# TABLE OF CONTENTS

- 1 Statement of Liability
- 1 State-By-State Warnings
- 2 Safety Precautions

## HEALTH & SAFETY

- 4 Tech Specs
- 5 Basic Parts (RIA M1911 PISTOLS)
  - GI Series*.....5 - 7
  - ROCK Series*.....8 - 10
  - TAC Series*.....11 - 13
  - MATCH Series*.....14 - 16

- 17 Parts Variance

- 22 Exploded Views
  - 45 GI Standard FS*.....22
  - 45 GI Standard FS High Cap*.....23
  - 45 GI Standard MS*.....24
  - 45 GI Standard CS*.....25
  - 45 ROCK Standard FS*.....26
  - 45 ROCK Standard CS*.....27
  - 45 ROCK Ultra FS*.....28
  - 45 ROCK Ultra CS*.....29
  - 45 TAC Ultra FS*.....30
  - 45 TAC Ultra FS High Cap*.....31
  - 45 PRO Match Ultra*.....32
  - 45 S&W PRO Match TAC Ultra High Cap*.....33

## ABOUT THE FIREARM

## MAINTENANCE

- Ammunition 34
- Loading The Mag 34
- Loading 34
- Loading The Pistol 34
- Unloading The Pistol 34
- Maintenance 35
- Field Stripping: Disassembly 35
- Frame Disassembly 36
- Disassembly of MS, CS & FS Bull Barreled Pistol 37
- Reassembly 37
- Basic Maintenance of your Firearm 37
- Care & Maintenance 38
- Storage and Transportation 39
- Ordering Parts 40
- Warranty 41
- Notes 42



## STATEMENT OF LIABILITY

This pistol is classified as a firearm or dangerous weapon. It is expressly understood that we assume no liability for its resale or unsafe handling under local laws and regulations. Armscor assumes no responsibility for physical injury or property damage resulting from either intentional or accidental discharge, or for the function of the firearm subjected to influence beyond their control. Armscor will honor no claims which may result from careless handling, unauthorized adjustments, defective or improper ammunition, corrosion or neglect. Examine your firearm carefully at the time of purchase. It should be forwarded immediately to the factory or its sales agent if any adjustment of any kind of required.

### State-By-State Warnings



#### CALIFORNIA STATE WARNING

*CHILDREN ARE ATTRACTED TO AND CAN OPERATE FIREARMS THAT CAN CAUSE SEVERE INJURIES OR DEATH. PREVENT CHILD ACCESS BY ALWAYS KEEPING FIREARMS LOCKED AWAY AND UNLOADED WHEN NOT IN USE. IF YOU KEEP A LOADED FIREARM WHERE A CHILD OBTAINS AND IMPROPERLY USES IT, YOU MAY BE FINED OR SENT TO PRISON. IT IS UNLAWFUL TO USE A MAGAZINE WITH A CAPACITY OVER 10 ROUNDS.*



#### MASSACHUSETTS STATE WARNING

*IT IS UNLAWFUL TO CARRY ANY MAGAZINE OR BELT WHICH HOLDS MORE THAN TEN ROUNDS, UNLESS AUTHORITY IS GRANTED BY THE BOSTON POLICE COMMISSIONER. IT IS UNLAWFUL TO STORE OR KEEP A FIREARM, RIFLE, SHOTGUN OR MACHINE GUN IN ANY PLACE UNLESS THAT WEAPON IS EQUIPPED WITH A TAMPER RESISTANT SAFETY DEVICE OR IS STORED OR KEPT IN A SECURELY LOCKED CONTAINER.*



#### NEW YORK STATE WARNING

*IT IS UNLAWFUL TO CARRY ANY MAGAZINE OR BELT WHICH HOLDS MORE THAN SEVEN ROUNDS, UNLESS AUTHORITY IS GRANTED BY THE STATE OF NEW YORK. THE USE OF A LOCKING DEVICE OR SAFETY LOCK IS ONLY ONE ASPECT OF RESPONSIBLE FIREARMS STORAGE FOR INCREASED SAFETY, FIREARMS SHOULD BE STORED UNLOADED AND LOCKED IN A LOCATION THAT IS BOTH SEPARATED FROM THEIR AMMUNITION AND INACCESSIBLE TO CHILDREN AND OTHER UNAUTHORIZED PERSONS.*

## 02 | SAFETY PRECAUTIONS

Safety must be the first and constant consideration of every person who handles firearms and ammunition. The person with a firearm in his possession has an important responsibility. He/she must know how to use his/her firearm safely:

1. Always keep the firearm holstered except when drawn for a definite purpose.
2. Always check the firearm for live ammunition when picked up, drawn from the holster, handed to, or received from another person.
3. Never point the firearm at anything you do not intend to shoot.
4. Never cock the hammer of the firearm unless you are ready to immediately shoot it. Do not even insert your finger in the trigger guard until you are ready to shoot.
5. Avoid dry firing even with dummy cartridges, unless the same is performed on a regular target range or at a known inanimate target.
6. When holding the firearm that is ready to fire, be absolutely certain that it is not pointed at any part of your body or at any person within your immediate vicinity.
7. Beware of obstructions in barrel. If, when firing, a weak or peculiar report is heard, cease firing and inspect the barrel for an obstruction. Remove magazine then check to insure there is no obstruction in barrel or chamber.
8. When a misfire or a "dud" is experienced keep the pistol pointed at the target for at least ten seconds before inspecting the firearm: a delayed firing may occur.
9. Remove magazine and pull slide back and engage to slide lock physically and visually confirmed chamber is empty.
10. When possible, wear shooting glasses and hearing protectors when firing.
11. Do not shoot at a hard surface or water for the bullet can glance off and travel in unpredictable directions with considerable velocity.
12. Avoid drinking alcoholic beverages when handling the firearm.

### **WARNING:**

*DO NOT ATTEMPT TO USE ANY FIREARM WITHOUT HAVING A COMPLETE UNDERSTANDING OF ITS PARTICULAR CHARACTERISTICS AND SAFE USE.*

### **WARNING:**

*YOU SHOULD NEVER DEPEND ON A SAFETY MECHANISM OR ANY OTHER MECHANICAL DEVICE TO JUSTIFY CARELESS AND IMPROPER HANDLING.*

### **WARNING:**

*THIS FIREARM WAS MANUFACTURED TO PERFORM PROPERLY WITH THE ORIGINAL PARTS AS DESIGNED. PLEASE MAKE SURE ANY PARTS YOU BUY ARE INSTALLED CORRECTLY AND THAT NEITHER REPLACEMENTS NOR ORIGINALS ARE ALTERED OR CHANGED. PUTTING A FIREARM TOGETHER INCORRECTLY OR WITH MODIFIED PARTS CAN RESULT IN DAMAGED FIREARM, DANGER, AND INJURY OR DEATH. ANY MODIFICATIONS TO FIREARM WILL VOID FACTORY WARRANTY.*

# 03 | SAFETY PRECAUTIONS

## CARRYING A LOADED 1911 PISTOL

Handling, carrying or otherwise transporting a 1911 pistol with an unfired cartridge in the chamber ALWAYS INCREASES THE RISK of an unintended firing of the cartridge, with the resulting potential for personal INJURY and DEATH. If you choose to assume that increased risk, and are not intending to fire the pistol immediately, always engage the manual thumb safety which blocks both the fully cocked hammer and the sear, a condition known as "cocked and locked." Do not, under any circumstances, carry or transport a 1911 pistol with an unfired cartridge in the chamber and the hammer set in the half-cock notch or lowered to the full forward position. Both of those hammer positions are so unsafe when carrying a 1911 pistol with a loaded chamber that they must never be used. Even the act of manually lowering the hammer into either of those positions with a loaded chamber is so unsafe that it must never be done.

## SAFETY FEATURES



**TRIGGER GUARD** - this is the metal loop around the trigger intended to deflect unwanted contact with the trigger and thereby help prevent unintended gun firing.



**GRIP SAFETY** - this safety blocks rearward movement of the trigger in order to prevent the gun firing unless the grip safety is first disengaged by the firm grasp of the shooting hand in normal shooting position, thereby allowing complete rearward trigger movement.



**DISCONNECTOR** - this device interrupts the activation of the sear by the trigger in order to prevent the sear from releasing the hammer to fire a chambered cartridge until the slide and barrel are locked together and the trigger is released and pulled again.



**THUMB SAFETY** - this is the manual safety located at the upper rear of the grip frame so the thumb of the shooting hand can be used to easily engage or disengage it, which can only happen when the hammer is fully cocked. When up and engaged, it blocks both the sear and hammer to prevent the gun firing. When engaged, this safety also blocks movement of the slide. The "cocked and locked" carry condition is achieved when the thumb safety is engaged.



**HALF-COCK NOTCH** - the half-cock notch in the hammer (often misleadingly called a safety notch) is intended to stop the hammer from reaching the firing pin in the unlikely event the full-cock notch fails to hold the hammer back. Should the hammer fall to the half-cock notch, the sear is then captured by the half-cock notch so that the sear can no longer be moved by the trigger until the malfunction is corrected. The half-cock notch IS NOT A SAFETY and must never be used as an alternative to engaging the thumb safety ("cocked and locked") when carrying the gun fully loaded.



**INERTIA FIRING PIN** - the firing pin, designed to be shorter than its housing, is held to the rear by a spring and is intended to protrude to hit a cartridge primer only when a sufficient hammer blow overcomes the spring force and the inertia of the firing pin.

# 04 | TECH SPECS

The firearm is basically the same in form, parts and function as the US Colt Government Model 1911A1 semi automatic pistol, designed by John Moses Browning, which is a standard single column magazine-fed pistol

RIA 1911 pistols are available in the full size standard (1911A1), high capacity (1911A2), mid-size (MS1911A1) and compact (CS1911A1) models. The 1911A2 utilizes a frame with a widened grip to accommodate a double column magazine with a much increased capacity. MS1911A1 and CS1911A1 pistols are basically shortened versions of the original full-size 1911A1. RIA 1911 pistols are also available in the 5" and 6" match series.

Model	Caliber	Action	Magazine Capacity	Effective Range	Overall width	Overall length	Overall height	Weight Empty	Weight Loaded	Trigger Pull	Barrel Length	Front Sight	Rear Sight	Rifling Twist	No. Of Grooves	Finish	Stock	Other Feature
FS(GI STD. / ROCK)	STD	Semi-automatic, Recoil Operated	8rd (Cal.45) 9rd( Cal. 9mm / .38S / .40S&W / 10mm)	1969 in	1.30in. / 1.42in.	8.54 in. / 8.74 in.	5.51 in.	2.47lbs.(Cal. 45) 2.56lbs.(Cal. 9mm / .38S) 2.60lbs.(Cal. 40S&W,10mm)	2.84lbs. (Cal. 45) 2.8lbs.. (Cal. 9mm) 2.93lbs.(Cal. 40S&W, 10mm) 2.82lbs. (Cal. 38S)	4 - 6 lbs.	5 in.	Fixed, Mounted on slot	Fixed, Mounted on dovetail cut	Right hand, 1 turn in 400mm	6	Parkerized / Polished nickel / Duracoat / Two-tone	Plain wood grip	
	HI-CAP		13rd (Cal. 45) 17rd (Cal. 9mm / .38S) 15rd (Cal. 40S&W / 10mm)					2.47lbs.(Cal. 45) 2.56lbs.(Cal. 9mm / .38S) 2.60lbs.(Cal. 40S&W,10mm)	2.84lbs. (Cal. 45) 2.8lbs.. (Cal. 9mm) 2.93lbs.(Cal. 40S&W, 10mm) 2.82lbs. (Cal. 38S)								High-impact polymer grip	
FSTAC	STD	Semi-automatic, Recoil Operated	8rd (Cal.45) 9rd( Cal. 9mm / .38S / .40S&W / 10mm)	1969 in	1.42 in.	8.74 in.	5.75 in.	TAC STD: 2.47lbs. (Cal. 45) 2.56lbs. (Cal. 9mm) TAC ULTRA: 2.47lbs. (Cal. 45) 2.56lbs. (Cal. 9mm)	TAC STD: 2.84lbs. (Cal. 45) 2.8lbs. (Cal. 9mm) TAC ULTRA: 3.04lbs. (Cal. 45) 2.99lbs. (Cal. 9mm)	4 - 6 lbs.	5 in.	Fixed, Mounted on dovetail cut	Fixed/adjustable mounted on dovetail cut	Right hand, 1 turn in 400mm	6	Parkerized / Polished nickel / Polished nickel / Duracoat / Two-tone	Plain/ Checkered wood grip, wrap around rubber grip, G10 grip	Full-length dust cover with picatinny rail
	HI-CAP		13rd (Cal. 45) 17rd (Cal. 9mm / .38S) 15rd (Cal. 40S&W / 10mm)					TAC ULTRA: 3.02lbs. (Cal. 45) 3.11lbs. (Cal. 9mm)	TAC ULTRA: 3.62lbs. (Cal. 45) 3.57lbs. (Cal. 9mm)									
Mid Size	.45ACP, 9mm, 38Super, 40S&W, 10mm	Semi-automatic, Recoil Operated	8rd (Cal.45) 9rd( Cal. 9mm / .38S / .40S&W / 10mm)		1.42 in.	7.80 in.	5.51 in.	2.36lbs. (Cal. 45) 2.43lbs. (Cal. 9mm)	2.73lbs. (Cal. 45) 2.66lbs. (Cal. 9mm)		4.25 in.	Fixed, mounted on slot	Fixed, mounted on dovetail cut	Right hand, 1 turn in 400mm		Parkerized / Matte nickel / Polished nickel / Duracoat / Two-tone	Plain wood grip	
Compact Size			6rd (Cal.45) 7rd( Cal. 9mm / .38S / .40S&W / 10mm)		1.30 in. / 1.42 in.	7.32 in.	5.12 in.	2.16lbs. (Cal. 45) 2.23lbs. (Cal. 9mm)	2.43lbs. (Cal. 45, 9mm)		3.66 in.	Fixed, mounted on slot	Fixed, mounted on dovetail cut			Parkerized / Matte nickel / Polished nickel / Duracoat / Two-tone	Plain wood grip	

**Notes:**

- ROCK models use a standard-length frame (no Picatinny feature).
- ROCK ULTRA models have a magazine well attached to frame.
- Weight of PRO MATCH ULTRA 6" pistol (empty): 1.30 kgs.
- Specifications subject to change without prior notice.

# 05 | BASIC PARTS

## RIA M1911 PISTOLS (GI SERIES) BASIC PARTS LIST

PART NAME	GI STANDARD FS	GI STANDARD FS HIGH CAP	GI STANDARD MS	GI STANDARD MS HIGH CAP	GI STANDARD CS
	PART NUMBER				
Barrel	4501, 0901, 3801, 4001RB, 1001RB	4501, 0901, 3801, 4001RB, 1001RB	4501MS, 0901MS, 3801MS, 4001RBMS, 1001RBMS	4501MS, 0901MS, 3801MS, 4001RBMS, 1001RBMS	4501CS, 0901CS, 3801CS, 4001RBCS, 1001RBCS
Barrel Bushing ★	4502	4502			
Barrel Link	4503	4503	4503	4503	4503
Barrel Link Pin	4504	4504	4504	4504	4504
Slide ★★	4505GI, 0905GI, 3805GI, 4005GI, 1005GI	4505GI, 0905GI, 3805GI, 4005GI, 1005GI	4505MS, 0905MS, 3805MS, 4005MS, 1005MS	4505MS, 0905MS, 3805MS, 4005MS, 1005MS	4505CS, 0905CS, 3805CS, 4005CS, 1005CS
Slide Stop ★★	4506, 0906	4506, 0906	4506, 0906	4506, 0906	4506, 0906
Slide Stop Plunger	4507	4507	4507	4507	4507
Plunger Spring	4508	4508	4508	4508	4508
Firing Pin	4509, 0909	4509, 0909	4509, 0909	4509, 0909	4509, 0909
Firing Pin Spring ★★	4510, 0910	4510, 0910	4510, 0910	4510, 0910	4510, 0910
Firing Pin Stop	4511, 0911	4511, 0911	4511, 0911	4511, 0911	4511, 0911
Extractor	4512, 0915	4512, 0915	4512, 0915	4512, 0915	4512, 0915
Front Sight ★★	4513	4513	4513	4513	4513
Rear Sight ★★	4514GI	4514GI	4514GI	4514GI	4514GI
Recoil Spring	4515, 0915, 4015, 1015	4515, 0915, 4015, 1015	4515MS, 0915MS, 1015MS	4515MS, 0915MS, 1015MS	4515MS, 0915MS, 1015MS



# 06 | BASIC PARTS

PART NAME	GI STANDARD FS	GI STANDARD FS HIGH CAP	GI STANDARD MS	GI STANDARD MS HIGH CAP	GI STANDARD CS
	PART NUMBER				
Recoil Spring Plug (Recoild Spring Reverse Plug)	4516 (4016FSB)	4516 (4016FSB)	4516 (4016FSB)	(4516MS)	(4516CS)
Recoil Spring Guide★★	4517	4517	4517MS	4517MS	4517CS
Frame★★	4518GI 4018GI	4518A2GI 4018A2GI	4518GIMS 4018GIMS	4518A2GIMS 4018A2GIMS	4518CS 4018CS
Plunger Tube	4518PT		4518PT		4518PT
Magazine Assembly	4519A, 0919A, 4019A, 1019A	4519A2A, 0919A2A, 4019A2A, 1019A2A	4519A, 0919A, 4019A, 1019A	4519A2A, 0919A2A, 4019A2A, 1019A2A	4519CSA, 0919CSA, 4019CSA, 1019CSA
Magazine Release	4524	4524A2	4524	4524A2	4524
Magazine Release Lock	4525	4525	4525	4525	4525
Magazine Release Spring	4526	4526	4526	4526	4526
Grip Panel Right★★	4527PG 4527WG	4527A2	4527WG	4527A2	4527CS
Grip Panel Left★★	4528PG 4528WG	4528A2	4528WG	4528A2	4528CS
Grip Screw	4529	4529A2	4529	4529A2	4529
Grip Screw Bushing	4529GSB		4529GSB		4529GSB
Trigger Shoe	4530GI	4530GI	4530GI	4530GI	4530GI
Trigger Stirrup	4531	4531A2	4531	4531A2	4531
Trigger Stirrup Pin	4532	4532	4532	4532	4532
Hammer (Combat Hammer)	4533	4533	4533	4533	4533★★★ (4533C)

# 07 | BASIC PARTS

PART NAME	GI STANDARD FS	GI STANDARD FS HIGH CAP	GI STANDARD MS	GI STANDARD MS HIGH CAP	GI STANDARD CS
	PART NUMBER				
Hammer Pin	4534	4534	4534	4534	4534
Hammer Strut	4535	4535	4535	4535	4535
Hammer Strut Pin	4536	4536	4536	4536	4536
Sear	4537	4537	4537	4537	4537
Sear Pin	4538	4538	4538	4538	4538
Sear Spring	4539	4539	4539	4539	4539
Disconnecter	454OB	454OB	454OB	454OB	454OB
Safety Lock / Thumb Safety	4541	4541	4541	4541	4541
Safety Lock Plunger	4542	4542	4542	4542	4542
Ejector	4543 0943	4543 0943	4543CS 0943CS	4543CS 0943CS	4543CS 0943CS
Ejector Pin	4544	4544	4544	4544	4544
Girp Safety (Beavertail Grip Safety)	4545	4545	4545	4545	4545
Mainspring	4546	4546	4546	4546	4546
Mainspring Cap	4547	4547	4547	4547	4547
Mainspring Cap Pin	4548	4548	4548	4548	4548
Mainspring Housing	4549	4549	4549	4549	4549
Mainspring Housing Pin	4550	4550	4550	4550	4550
Mainspring Housing Pin Retainer	4551	4551	4551	4551	4551

# 08 | BASIC PARTS

## RIA M1911 PISTOLS (ROCK SERIES) BASIC PARTS LIST

PART NAME	ROCK STD. FS	ROCK STD. MS	ROCK STD. FS HC	ROCK STD. MS HC	ROCK STD. CS	ROCK ULTRA FS	ROCK ULTRA MS	ROCK ULTRA CS	ROCK ULTRA FS HC
	PART NUMBER								
Barrel	4501, 0901, 3801 4001RB, 1001RB	4501MS, 0901MS, 3801MS 4001RBMS, 1001RBMS	4501, 0901, 3801 4001RB, 1001RB	4501MS, 0901MS, 3801MS 4001RBMS, 1001RBMS	4501CS, 0901CS, 3801CS, 4001RBCS, 1001RBCS	4501, 0901, 3801 4001RB, 1001RB	4501MS, 0901MS, 3801MS 4001RBMS, 1001RBMS	4501CS, 0901CS, 3801CS, 4001RBCS, 1001RBCS	4501, 0901, 3801 4001RB, 1001RB
Barrel Bushing ★	4502		4502			4502			4502
Barrel Link	4503	4503	4503	4503	4503	4503	4503	4503	4503
Barrel Link Pin	4505	4504	4504	4504	4504	4504	4504	4504	4504
Slide ★★	4505T, 0905T, 3805T, 4005T, 1005T	4505TMS, 0905TMS, 3805TMS, 4005TMS, 1005TMS	4505T, 0905T, 3805T, 4005T, 1005T	4505TMS, 0905TMS, 3805TMS, 4005TMS, 1005TMS	4505TCS, 0905TCS, 3805TCS, 4005TCS, 1005TCS	4505T, 0905T, 3805T, 4005T, 1005T	4505TMS, 0905TMS, 3805TMS, 4005TMS, 1005TMS	4505TCS, 0905TCS, 3805TCS, 4005TCS, 1005TCS	4505T, 0905T, 3805T, 4005T, 1005T
Slide Stop ★★	4506 0906	4506 0906	4506 0906	4506 0906	4506 0906	4506 0906	4506 0906	4506 0906	4506 0906
Slide Stop Plunger	4507	4507	4507	4507	4507	4507	4507	4507	4507
Plunger Spring	4508	4508	4508	4508	4508	4508	4508	4508	4508
Firing Pin	4509 0909	4509 0909	4509 0909	4509 0909	4509 0909	4509 0909	4509 0909	4509 0909	4509 0909
Firing Pin Spring ★★	4510 0910	4510 0910	4510 0910	4510 0910	4510 0910	4510 0910	4510 0910	4510 0910	4510 0910
Firing Pin Stop	4511 0911	4511 0911	4511 0911	4511 0911	4511 0911	4511 0911	4511 0911	4511 0911	4511 0911
Extractor	4512 0912	4512 0912	4512 0912	4512 0912	4512 0912	4512 0912	4512 0912	4512 0912	4512 0912
Front Sight ★★	4513A	4513A	4513A	4513A	4513A	4513B	4513B	4513B	4513B
Front Sight Fiber Optic						4513C	4513C	4513C	4513C
Rear Sight ★★	4514SF	4514SF	4514SF	4514SF	4514SF	4514SF	4514ASF	4514ASF	4514ASF
Recoil Spring	4515, 0915, 4015, 1015	4515MS, 0915MS 1015MS	4515, 0915, 4015, 1015	4515MS, 0915MS, 1015MS	4515CS 09145CS	4515, 0915, 4015, 1015	4515MS, 0915MS, 1015MS	4515CS 09145CS	4515, 0915, 4015, 1015



# 10 | BASIC PARTS

PART NAME	ROCK STD. FS	ROCK STD. MS	ROCK STD. FS HC	ROCK STD. MS HC	ROCK STD. CS	ROCK ULTRA FS	ROCK ULTRA MS	ROCK ULTRA CS	ROCK ULTRA FS HC
	PART NUMBER								
Sear	4537	4537	4537	4537	4537	4537	4537	4537	4537
Sear Pin (Ambi. Sear Pin)	(4538AS)	(4538AS)	(4538AS)	(4538AS)	4538	(4538AS)	(4538AS)	(4538AS)	(4538AS)
Sear Spring	4539	4539	4539	4539	4539	4539	4539	4539	4539
Disconnecter	454OB	454OB	454OB	454OB	454OB	454OB	454OB	454OB	454OB
Safety Lock / Thumb Safety					4541				
Ambi. Safety (Left)	4541ASL	4541ASL	4541ASL	4541ASL		4541ASL	4541ASL	4541ASL	4541ASL
Ambi. Safety (Right)	4541ASR	4541ASR	4541ASR	4541ASR		4541ASR	4541ASR	4541ASR	4541ASR
Safety Lock Plunger	4542	4542	4542	4542	4542	4542	4542	4542	4542
Ejector	4543 0943	4543CS 0943CS	4543 0943	4543CS 0943CS	4543CS 0943CS	4543 0943	4543CS 0943CS	4543CS 0943CS	4543 0943
Ejector Pin	4544	4544	4544	4544	4544	4544	4544	4544	4544
Grip Safety (Beavertail Grip Safety)	(4545HS)	(4545HS)	(4545HS)	(4545HS)	(4545HS)	(4545HS)	(4545HS)	(4545HS)	(4545HS)
Mainspring	4546	4546	4546	4546	4546CS	4546	4546	4546CS	4546
Mainspring Cap	4547	4547	4547	4547	4547CS	4547	4547	4547CS	4547
Mainspring Cap Pin	4548	4548	4548	4548	4548	4548	4548	4548	4548
Mainspring Housing	4549P	4549	4549	4549	4549CS	4549P	4549P	4549CSC	4549P
Mainspring Housing Pin	4550	4550	4550	4550	4550	4550	4550	4550	4550L
Mainspring Housing Pin Retainer	4551	4551	4551	4551	4551	4551	4551	4551	4551
Rear Sight Retainer Screw	4556SF	4556SF	4556SF	4556SF	4556SF	*4556SF	*4556SF	*4556SF	*4556SF
Magazine Well						4549MW	4549MW	4549MW	4549A2MW

# 11 | BASIC PARTS

## RIA M1911 PISTOLS (TAC SERIES) BASIC PARTS LIST

PART NAME	TAC STD (STD/NIGHT SIGHT) FS	TAC STD CS	TAC STD. FS HC	TAC ULTRA FS	TAC ULTRA FS HC	TAC ULTRA MS	TAC ULTRA CS
	PART NUMBER						
Barrel	4501, 0901, 3801 4001RB, 1001RB	4501CS, 0901CS, 3801CS 4001RBCS, 1001RBCS	4501, 0901, 3801 4001RB, 1001RB	4501, 0901, 3801 4001RB, 1001RB	4501, 0901, 3801 4001RB, 1001RB	4501, 0901, 3801 4001RBMS, 1001RBMS	4501CS, 0901CS, 3801CS 4001RBCS, 1001RBCS
Barrel Bushing ★	4502		4502	4502	4502		
Barrel Link	4503	4503	4503	4503	4503	4503	4503
Barrel Link Pin	4504	4504	4504	4504	4504	4504	4504
Slide ★★	45052011NS, 09052011NS, 38052011NS, 40052011NS, 10052011NS	45052011NSCS,09052011NSCS, 38052011NSCS, 40052011NSCS, 10052011NSCS	45052011NS, 09052011NS, 38052011NS, 40052011NS, 10052011NS	45052011, 09052011, 38052011, 40052011, 10052011	45052011, 09052011, 38052011, 40052011, 10052011	45052011MS, 09052011MS, 38052011MS, 40052011MS, 10052011MS	45052011CS, 09052011CS, 38052011CS, 40052011CS, 10052011CS
Slide Stop ★★	4506 0906	4506 0906	4506 0906	4506 0906	4506 0906	4506 0906	4506 0906
Slide Stop Plunger	4507	4507	4507	4507	4507	4507	4507
Plunger Spring	4508	4508	4508	4508	4508	4508	4508
Firing Pin	4509 0909	4509 0909	4509 0909	4509 0909	4509 0909	4509 0909	4509 0909
Firing Pin Spring★★	4510 0910	4510 0910	4510 0910	4510 0910	4510 0910	4510 0910	4510 0910
Firing Pin Stop	4511 0911	4511 0911	4511 0911	4511 0911	4511 0911	4511 0911	4511 0911
Extractor	4512 0912	4512 0912	4512 0912	4512 0912	4512 0912	4512 0912	4512 0912
Front Sight★★	4513A 4513D	4513A	4513A	4513B	4513B	4513B	4513B
Front Sight Fiber Optic				4513C	4513C	4513C	4513C
Rear Sight ★★	4514SF 4514SFD	4514SF	4514SF	4514ASF	4514SAF	4514ASF	4514ASF
Recoil Spring	4515, 0915, 4015, 1015	4515CS 0915CS	4515, 0915, 4015, 1015	4515, 0915, 4015, 1015	4515, 0915, 4015, 1015	4515MS, 0915MS, 1015MS	4515CS 0915CS



# 13 | BASIC PARTS

PART NAME	TAC STD (STD/NIGHT SIGHT) FS	TAC STD CS	TAC STD. FS HC	TAC ULTRA FS	TAC ULTRA FS HC	TAC ULTRA MS	TAC ULTRA CS
	PART NUMBER						
Sear	4537	4537	4537	4537	4537	4537	4537
Sear Pin (Ambi. Sear Pin)	(4538AS)	(4538AS)	(4538AS)	(4538AS)	(4538AS)	(4538AS)	(4538AS)
Sear Spring	4539	4539	4539	4539	4539	4539	4539
Disconnecter	4540B	4540B	4540B	4540B	4540B	4540B	4540B
Ambi. Safety (Left)	4541ASL	4541ASL	4541ASL	4541ASL	4541ASL	4541ASL	4541ASL
Ambi. Safety (Right)	4541ASR	4541ASR	4541ASR	4541ASR	4541ASR	4541ASR	4541ASR
Safety Lock Plunger	4542	4542	4542	4542	4542	4542	4542
Ejector	4543 0943	4543 0943	4543 0943	4543 0943	4543 0943	4543CS 0943CS	4543CS 0943CS
Ejector Pin	4544	4544	4544	4544	4544	4544	4544
Grip safety (Beavertail Grip Safety)	(4545HS)	(4545HS)	(4545HS)	(4545HS)	(4545HS)	(4545HS)	(4545HS)
Mainspring	4546	4546CS	4546	4546	4546	4546	4546CS
Mainspring Cap	4547	4547CS	4547	4547	4547	4547	4547CS
Mainspring Cap Pin	4548	4548	4548	4548	4548	4548	4548
Mainspring Housing	4549P	4548CSC	4548P	4548P	4548P	4548P	4548CSC
Mainspring Housing Pin	4550	4550	4550	4550	4550	4550	4550
Mainspring Housing Pin Retainer	4551	4551	4551	4551	4551	4551	4551
Rear Sight Retainer Screw	*4556SF	*4556SF	*4556SF	*4556SF	*4556SF	*4556SF	*4556SF
Magazine Well				4549MW	4549A2MW	4549MW	4549MW



# 14 | BASIC PARTS

## RIA M1911 PISTOLS (MATCH SERIES) BASIC PARTS LIST

PART NAME	PRO MATCH ULTRA	PRO MATCH ULTRA 6"	PRO MATCHTAC ULTRA 6"	PRO MATCHTAC ULTRA HC	PRO MATACTAC ULTRA 6" HC
	PART NUMBER				
Barrel	4501MA, 4001MA, 1001MA	450BMA6, 4001BMA6, 1001BMA6	4501RBMA6, 4001RBMA6, 1001RBMA6	4501RBMA, 4001RBMA, 1001RBMA	4501RBMA6, 4001RBMA6, 1001RBMA6
Barrel Bushing ★	4502				
Barrel Link	4503	4503	4503	4503	4503
Barrel Link Pin	4504	4504	4504	4504	4504
Slide ★★	4505MA, 4005MA, 1005MA	4505MA6, 4005MA6, 1005MA6	4505MA62011, 4005MA62011, 1005MA62011	4505MA2011SW, 4005MA2011SW, 1005MA2011SW	4505MA62011SW, 4005MA62011SW, 1005MA62011SW
Slide Stop ★★	4506, 0906	4506, 0906	4506, 0906	4506, 0906	4506, 0906
Slide Stop Plunger	4507	4507	4507	4507	4507
Plunger Spring	4508	4508	4508	4508	4508
Firing Pin	4509, 0909	4509, 0909	4509, 0909	4509, 0909	4509, 0909
Firing Pin Spring ★★	4510, 0910	4510, 0910	4510, 0910	4510, 0910	4510, 0910
Firing Pin Stop	4511A, 0911A	4511A, 0911A	4511A, 0911A	4511A, 0911A	4511A, 0911A
Extractor	4512, 0912	4512, 0912	4512, 0912	4512, 0912	4512, 0912
Front Sight ★★	4513B	4513B	4513B	4513B	4513B
Rear Sight ★★	4514T	4514T	4514T	4514T	4514T
Recoil Spring	4515, 4015, 1015	4515, 4015, 1015	4515, 4015, 1015	4515, 4015, 1015	4515, 4015, 1015

# 15 | BASIC PARTS

PART NAME	PRO MATCH ULTRA	PRO MATCH ULTRA 6"	PRO MATCHTAC ULTRA 6"	PRO MATCHTAC ULTRA HC	PRO MATAHTAC ULTRA 6" HC
	PART NUMBER				
Recoil Spring Plug (Recoil Spring Reverse Plug)	45RR01	(4016FSBA6)	(4016FSBA6)	(4016FSBA)	(4016FSBA6)
Recoil Spring Guide★★	4517A	4517C	4517C	4517B	4517B
Frame★★	4518MA 4018MA	4518MA6 4018MA6	4018MA62011	4018A2MA2011SMW	4018A2MA62011MW
Plunger Tube	4518PT	4518PT	4518PT		
Magazine Assembly	4519A, 4019A, 1019A	4519A, 4019A, 1019A	4519A, 4019A, 1019A	4519A2A, 4019A2A, 1019A2A	4519A2A, 4019A2A, 1019A2A
Magazine Release	4524	4524	4524	4524A2	4524A2
Magazine Release Lock	4525	4525	4525	4525	4525
Magazine Release Spring	4526	4526	4526	4526	4526
Grip Panel Right★★	4527R	4527R	4527R	4527A2G10MW	4527A2G10MW
Grip Panel Left★★	4528R	4528R	4528R	4528A2G10MW	4528A2G10MW
Grip Screw	4529SH	4529SH	4529SH	4529A2SH	4529A2SH
Grip Screw Bushing	4529GSB	4529GSB	4529GSB		
Trigger Shoe★★	4530MR3	4530MR3	4530MR3	4530MR3	4530MR3
Trigger Adjusting Screw	4530SC	4530SC	4530SC	4530SC	4530SC
Trigger Stirrup	4531	4531	4531	4531A2	4531A2
Trigger Stirrup Pin	4532	4532	4532	4532	4532
Hammer (Combat Hammer)	(4533C)	(4533C)	(4533C)	(4533C)	(4533C)
Hammer Pin	4534	4534	4534	4534	4534
Hammer Strut	4535	4535	4535	4535	4535
Hammer Strut Pin	4536	4536	4536	4536	4536

# 16 | BASIC PARTS

PART NAME	PRO MATCH ULTRA	PRO MATCH ULTRA 6"	PRO MATCH TAC ULTRA 6"	PRO MATCH TAC ULTRA HC	PRO MATCH TAC ULTRA 6" HC
	PART NUMBER				
Sear	4537	4537	4537	4537	4537
Sear Pin (Ambi. Sear Pin)	(4538AS)	(4538AS)	(4538AS)	(4538AS)	(4538AS)
Sear Spring	4539	4539	4539	4539	4539
Disconnecter	4540B	4540B	4540B	4540B	4540B
Ambi. Safety (Left)	4541ASL	4541ASL	4541ASL	4541ASL	4541ASL
Ambi. Safety (Right)	4541ASR	4541ASR	4541ASR	4541ASR	4541ASR
Safety Lock Plunger	4542	4542	4542	4542	4542
Ejector	4543 0943	4543 0943	4543 0943	4543 0943	4543 0943
Ejector Pin	4544	4544	4544	4544	4544
Grip safety (Beavertail Grip Safety)	(4545HS)	(4545HS)	(4545HS)	(4545HS)	(4545HS)
Mainspring	4546	4546	4546	4546	4546
Mainspring Cap	4547	4547	4547	4547	4547
Mainspring Cap Pin	4548	4548	4548	4548	4548
Mainspring Housing	4530SC	4530SC	4530SC	4530SC	4530SC
Mainspring Housing Pin	4549P	4549P	4549P	4549P	4549P
Mainspring Housing Pin Retainer	4550	4550	4550	4550	4550
Rear Sight Retainer Screw	4551	4551	4551	4551	4551
Magazine Well			4549MW	4549A2MW	4549A2MW

Notes:  
Refer to the exploded drawing of the required model or variant for visual check of parts.  
When ordering parts, it is necessary to specify the model and the caliber aside from the part number. It may also be necessary to specify the customer, the trademark or brand, and/or other information that could indicate the exact part being required.  
(★) Bull-barreled pistols do not use a barrel bushing.  
(\*) Parts with rear sight.  
(★★) Parts with other variants.

# 17 | PARTS VARIANCE

## ROCK ISLAND ARMORY (RIA) 1911 PISTOLS DESCRIPTION OF PART VARIANCE

PART NUMBER	PART NAME/DESCRIPTION
4501 / 0901 / 3801	Standard barrel: cal. 45, cal. 9mm, cal. 38S
4501R / 0901R / 3801R	Clark cut type ramped barrel, cal. 45, cal. 9mm, cal. 38s
4501B / 4501MS / 0901MS / 4501CS / 0901CS	Bull barrel: cal.45 FS/MS/CS, cal. 9mm CS
4001RB / 4001MSRB / 1001RB / 1001MSRB	Clark cut type ramped bull barrel: cal. 40S&W FS/MS, cal. 10mm FS/MS
4501MA / 0901MA / 4501MA6 / 0901MA6	Standard type match barrel(5" & 6"): cal. 45, cal. 9mm
4501BMA / 4501BMA6	Match bull barrel (5" & 6"), cal. 45
4001RBMA / 4001RBMA6	Clark cut type match ramped bull barrel (5" & 6"), cal. 40S&W
4505 / 0905 / 3805 / 4005 / 4505MS / 0905MS / 4505CS / 0905CS	Slide with dovetail-mounted front sight, snag-free rear sight mounting and double wide serration (single wide serration for MS and CS models) for standard length hi-cap or standard frame
4505A / 0905A / 3805A / 4005A / 4505AMS / 0905AMS / 4505ACS / 0905ACS	Slide with dovetail-mounted front sight, LPA TRT type rear sight mounting and double wide serration (single wide serration for MS and CS models) for standard length hi-cap or standard frame
45052011 / 45052011MS / 45052011CS / 09052011 / 09052011MS / 09052011CS / 38052011 / 38052011MS / 40052011 / 4005A22011MS / 1005A2011 / 1005A2011MS	Slide for full-length hi-cap or standard frame with picatinny rail, dovetail-mounted front sight, snag-free rear sight mounting and double wide serration
4505A2011 / 4505A22011MS / 4505A2011CS / 0905A2011 / 0905A2011MS / 0905A2011CS / 3805A2011 / 3805A2011MS / 4005A2011 / 4005A2011MS / 1005A2011 / 1005A2011MS	Slide for full-length hi-cap or standard frame with picatinny rail, dovetail-mounted front sight, LPA TRT type rear sight mounting and double wide serration
4505GI / 0905GI / 3805GI / 4005GI / 4505GIMS / 0905GIMS / 4505GICS / 0905GICS	Slide with GI serration and GI type front sight & rear sight for standard length hi-cap or standard frame
4505T / 0905T / 4005T / 1005T / 4505TMS / 0905TMS / 1005TMS / 4505TCS / 0905TCS	Slide with GI serration, dovetail-mounted front sight and snag-free rear sight mounting for standard length hi-cap or standard frame
45052011NS / 09052011NS / 45052011NSCS / 09052011NSCS	Slide with GI serration, dovetail-mounted front sight and snag-free rear sight mounting for full length hi-cap or standard frame with picatinny rail
4505MA / 4005MA / 4505MA6 / 4005MA6	Match slide with GI serration, dovetail-mounted front sight and LPA TRT type rear sight mounting for standard length hi-cap or standard frame (5" & 6")
4505MA2011 / 4005MA2011 / 4505MA62011 / 4005MA62011	Match slide with GI serration, dovetail-mounted front sight and LPA TRT type rear sight mounting for full length hi-cap or standard frame (5" & 6") with picatinny rail
4505MA2011SW / 4005MA2011SW	Match slide with slant wide serration, dovetail-mounted front sight LPA TRT type rear sight mounting for full length hi-cap or standard frame with picatinny rail (The SW suffix supersedes the GI serration).
4505MA62011SW / 4005MA62011SW	Match slide with slant wide serration, dovetail-mounted front sight LPA TRT type rear sight mounting for full length hi-cap or standard frame fro six-inch(6") barrel (The SW suffix supersede the GI serration)

NOTE: ADD THE SUFFIX "C" ON ALL SLIDES WITH CHECKERED BACK RADIUS.

# 18 | PARTS VARIANCE

PART NUMBER	PART NAME/DESCRIPTION
4501	Standard firing pin spring for cal. 45 pistols
0910	Standard firing pin spring for cal. 9mm pistols
4510XP	3XP firing pin spring cal. 45
0910XP	3XP firing pin spring cal. 9mm
4511	Firing pin stop for cal. 45 slide using a standard or snag-free rear sight
0911	Firing pin stop for cal. 9mm slide using a standard or snag-free rear sight
4511A	Firing pin stop for cal. 45 slide using LPA TRT type rear sight mounting
0911A	Firing pin stop for cal. 9mm slide using LPA TRT type rear sight mounting
4513	GI front sight
4513A	Standard dovetail-mounted front sight
4513AD	Standard dovetail-mounted front sight, dotted luminous
4513B	Dovetail-mounted front sight with fiber optic
4514GI	GI rear sight
4514SF	Snag-free rear sight
4514SFD	Dotted luminous rear sight (Meprolight/ Night sight)
4514ASF	Adjustable snag-free style rear sight (LPA brand, MPS1-30 type)
4514T	LPA brand, TRT type rear-sight (similar to BO-MAR)
4515	Recoil spring, cal. 45
0915	Recoil spring, cal. 9mm
4515MS	Recoil spring, cal. 45 MS pistol
0915MS	Recoil spring, cal. 9mm MS pistol
4515CS	Recoil spring, cal. 45 CS pistol
0915CS	Recoil spring, cal. 9mm CS pistol
4516	Recoil spring plug for use with barrel bushing and standard recoil spring guide
45RR01	Spring cap for use with barrel bushing and full length recoil spring guide, in place of recoil spring
4016FSB	Recoil spring reverse plug for standard length recoil spring guide
4016FSBA / 4016FSBA6 / 4516MS / 4516CS	Recoil spring reverse plug for full length recoil spring guide
4517	Recoil spring guide (standard)
4517A	Full length recoil spring guide, 5 inches, to be used with recoil spring plug with hole feature or
4517B	Full length recoil spring guide, 5 inches, to be used with recoil spring reverse plug with hole feature
4517C	Full length recoil spring guide, 6 inches (Two-piece assembly)

# 19 | PARTS VARIANCE

PART NUMBER	PART NAME/DESCRIPTION
4517Ca	Flange end of 4517C and 4517D (Full-length recoil spring guide)
4517Cb	Rod extension for 4517C(6-inches full length recoil spring guide)
4517D	Full length recoil spring guide, 7 inches (Two-piece assembly)
4517Db	Rod extension for 4517D (7-inches full length recoil spring guide)
4517MS / 4517CS	Full length recoil spring guide, MS & CS models, respectively
4518 / 4018 / 4518MS / 4018MS / 4518CS	Standard length standard frame without front strap serration, adaptable for high sweep beavertail grip safety
4518GI / 4018GI / 4518GIMS / 4518GICS	Standard length hi-cap frame for GI series pistols (No front strap serration)
4518A2GI / 4018A2GI / 4518A2GIMS	Standard length standard frame with front strap serration and using high sweep beavertail grip safety
4518A22011 / 4018A22011 / 4518A22011	Full length hi-cap frame with Picatinny type rail
45182011 / 40182011 / 45182011MS / 40182011MS / 45182011CS	Full length standard frame with Picatinny type rail
4518A22011MW / 4018A22011MW / 4518A22011MSMW / 4018A22011MSMW	Full length hi-cap frame with Picatinny rail, modified for magazine well attachment
4518MA / 4018MA	Standard length standard match frame
4518A2MA / 4018A2MA	Standard length hi-cap match frame
4518MA2011 / 4018MA2011 / 4518MA62011 / 4018MA62011	Full length standard match frame with Picatinny type rail (5" & 6")
4518MA2011S / 4018MA2011S / 4518MA62011S / 4018MA62011S	Full length standard match frame with Picatinny type dust cover without rail (5" & 6")
4518MA2011SMW / 4018MA2011SMW / 4518MA62011SMW / 4018MA62011SMW	Full length standard match frame with Picatinny type dust cover without rail (5" & 6") & magazine well clearance
4518A2MA2011 / 4018A2MA2011 / 4518A2MA62011 / 4018A2MA62011	Full length high cap match frame with Picatinny type rail (5" & 6")
4518A2MA2011MW / 4018A2Ma2011MW / 4518A2MA62011MW / 4018A2MA62011MW	Full length high cap match frame with Picatinny type rail (5" & 6") & magazine well clearance
4518A2MA2011S / 4018A2Ma2011S / 4518A2Ma62011S / 4018A2Ma62011S	Full length high cap match frame with picatinny type dust cover without rail (5" & 6")
4518A2MA2011SMW / 4018A2MA2011SMW / 4518A2MA62011SMW / 4018A2MA62011SMW	Full length high cap match frame with picatinny type dust cover without rail (5" & 6") & magazine well clearance
4519A / 4019A / 0919A / 3819A / 1019A / 4519CSA / 0919CSA	Magazine box assembly for standard pistols
4519A2A / 4019A2A / 0919A2A / 3819A2A / 1019A2A	Magazine box assembly for hi-cap pistols
4524	Magazine release, standard
4524A2	Magazine release, hi-cap
4527	Standard grip panel right (Generic)
4527PG	Standard grip panel right, polymer

# 20 | PARTS VARIANCE

PART NUMBER	PART NAME/DESCRIPTION
4527WG	Standard grip panel right, wood grip
4527R	Standard grip panel right, rubberized
4527WGC1	Standard grip panel right, full-checked wood grip
4527WGC2	Standard grip panel right, double-diamond checked wood grip
4527G10	Standard grip panel right, G10 material
4527G10MW	Standard grip panel right, G10 material with clearance for magazine well
4527CS	CS grip panel right (Generic)
4527CSR	CS grip panel right, rubberized
4527CSG10	CS grip panel right, G10 material
4527CSG10MW	CS grip panel right, G10 material with clearance for magazine well
4527CSC1	CS grip panel right, full-checked wood grip
4527CSC2	CS grip panel right, double-diamond checked wood grip
4527CSPG	CS grip panel right, polymer
4527A2	Hi-cap grip panel right, polymer
4527A2G10	Hi-cap grip panel right, G10 material
4527A2G10MW	Hi-cap grip panel right, G10 material, modified for magazine well feature
4528	Standard grip panel left (Generic)
4528PG	Standard grip panel left, polymer
4528WG	Standard grip panel left, wood grip
4528R	Standard grip panel left, rubberized
4528WGC1	Standard grip panel left, full-checked wood grip
4528WGC2	Standard grip panel left, double-diamond checked wood grip
4528G10	Standard grip panel left, G10 material
4528G10MW	Standard grip panel left, G10 material with clearance for magazine well
4528CS	CS grip panel left (Generic)
4528CSR	CS grip panel left, rubberized
4528CSRG10	CS grip panel left, G10 material
4528CSRG10MW	CS grip panel left, G10 material with clearance for magazine well
4528CSC1	CS grip panel left, full-checked wood grip
4528CSC2	CS grip panel left, double-diamond checked wood grip
4528CSPG	CS grip panel left, polymer

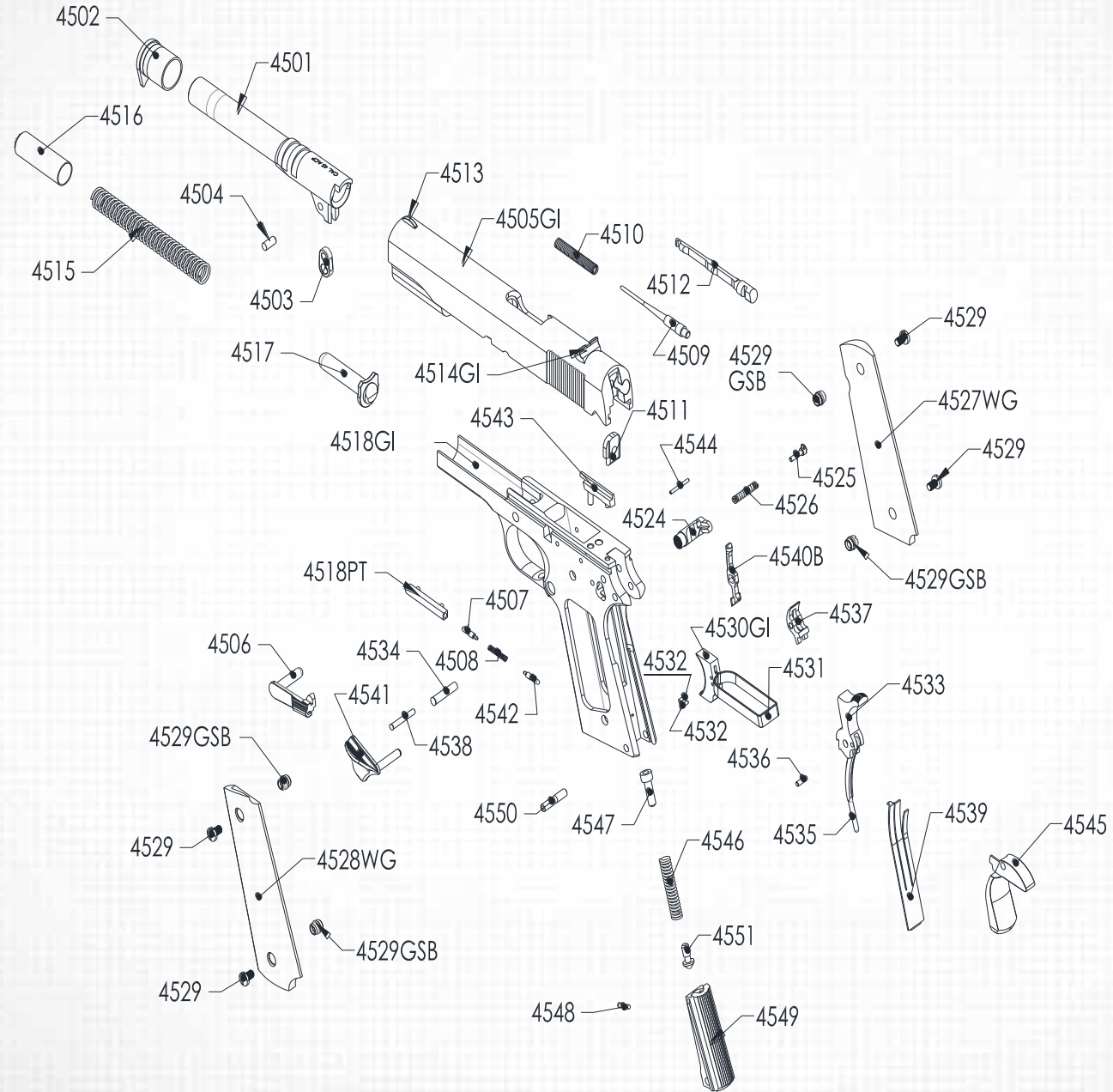
# 21 | PARTS VARIANCE

PART NUMBER	PART NAME/DESCRIPTION
4528A2	Hi-cap grip panel left, polymer
4528A2G10	Hi-cap grip panel left, G10 material
4528A2G10MW	Hi-cap grip panel left, G10 material, modified for magazine well feature
4528A2P	Hi-cap wrap around rubber grip
4528P	Standard wrap around rubber grip
4529	Standard grip screw, slotted
4529SH	Standard grip screw, hex socket head
4529A2	Hi-cap grip screw, slotted
4529A2SH	Hi-cap grip screw, hex socket head
4530GI	GI trigger shoe
4530MR3	MR3 type steel trigger shoe
4531	Trigger stirrup, standard
4531A2	Trigger stirrup, hi-cap
4533	Standard / GI hammer
4538	Sear pin
4538AS	Ambi. Sear pin
4540B	Bull disconnecter
4543 / 0943	Ejector for cal. 45/9mm FS pistols
4543CS / 0943CS	Ejector for cal. 45/9mm MS & CS pistols
4546	Mainspring for CS pistol
4546CS	Mainspring for CS pistol
4549	Mainspring housing, serrated steel type
4549P	Mainspring housing, checkered polymer type
4549CS	CS mainspring housing, serration steel type
4549CSC	CS mainspring housing, checkered steel type
4549CSP	CS mainspring housing, checkered polymer type
4549MW	Magazine well for standard frame pistol
4549A2MW	Magazine well for hi-cap pistol
4550	Standard mainspring housing pin
4550L	Mainspring housing pin for hi-cap frame with magazine well



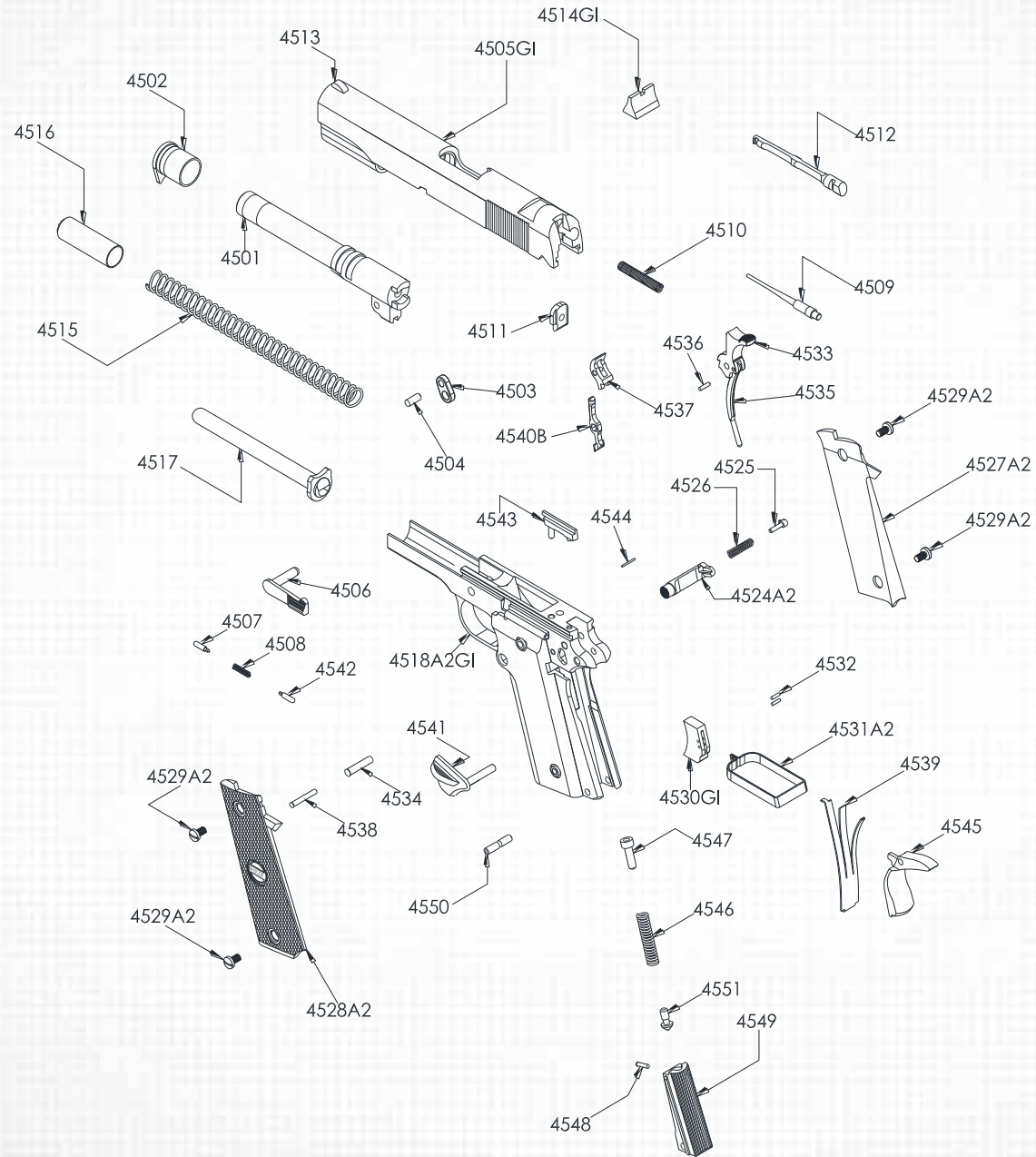
# 22 | EXPLODED VIEWS

## 45 GI STANDARD FS



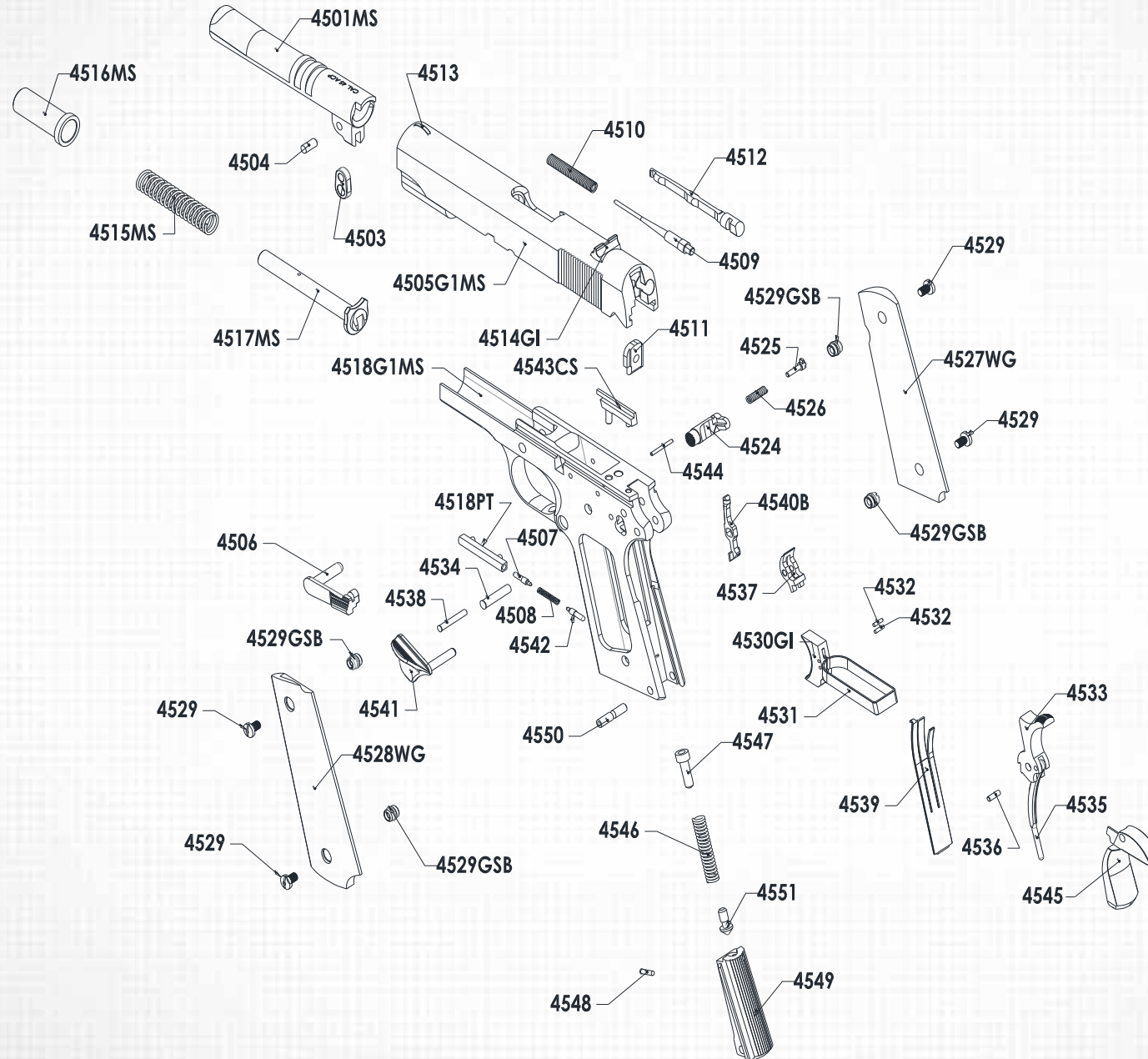
# 23 | EXPLODED VIEWS

## 45 GI STANDARD FS HIGH CAP



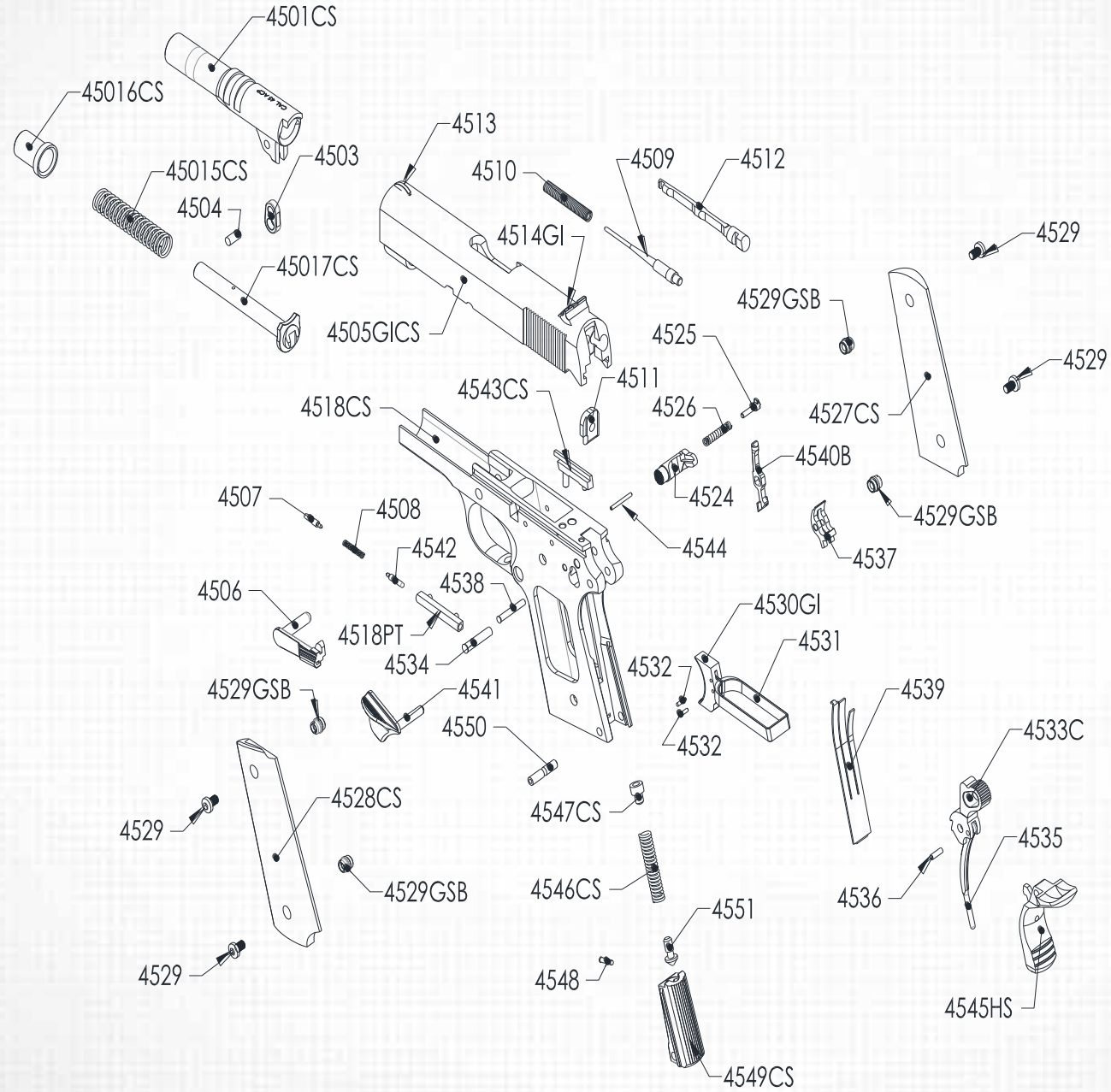
# 24 | EXPLODED VIEWS

## 45 GI STANDARD MS



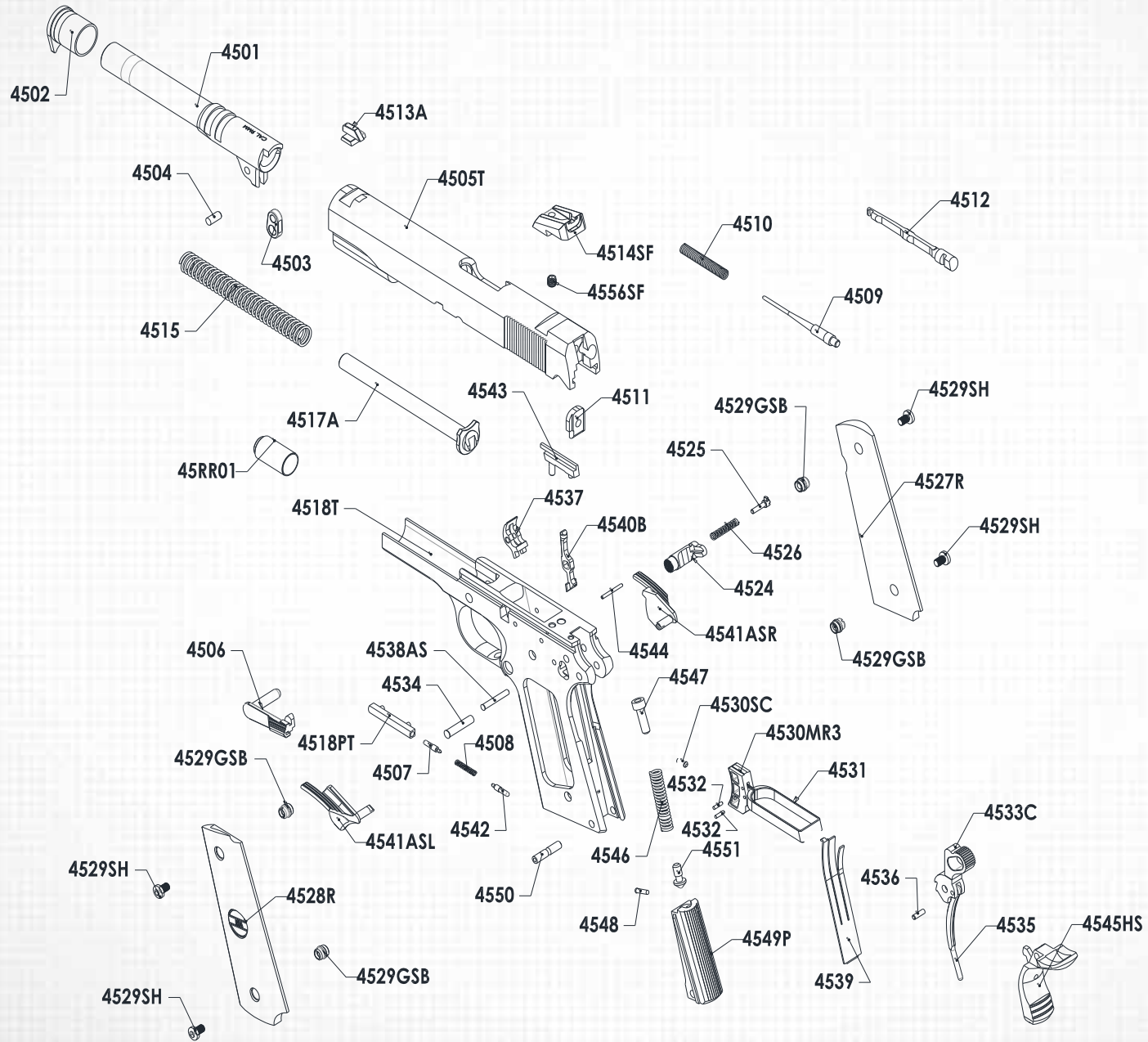
# 25 | EXPLODED VIEWS

## 45 GI STANDARD CS



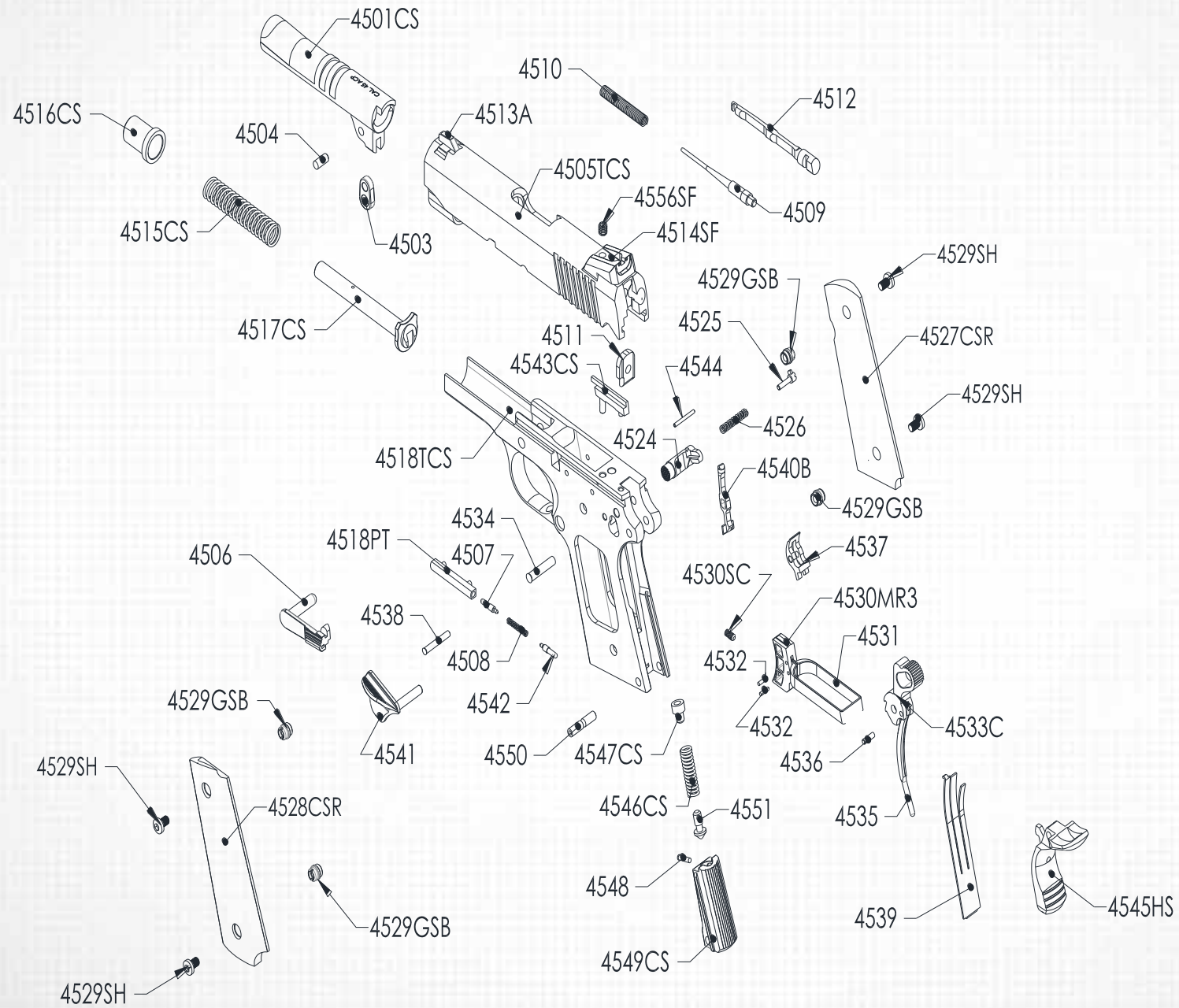
# 26 | EXPLODED VIEWS

## 45 ROCK STANDARD FS



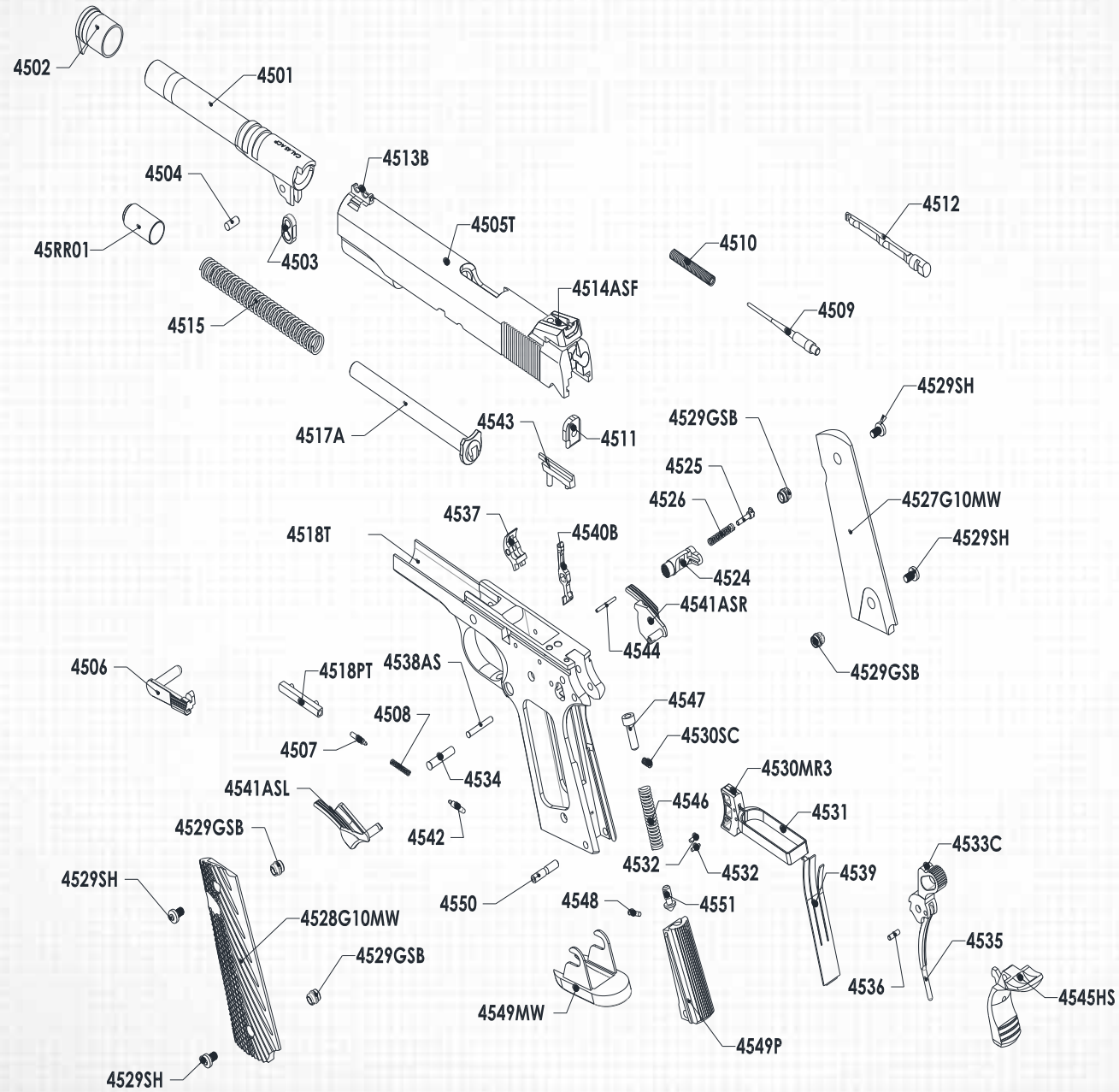
# 27 | EXPLODED VIEWS

## 45 ROCK STANDARD CS



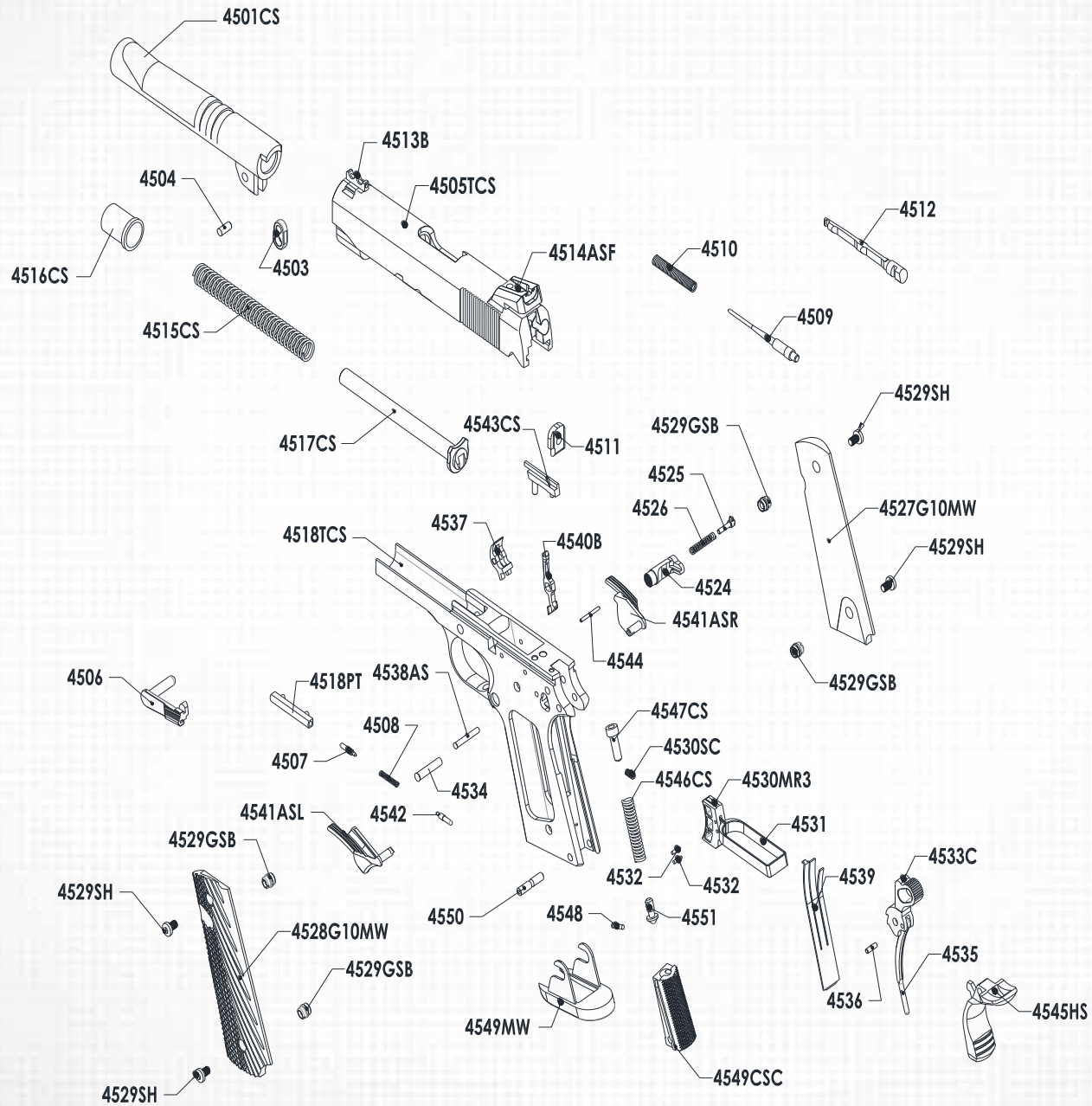
# 28 | EXPLODED VIEWS

## 45 ROCK ULTRA FS



# 29 | EXPLODED VIEWS

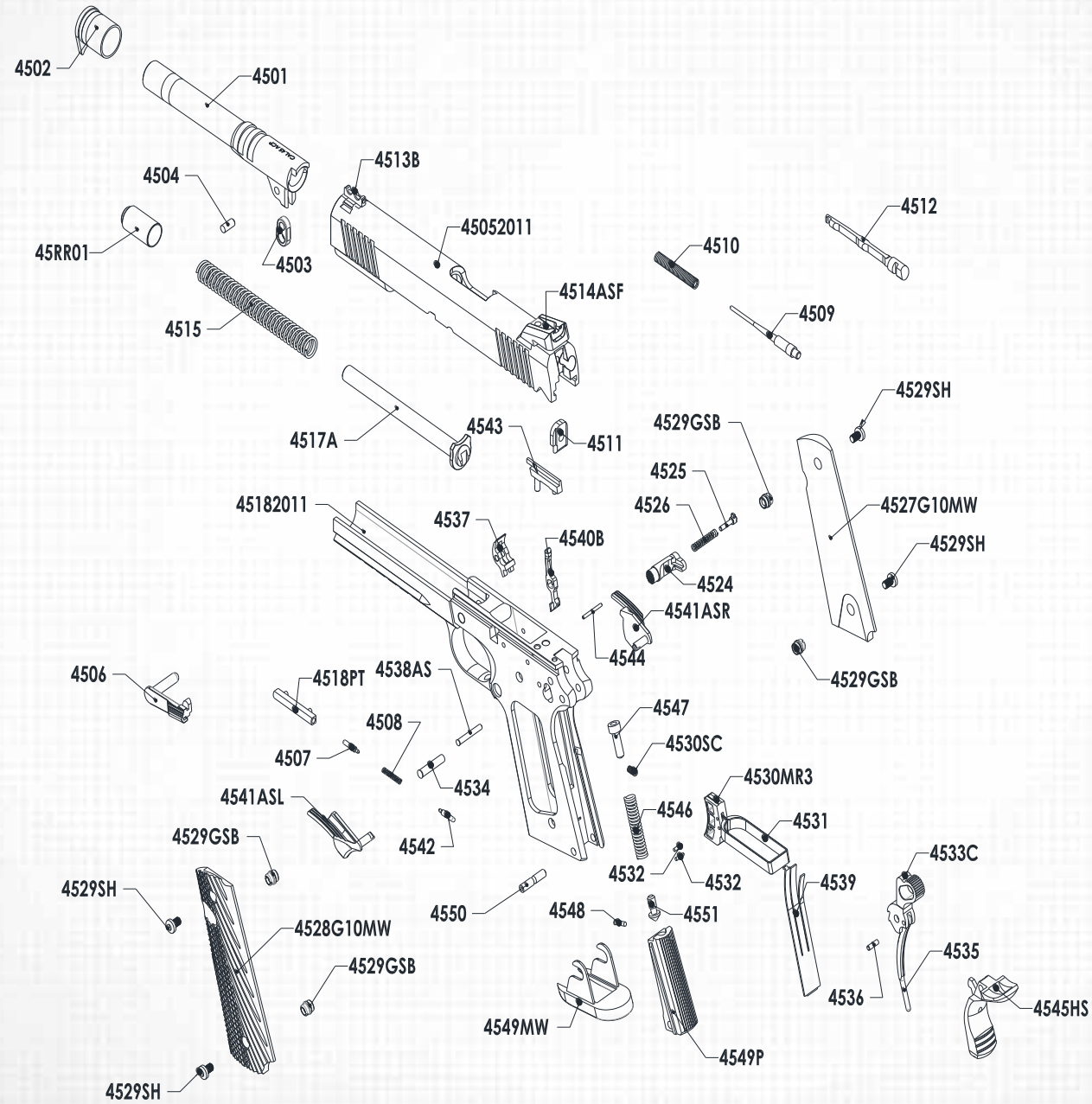
## 45 ROCK ULTRA CS





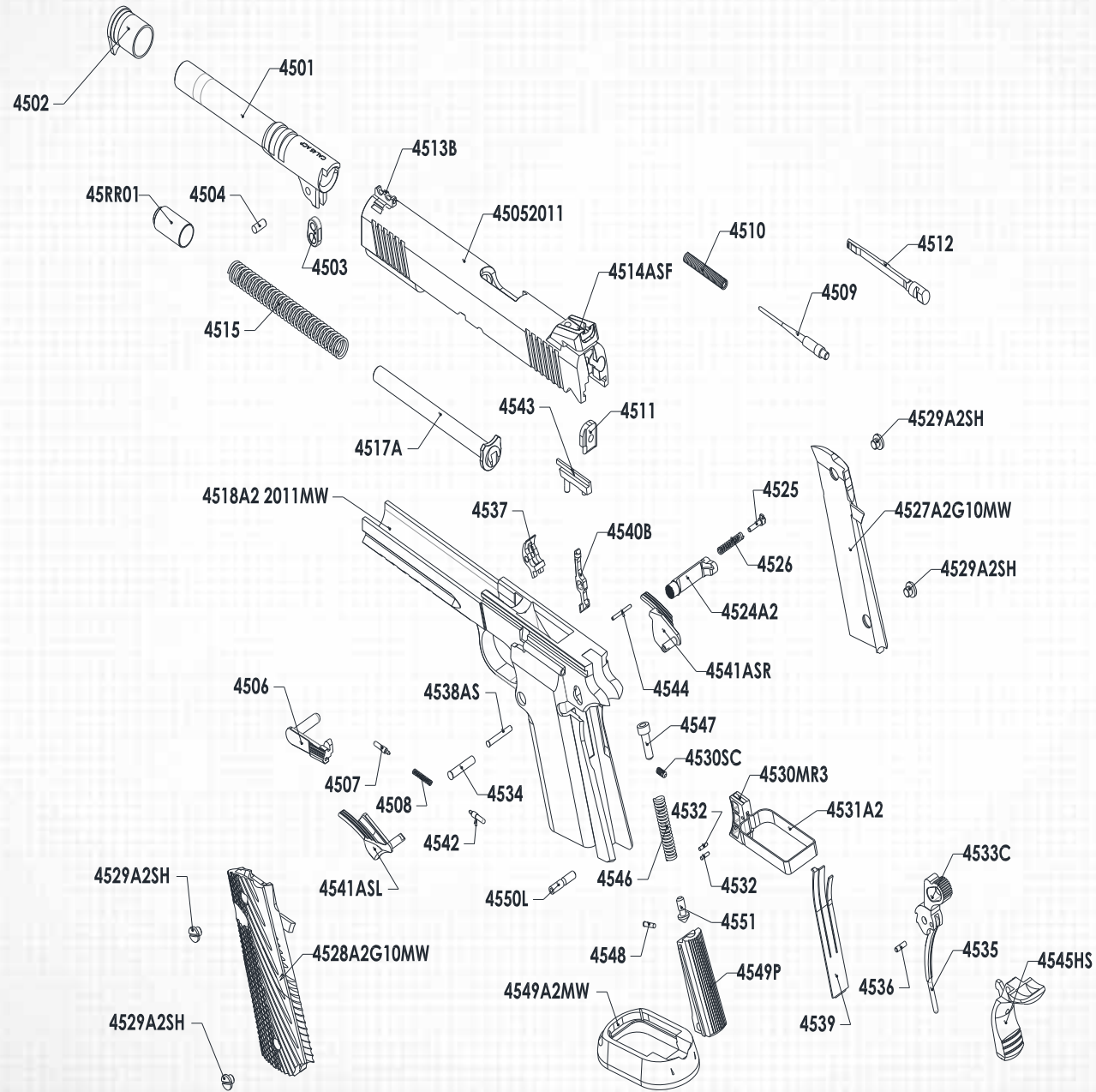
# 30 | EXPLODED VIEWS

## 45 TAC ULTRA FS



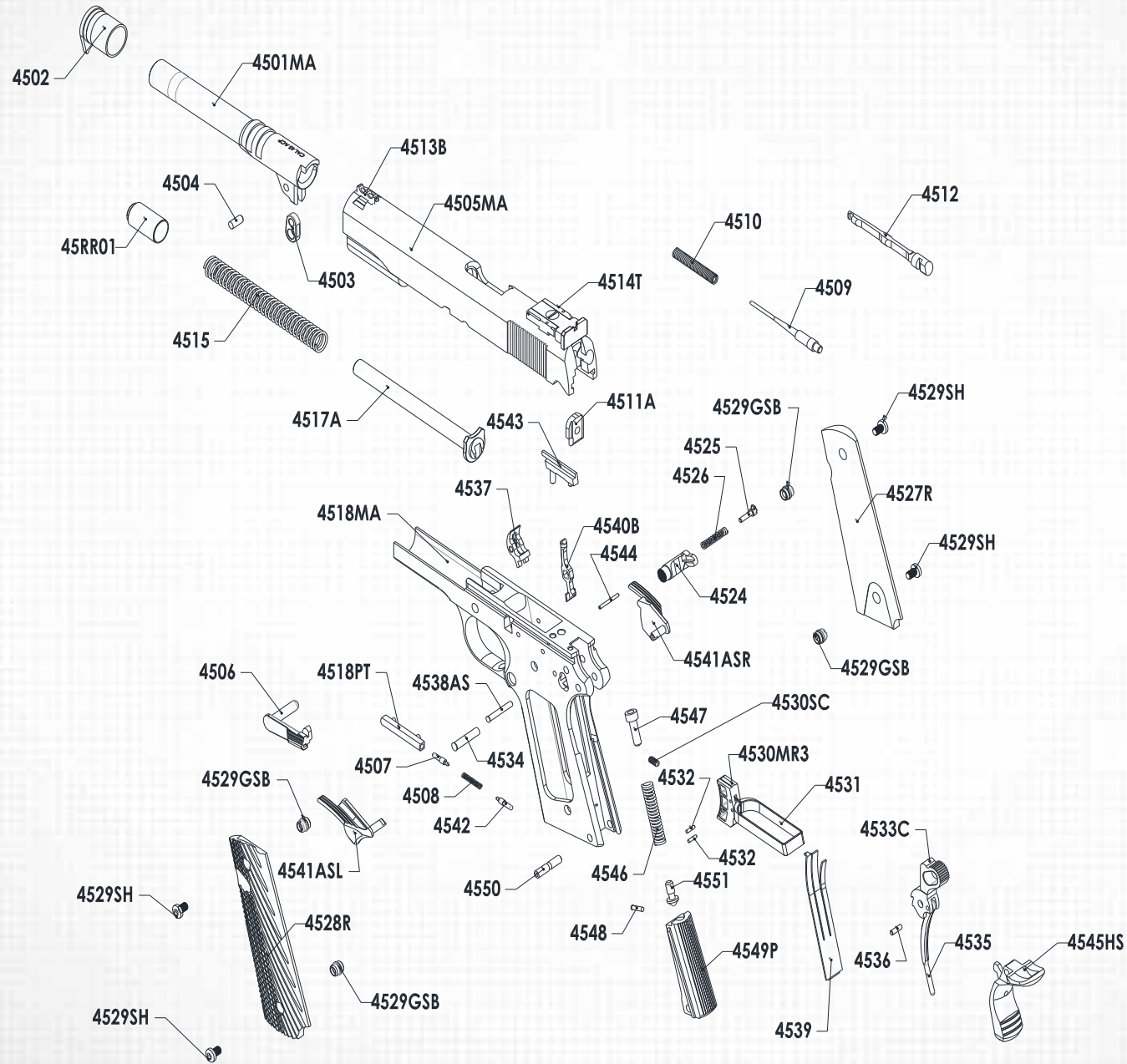
# 31 | EXPLODED VIEWS

## 45 TAC ULTRA FS HIGH CAP



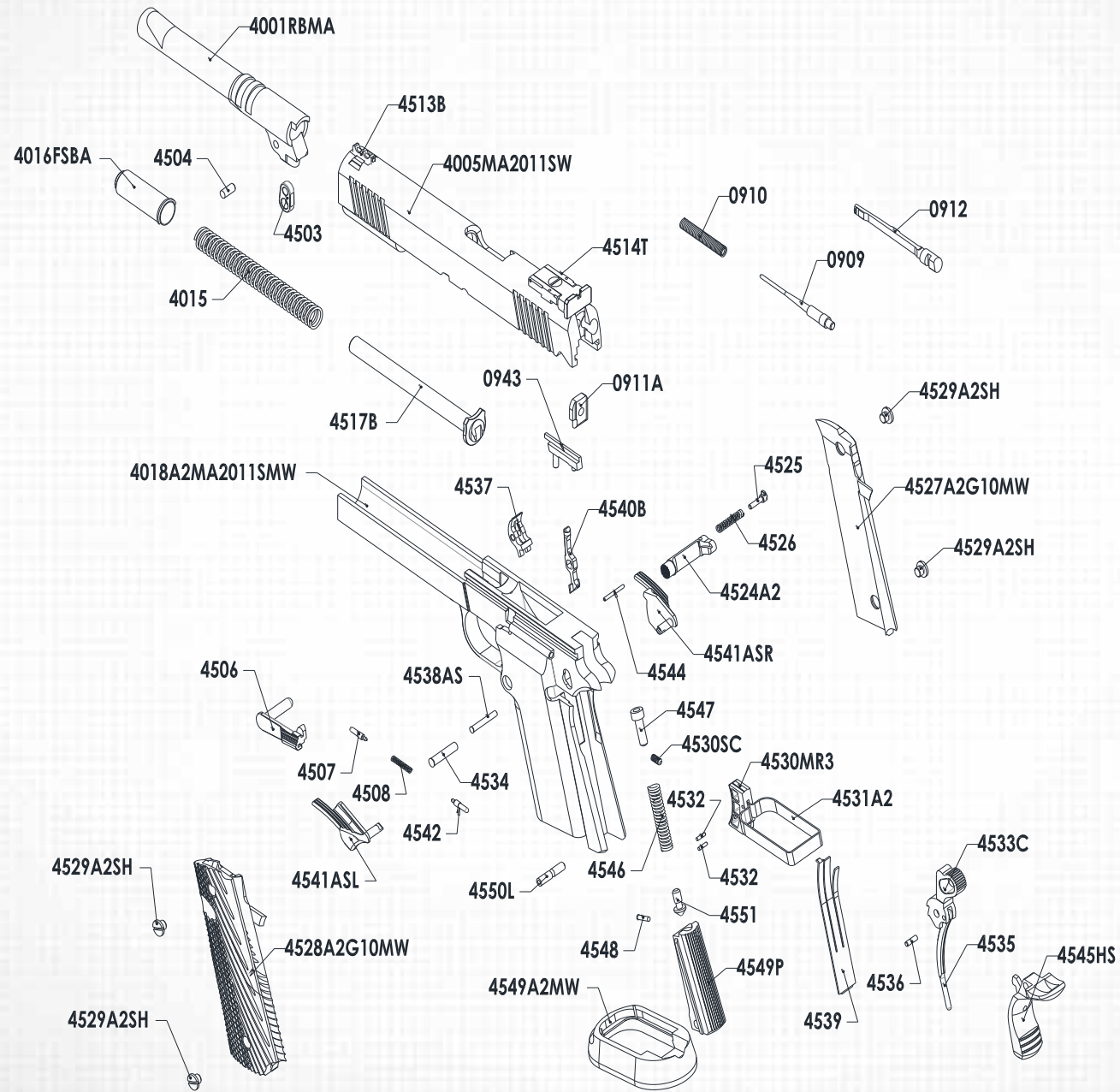
# 32 | EXPLODED VIEWS

## 45 PRO MATCH ULTRA



# 33 | EXPLODED VIEWS

## 45 S&W PRO MATCH TAC ULTRA HIGH CAP



# 34 | MAINTENANCE

## AMMUNITION



The firearm is chambered for cartridges with bullets in the round nose configuration. (NOTE: Use of wadcutter bullets may require extra adjustment of the barrel feed ramp by a competent gunsmith). Use factory loaded cartridges manufactured in accordance with industry standard. Always examine your ammo particularly on and around the primer before loading the magazine. Look for dents, scratches, improper crimping, loose case mouths and other signs of damage.

## LOADING THE MAGAZINE



Grasp magazine in one hand and place a round on the magazine followers with the base of shell first and push down. Let the cartridge slide under the feed lips until base of cartridge touches the flat edge of the magazine. Place next round on top of previous round, press down again and into back. Repeat until the magazine is loaded to its rated capacity. Do not exceed capacity.

## LOADING



Do not load live ammunition into your firearm until you are ready to use it. Keep the muzzle pointing in a safe direction, well clear of your body when loading and unloading.

## LOADING THE PISTOL



Keep pistol pointed in a safe direction and keep your finger outside the trigger guard when doing this procedure.

When pistol is clear and empty of shells or cartridges, insert the loaded magazine into the magazine well with bullets pointing forward. Push the magazine firmly home until magazine catch is heard to click ensuring it is locked in place.

When you are ready, prepare the gun for firing by grasping the slide at its rear serrated gripping grooves and pulling it rearward to fully cock the hammer.

Releasing the slide affects the feeding of the first cartridge from the magazine into the chamber. **YOU ARE NOW LOADED, COCKED AND READY TO FIRE.**

Push up the manual thumb safety with your thumb into the SAFE position ("cocked and locked"). When you are ready to shoot, push the manual thumb safety down with your thumb into the FIRE position, make sure your target is in your sights, put your index finger on the trigger and squeeze the trigger. Resist thinking of this as "pulling" the trigger because a quick, jerking pull will likely cause your aim to be disturbed by the excessive finger movement.

After the first round is fired, ease your finger off the trigger to release it, allowing it to re-set for you to fire the next shot. Repeating this sequence will eventually empty the magazine, and when that happens, the slide will remain at the rear of the frame with the slide stop holding it back at the rear. When you stop shooting, treat the pistol as if it is still loaded, point the muzzle in a safe direction, remove your finger from the trigger and keep your finger outside the trigger guard.

## UNLOADING THE PISTOL



Place your free hand under the magazine to prevent it from falling and press the magazine catch to release and eject the magazine. Check the chamber for an un-extracted shell or unfired cartridge and remove such from the chamber. Press the slide stop down to allow the slide to move forward to its normal position. The pistol is now unloaded.

## MAINTENANCE

Keeping your firearm clean and properly lubricated will extend its serviceable life. Proper and efficient functioning depends on how you take care of the precision mechanisms of your firearm.

## FIELD STRIPPING: DISASSEMBLY

1. Press the magazine release and remove the magazine. Pull the slide back and check the chamber to ensure that the pistol is unloaded and safe to handle.
2. Press the recoil spring plug with your thumb and rotate the barrel bushing clockwise.  
NOTE: For bull-barreled pistols, proceed to number 4.
3. Slowly allow the plug and recoil spring assembly to move forward. Do not remove yet as this will keep the recoil spring guide in place.
4. Pull the slide back until the lug on the slide stop is opposite the disassembly notch and push rounded end of pin of slide stop found at right side of the frame. Push inward and through the frame and disengage slide stop from slide and frame.
5. Pull the slide forward on its guide rails in the frame. The barrel bushing, recoil spring, recoil spring guide rails in the frame. The barrel, barrel bushing, recoil spring, recoil spring guide and recoil spring plug will come out with it.  
NOTE: For bull barreled pistols, caution must be observed to keep the recoil spring and recoil spring guide in place during the process.
6. Remove the recoil spring guide and plug from the slide.  
NOTE: for bull-barreled pistols, see "disassembly of MS, CS and Bull-barreled pistols". For 6" pistols, see "Barrel Disassembly of 6" Pistols".
7. Rotate the barrel bushing to the left as far as it will go and pull it out to the front (this is not applicable for models using a bull-barrel).
8. Tilt the barrel link forward to remove the barrel through the front of the slide.
9. Remove the firing pin by pressing it with a pin while pushing the firing pin stop downwards at the same time and out of the slide.
10. Pry the extractor with a pin by its groove out of the slide.

## 36 | MAINTENANCE

### FRAME DISASSEMBLY

Remove the grip panels by unscrewing the grip screws with a properly-sized screw driver to avoid damage on screw heads. Cock the hammer. Hold the thumb piece of the manual thumb safety firmly and pull it out slowly by twisting it back and forth until it is out of the frame.

Carefully lower the hammer by grasping the grip safety and squeezing the trigger while holding on to the hammer to ease it down.

Using the pivot stud of the manual thumb safety, force the hammer pin out of the frame. The hammer and the hammer strut attached to it can now be removed.

Use the end of the hammer strut to push the mainspring housing pin out of the right side of the frame.

Remove the mainspring housing assembly down off its grooves in the frame.

Remove the grip safety and sear spring rearward from the frame.

Use the hammer strut again to push the sear pin from right to left, removing it out of the frame. The sear and disconnecter, both mounted on the sear pin can now be removed from the frame.

Push the magazine release partially and rotate the magazine release lock one quarter turn from right to left with properly-sized screw driver to remove the magazine release assembly from the frame.

Remove the trigger assembly from its recess cuts in the frame.

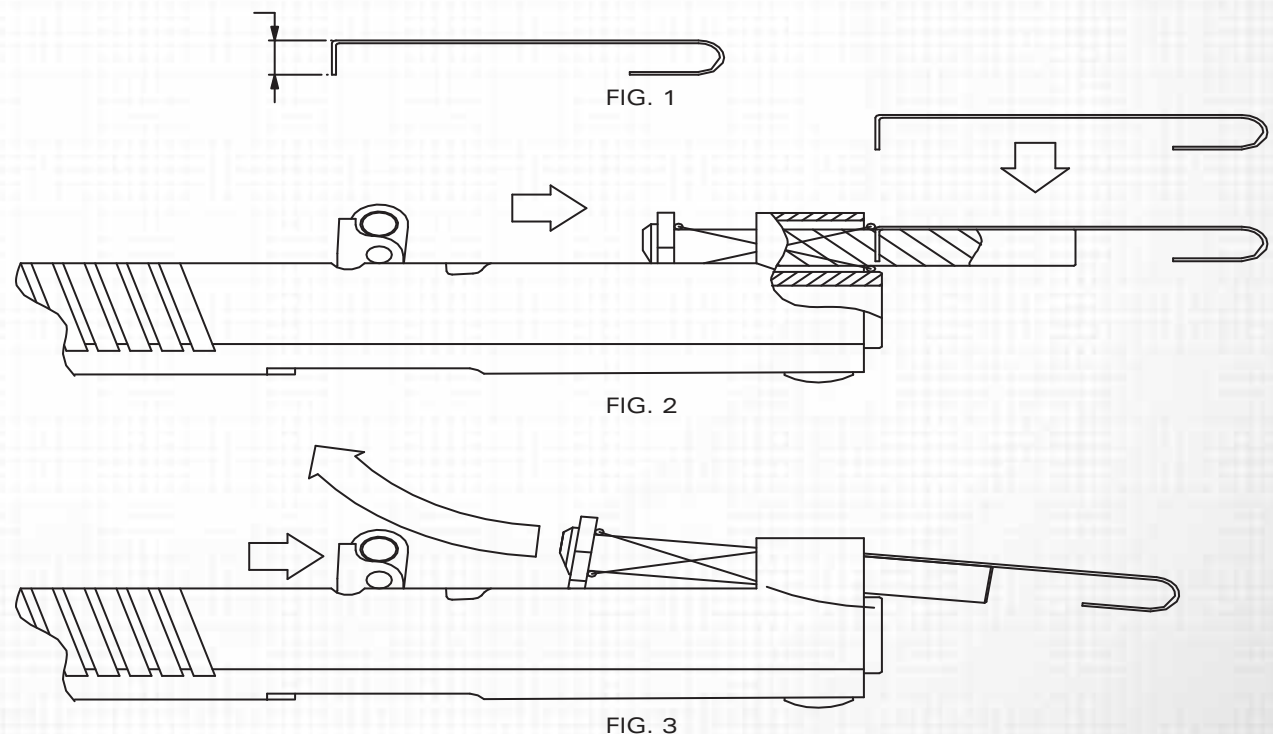
Push the combination slide and safety lock plungers, and the spring between them out to the rear of the plunger tube.

The mainspring housing assembly is dismantled by forcing the mainspring down with a punch and push the mainspring cap pin out of its hole in the mainspring housing. The mainspring cap, mainspring and mainspring housing pin retainer can now be removed from the housing.

### DISASSEMBLY OF MS, CS AND FS BULL-BARRELED PISTOLS

Disassembly of the MS and CS pistols and FS bull-barreled pistols is done by first removing the slide stop and separating the slide - barrel - recoil assembly from the frame. The recoil spring guide is then pushed forward compressing the recoil spring until the small hole on it comes out of the reverse recoil spring plug (see barrel disassembly). A paper clip with 5/16 inch of its end bent at a 90° angle (fig. 1) is inserted into the hole, trapping the spring assembly (fig. 2). At this point, the recoil spring assembly can now be pulled out rearward of the spring tunnel (fig. 3) and the barrel can be eased forward and out of the slide. No further disassembly is recommended for routine cleaning and maintenance purposes.

5/16" APPROX

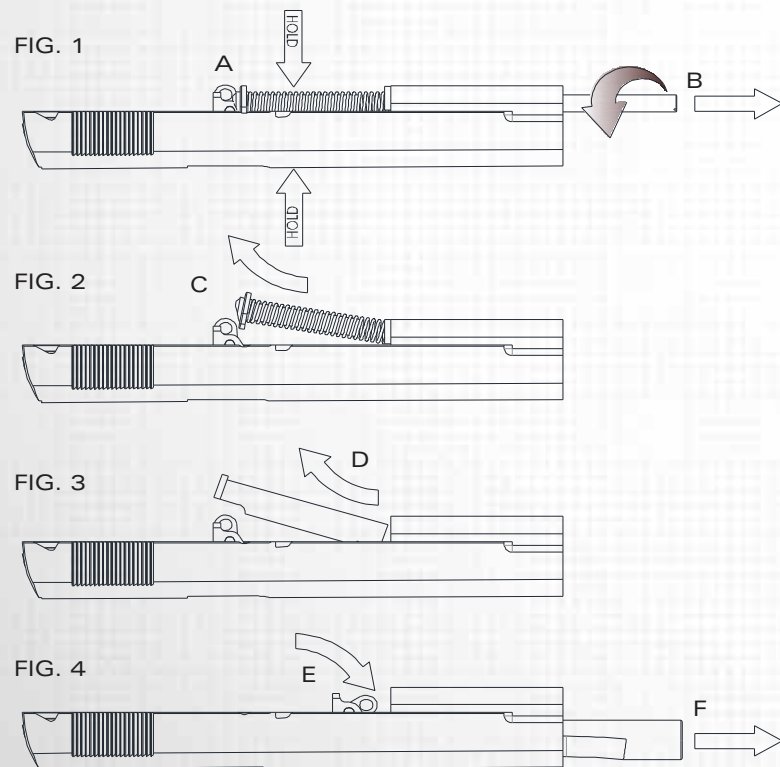


BARREL DISASSEMBLY

# 37 | MAINTENANCE

## BARREL DISASSEMBLY OF 6" PISTOLS

Grasp the slide (fig. 1) with the part of the right hand over the recoil spring and guide unit (A) with the slide front end facing towards the left. While holding the unit in this position, turn (B) the guide rod stabilizer front end counter clockwise with the left hand using a slotted-type screw driver until the stabilizer out with the left hand thru the front hold of the slide. (fig. 2) Hold the flange end firmly with the right hand while holding the slide with the left hand, lift it up (C) and out including the spring. CAUTION must be observed while doing this since the spring is under pressure. With the recoil spring remove (fig. 3) slide the recoil spring reverse plug out (D) to the rear of the recoil spring plug hole. (fig. 4) Tilt the barrel link forward (E) then slide the barrel out (F) thru the front end of the slide.



BARREL DISASSEMBLY OF 6" BULL-BARRELED PISTOL

## REASSEMBLY

To reassemble the pistol, the reverse procedure of disassembly is usually followed. Please be guided by the additional instructions for proper assembly.

Mount the barrel and slide assembly on to the frame by holding both slide and frame bottom side up. Barrel link must be tilted to the front as far as it can go and make sure the barrel link pin is flush in its seat. You can now slide the frame forward into the slide rails. Disconnecter and sear are to be assembled together and must be in the proper position. This can be done by first mounting the sear over the disconnecter with the curved section inward and lugs pointing downward. Mount the parts together into the frame by inserting the rounded head of the disconnecter in its hole in the frame so that the flat face of its lower end rests against the trigger stirrup. Partially press the trigger so the holes of the two parts will lineup with that of the frame. Holding them this way, insert the sear pin from the left side of the frame, making sure it passes through both disconnecter and sear. When placing back the sear spring, make sure that the lower end is caught in the slot located at the bottom of the frame handle. The upper end of the left-hand leaf must press forward against the rear face of the sear. While retaining this position, slide the mainspring housing up in its grooves until its end is projecting only about one-eighth of an inch below the edge of the bottom of the frame. Cock the hammer to replace the manual thumb safety. After replacing the hammer, grip safety and manual thumb safety, cock the hammer. Make sure the hammer strut rests on the mainspring cap. Then push the mainspring housing up into the frame to its final position and retain the assembly by driving in the mainspring housing pin.

## BASIC MAINTENANCE OF YOUR FIREARM

Clean your firearm after firing.

Remove the barrel and slide assembly from the frame.

Use a bore brush dipped in a gun cleaning solvent to scrub the barrel bore and chamber and remove all firing residues.

Clean the slide's breech face area. Use an old tooth brush with solvent to remove residue from powder and primers.

Also clean the insides of the slide and barrel locking lugs, frame and slide rails, extractor and firing pin.

After brushing, clean up with a clean, dry cloth and wipe all parts and surfaces clean of solvent. Immediately apply some gun oil to preserve and lubricate the moving parts.

If you are going to store your firearm for an indefinite period of time, apply a thicker film of oil with a lubricant that is acid-free.

Coat the external parts and surfaces with anti-rust oil or gun grease to prevent rusting. To use firearm again from this condition, clean thoroughly and wipe dry again. Check all functions before loading. Moisture and humidity are factors that cause rust and corrosion.

Store your firearm in very dry conditions with very low humidity. Avoid leather as this holds moisture. Oil coated plastic bags are better.



# 38 | MAINTENANCE

## CARE AND MAINTENANCE

With proper care, your 1911 A1/A2 PISTOL will provide you with years of dependable service. It should be inspected, cleaned and oiled periodically to ensure that it remains in good condition and functions safely and reliably. Under normal cleaning purposes, field stripping or dismounting of the slide and barrel assembly is sufficient.

## CLEANING

To clean the pistol after firing, first dismount the slide and barrel assembly. Scrub the barrel bore and chamber with a bore brush dipped in a firearm cleaning solvent to remove firing residue and foreign matter left inside. Using an old toothbrush dipped in solvent, clean the areas around the slide's breech face to remove powder and primer residues. Other parts and areas to be cleaned are the frame and slide rails, firing pin, extractor claws and other adjacent areas. After cleaning, wipe all surfaces with a clean dry cloth to remove all traces of the solvent and apply a light film of oil immediately thereafter.

To clean the pistol thoroughly, disassemble all parts to the extent described above, taking care not to ruin or lose any part. Clean and inspect all parts then dry and lubricate very lightly. Reassemble the pistol, dry the barrel chamber and bore, and check the firearm for proper function before loading live ammunition.



SCAN QR

SEE FULL VIDEO TUTORIALS ON OUR  
**WEBSITE**

\*for 6" pistol assembly and disassembly please refer to our website.

### STORAGE AND TRANSPORTATION

When storing the firearm and ammunition, store in separate locations, store ammo in a cool, dry location.

When storing the gun for a prolonged period of time, It is necessary to oil it heavily with an acid-free lubricant. The external parts must be coated with an anti-rust oil or grease to prevent moisture causing the parts to rust and malfunction. Before usage, the pistol must be cleaned and wiped dry again as discussed previously.

#### **WARNING:**

*CHILDREN ARE ATTRACTED TO AND CAN OPERATE FIREARMS THAT CAN CAUSE SEVERE INJURIES OR DEATH. PREVENT CHILD ACCESS BY ALWAYS KEEPING FIREARMS LOCKED AWAY AND UNLOADED WHEN NOT IN USE. IF YOU KEEP A LOADED FIREARM WHERE A CHILD OBTAINS AND IMPROPERLY USES IT, YOU MAY BE FINED OR SENT TO PRISON.*

#### **WARNING:**

*THE FIREARM SHOULD BE RE-STORED IN ROOMS WITH A DRY ATMOSPHERE AND WITH THE LEAST HUMIDITY. IT SHOULD NOT BE STORED ENCASED IN LEATHER OR ANYTHING THAT WILL ATTRACT AND HOLD MOISTURE, CAUSING IT TO RUST.*

## ORDERING PARTS

Visit RIA website to browse, learn more about and purchase parts and ammunition for all of your Rock Island Armory products.

 [www.advancedtactical.com](http://www.advancedtactical.com)



## WARRANTY REGISTRATION

Armcor's warranty covers its firearms and parts. We offer limited lifetime warranty on our products for their intended purpose. As with any product, abuse, gunsmithing by an unqualified person and normal wear and tear are excluded. Additionally, if the firearm was modified and/or repaired by an unqualified gunsmith without permission from Armcor, then the warranty will be void. If warranty work should be required, return the firearm to the address listed below. There is no refund for the shipping cost. Gunsmithing services are available by registered Armcor Gunsmithers. Please email the address below.

To register your firearm, please go to [www.rockislandarmory.com/support-center/warranty/](http://www.rockislandarmory.com/support-center/warranty/) and complete online warranty form. In comments section, write warranty registration and press submit. You can also go to [www.rockislandarmory.com](http://www.rockislandarmory.com) and press warranty section at the bottom.

For more information on warranty, visit [www.rockislandarmory.com](http://www.rockislandarmory.com), or email [support@armcor.com](mailto:support@armcor.com)

Armcor Precision International  
150 North Smart Way  
Pahrump, NV 89060  
Email: [support@armcor.com](mailto:support@armcor.com)

## IMPORTANT WARRANTY INFORMATION

Our Rock Island Armory 1911 Pistols are warranted to function only with Factory FMJ Brass Cased Ammo and the Original Factory Magazine. Use of Handloads is not covered in Warranty of Repair for the function of the Firearm.

DUE TO THE FIT AND TIGHTNESS OF FIREARM, RIA RECOMMENDS A BREAK-IN PERIOD OF 500 ROUNDS.

### THIS IS HOW YOU VOID YOUR WARRANTY

- \* Refinishing your RIA firearm
- \* Misuse, Mishandling, Dropping your RIA Firearm
- \* Firing Remanufactured or Reloaded Ammunition
- \* Not properly reassembling your RIA Firearm resulting in damage, ie reverse plugs!
- \* Any addition of after market parts
- \* Unauthorized repairs done by any other than Rock Island Armory

### LIMITS ON WARRANTY (will not cover)

- \* Finish, Holster wear, Scratches, Chemical damage
- \* After Market Magazines
- \* Damage to Factory Magazines
- \* Sights not installed by Rock Island Armory
- \* Recoil Springs

WE RESERVE THE RIGHT TO CHARGE FOR LABOR, PARTS AND SHIPPING TO RETURN YOUR RIA FIREARM BACK TO FACTORY SPECIFICATIONS IF IT HAS BEEN ALTERED.

## NOTES



[WWW.ROCKISLANDARMORY.COM](http://WWW.ROCKISLANDARMORY.COM)

