



HENRY®

Made In America, Or Not Made At All

HenryUSA™

Henry Lever Action Side Gate

*Instruction Manual For All H009 and H010 Series
Side Loading Gate Rifles*



Important:
Study this instruction manual
carefully before you handle this firearm.

IS A REGISTERED TRADEMARK
OF THE HENRY REPEATING ARMS COMPANY

TEL. **201-858-4400** | FAX. **201-858-4435**

WEBSITE. **www.henryusa.com**

Made in America



WARNING: BEFORE USING FIREARM, READ AND FOLLOW THESE INSTRUCTIONS.

If there is anything you do not understand,
get help from someone qualified to teach the safe handling of firearms.

THE HENRY GUARANTEE

Thank you very much for spending your hard earned money to purchase a Henry. I certainly appreciate it and welcome you to the Henry family. As an owner of a Henry, you are backed by our lifetime warranty and my personal guarantee for 100% satisfaction. I will do what it takes to make certain you are happy with your purchase.

Sincerely,

Anthony Imperato

Henry Repeating Arms

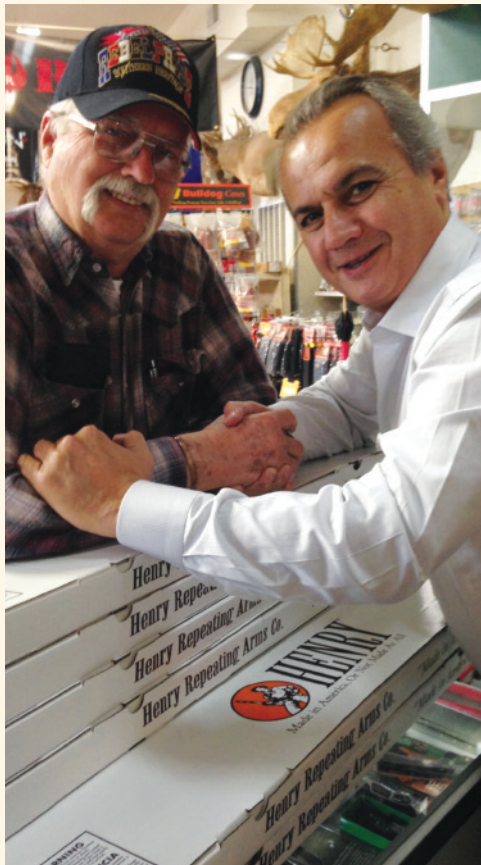
Telephone: 201.858.4400

Web: www.henryusa.com

We are confident that you'll enjoy and be proud to own any of our Henry firearms, well known for their reliability, accuracy, handsome looks and smooth action.

Our goal has and always will be to manufacture a line of classic, well-crafted firearms that every enthusiast would find readily affordable.

We take great pride in manufacturing our shotguns in the United States, hence our corporate motto "Made in America, or Not Made at All".



HENRY[®]
Made In America,
Or Not Made At All

Use the space below to record information about your new firearm.

Serial Number _____

Caliber _____

Purchase Price _____

Purchased From _____

Date of Purchase _____

Henry Repeating Arms Company
59 East 1st Street
Bayonne, NJ 07002

If you have any questions or comments regarding your new Henry firearm, please feel free to write or call us.

SIMPLE LIMITED LIFETIME WARRANTY ON ALL HENRY FIREARMS

It is our promise to you that as long as you own your Henry firearm, it will be free from defects in material and workmanship from the manufacturer. If you have a problem with your Henry firearm, we will fix it at no charge to you. Henry Repeating Arms shall repair, send replacement parts or replace the firearm with a valid warranty claim. If a complete replacement is necessary, the original firearm will not be returned. Henry RAC will provide repairs or replacement at no charge, but will not offer cash, credit, or refund.

WE RESERVE THE RIGHT TO REFUSE SERVICE ON FIREARMS THAT HAVE BEEN ALTERED, ADDED TO, OR SUBSTANTIALLY CHANGED. Removal of metal from the barrel, or modifications of the firing mechanism and/or operating parts, may lead to a refusal of service on such firearms. There will be a charge for parts and labor to return the firearm to original specifications.

DO NOT, UNDER ANY CIRCUMSTANCES, ALTER THE TRIGGER, "SAFETY" OR OTHER PARTS OF FIRING MECHANISM OF THIS OR ANY OTHER FIREARM. FAILURE TO OBEY THIS WARNING MAY RESULT IN INJURY OR DEATH.

NOTICE: Henry RAC shall not be responsible for injury, death, or damage to property resulting from either intentional or accidental discharge of this firearm, or from its function when used for purposes or subjected to treatment for which it is not designed.

Whether or not you are experienced in the safe handling of firearms, we urge you to read this entire instruction manual carefully. You must follow the safety instructions for your safety and the safety of others. Should you have any questions concerning the instructions in this manual, please call us at 201-858-4400.

WARNING: If you have little or no experience in the safe handling and operation of a firearm, we strongly urge you to take a firearms safety course from an NRA Certified Instructor or someone with equivalent qualifications before using this or any other firearm. You can contact the NRA Firearms Education and Safety Division at 703-267-1470 for the name of an instructor in your area, or contact your firearms dealer, law enforcement agency or local sportsman's club for training

Table of Contents

Cautions	
Handling Cautions	4
Terminology and Specs	5
Ammunition	7
Range & Shooting Cautions	7
Operating Instructions	
How to Use Safety	8
Maintenance Before Use	8
How to Load Your Henry	8
How To Operate Your Henry	9
How to Unload Your Henry	9
How to Install Scope Mount	9
How to Adjust Your Sights	9
Malfunction & Troubleshooting	10
How To Clean Your Henry	11
Maintenance	11
Gun Parts	13
Service and Repair	15

CAUTIONS:

GENERAL HANDLING CAUTIONS

Apply the following safety rules in every situation, with any kind of firearm:

ALWAYS TREAT EVERY FIREARM AS IF IT IS LOADED AND WILL FIRE. Do not take anyone's word that the firearm is unloaded - always check for yourself. Never pass your firearm to another person until the cylinder or action is open and you visually check that it is unloaded. Keep your firearm unloaded and safely stored when not in use.

ALWAYS BE SURE OF YOUR TARGET AND WHAT IS BEYOND. A bullet could travel through or past your target for up to 1½ miles. Always be sure your backstop is adequate to stop and contain bullets before beginning target practice so that you do not hit anything outside the range shooting area. If in doubt, don't shoot! Do not fire randomly into the sky.

NEVER SHOOT ACROSS A HIGHWAY OR ANOTHER ROADWAY. ALWAYS POINT YOUR FIREARM IN A SAFE DIRECTION. NEVER point

a firearm at anyone or anything you do not intend to shoot whether or not it is loaded. This is particularly important when loading, unloading, or field stripping the firearm. ALWAYS control the direction of the firearm; if it fires accidentally, injury, death, or damage to property can be avoided.

NEVER PLACE YOUR FINGER INSIDE THE TRIGGER GUARD OR ON THE TRIGGER UNLESS YOU INTEND TO FIRE. You should also take care to ensure that other objects do not touch the trigger.

NEVER USE ALCOHOL OR DRUGS BEFORE OR WHILE SHOOTING. Your vision, motor skills and judgment could be dangerously impaired, making your gun handling unsafe to you and to others. Further, do not use your firearm if you are on any medication which impairs, even slightly, your mental or physical ability.

ALWAYS SEEK A DOCTOR'S ADVICE IF YOU ARE TAKING MEDICATION. Be sure you are fit to shoot and handle your firearm safely.

NEVER SHOOT AT A HARD SURFACE SUCH AS A ROCK OR A LIQUID SURFACE SUCH AS WATER. A bullet may ricochet and travel in any direction to strike you or an object you cannot see, causing injury, death or damage to property.

NEVER DISCHARGE A FIREARM NEAR FLAMMABLE MATERIAL. Flame and sparks erupt from the firearm when discharged. They could start a fire or cause flammable liquids to explode.

ALWAYS BE AWARE OF POSSIBLE RISK FROM DROPPING YOUR FIREARM. Some parts of the mechanism could be damaged. You may not see the damage, but it could be severe. The firearm may discharge and cause injury, death, or damage to property. If your firearm has been dropped, have it examined by a competent gunsmith before using it again.

ALWAYS KEEP AND CARRY YOUR FIREARM EMPTY WITH THE HAMMER IN THE "SAFE" POSITION except when you intend to shoot, so that your firearm cannot be fired when you do not intend to fire it.

NEVER CROSS OBSTACLES SUCH AS FENCES OR STREAMS WITH A LOADED FIREARM. Always make certain your firearm is unloaded before crossing a fence, climbing a tree, jumping a ditch or approaching

other obstacles.

NEVER TRANSPORT A LOADED FIREARM. Keep all firearms unloaded during transport, even when stored in a holster, gun case, scabbard or other container.

NEVER WALK, CLIMB, OR FOLLOW A COMPANION WITH YOUR FIREARM COCKED AND READY TO FIRE. When hunting, hold your firearm so that you can always control the direction of the muzzle.

NEVER LEAVE A LOADED FIREARM UNATTENDED. Someone, especially a child, may fire it and cause injury, death, or damage to property.

ALWAYS INSTRUCT CHILDREN AND NON SHOOTERS TO RESPECT FIREARMS. If you teach your children to shoot or get them trained by a qualified instructor, be certain they know how to use the firearm properly and always supervise them closely. Always stress safety so that your children or others will not fire a rifle when or where it is unsafe to do so.

TERMINOLOGY & DESCRIPTIONS FOR ALL H009G MODELS

Congratulations on your purchase of your Henry Side Gate Lever Action.

The Henry H009 has a steel receiver with a side gate and a round blued steel barrel that is machined with state of the art multiple groove rifling. It is drilled and tapped for easy scope mounting. The magazine holds five rounds that chamber quickly and smoothly thanks to our crisp, perfectly machined action.

SPECS

Action Type

Lever Action

Caliber

.30-30

Capacity

5 Rounds

Barrel Length

20"

Barrel Type

H009G, H009GL, H009GWL -
Round Blued Steel
H009GAW -
Round Hard Chrome Plated
H009GCC -
Octagon Blued Steel

Rate of Twist

1:12

Overall Length

39"

Weight

7 lbs.
H009GCC - 8.54 lbs

Receiver Material

Steel

Receiver Finish

H009G, H009GL, H009GWL -
Blued Steel
H009GAW -
Industrial Hard Chrome Satin
H009GCC -
Color Case Hardened Steel

Rear Sight

Fully Adjustable Semi-Buckhorn
w/ Diamond Insert

Front Sight

Brass Bead

Scopeability

Drilled and Tapped

Scope Mount Type

Weaver 63B

Stock Material

H009G, H009GL, H009GWL -
American Walnut
H009GAW -
Stained Hardwood

Stock Style

H009G, H009GL, H009GWL -
Checked Straight Grip
H009GAW -
Straight Grip

Buttplate/Pad

H009G, H009GL, H009GWL -
Black Solid Rubber
H009GAW -
Black Ventilated Rubber

Length of Pull

14"

Safety

Transfer Bar

Handing

L/R

Best Uses

Target/Hunting/Large Game, Deer,
Elk, best at up to 125 yards

Embellishments/Extras

Swivel Studs, Side Gate,
Large Loop on H009GL

TERMINOLOGY & DESCRIPTIONS FOR ALL H010G MODELS

Congratulations on your purchase of your Henry Side Gate Lever Action.

The Henry H010 has a steel receiver with a side gate and a round blued steel barrel that is machined with state of the art multiple groove rifling. It is drilled and tapped for easy scope mounting. The magazine holds five rounds that chamber quickly and smoothly thanks to our crisp, perfectly machined action.

SPECS

Action Type

Lever Action

Caliber

.45-70

Capacity

4 Rounds

Barrel Length

H010G, H010GAW, H010GAWP,
H010GWL - 18.43"
H010GCC - 22"

Barrel Type

H010G, H009GWL -
Round Blued Steel
H010GAW, H010GAWP - Round
Hard Chrome Plated
H010GCC -
Octagon Blued Steel

Rate of Twist

1:20

Overall Length

H010G, H010GAW, H010GAWP,
H010GWL - 37.5"
H010GCC - 41.1"

Weight

7.08-7.10 lbs.
H009GCC - 8.10 lbs

Receiver Material

Steel

Receiver Finish

H010G, H009GWL - Blued Steel
H010GAW, H010GAWP -
Industrial Hard Chrome Satin
H010GCC -Color Case
Hardened Steel

Rear Sight

Fully Adjustable Semi-Buckhorn
w/ Diamond Insert
H010GAWP - Full Length
Picatinny Rail

Front Sight

Brass Bead
H010GAWP - Fiber Optic

Scopeability

Drilled and Tapped

Scope Mount Type

Weaver 63B

Stock Material

H010G, H010GWL, H010GCC -
American Walnut
H010GAW, H010GAWP -
Stained Hardwood

Stock Style

H010G, H010GAW, H010GAWP
- Pistol Grip
H010GCC, H010GWL -
Checked Pistol Grip

Buttplate/Pad

Black Ventilated Rubber

Length of Pull

14"

Safety

Transfer Bar

Handing

L/R

Best Uses

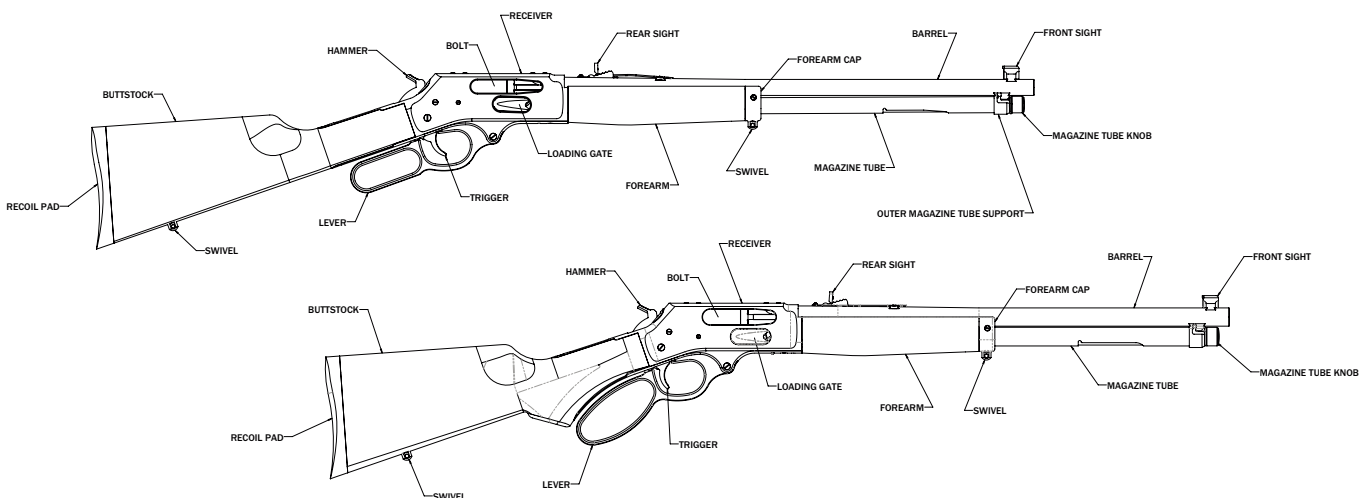
Target/Hunting/Large Game, Deer,
Elk, best at up to 125 yards

Embellishments/Extras

Swivel Studs, Side Gate

HENRY SIDE-GATE .30-30 LEVER ACTION H009G SERIES (TOP)

HENRY SIDE-GATE .45-70 LEVER ACTION H010G SERIES (BOTTOM)



AMMUNITION

Your Henry Side-Gate is a lever action rifle utilizing a tubular feed side loading magazine.

DO NOT USE ALUMINUM CASED ROUNDS

AMMUNITION SELECTION

ALWAYS USE THE CORRECT AMMUNITION FOR YOUR PARTICULAR FIREARM. Henry Repeating Arms Firearms are designed to function with a variety of brands and types of factory manufactured ammunition in the appropriate caliber, but not all ammunition produces the same result. Be sure the only ammunition you carry correctly matches the gauge or caliber you are shooting. Never use non-standard, reloaded, or "hand-loaded" ammunition which has not been subjected to internal ballistic pressure testing. Henry RAC recommends that after you read and understand this manual, you go to the range and fire different ammunition which is appropriate to the caliber of your firearm. Once you find the ammunition which functions best, keep using it.



RANGE & SHOOTING CAUTIONS

ALWAYS DESIGNATE A KNOWLEDGEABLE AND RESPONSIBLE PERSON TO BE IN CHARGE TO MAINTAIN SAFETY CONTROL WHEN A GROUP IS FIRING ON A RANGE. Obey their commands so that discipline is maintained to reduce the possibility of accidents.

ALWAYS CARRY YOUR FIREARM EMPTY WITH THE ACTION OPEN WHILE ON A RANGE until preparing to fire and keep it pointing towards the backstop when loading, firing, and unloading to eliminate the risk of injury, death or damage to property.

ALWAYS KEEP THE HAMMER IN THE UNCOCKED POSITION UNTIL YOU ARE READY TO FIRE. This will minimize the risk of an accidental discharge.

ALWAYS WEAR EYE AND EAR PROTECTION SPECIFIED FOR USE WITH FIREARMS. Flying particles could damage eyes and cause blindness. Without ear protection, the noise of even one shot from your rifle and from other guns close to you could leave a "ringing" in the ears for some time after firing and the cumulative long term effect could be permanent hearing loss. Make sure others in the vicinity of where you are shooting are doing so as well.

ALWAYS KEEP CLEAR AND KEEP OTHERS CLEAR OF THE EJECTION PORT. Spent ammunition is ejected with enough force to cause injury. The ejection port must also be unobstructed by your hand to insure safe ejection of spent rounds. Never place fingers in ejection port - they could be burned by hot metal or injured by the bolt moving forward.

NEVER PUT YOUR FINGER INSIDE THE TRIGGER GUARD UNTIL YOU ARE AIMING AT A TARGET AND READY TO SHOOT. This will prevent you from firing the firearm when it is pointing in an unsafe direction.

NEVER JOKE AROUND OR ENGAGE IN "HORSEPLAY" WHILE HANDLING YOUR FIREARM. Doing so could cause an accidental discharge.

OPERATING INSTRUCTIONS

FOR YOUR HENRY SIDE GATE RIFLE

TRANSFER BAR SAFETY



This firearm is designed with an ultra-safe patented Transfer Bar Safety Mechanism. This safety system prevents the gun from being fired under all circumstances, except when the hammer is fully cocked and the trigger is pulled. If the hammer is fully cocked and the trigger is pulled, the gun would fire as normal. However, if the hammer is fully cocked and is accidentally dislodged by some other means other than the trigger being pulled, the gun will not fire. If the hammer is in the process of being cocked and is accidentally released and dropped into the fired

down position, before it is fully cocked, the gun will not fire. This rifle can be safely carried fully loaded with the hammer in the fired down resting position. Please note that this rifle does not have a half cock safety position nor a crossbolt safety. If you do not have a full understanding of how the safety system works, please call us immediately at 201-858-4400 and ask for technical assistance.

PRIOR TO LOADING YOUR HENRY RIFLE

Prior to loading your rifle, make certain that it is not already loaded. Point the muzzle in a safe direction, swing the lever down, and pull it back. If a cartridge ejects, proceed with directions on how to unload the magazine tube and empty the chamber.

MAINTENANCE BEFORE USE

Before using your firearm for the first time, it should be cleaned. (See the cleaning instructions.) Your firearm was treated at the factory with either a preservative or oil to protect it against corrosion during shipping and storage. Preservative and oil should be wiped from the bore, chamber and exposed areas using a clean swab or patch before using the firearm.

Purchase cleaning supplies that are specifically designated for your type and caliber of firearm. Many suppliers offer these in kit form for your convenience. Follow the instructions provided. Whenever your firearm has been exposed to sand, dust, extreme humidity, water or other adverse conditions, it should be cleaned and lubricated.

HOW TO LOAD YOUR HENRY RIFLE (2 WAYS TO LOAD)

The Side-Gate can be single loaded. To load the chamber directly, first open the action by pushing the lever down.

WARNING! The firearm is now loaded with a cartridge in the chamber.

1. To Load the Magazine:

With the hammer down and the chamber empty, close the bolt by pulling the lever fully rearward. Insert a cartridge, bullet end first, by pushing the loading gate with the nose of the cartridge.

NOTE: Always check the cartridge for the correct designation before loading the firearm. Match the ammunition head stamp to the barrel markings.

2. To Load the Magazine Tube

This firearm also uses a tube feed brass inner magazine tube to hold cartridges. Cartridges are loaded into the cutout in the blued outer magazine tube located underneath the barrel. Important - when loading the action must be closed with the hammer in the uncocked position (fired down position). Rotate the inner magazine tube to disengage. Pull the inner magazine tube out until the follower (the orange part at the end of the inner magazine tube) clears the loading port in the outer magazine tube. You can either remove the brass inner magazine tube completely or keep it positioned in the outer magazine tube just past the loading port. With the muzzle pointed upward, insert the rimmed end of the cartridges into the loading port in the outer magazine tube and allow them to slide down towards the action. Do not exceed the capacity of the magazine. Next, push the inner magazine tube back down into position, and lock it into place. The rifle is now ready for operation.

HOW TO OPERATE YOUR HENRY SIDE-GATE LEVER ACTION RIFLE

The rifle will be ready to fire by moving the hammer to the cocked position and pulling the trigger. If you are not ready to fire, place your thumb on the hammer and disengage the hammer by pulling the trigger slightly rearward. Immediately release the trigger while still holding the hammer and bring the hammer into the fired down position. If you do not fire all the cartridges in the magazine, be sure to put the hammer in the safe position until you are ready to shoot again.

UNTIL A VISUAL CHECK HAS BEEN MADE, YOU SHOULD ASSUME THAT A LIVE ROUND REMAINS IN THE CHAMBER.

HOW TO UNLOAD THE MAGAZINE & CHAMBER OF YOUR HENRY SIDE-GATE LEVER ACTION RIFLE

To unload the magazine and chamber, the hammer should be resting in the fired down position. With the rifle pointing upward, withdraw the inner magazine tube. Tip the gun downward, allowing cartridges to slide out into a container. Replace the inner magazine tube. Open the action again, by cycling the lever, to make certain that there are no cartridges in the chamber. Cycle the action multiple times to insure that no live rounds remain in the chamber.

NOTE: The lever must be completely closed and then fully opened to insure proper feeding and ejecting of all the cartridges.

SCOPE MOUNT INSTALLATION

To install a scope mount, first check to see that the rifle is unloaded, then remove the filler screws on top of the receiver. Once the filler screws are removed, use the screws that come with your scope mount kit to attach the mount.

SIGHTS AND SIGHT ADJUSTMENTS

Your Henry Side-Gate Lever Action Rifle is equipped with a Fully Adjustable Semi-Buckhorn rear sight. The rear sight is adjustable for elevation (shooting high and low) and for windage (shooting left and right). Go to

www.youtube.com/watch?v=J6kY_nG3jLw for an instructional video on how to adjust semi-buckhorn sights.

HIGH OR LOW (ELEVATION ADJUSTMENT)

In order to shoot higher, you need to raise the rear sight. In order to shoot lower, you need to lower the rear sight. In order to raise or lower the rear sight, you need to grab the “ears” of the rear sight, and lift it up, in order to move the rear sight elevator, which sits below the ears. Your rifle can be adjusted to shoot higher by moving the rear sight elevator backward by one or more notches.

In order to shoot higher, the rear sight elevator should be moved forward. In addition, the rear sight contains a white diamond insert for fine-tuning height adjustment. This part is held in place by a screw. If you want to shoot higher, raise the insert. If you want to shoot lower, then lower the insert. Loosen the screw to the right of the white diamond, raise or lower as needed to correct elevation, then re-tighten the screw.

LEFT OR RIGHT (WINDAGE ADJUSTMENT)

To adjust your rifle for windage (left/right), we suggest that you move the rear sight to the left or right as desired. The rear sight sits in a dovetail slot cutout in the barrel. Current models will have a screw on the front of the rear sight assembly. This screw must first be loosened, prior to attempting adjustment.

To adjust your rifle for windage use a plastic mallet, or a hammer and a brass wedge to tap it in the direction you want your shots to hit. For example: if you are shooting to the left, you need to tap the sight over to the right to correct the point of impact. Conversely, if you are shooting to the right then you will need to tap the rear sight over to the left.

MALFUNCTION AND TROUBLESHOOTING

NEVER USE YOUR FIREARM IF IT FAILS TO FUNCTION PROPERLY, AND NEVER FORCE A JAMMED ACTION. Forcing the action could make the round explode, causing serious injury, possible death, or severe damage to your firearm or other property.

FAILURE TO FIRE. A misfire occurs when the firing pin strikes the primer and it does not fire. **IF THE FIREARM FAILS TO FIRE DO NOT PUT IT DOWN OR OPEN THE ACTION. ALWAYS HOLD THE FIREARM, KEEPING IT POINTED IN A SAFE DIRECTION AND WAIT 30 SECONDS. IF A HANGFIRE (SLOW IGNITION) HAS OCCURRED, THE ROUND WILL FIRE WITHIN 30 SECONDS.**

If the round does not fire, remove the ammunition, eject the round and examine the shell. If the firing pin indent on the primer is light or non-existent, have the firearm examined by a competent gunsmith before firing again. If the firing pin indent on the primer appears normal (in comparison with similar previously fired rounds) assume you have faulty ammunition. Segregate the misfired round from other live ammunition and empty cases, reload, and carry on firing.

FAILURE TO EXTRACT (FTE). This is when the firearm discharges the round and fails to extract the spent round from the chamber. This could happen because of a bad extractor or bad/damaged casings.

FAILURE TO FEED (FTF). This is simply when the firearm fails to feed another round into the chamber. Put the lever in the open position and clear the ejection port.

NOTE: The ejection port should face the ground; this will allow the round to easily fall out (gravity is your friend here). This will work for both left and right handed shooters.

CLEANING, STORAGE AND MAINTENANCE

CLEANING SAFETY PRECAUTIONS

WARNING: BEFORE PERFORMING CLEANING PROCEDURES, MAKE SURE THE HAMMER IS IN THE FIRED-DOWN POSITION, WHICH ALLOWS YOUR SAFETY TO FUNCTION AS DESIGNED. OPEN THE ACTION AND MAKE CERTAIN YOUR FIREARM IS COMPLETELY UNLOADED. KEEP THE MUZZLE POINTED IN A SAFE DIRECTION. FAILURE TO FOLLOW THESE WARNINGS COULD RESULT IN SERIOUS INJURY OR DEATH.

KEEP ALL AMMUNITION AWAY FROM THE CLEANING AREA. NEVER TEST THE MECHANICAL FUNCTION OF YOUR RIFLE WITH LIVE AMMUNITION. FAILURE TO FOLLOW THESE WARNINGS COULD RESULT IN SERIOUS INJURY OR DEATH.

NOTICE! It is very important that the bore of your rifle be cleaned thoroughly and promptly after shooting. Do not leave discharged (empty) cases in the chambers for any length of time, as the chemical composition of many cartridges contain moisture which can “sweat” out of the shell and onto the chambers’ surfaces, and possibly cause corrosion and rust.

HOW TO CLEAN YOUR HENRY RIFLE

Regular cleaning is important in order for your gun to operate efficiently and safely. Taking proper care of it will also maintain its value and extend its life.

In order to clean it, we suggest that you first open the action by cycling the lever down/forward. Use a brand name cleaning kit and follow the manufacturers instructions.

Note: Use a brand name cleaning kit and clean the bore from the breech end. Then clean the bolt and oil it before replacing. To reassemble, simply do the reverse.

MAINTENANCE BEFORE STORAGE

When storing your firearm, do not encase it in anything that will attract or hold moisture, for example, leather or heavy cloth. Also, do not store firearms with a plug inserted in the barrel because this can be a contributing factor to moisture accumulation.

If your firearm is to be stored for an extended period, the bore, chamber and internal surfaces should be oiled with a high-quality lubricating oil or preservative intended for firearms. The external parts; receiver, bolt and barrel should be coated with an anti-rust oil.

Before using your firearm again, be sure to clean it. Every time you clean your firearm, check it for signs of wear. If wear is noted, do not use the firearm, have it checked by a qualified gunsmith.

Make sure your firearm is in good mechanical condition before firing it. Periodically have your firearm checked for signs of erosion, cracking, or wear by the factory or a factory certified gunsmith.

STORAGE SAFETY AND PRECAUTIONS

NEVER LOCK A LOADED FIREARM AND NEVER LOAD A LOCKED FIREARM!

ALWAYS CHECK TO MAKE SURE YOUR FIREARM IS NOT LOADED BEFORE CLEANING, STORING, TRANSPORTING IT, LAYING IT DOWN, OR HANDING IT TO ANOTHER PERSON so that it cannot be fired when it is unsafe to do so.

ALWAYS KEEP AND STORE YOUR FIREARM AND AMMUNITION IN SEPARATE, LOCKED LOCATIONS, OUT OF

REACH AND SIGHT OF CHILDREN AND UNTRAINED PERSONS. Safe and secure storage of your firearm and ammunition are your responsibility.

NEVER LEAVE THE KEY TO THE LOCK FOR YOUR FIREARM WITH THE STORED FIREARM!

NEVER ASSUME THAT A "HIDING" PLACE IS A SECURE STORAGE METHOD. Others may be aware of your storage location or come upon it by chance. It is your personal responsibility to use common sense when storing your firearm and ammunition and to always make sure they are not accessible to children or other unauthorized persons.

NOTE: Do not store your firearm in an air-tight container, and do not seal or attempt to seal the barrel to exclude dust, as the internal steel surface is more likely to rust or corrode by doing this.

BEWARE OF BARREL OBSTRUCTIONS. Be sure the barrel is clear of obstructions before shooting. Mud, water, snow or other objects may inadvertently lodge in the barrel bore. A small obstruction can cause a dangerous increase in pressure and may damage your firearm and cause injury to yourself and others.

BEFORE CHECKING FOR A BARREL OBSTRUCTION, BE CERTAIN YOUR FIREARM IS COMPLETELY UNLOADED. After assuring yourself that the firearm is completely unloaded, open the action and look through the barrel to be sure it is clear of obstructions. If an obstruction is seen, no matter how small it may be, clean the bore with a cleaning cord or a patch as described in the **CLEANING** section of this owner's manual.

BE SURE ALL ACCESSORIES, SUCH AS SLINGS, SCOPES AND OTHER ACCESSORIES ARE COMPATIBLE WITH YOUR PARTICULAR FIREARM AND THAT THE ACCESSORIES DO NOT INTERFERE WITH ITS SAFE OPERATION.

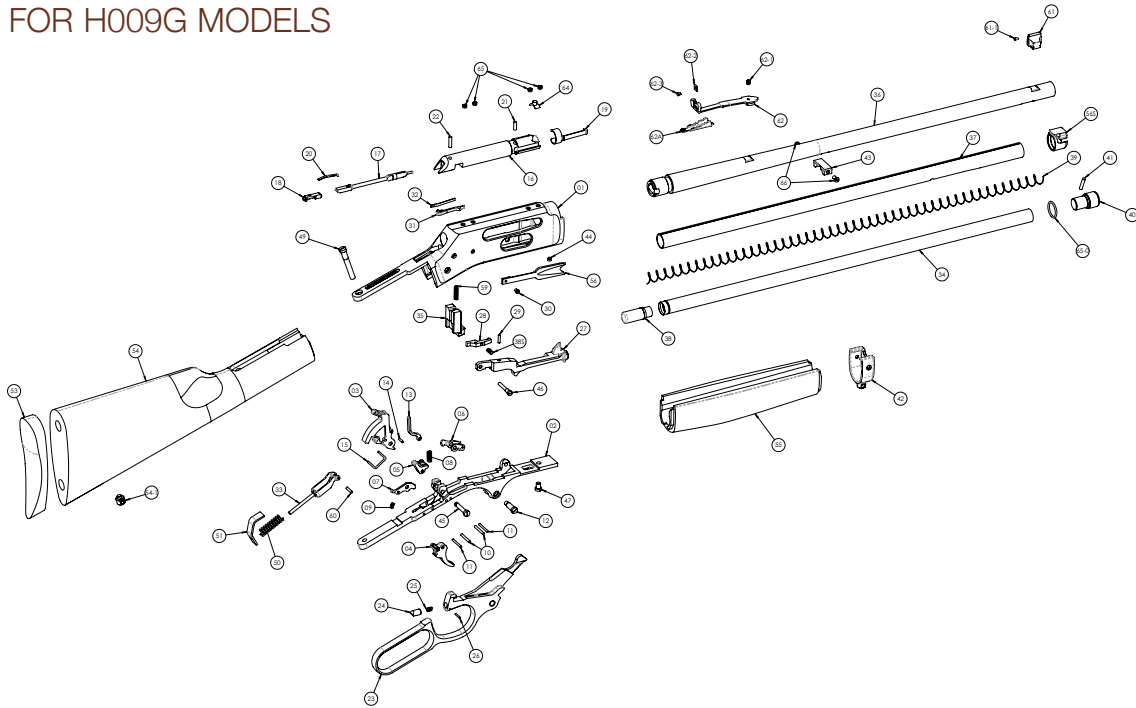
It is your responsibility to understand and follow all of the instructions in the safety manual that accompanied your firearm, as well as those which may be supplied with your ammunition and any accessory.

NEVER DISASSEMBLE YOUR FIREARM BEYOND THE FIELD STRIPPING PROCEDURE OUTLINED IN THIS MANUAL. Improper disassembly or reassembly of your firearm may be dangerous and can lead to serious injury or death.

NEVER MANIPULATE, ADJUST OR CHANGE ANY OF THE INTERNAL COMPONENTS OF YOUR FIREARM UNLESS SPECIFICALLY INSTRUCTED TO DO SO IN THIS MANUAL. Improper manipulation of any other internal component may affect the safety and reliability of your firearm and may cause serious injury or death.

NEVER ALLOW ANY ALTERATION OR REPLACEMENT OF PARTS IN YOUR FIREARM UNLESS PERFORMED BY A QUALIFIED GUNSMITH USING AUTHORIZED PARTS. If you do otherwise, improper functioning of your firearm may occur and serious injury or death and damage to property may result.

ILLUSTRATION OF PARTS FOR H009G MODELS

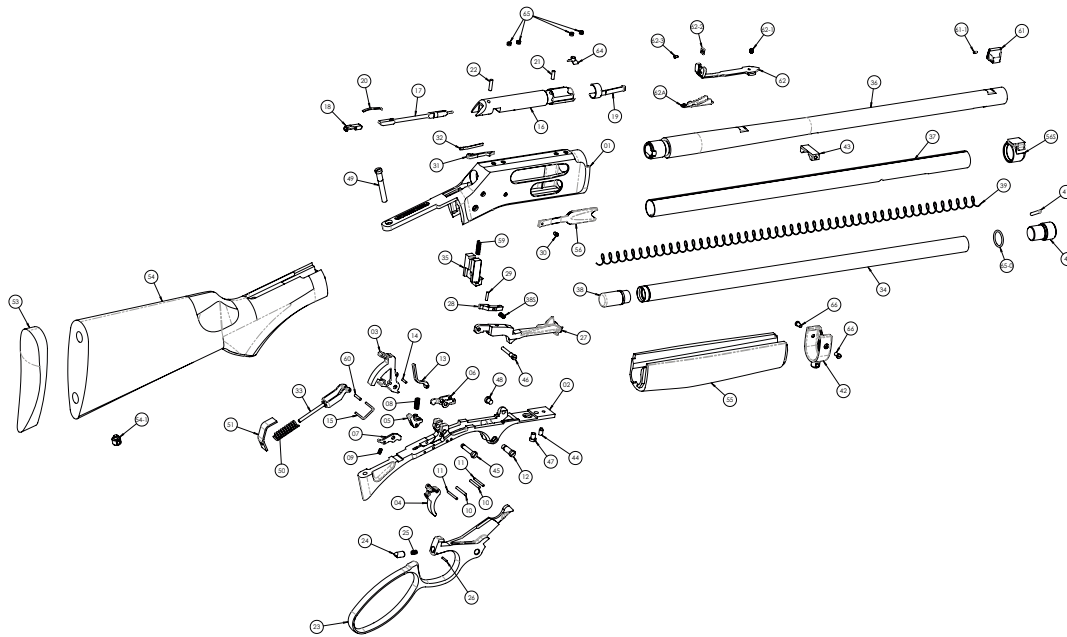


LIST OF PARTS FOR H009G MODELS

01	Receiver	18	Firing Pin-Rear	36	Barrel	54-1	Swivel Screw
02	Trigger Guard Plate	19	Extractor	37	Outer Mag. Tube	55	Forearm
03	Hammer	20	Firing Pin Spring	38	Follower	56	Loading Gate
04	Trigger	21	Firing Pin Ret. Pin-Front	38S	Carrier Dog Spring	56S	Outer MagTube Support
05	Sear	22	Firing Pin Ret. Pin-Rear	39	Inner Mag. Tube Spring	59	Locking Bolt Spring
06	Rocker	23	Lever	40	Mag. Tube Knob	60	Mainspring Yoke Pin
07	Trigger Lock	24	Lever Plunger	41	Mag. Tube Knob Pin	61	Front Sight
08	Sear/Rocker Spring	25	Lever Plunger Spring	42	Forearm Cap	61-1	Front Sight Bead
09	Trigger Lock Spring	26	Lever Plunger Pin	43	Support Forearm Cap	62	Rear Sight
10	Sear/Trigger Spring	27	Carrier	44	Outer MagTube Set Screw	62-1	Rear Sight Set Screw
11	Lever Detent/Trigger Lock Pin	28	Carrier Dog	45	Hammer Screw	62-2	Rear Sight Insert
12	Lever Screw	29	Carrier Dog Pin	46	Carrier Screw	62-3	Rear Sight Screw
13	Transfer Bar	30	Screw Loading Gate	47	Trig. Guard Plate Screw	62A	Rear Sight Elevator
14	Transfer Bar Pin	31	Ejector	49	Tang Screw	64	Inner Receiver
15	Trigger/Rocker Link	32	Ejector Spring	50	Mainspring	65	Dummy Screw
16	Bolt	33	Mainspring Yoke Assy	51	Mainspring Seat	65-0	O-Ring
17	Firing Pin-Front	34	Inner Mag. Tube	53	Buttplate	66	Forearm Cap Screw
		35	Locking Bolt	54	Buttstock		

⚠ WARNING: This product can expose you to chemicals including lead, which is known to the State of California to cause cancer and birth defects or other reproductive harm. For more information go to www.P65Warnings.ca.gov/product.

ILLUSTRATION OF PARTS FOR H010G MODELS



LIST OF PARTS FOR H010G MODELS

01 Receiver	19 Extractor	38 Follower	55 Forearm
02 Trigger Guard Plate	20 Firing Pin Spring	38S Carrier Dog Spring	56 Loading Gate
03 Hammer	21 Firing Pin Ret. Pin-Front	39 Inner Mag. Tube Spring	56S Outer MagTube Support
04 Trigger	22 Firing Pin Ret. Pin-Rear	40 Mag. Tube Knob	59 Locking Bolt Spring
05 Sear	23 Lever	41 Mag. Tube Knob Pin	60 Mainspring Yoke Pin
06 Rocker	24 Lever Plunger	42 Forearm Cap	61 Front Sight
07 Trigger Lock	25 Lever Plunger Spring	43 Support Forearm Cap	61-1 Front Sight Bead
08 Sear/Rocker Spring	26 Lever Plunger Pin	44 Outer MagTube Set Screw	62 Rear Sight
09 Trigger Lock Spring	27 Carrier	45 Hammer Screw	62-1 Rear Sight Set Screw
10 Sear/Trigger Pin	28 Carrier Dog	46 Carrier Screw	62-2 Rear Sight Insert
11 Lever Detent/Trigger Lock Pin	29 Carrier Dog Pin	47 Trig. Guard Plate Screw	62-3 Rear Sight Screw
12 Lever Screw	30 Screw Loading Gate	48 Trig. Guard Plate Support Screw	62A Rear Sight Elevator
13 Transfer Bar	31 Ejector	49 Tang Screw	64 Inner Receiver
14 Transfer Bar Pin	32 Ejector Spring	50 Mainspring	65 Dummy Screw
15 Trigger/Rocker Link	33 Mainspring Yoke Assy	51 Mainspring Seat	65-0 O-Ring
16 Bolt	34 Inner Mag. Tube	53 Buttplate	66 Forearm Cap Screw
17 Firing Pin-Front	35 Locking Bolt	54 Buttstock	
18 Firing Pin-Rear	36 Barrel	54-1 Swivel Screw	
	37 Outer Mag. Tube		

GUN PARTS

An illustration and list of part names are included in this manual. Please note that not all parts are available for sale. Those parts which are available should be installed by a licensed gunsmith. When ordering parts, please give part name and part number.

Important: If you make unauthorized adjustments or use unauthorized parts, Henry Repeating Arms Company will not assume responsibility for the proper functioning of the firearm.

THIS GUN IS MANUFACTURED TO PERFORM PROPERLY WITH THE ORIGINAL PARTS AS DESIGNED. IT IS YOUR DUTY TO MAKE SURE ANY PARTS YOU BUY ARE INSTALLED CORRECTLY AND THAT NEITHER REPLACEMENTS NOR ORIGINALS ARE ALTERED OR CHANGED. THIS IS WHY WE SAY TAKE IT TO A LICENSED GUNSMITH STATION. YOUR GUN IS A COMPLEX TOOL WITH MANY PARTS THAT MUST RELATE CORRECTLY TO OTHER PARTS. PUTTING A GUN TOGETHER WRONG OR WITH MODIFIED PARTS CAN RESULT IN A DAMAGED GUN, DANGER, AND INJURY OR DEATH TO YOU AND OTHERS THROUGH MALFUNCTION. ALWAYS LET A QUALIFIED GUNSMITH WORK ON YOUR GUN AND CHECK ANY WORK YOU THINK WAS NOT PERFORMED BY A GUNSMITH.

SERVICING AND REPAIR

If you believe that your Henry firearm requires repair or adjustment, we suggest that you first contact our Customer Service by visiting the “Contact Us” page on our website, or by phone at 201.858.4400. It may be a problem that we can resolve by phone or by sending a replacement part. For international customers please visit the “Contact Us” page on our website for instructions.

In the unlikely event that your firearm requires adjustments or repair, please make certain that it is unloaded and send it to us at the following address:

HRAC

Att: Repair Dept.

107 W. Coleman Street
Rice Lake, WI 54868

Enclose an explanation of the problem in as much detail as possible.

Make certain to include your complete name, address, phone number and serial number. Make sure your firearm is packaged to prevent it from being damaged. The package should be insured to protect against LOSS OR THEFT.

DO NOT INCLUDE "HENRY REPEATING ARMS" IN THE ADDRESS ON THE PACKAGE, IN ORDER TO PREVENT AN INQUISITIVE THIEF FROM BEING ATTRACTED TO IT BY SUCH INFORMATION.

YOU CAN USE THE ORIGINAL BOX FOR RETURN, HOWEVER, YOU SHOULD MAKE SURE IT IS WRAPPED IN A BROWN OR OTHER COLORED PAPER AS TO NOT INDICATE THAT THE BOX CONTAINS A FIREARM. THIS HELPS TO MAINTAIN THE CONFIDENTIALITY OF YOUR RIFLE TO ENSURE IT GETS BACK TO US SAFELY.

NEW PRODUCTS FROM HENRY

Henry Repeating Arms Company will endeavor to introduce and manufacture other fine firearms, all made in America, of high quality and at affordable prices.

Telephone: **201-858-4400** • Fax: **201-858-4435** • Website: **www.henryusa.com**

SOCIALIZE WITH HENRY AND HENRY OWNERS

Keep up to date with new inventions and products from Henry as well as meet other Henry owners around the country by joining the conversation and liking our social media accounts:

 www.facebook.com/henryrepeating

 @Henry_Rifles

 @HenryRifles

 www.youtube.com/c/HenryriflesUSA

Be the first to know about new products and events by subscribing to our e-mail list: www.henryusa.com/maillinglist

HENRY CUSTOMER PHOTOS

You may already be famous, but if not, we invite you to send a photo with your Henry for a possible website appearance to: info@henryusa.com

HENRY ACCESSORIES

Made in America, just like our rifles! Find apparel, slings, scope mounts, gun cases, display cases and more at www.henrypride.com

History and Thank You



Benjamin Tyler Henry.
His invention: The Henry Rifle.

Thank you for purchasing your new Henry Firearm. We are proud to have crafted this firearm for you in the great tradition of the Henry Repeating Rifle which dates back to 1860 when the first effective, lever-action repeating rifle was developed by Benjamin Tyler Henry. The lever action is America's unique contribution to international firearms design; We go to great lengths to provide the highest quality of design and craftsmanship for each and every one of our American-Made firearms. You are now a part of the Henry family, and we are thankful to have your support. Your new Shotgun should provide you and your family with many years of safe enjoyment and pride of ownership.

It is imperative that these cautions and operating instructions be thoroughly studied and understood before using your new firearm, in order to ensure proper and safe gun handling. Failure to follow these cautions, warnings and operating instructions could result in damage to your gun or to other property or could result in injury or death to yourself or to others.